



# Experiences of Friendship in cluster village(Plinth Raise) in selective flood prone areas of Bangladesh

Presented By:

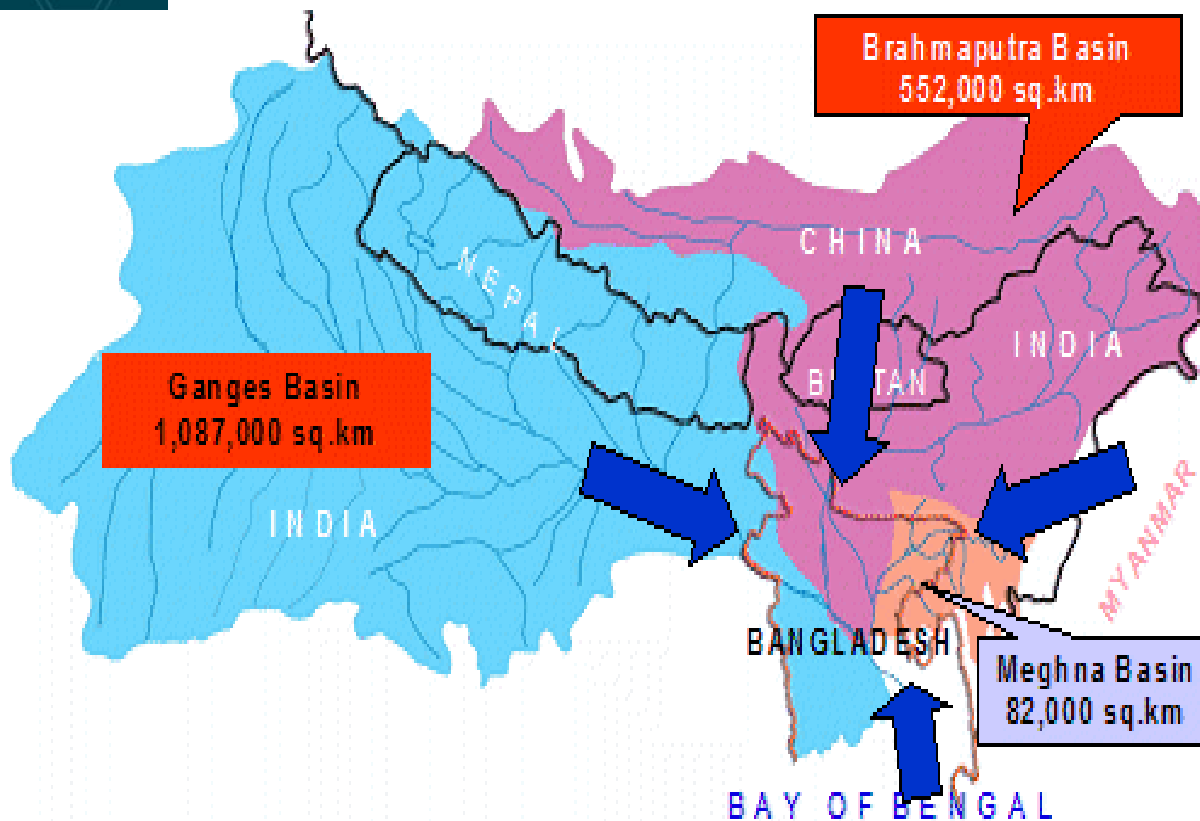
K. M. Khaleduzzaman

Programme Manager,

Climate Change Adaptation and Disaster Management,

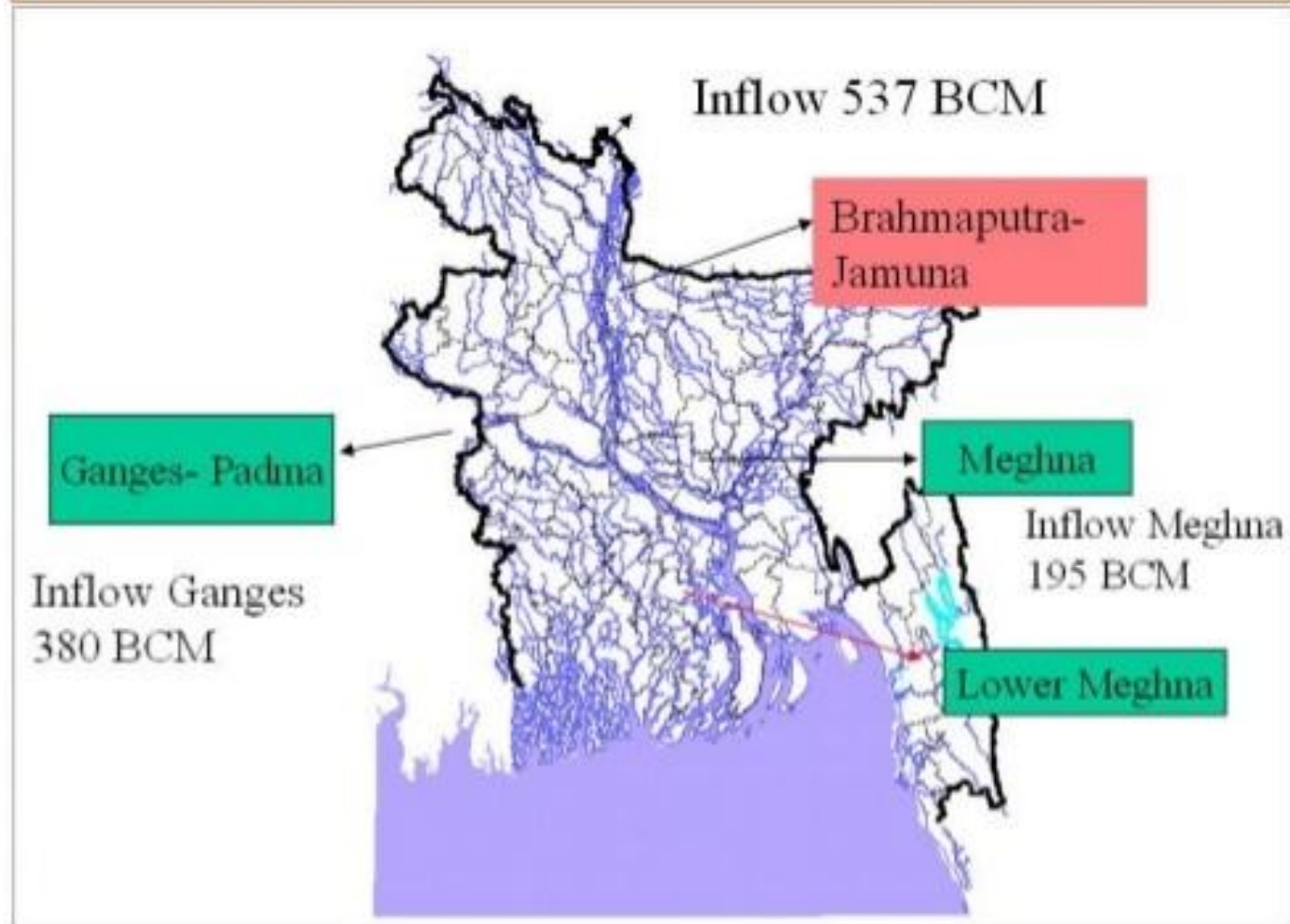
Friendship

# Flood and Bangladesh



Most of its territory is at heights from 0 to 90m a.s.l and 7% of the country is occupied by water bodies—principally by the rivers Brahmaputra, Padma, (the Ganges) Meghna and their tributaries (Aquastat, 2011). Flooding is a normal part of Bangladesh ecology but extreme events (such as the ones of 1998 or 2007) can severely affect the national agriculture production, threatening the food security of tens millions of households (Del Ninno, 2013),

## RIVER SYSTEMS OF BANGLADESH





## ***Some Causes of Flooding in Bangladesh***

### **1. Monsoon Climate**

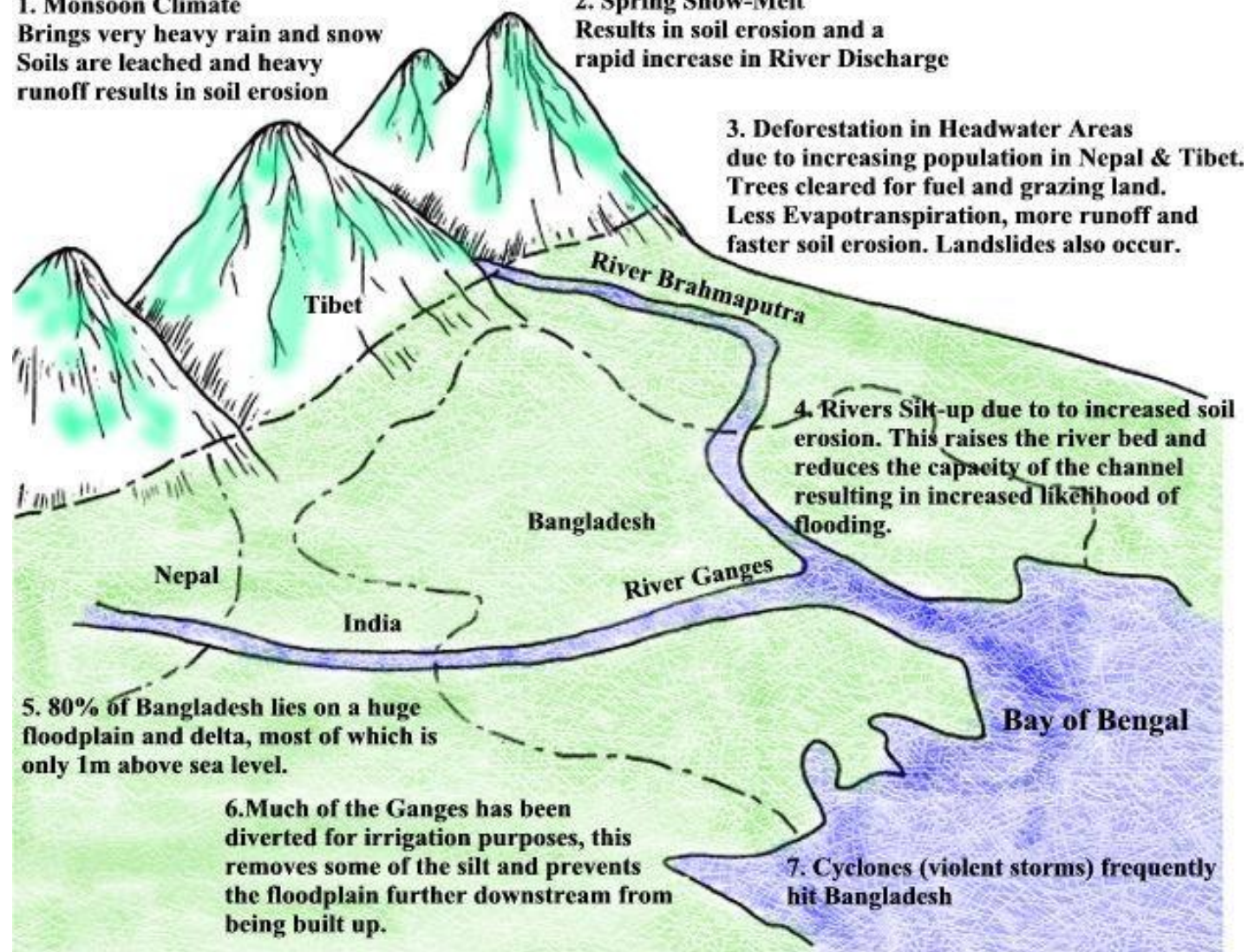
Brings very heavy rain and snow  
Soils are leached and heavy runoff results in soil erosion

### **2. Spring Snow-Melt**

Results in soil erosion and a rapid increase in River Discharge

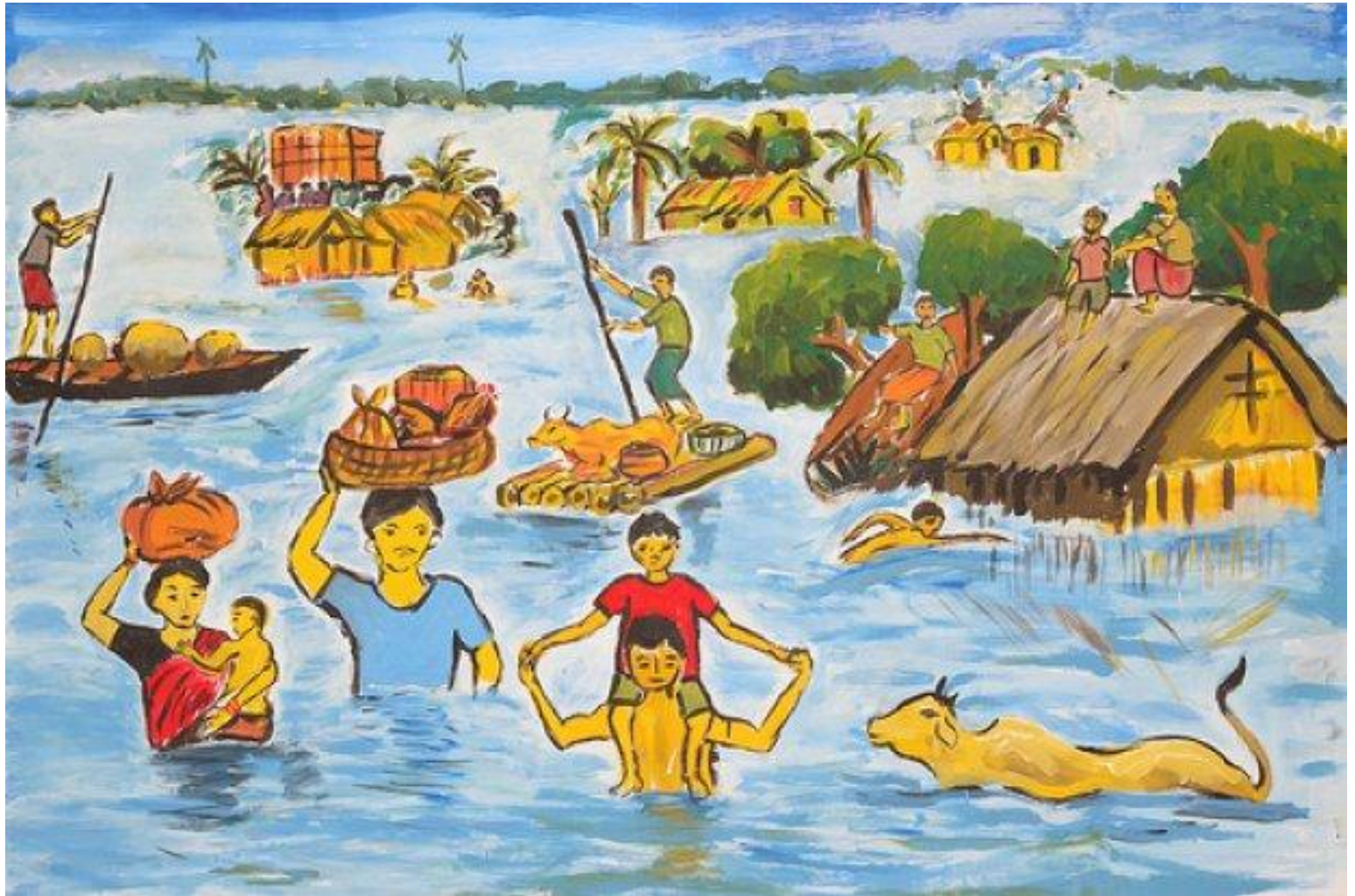
### **3. Deforestation in Headwater Areas**

due to increasing population in Nepal & Tibet.  
Trees cleared for fuel and grazing land.  
Less Evapotranspiration, more runoff and faster soil erosion. Landslides also occur.





# Sufferings







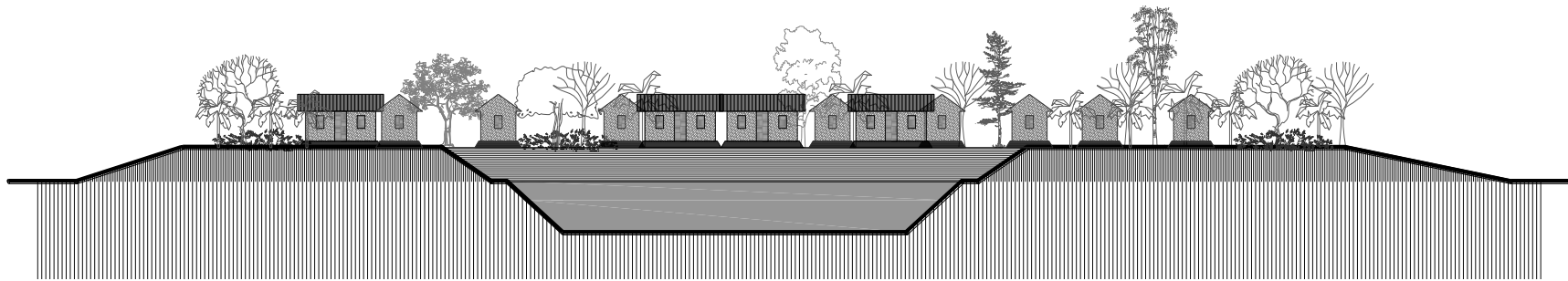




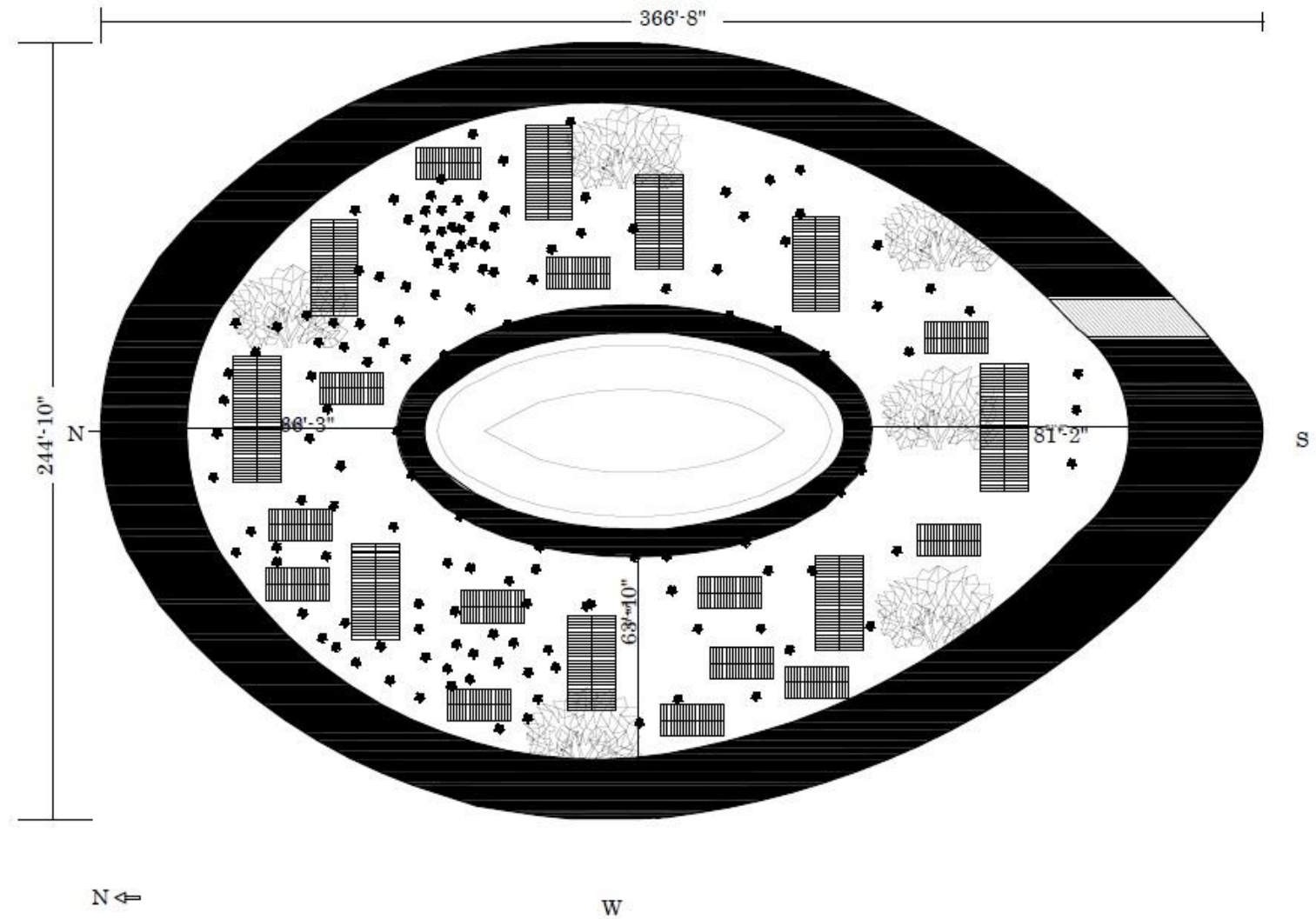
## **Cluster Village on Raised Plinth- A Friendship Initiative**



# Cross section:



# Design(Top view):

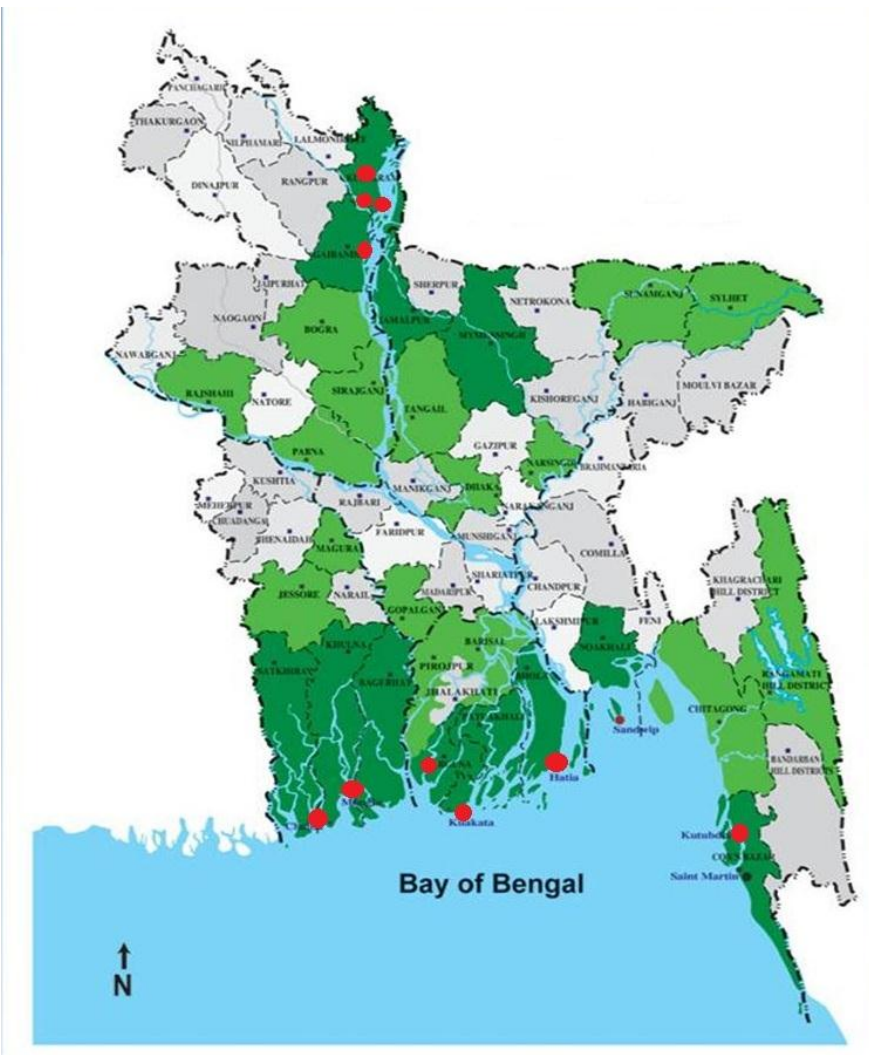




# Cluster Village on Raised Plinth- A Friendship Initiative



# Location of Friendship Cluster Villages (Plinth Raise)



Zone	District	Upazila
North Zone	Gaibandha	Gaibandha Sadar
		Kurigram Sadar
	Kurigram	Chilmari
		Rowmari
		Rajibpur



## Short Brief:

### Capacity:

- ⦿ 18-30 lives in Normal time
- ⦿ 70-100 Household can stay at flood time

### Facilities:

- ⦿ One school structure
- ⦿ One community center (house)
- ⦿ 5-7 Tube wells
- ⦿ 5-7 shared sanitary latrines
- ⦿ Solar street light

# **Cluster village(Raised Plinth): A collective effort of community and NGO**

- A. Land arrangement
- B. Construction
- C. House assets Shifting
- D. Materials
- E. Functioning and maintenance



# Cluster village(Raised Plinth) : A collective effort of community and NGO



## 1. Land Arrangement



# Cluster village(Raised Plinth) : A collective effort of community and NGO



## 1. Land Arrangement





# Cluster village(Raised Plinth) : A collective effort of community and NGO



## 2. Construction





# Cluster village(Raised Plinth): A collective effort of community and NGO



## 2. Construction





# Cluster village(Raised Plinth) : A collective effort of community and NGO



## 2. Construction



# Cluster village : A collective effort of community and NGO



## 2. Construction





# Cluster village : A collective effort of community and NGO



## 2. Construction



# Cluster village(Raised Plinth) : A collective effort of community and NGO



## 2. Construction



# Cluster village(Raised Plinth) : A collective effort of community and NGO



## 2. Construction





# Cluster village(Raised Plinth) : A collective effort of community and NGO



## 2. Construction



# Cluster village(Raised Plinth) : A collective effort of community and NGO



## 2. Construction



# Cluster village(Raised Plinth) : A collective effort of community and NGO



## 2. Construction





# Cluster village(Raised Plinth) : A collective effort of community and NGO



## 3. House and assets Shifting



# Cluster village(Raised Plinth) : A collective effort of community and NGO



## 4. Materials of houses





# Cluster village(Raised Plinth) : A collective effort of community and NGO



## 5. Functioning and Maintenance



# Cluster village(Raised Plinth) Facilities:

## WASH, School structure and Community center





# Cluster village(Raised Plinth) : A safe solution for life and livelihood

## -- Small Pond





# Cluster village(Raised Plinth) : A safe solution for life and livelihood

## -- Homestead Gardening





# Cluster village(Raised Plinth) : A safe solution for life and livelihood

-- Livestock





# Shelter support in 2019 flood at Friendship Cluster villages (Plinth Raise) :

- 6,825 people
- 2,120 cattle
- 3 ton paddy/rice/jute







# Thank you

[www.friendship.ngo](http://www.friendship.ngo)

[info@friendship.ngo](mailto:info@friendship.ngo)