

# National Shelter Cluster Meeting

Kathmandu  
24 June 11am



# Agenda

1. Welcome
2. Government updates
3. Information Management Update
4. Technical Updates
5. Gender and Diversity
6. District Mapping, Cash Mapping
7. Preparedness planning
8. WASH Cluster
9. AOB



# Government Updates



# Government Updates

- Relief Phase ended on June 22, 2015
- Recovery phase commenced
- Custom duty no longer applicable, all items to import will follow regular custom duty procedures
- Custom duty exempted if cargo transited through the central government warehouse
- Government testing CGI imported to the country



# Government Updates

- Government working on directives for agencies not registered in the country
- Requesting agencies to focus in flood preparedness



# Information Management



# Information Management Update

- 4W reporting down to once a week
  - Submissions due each Thursday
- Dropbox well received and well used
- Inspecting the data to assess gaps to identify meaningful information
- New maps and products
- After Thursday use  
[im2.nepal@sheltercluster.org](mailto:im2.nepal@sheltercluster.org) or  
[im4.nepal@sheltercluster.org](mailto:im4.nepal@sheltercluster.org)



# Technical update

- Technical working group/NSET
- SC Recovery document
- PDNA – executive summary
- Recovery working group
- TWG – building materials / follow up of current shelter provision/ IEC and BoQ
- IEC Leaflet





# IEC material

**सुरक्षित स्थानमा बासस्थान बनाउं**

डाढो छाप्रो कहाँ बसाउने ?

मल्केको चोरिजन पुर्व स्थानमा छाडो बसाउने

खाडी आउने सपट बसाउने

छाडी मिट पाकामा बसाउने

पडिदो कास हावने मिटमा बसाउने

खुलाप ह सुरक्षित स्थानमा बसाउने

**Shelter Cluster Nepal**  
Coordinating Humanitarian Shelter

**CGI जस्तापाता प्रयोग तथा सुरक्षा उपाय**  
Fixing and Safety

जस्तापातालाई बिना ब्रुस, टावर इस्तात सगरो बन्नुको प्रयोग गर्दा सावधानी अपनाओ

आवकबाटा अनुसार आकार तथा भेन्टिलेसन गर्नु चाहेमा विचार गर्नु

जस्तापातालाई किनारो तारको प्रयोग गरेर बाँधेर राख्नु पर्नेछ

थ्रस्ट वेल्डिंग used to connect CGI and bamboo

Be careful if you put stones or bricks on your roof

सुरक्षाको लागि पन्जाको प्रयोग गर्नु

Use gloves for your own safety

बाँसको ब्रुस (गुटर) बनाएर छाताको पानी तर्काउने

Bamboo can be used for making a rain gutter

रबर वासको प्रयोग गर्नु

Use rubber washers

छाता भाँडालाई बढचाउने पन्जामे पाता तथा फर्नामे किनासको प्रयोग गर्नु

Use metal strap or angle rails to connect purlin and rafter

वावर भाँडालाई छाताको प्रत्येक दोस्रो ब्रुस पछि राख्नु

Nails and washers at every second corrugation

तार तथा डोरीको प्रयोग गरेर बाँधेर बाँधेर बसाउने बाँध्नु

Strapping can be replaced with steel wire

विनारो तारको प्रयोग गरेर बाँधेर राख्नु पर्नेछ

Use wire to connect bamboo pieces

गाडोको प्रबुद्धि भरुवा घरको जस्तापाता मजबुत बनाओ

Foundations must be done carefully

यो षोभामा जस्तापातालाई बसानी प्रयोग गर्नु भनेर पढ्नुदा सामान्य जानकारी मात्र छ, कुनै कुनै विपदाको बासाछो र विपदापछि प्रयोग गर्नु भनेर विपदा सम्बन्धित घरानीमा धार राख्नु

This fact sheet provides general information only and recipients should seek their own independent advice on suitable building materials and methods.

**पडिवाटके लागि आपतकालीन भण्डारण भरेला**

पडिवाटके आउने बसानी सामान तय गर्नु

आवकबाटा अनुसार आकार तथा भेन्टिलेसन गर्नु चाहेमा विचार गर्नु

जस्तापातालाई बिना ब्रुस, टावर इस्तात सगरो बन्नुको प्रयोग गर्दा सावधानी अपनाओ

थ्रस्ट वेल्डिंग used to connect CGI and bamboo

Be careful if you put stones or bricks on your roof

सुरक्षाको लागि पन्जाको प्रयोग गर्नु

Use gloves for your own safety

बाँसको ब्रुस (गुटर) बनाएर छाताको पानी तर्काउने

Bamboo can be used for making a rain gutter

रबर वासको प्रयोग गर्नु

Use rubber washers

छाता भाँडालाई बढचाउने पन्जामे पाता तथा फर्नामे किनासको प्रयोग गर्नु

Use metal strap or angle rails to connect purlin and rafter

वावर भाँडालाई छाताको प्रत्येक दोस्रो ब्रुस पछि राख्नु

Nails and washers at every second corrugation

तार तथा डोरीको प्रयोग गरेर बाँधेर बाँधेर बसाउने बाँध्नु

Strapping can be replaced with steel wire

विनारो तारको प्रयोग गरेर बाँधेर राख्नु पर्नेछ

Use wire to connect bamboo pieces

गाडोको प्रबुद्धि भरुवा घरको जस्तापाता मजबुत बनाओ

Foundations must be done carefully

यो षोभामा जस्तापातालाई बसानी प्रयोग गर्नु भनेर पढ्नुदा सामान्य जानकारी मात्र छ, कुनै कुनै विपदाको बासाछो र विपदापछि प्रयोग गर्नु भनेर विपदा सम्बन्धित घरानीमा धार राख्नु

This fact sheet provides general information only and recipients should seek their own independent advice on suitable building materials and methods.

**Shelter Cluster Nepal**  
Coordinating Humanitarian Shelter

## Gender & Diversity

# New/Key Resources on the Shelter Cluster Website

[www.sheltercluster.org/response/nepal-earthquake-2015](http://www.sheltercluster.org/response/nepal-earthquake-2015) See 'cross cutting issues' section

**Prioritisation Tool:** Recommendations for Shelter Cluster Partners on Beneficiary Targeting and Prioritisation (V1, June 2015)

**Community Engagement and Accountability (V1)** – Toolkit - Principles that underpin community engagement and accountability

**All Under One Roof:** Disability-inclusive shelter and settlements in emergencies (International Federation of Red Cross in partnership with Handicap International and CBM, 2015)

Brief: **Nepal Gender and Protection** (CARE, 2015)

**Shelter Cluster:** Guidance on mainstreaming gender and diversity in shelter programmes (2013)

Next (coming soon .... **Community Engagement and Accountability**

## Targeting and Prioritisation

### Score-card to assist household prioritisation (for a targeted approach to temporary shelter and self recovery)

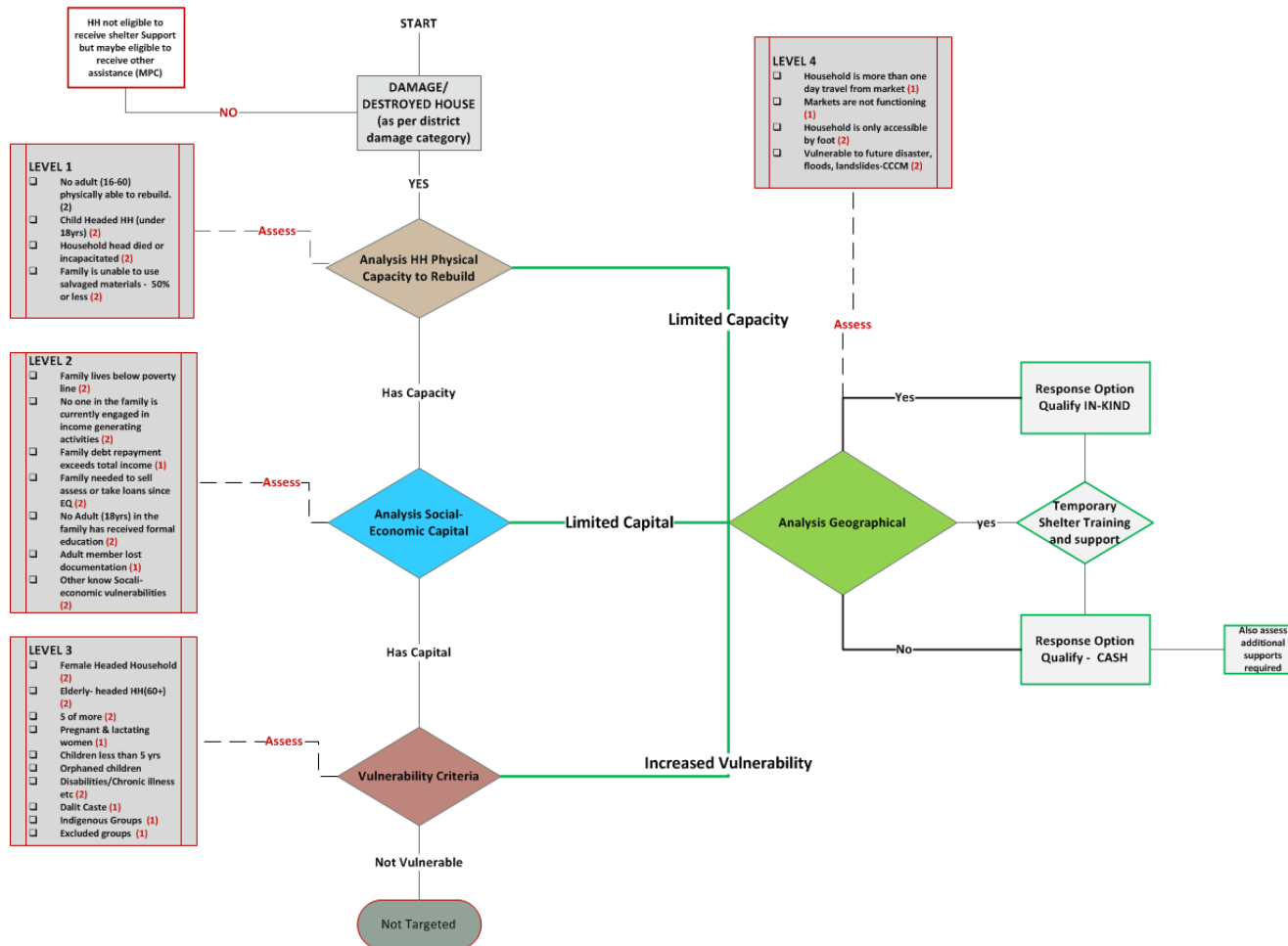
Part 1. Checklist for relief items and shelter materials (must meet all criteria):		Yes/No
1. House is totally damaged or unsafe for habitation and family is presently displaced		
2. House is partially damaged or unsafe or has not been assessment as safe		
3. At least one family member is a permanent resident of the VDC or has been living there for less than four years		
Part 2. Vulnerability criteria for priority assistance: <sup>1</sup>		
A. Family composition and social characteristics	Points	Score
1. Female-headed household	2	
2. Elderly-headed household (60+)	2	
3. The family is made up of more than 5 members	2	
4. There are children in the family less than 5 years of age	1	
5. Caring for separated, unaccompanied or orphaned children.	1	
6. Family with pregnant and lactating women	1	
7. Family member(s) have a disabilities, chronic illness or special needs (physical, mental, sensory, behavioural, cognitive or emotional impairment or limiting conditions)	2	
8. Member of Dalit caste	1	
9. Member of Janjati indigenous group or ethnic minority	1	
10. Member of other traditionally excluded group including religious minority, widow, LGBT community, bonded labourer)	1	
<b>Total this section:</b>		<b>14</b>
B. Social and Economic Characteristics		
1. Family lives below the poverty line (below NPR 40,000 annual income)	2	
2. No one in the family is currently engaged in income generating activities	2	
3. Family debt repayment exceeds total income (including remittances) in the last year	1	
4. Family has needed to sell assets or take loan(s) since the earthquakes	2	
5. No adult (18 yrs. +) in the family has received formal education	2	
6. Adult family members have lost key documentation (citizenship, marriage, birth certificates, land or property deeds/agreements)	1	
7. Other known vulnerabilities (undocumented, refugees, trafficked person)	2	
<b>Total this section:</b>		<b>12</b>
<b>Subtotal:</b>		
C. Family Capacity to Rebuild		
Physical		
1. Family with no adult (16-60) physically able to rebuild	2	
2. Child-headed household (head of household is below 18 yrs. old)	2	
3. Household head died or is incapacitated as a result of the disaster	2	
4. Family is unable to salvage/reuse 50% available materials	2	
Geographical		
5. Household is more than 1 day travel from nearest market	1	
6. Household is only accessible by foot (more than 2km from nearest road)	1	
7. Household is particularly vulnerable to further disaster (landslide, floods)	2	
8. Market is not functioning	2	
<b>Total this section:</b>		<b>14</b>
<b>Total:</b>		<b>40</b>

<sup>1</sup> Note: distinctions across categories are not always clear cut; it is acknowledged that characteristics in Part A all have socio-economic impacts; and together Parts A and B have implications for capacity to rebuild. Every effort has been made here for 'best fit' and to avoid duplication (and hence double counting) across categories.



## Targeting and Prioritisation

Shelter Beneficiary Targeting Decision Tree



# WASH CLUSTER UPDATE



# District Mapping, Cash Mapping



# Inter-cluster district preparedness planning

- Existing Response Summary by Cluster, Shelter, WASH, CCCM
- Early Recovery, Health, Food
- District level **Hazards and Risk Analysis Mapping** - priority VDCs (Government)
- Scenarios – General, EQ, Landslides, Floods, Disease outbreak / Public Health Emergencies
- Coordination & response readiness activities – OCHA- Cross-Cluster Joint Activity Planning



# Inter-cluster district preparedness planning

Specific objectives are:

- Contributing to effective risk and hazard identification at district levels
- Encouraging pre-positioning of emergency stock
- Supporting response planning and coordination at district and VDC level
- Activity Matrix, Who, When, How and Progress

SC Partners with additional or planned preparedness stock preposition materials in agreed warehousing at xxx sites for xxx HH to allow first phase response.

- Tarpaulins, tents, plastic sheets, shelter tool kits.
- Winter NFI - blankets, winter clothing, stoves, insulation materials and fuel-
- Necessary IEC materials to be prepositioned at VDC health centres.





# Any Other Business

Next meeting Wednesday 24 June 2015, 11am

Friendly reminders:

- ✓ Check for updates on the website
- ✓ Send in your reports for SC tracking
- ✓ Register yourself on the mailing list

New Shelter Cluster Email for general correspondence:  
[nepal@sheltercluster.org](mailto:nepal@sheltercluster.org)

<https://www.sheltercluster.org/response/nepal-earthquake-2015>

