



Nepal – 2015 Earthquake response

WASH cluster

Lead DWSS

Co Lead UNICEF

Coordination structures and support

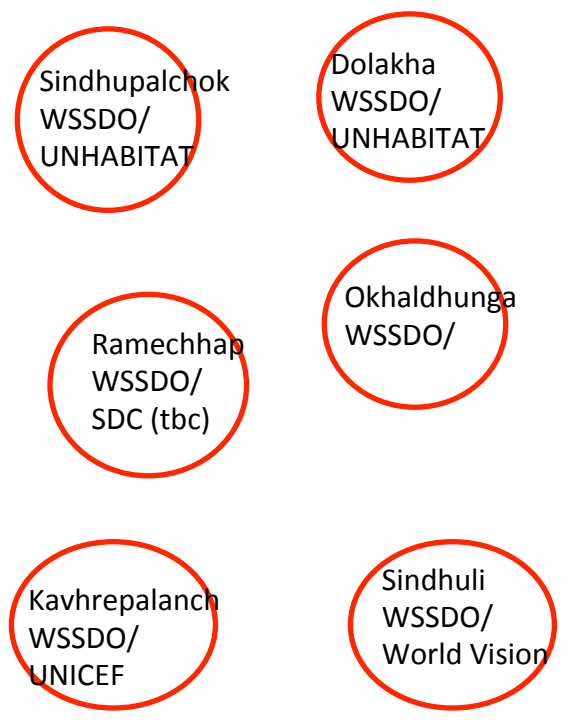
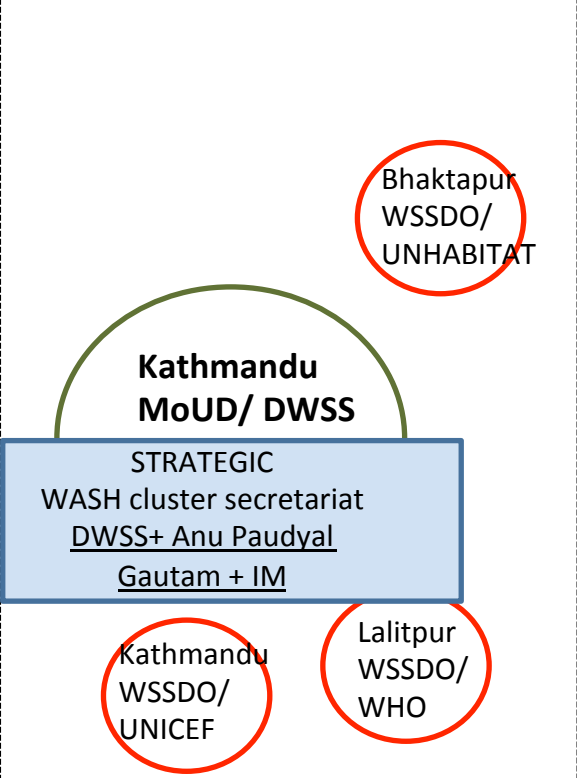
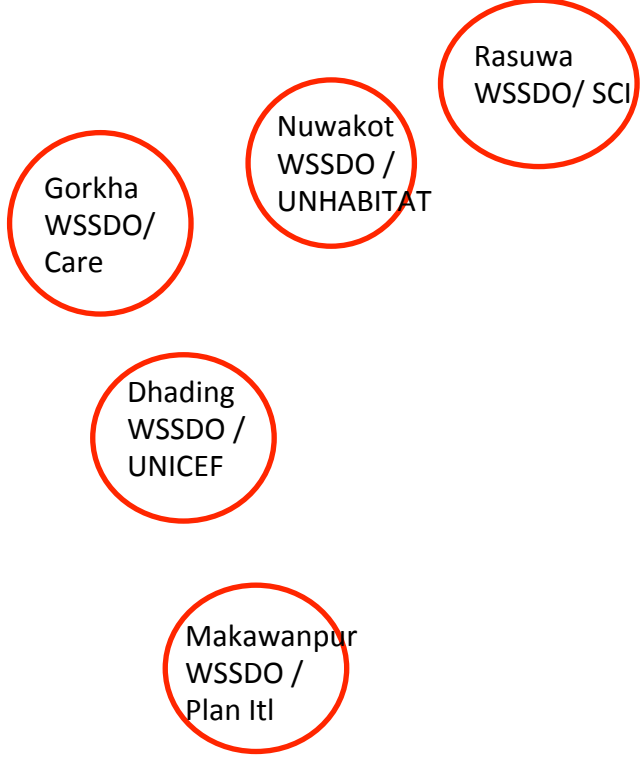


Nepal – 2015 Earthquake response



Western region ←

Central region →



OPERATIONAL
 5 districts supported by sub national WASH cluster coord.
CC+IM based in West (Gorkha)

OPERATIONAL
 3 districts supported by WASH cluster coord from WASH cluster secretariat

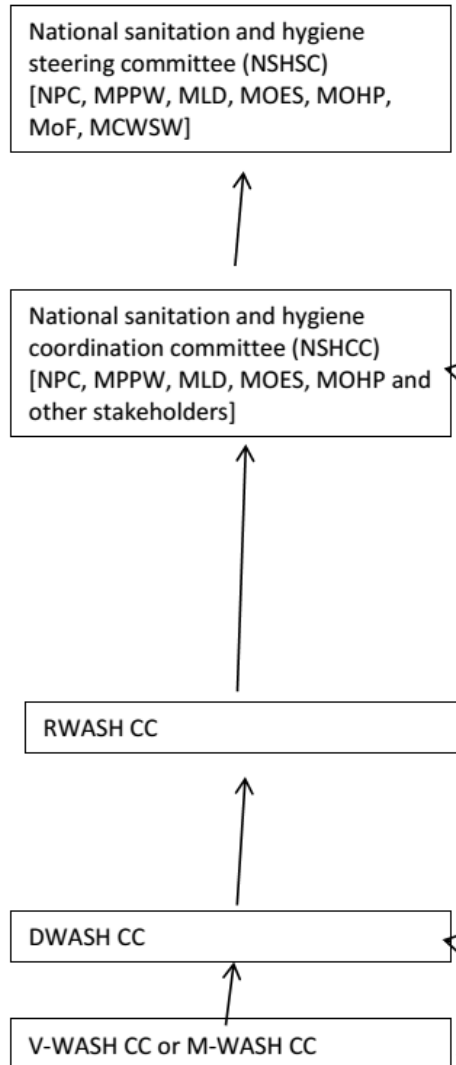
OPERATIONAL
 6 districts supported by sub national WASH cluster coord.
CC + IM based in East (Chautara)

Overall WASH coordination

WASH Cluster coordination

Considering linkages with underlying development structures

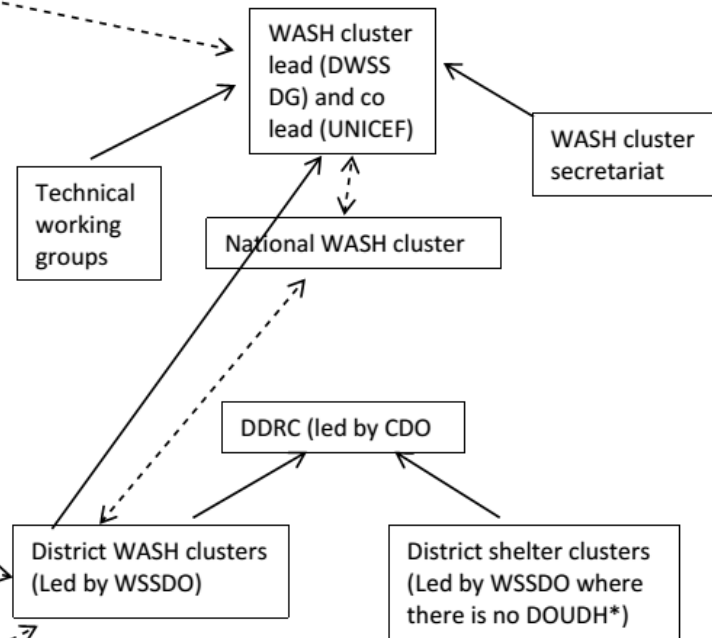
WASH SECTOR DEVELOPMENT STRUCTURE¹



WASH CLUSTER HUMANITARIAN STRUCTURE

Notes

Solid reporting lines show accountability for Govt
Dotted lines for non Govt partners
NSHCC will be expanded to act as de facto SAG
DWASH CC to provide overall policy guidance
District cluster coordination to link with D/M/VWASH CC



*District Officer Urban Development and Housing DOUDH

Programme and targets

Flash appeal

Cluster objective 1; to ensure safe and equitable access to a sufficient quantity of water of appropriate quality for drinking, cooking and personal hygiene for spontaneous settlements for IDPs, in communities and in temporary health, child friendly spaces and learning centres (through service provision, or cash or their own efforts).

Cluster objective 2; to ensure healthy environmental sanitation conditions are maintained in spontaneous settlements for IDPs, in communities and in temporary health and child/learning spaces (through service provision, or cash or their own efforts).

Cluster objective 3: to ensure that the affected population has access to and is involved in identifying and promoting the use of hygiene items to ensure personal hygiene, health, dignity and well-being through hygiene promotion, hygiene kits/cash and community dialogue & mobilisation.

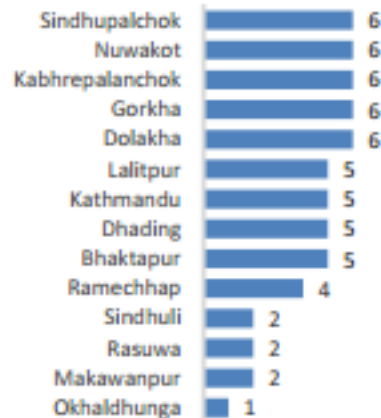
NEPAL: EARTHQUAKE WASH CLUSTER ACTIVITY (as of 02 Jun 2015)



As of 02 June 2015, 6 activities have been reported for Water, Sanitation and Hygiene cluster within the 14 priority districts

- 1.1** million people in need of water services
- 1** million people in need of sanitation services
- 3** million people in need of hygiene services
- 5.2** people targeted
- \$63** million required
- 27%** fundind received

Number of activities by district



1- Kathmandu ; 2 - Bhaktapur ; 3 - Lalitpur

ACTIVITIES AND BENEFICIARIES

WASH affected by districts

As of 24th May

| District | WATER | | SANITATION | | HYGIENE |
|--|---------------------------------------|--|---|---|--|
| | % no access to protected source water | #s no access to protected source water | % heavy damage/ destroyed re sanitation | #s - toilet affected, numbers without toilets | Hygiene Needs HH (half partially + full totally damaged) |
| Bhaktapur | 18% | 54051 | 11% | 34396 | 23445 |
| Dhading | 18% | 60492 | 28% | 94099 | 53101 |
| Dolakha | 32% | 59698 | 23% | 42162 | 50440 |
| Gorkha | 30% | 81318 | 40% | 108424 | 51365 |
| Kabhre | 12% | 45832 | 10% | 38194 | 61790 |
| Kathmandu | 15% | 258024 | 13% | 227061 | 62350 |
| Lalitpur | 12% | 54434 | 11% | 50805 | 19270 |
| Makawanpur | 7% | 29433 | 12% | 50457 | 23533 |
| Nuwakot | 70% | 194230 | 30% | 83241 | 60043 |
| Okhaldhunga | 30% | 44395 | 40% | 59194 | 11585 |
| Ramechhap | 20% | 40529 | 20% | 40529 | 33330 |
| Rasuwa | 30% | 12990 | 40% | 17320 | 8245 |
| Sindhuli | 20% | 59238 | 30% | 88858 | 23211 |
| Sindhupalchok | 50% | 143899 | 40% | 115119 | 65261 |
| Caseload Numbers of people affected | | 1138565 | | 1049859 | 3008316 |

Caseload revision

- VDC Focal Point Agency to submit their agency level assessment to WSSDO at District Level to request a revision of caseloads with an explanation for the reason for the proposed change in.
- DE/DFP to check and verify as required. DE/DFP to submit proposed revised caseload to National WASH cluster secretariat.
- DWSS/National WASH cluster secretariat to check and verify as required.
- DWSS/National WASH cluster secretariat to amend national level planning figures based upon revisions agreed.
- DE/DFP and DWSS/National WASH cluster secretariat to maintain spreadsheets with historical records of caseloads in order to track changes.

Rapid Repair of Toilet sub/Super-Structures: i.e. household-level responsibility

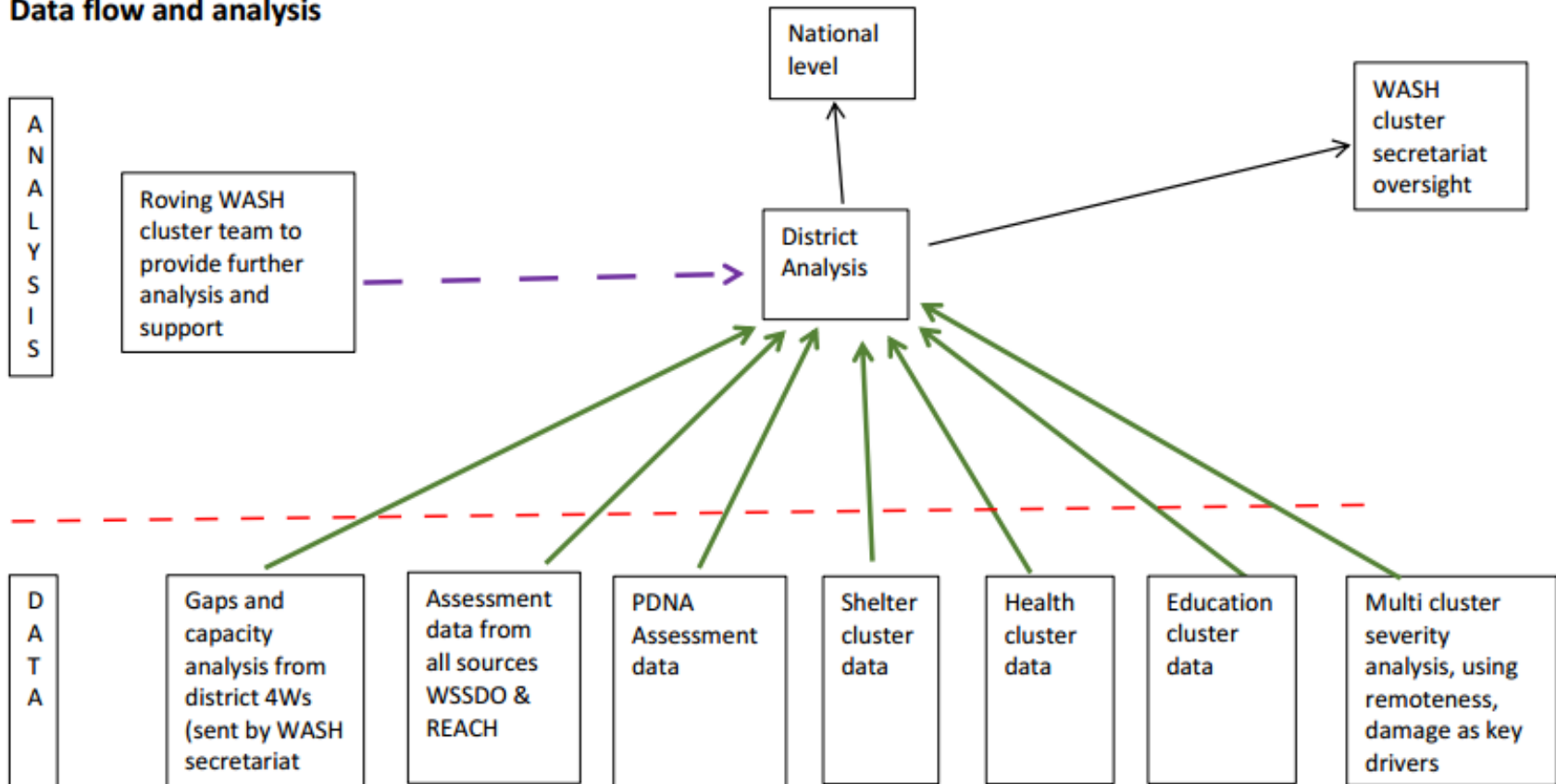
- Households who had a toilet before the earthquake and who have lost superstructure - material envelope of total assistance of \$15-25.
- Households who had a toilet before the earthquake and who have lost superstructure, pan and pit - material envelope of total assistance of \$35-50.
- Households that did not have a toilet before the earthquake - material envelope of total assistance of \$25-35 to build a toilet.
- In some cases, local bodies/agencies in consultation and consensus with D/M/V-WASHCC can decide cash provision as appropriate and relevant.
- The Government of Nepal (GoN) proposes to provide house rebuilding support of NRs. 200,000 for totally damaged households. This guideline strongly recommends that a toilet is considered to be included as part of the allocation.

Analysis

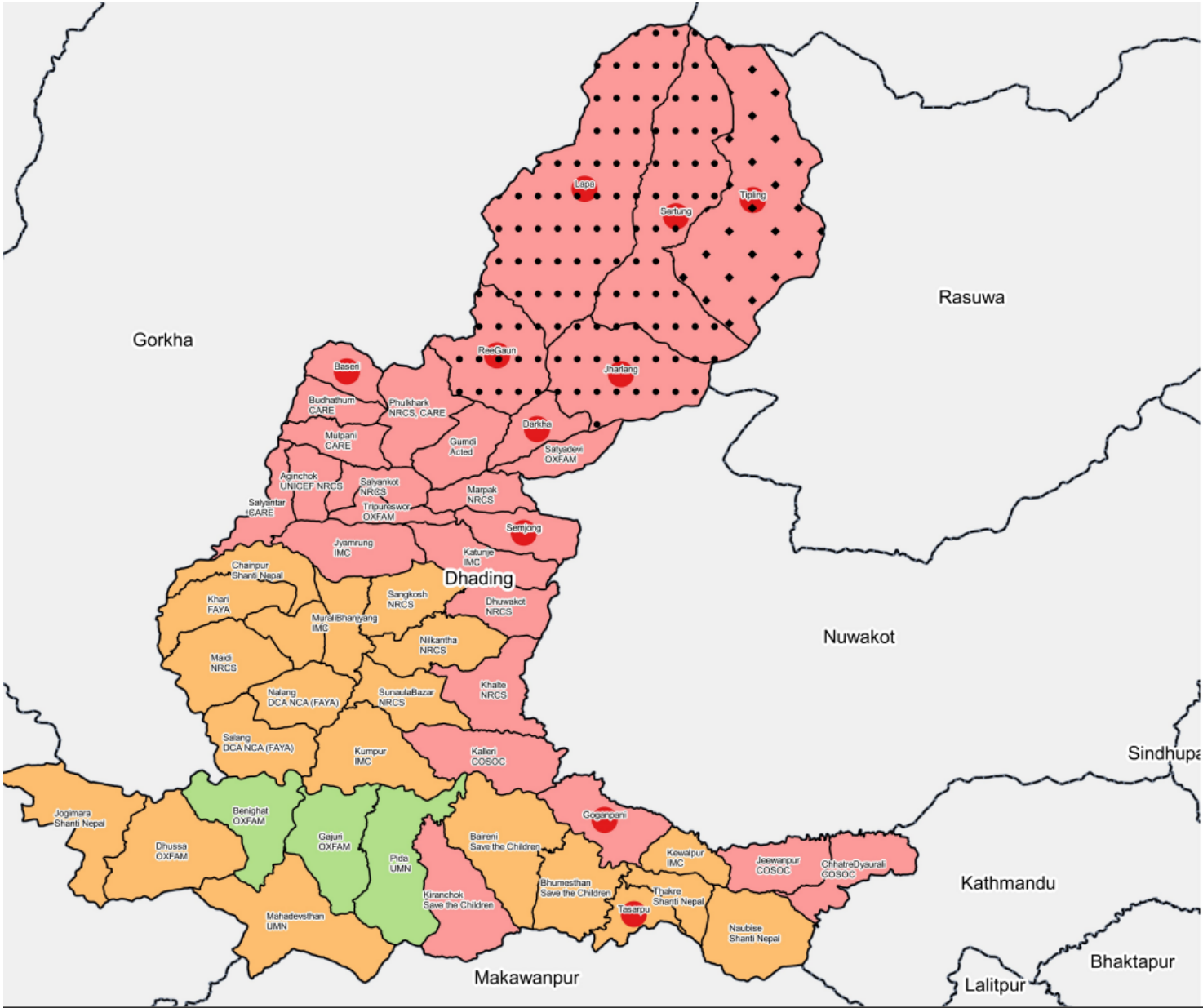


Date 21st June 2015

Data flow and analysis



- The district should be driver of analysis, using support from roving cluster support team
- Information must be fed to districts from WASH cluster secretariat
- WASH cluster secretariat to provide oversight and checks



Dhading - Focal Point Mapping

Nepal Earthquake Response



Assessment Rating

- A
- B
- C
- No Focal Agency
- Not accessible by helicopter
- Only accessible by helicopter

Map Number: 20150606_01
 Created: 2015-06-22T21:44:39

Data Sources: HDX, WASH Cluster

Disclaimer: The boundaries and names shown and the designations used on this map do not imply official endorsement or acceptance by the WASH Cluster

Queries to:
washclusterim.western@gmail.com

