

AGENCY: ORDO

It is not clear from the points taken, where the perimeter is of each settlement. Perhaps not all points were uploaded

- Perimeter (251)
- Density (195)
- Facility (136)
- Focus_Group_Discussion (19)

Is it correct that you have taken all the households within a segment of the settlement...



AGENCY: WOCCA

Perimeter is good, but no density and FGD... Perhaps not all points were uploaded.

- Perimeter (251)
- Density (195)
- Facility (136)
- Focus_Group_Discussion (19)



AGENCY: DBG

In this example, the perimeter is good and the focus group discussion also. The density checks are good, but more points need to be taken to ensure that the densities are representative. Please ensure that each density check has at least 15-20 household points.

- Perimeter (251)
- Density (195)
- Facility (136)
- Focus_Group_Discussion (19)

In this case, there are three FGD with 200 HHs, 20 HHs, and 180 HHs. It would be good to take two density checks for the 200/180 HHs and one density check for the 20 HHs.



AGENCY: SSWC

In this case, the perimeter is clear, the FGD is well located and the densities are well located.

- Perimeter (251)
- Density (195)
- Facility (136)
- Focus_Group_Discussion (19)

According to the FGD, there are 600 HHs living there. Please take 4 density checks of minimum 15-20 HHs.



AGENCY: ACF

In this example, the FGD is well located, the perimeter is well elaborated and pockets of density points can be seen, but not enough were captured.

- Perimeter (251)
- Density (195)
- Facility (136)
- Focus_Group_Discussion (19)

This is a concentration of 5 FGD. All settlements have less than 150 HHs. Please ensure to take one density check per settlement of at least 15-20 HHs.

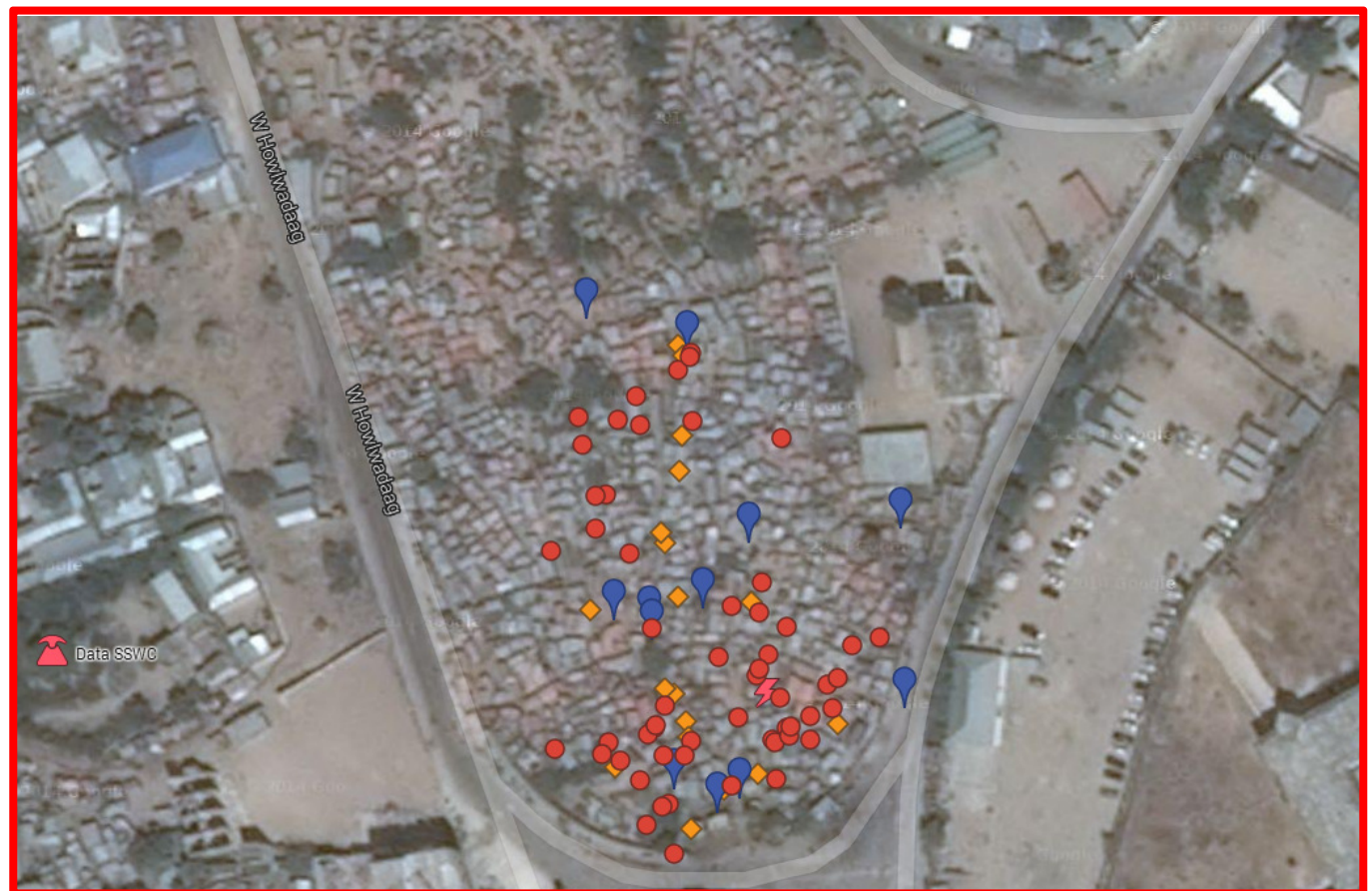


AGENCY: SSWC

Perimeter is not clear and density checks have been done everywhere. This is not clear...

- Perimeter (251)
- Density (195)
- Facility (136)
- Focus_Group_Discussion (19)

You can not have any density points outside the perimeter. See other good examples.



AGENCY: NRC

**It is not clear where the perimeter is.
Densities have not been taken properly.**

- Perimeter (251)
- Density (195)
- Facility (136)
- Focus_Group_Discussion (19)

It is not possible to have density points outside the perimeter.



AGENCY: SSWC

This is not clear at all. Are these test points??

- Perimeter (251)
- Density (195)
- Facility (136)
- Focus_Group_Discussion (19)

