

Flyover of Northern Dolakha

■ Location:

- General region spanning 30-40 kilometers north of Charikot to Lamabagur, the valley leading to Bigu, and the surrounding higher elevation VDC's.
- Would need time with helicopter pilots and map to define exact path

■ Key Observations:

- **Very high levels of infrastructure and housing damage,**
 - Seemingly increasing with proximity to epicentre and distance from Charikot
- **Extremely difficult access in many areas**
 - “35 kilometres as the crow flies, 300 walking”
 - Many sever landslide sites and destabilised ground
- **Tarpaulin and CGI Coverage remains sporadic at best**
 - Appearing more ordered and programmatic close to Carikot
 - Similarity of colour of tarpaulins in some villages indicating organised aid response
 - Predominantly blue and white tarps, silver cgi as distributed by aid community
 - more sporadic and Spartan further north
 - Multi colour tarps and a mixture of recycled, blue and new CGIlates
- **Self-construction of temporary shelter remains sporadic and would benefit form ongoing support**
- **Some shelter assistance appeared mismatched to community recovery**
- **Rubble remains a major impediment to reconstruction**
- **Very few signs of permanent reconstruction were visible**



Flyover of Northern Dolakha

■ Recommendations:

- Helicopters remain the only viable form of access to remote villages and hence appeals should be made for ongoing access to helicopter time for shelter actors.
 - Many areas will become even less accessible by foot during monsoon
- Interview pilots to mark on maps their view of areas still in need of critical assistance
 - Nepalese helicopter pilots who have been flying over this area for many years, and intensively over the last month delivering aid, know the names and location of most of the remote villages and could provide valuable insight into village level destruction and assistance.

- **Very high levels of infrastructure and housing damage,**
 - increasing with proximity to epicentre
- **Extremely difficult access in many areas**
 - “35 kilometres as the crow flies, 300 walking”
 - Many severe landslide sites and destabilised ground
- **Sporadic Tarpaulin and CGI Coverage**
 - Although new plastic sheeting or CGI was visible in most villages quality and coverage appeared to vary greatly, diminishing further from Charikot
 - CGI and Tarp coverage appeared more ordered and programmatic close to Carikot
 - Similarity of colour of tarpaulins in some villages indicating organised aid response
 - Predominantly blue and white tarps, silver cgi as distributed by aid community
 - More sporadic and Spartan further north
 - Multi colour tarps and a mixture of recycled, blue and new CGI

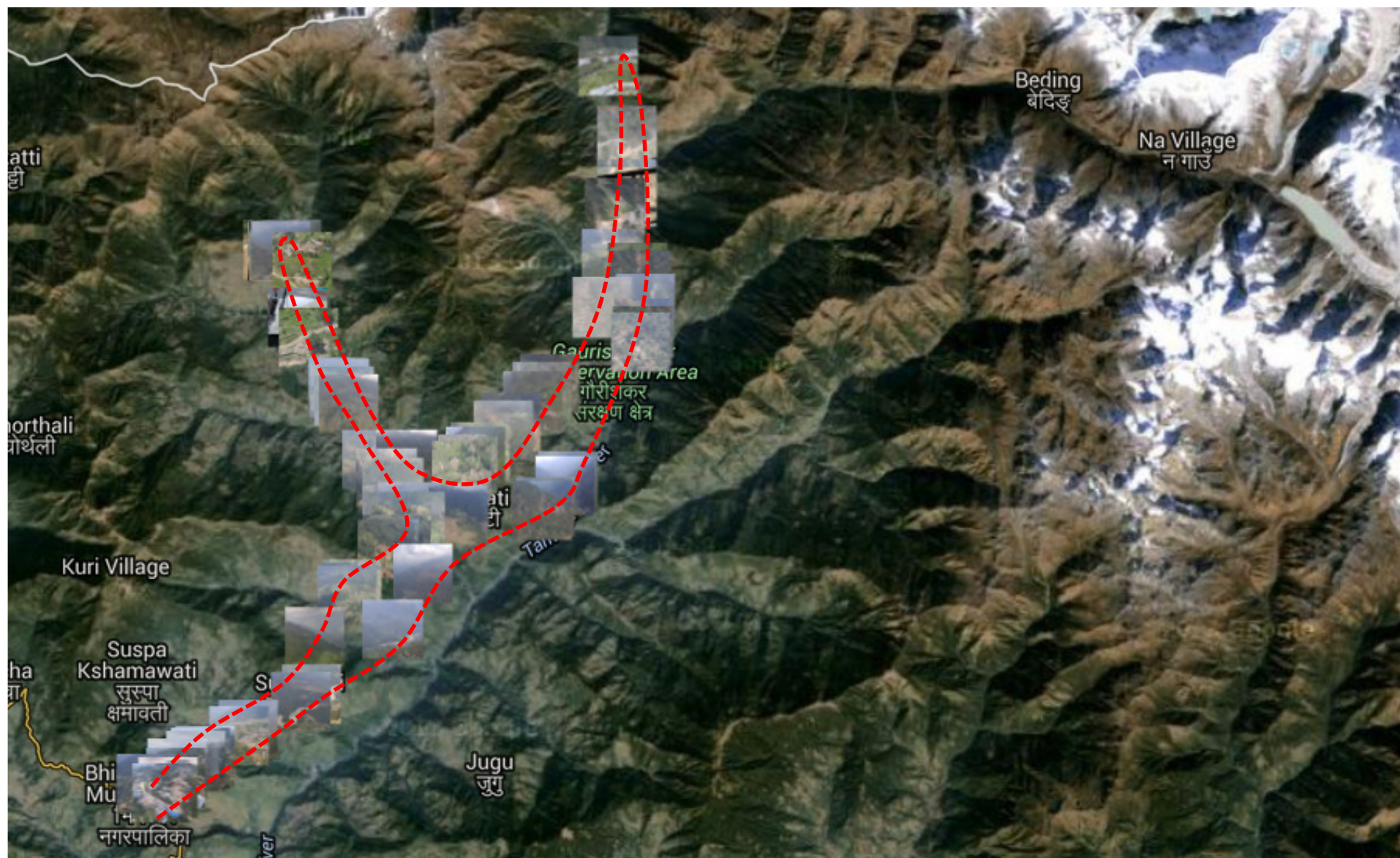




Approximate Flight Route

Charikot to the Upper Tama Koshi Hydroelectric project, up the Bigu valley and back across Khopchagu to Cahrikot

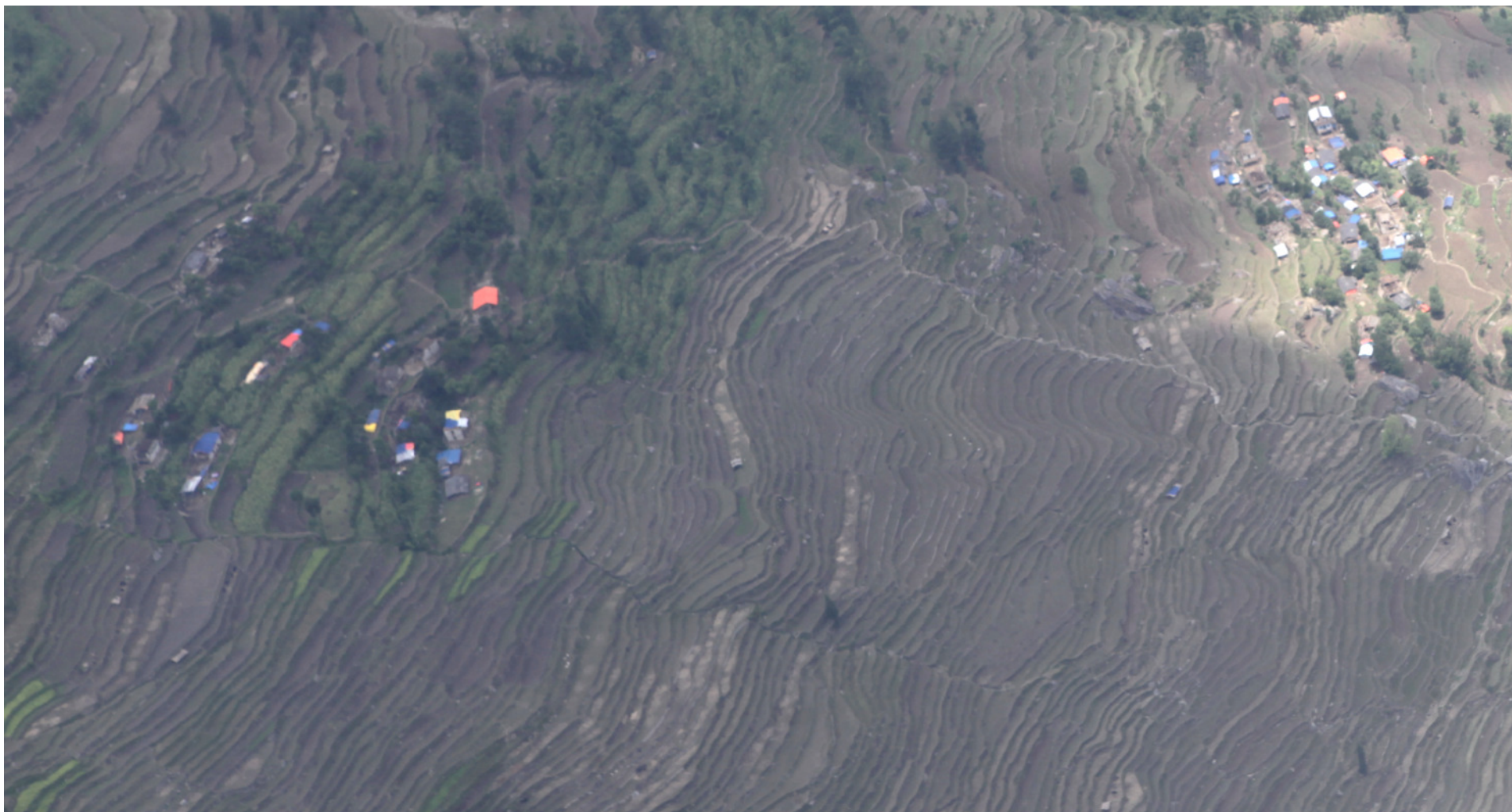
Photo locations



Visible tarp and tent distributions by aid agencies in villages close to Charikot



Visible tarp and tent distributions by aid agencies in villages close to Charikot



Visible tarp and tent distributions by aid agencies in villages close to Charikot



Landslide damage



Land slippage including plants, boulders and power lines



Shelter Cluster Nepal
ShelterCluster.org
Coordinating Humanitarian Shelter

Landslide damage



Landslide damage



Assistance remains sporadic and mixed in more remote villages



Visible combination of one standard IFRC tarp, a few locally procured tarps, recycled CGI and new privately procured blue CGI

Assistance remains sporadic and mixed in more remote villages



No real indication of assistance by aid agencies



Assistance remains sporadic and mixed in more remote villages



Assistance remains sporadic and mixed in more remote villages



Appropriateness of shelter response



- A range of shelter assistance types were observed.
 - Assistance packages that were dissimilar to the self recovery efforts of the affected community appeared largely unused or unoccupied

Infrastructure and housing damage appeared severe in most northern VCD's



Infrastructure and housing damage appeared severe in most northern VCD's



Infrastructure and housing damage appeared severe in most northern VCD's



Flyover of Northern Dolakha

- Additional photos may be viewed at:
<https://picasaweb.google.com/dave.hodgkin/20150612HeliFlightOverDohlaka>
- For individual full sized images please contact dave.Hodgkin@gmail.com
- Images are available for use, though please credit source

