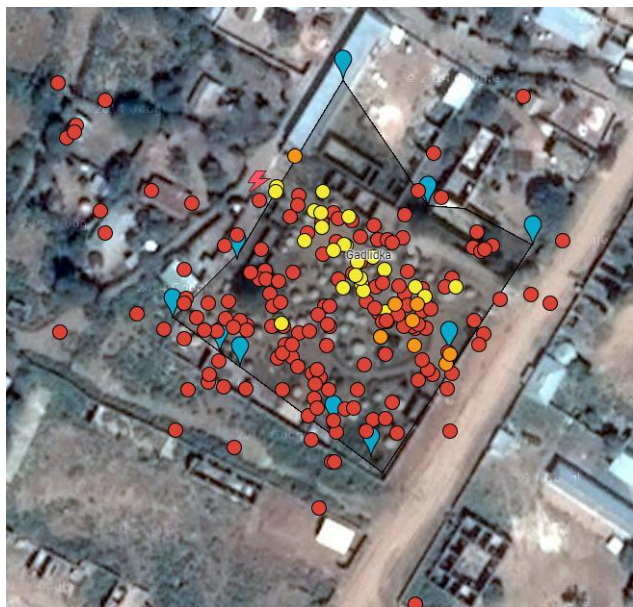


LESSONS LEARNED IN INFRASTRUCTURE MAPPING EXERCISE

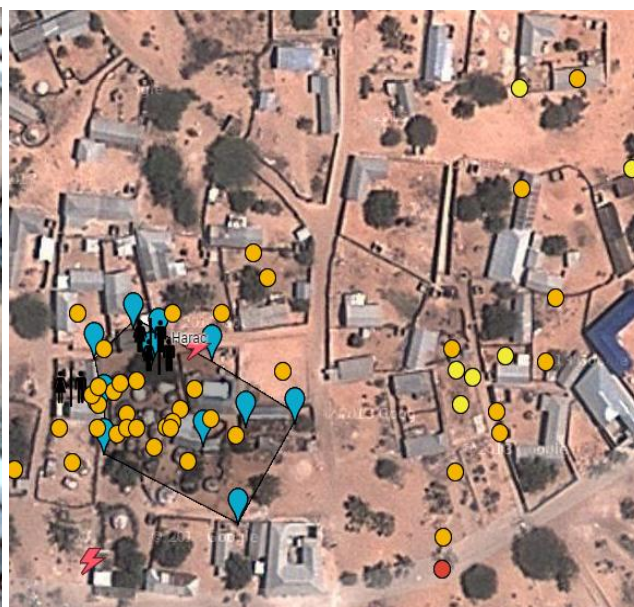
Density capture

1. DENSITY CAPTURE OUTSIDE THE PERIMETER

- Density captured outside the Perimeter of the IDP settlement; This implies that the perimeter of the settlement was not correctly captured
- Note: This mistakes is prominent in all mapping exercise done in 2014



Jowhar, Gaadiidka IDP settlement

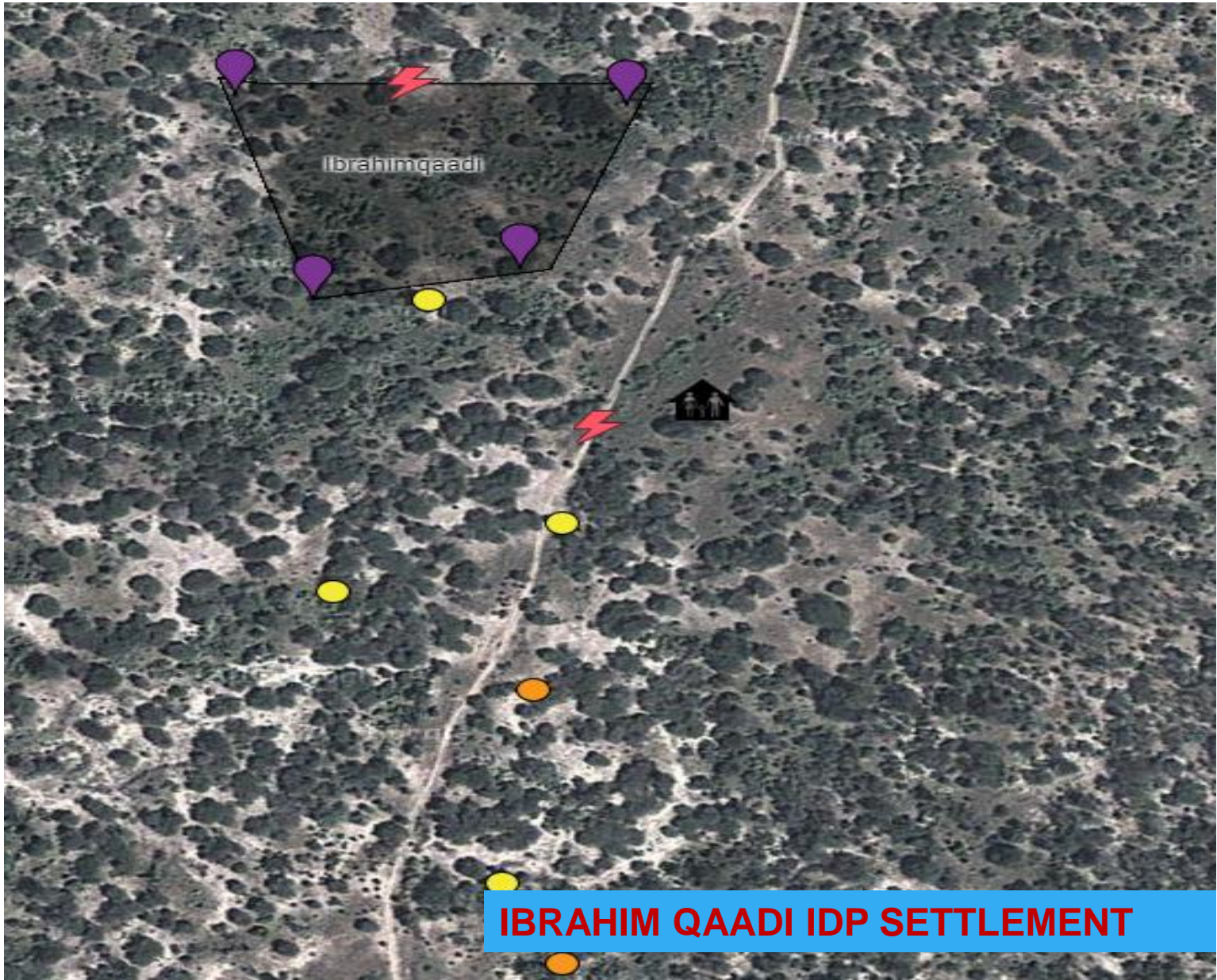


Kismayo, Harac IDP settlement



Baidoa-Towfiq IDP settlement



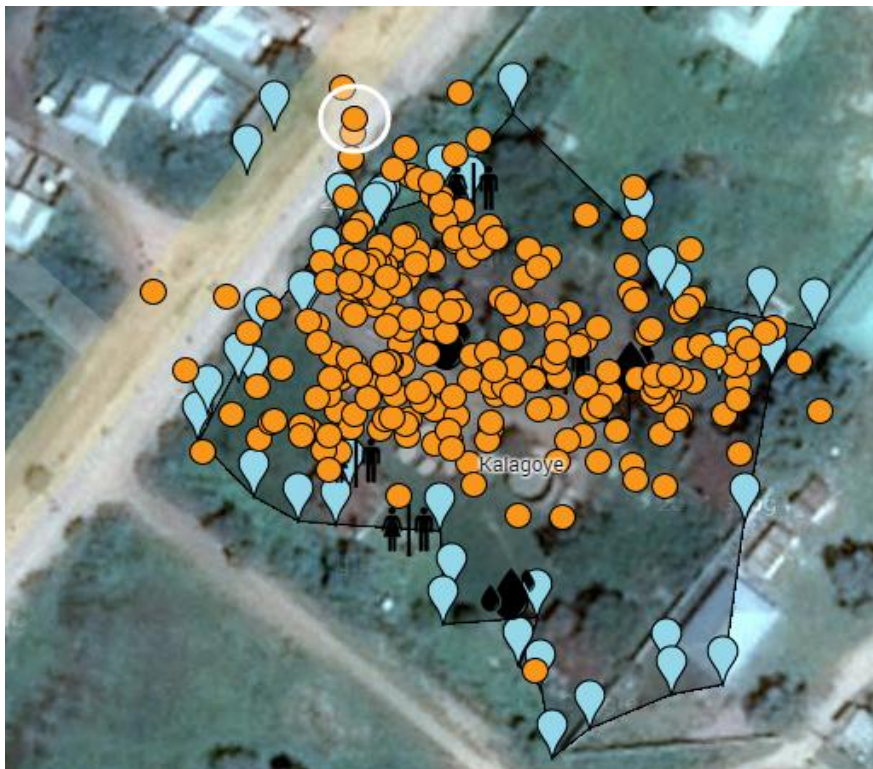


IBRAHIM QAADI IDP SETTLEMENT

Density capture

2. Density levels predetermined by Enumerators/Team leaders

- The density levels, i.e. High Medium and Low is predetermined before a mapping exercise is conducted in a settlement by team leaders, and the enumerators capture the density as specified by their team leaders (High, Low Medium)



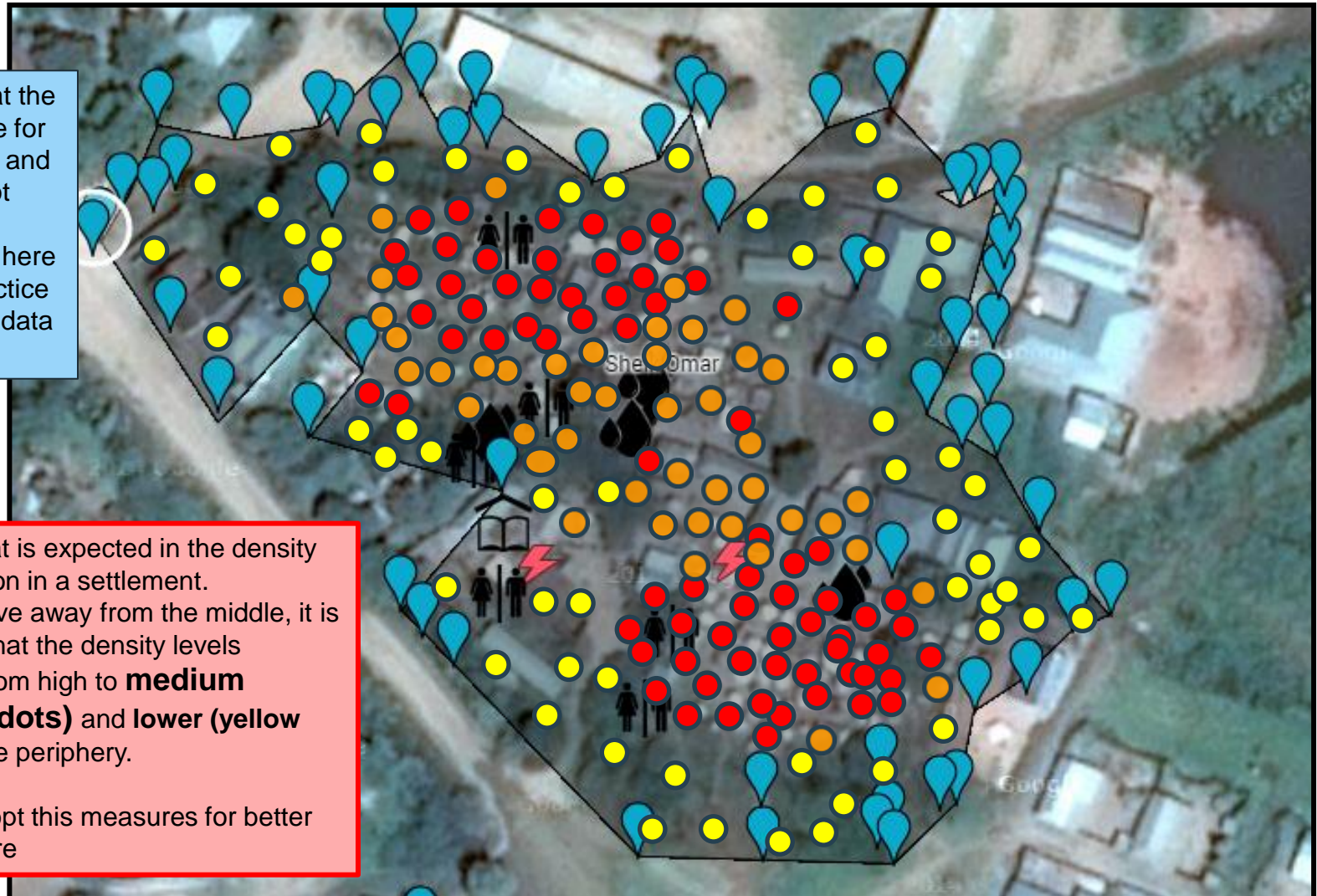
Jowhar; Kalagoye IDP



Jowhar; Sheik Omar

EXAMPLE: Overview of the best practice in a case study data capture

We noticed that the density capture for this settlement and others were not captured appropriately, here is the best practice for the density data capture

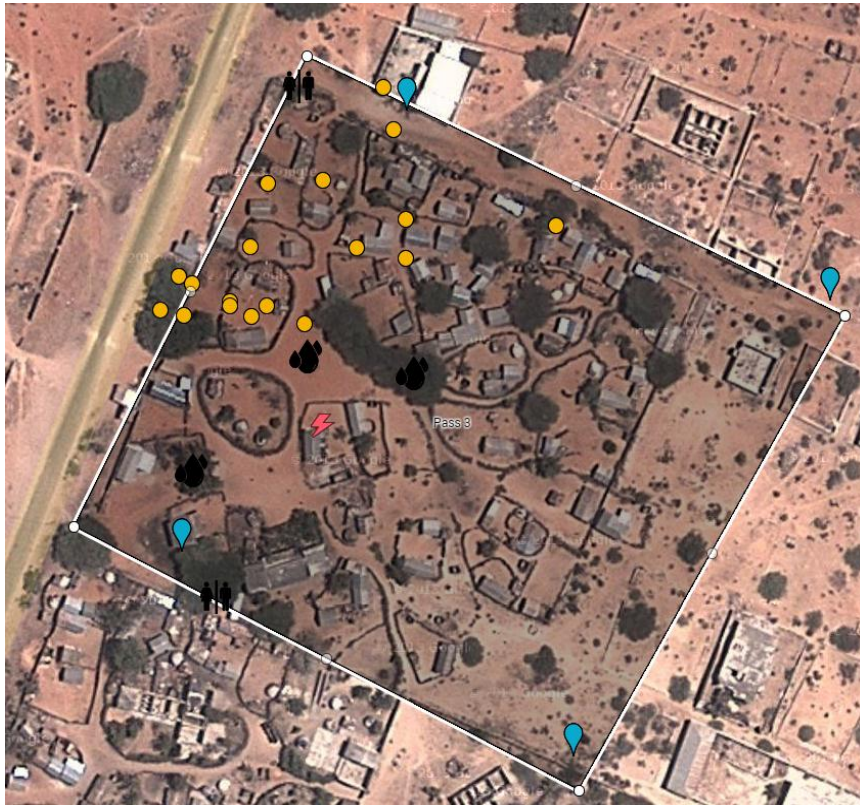


- This is what is expected in the density classification in a settlement.
- As you move away from the middle, it is expected that the density levels changes from high to **medium (Orange dots)** and **lower (yellow dots)** to the periphery.
- Please adopt this measures for better data capture

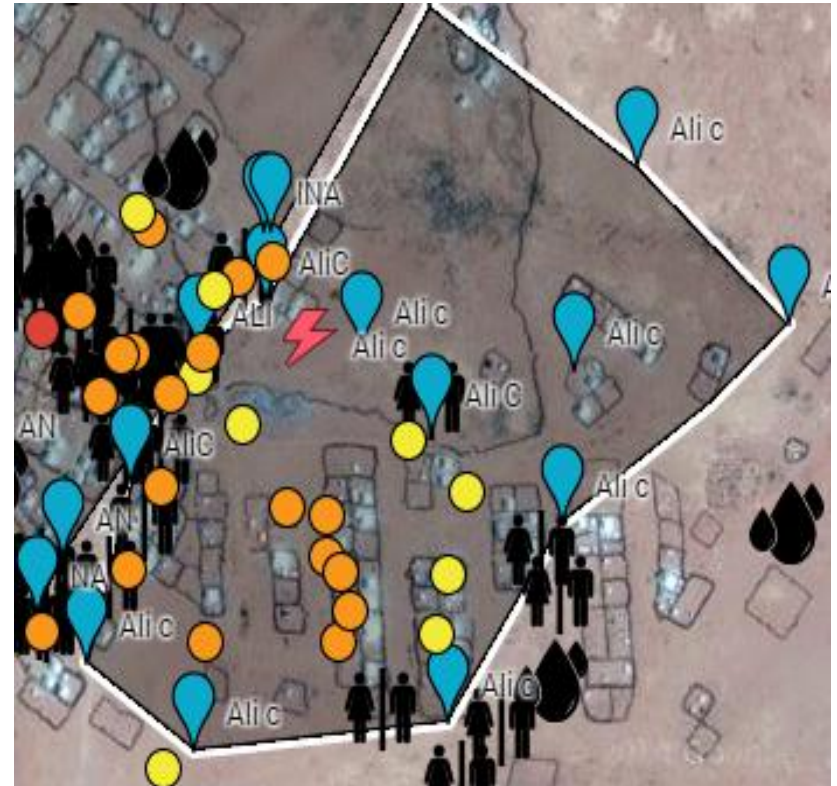
Density Capture

3. The density random Samples

The random samples in the settlements are poorly spread in the settlement during the data capture, this affects the statistical estimation.



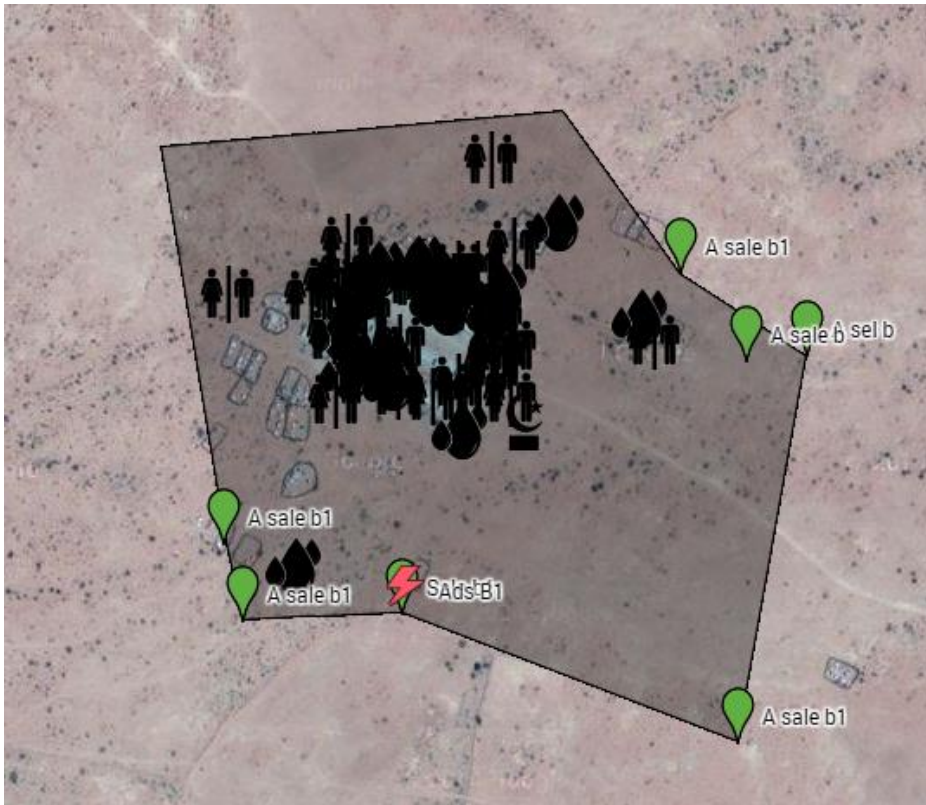
Baas IDP settlement: Kismaayo



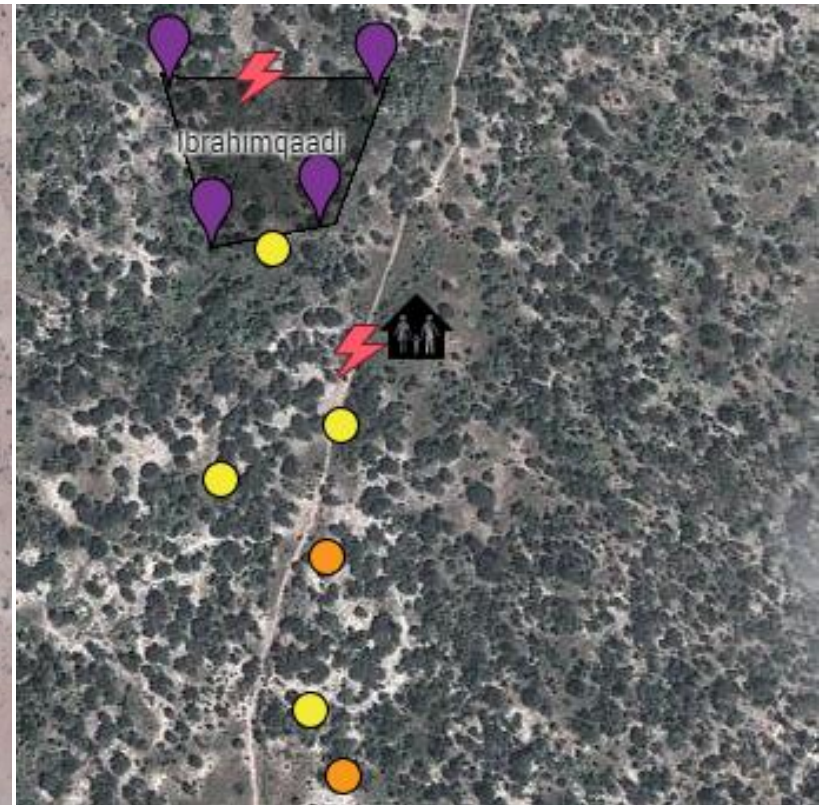
Ali C settlement: Burao

Perimeter Data Capture

1. Perimeter captured on arbitrary location as opposed to the households at the periphery of the settlements



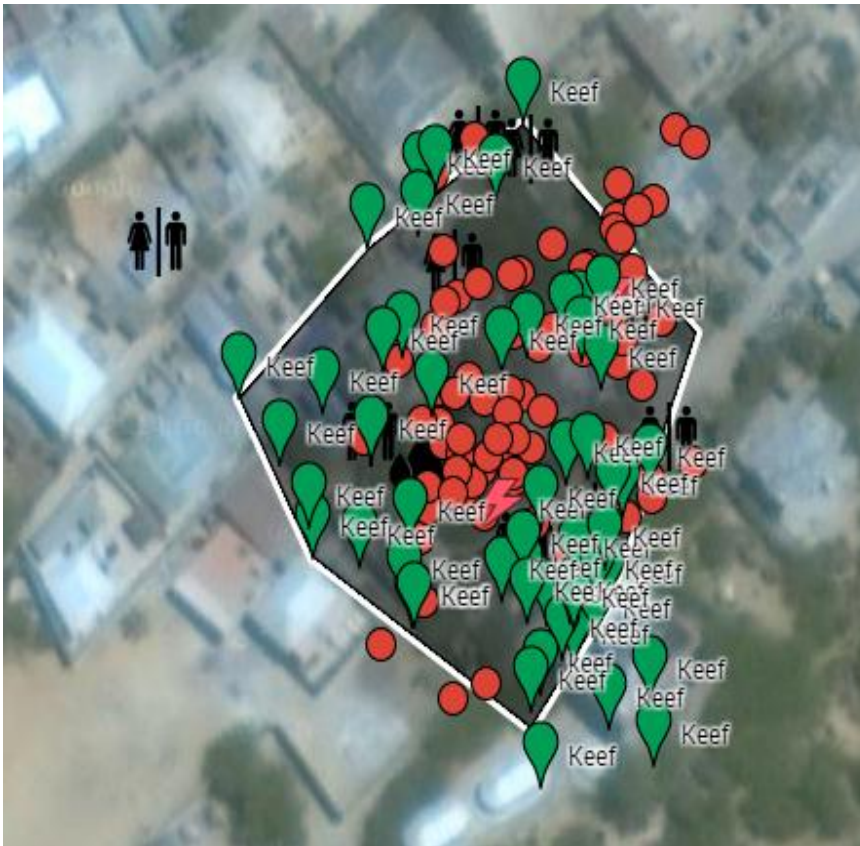
Adan Suleiman settlement; Burao



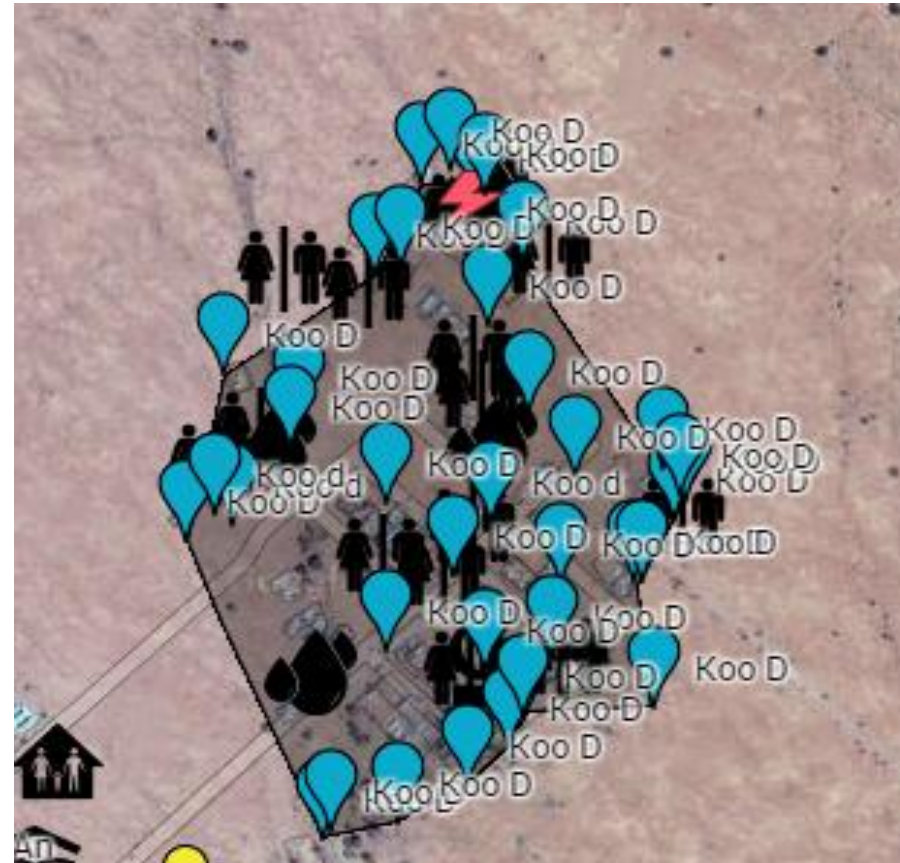
Ibrahim qadi -Afmadow

Perimeter Data Capture

- 1. Perimeter captured randomly on households



Keef settlement; Merka

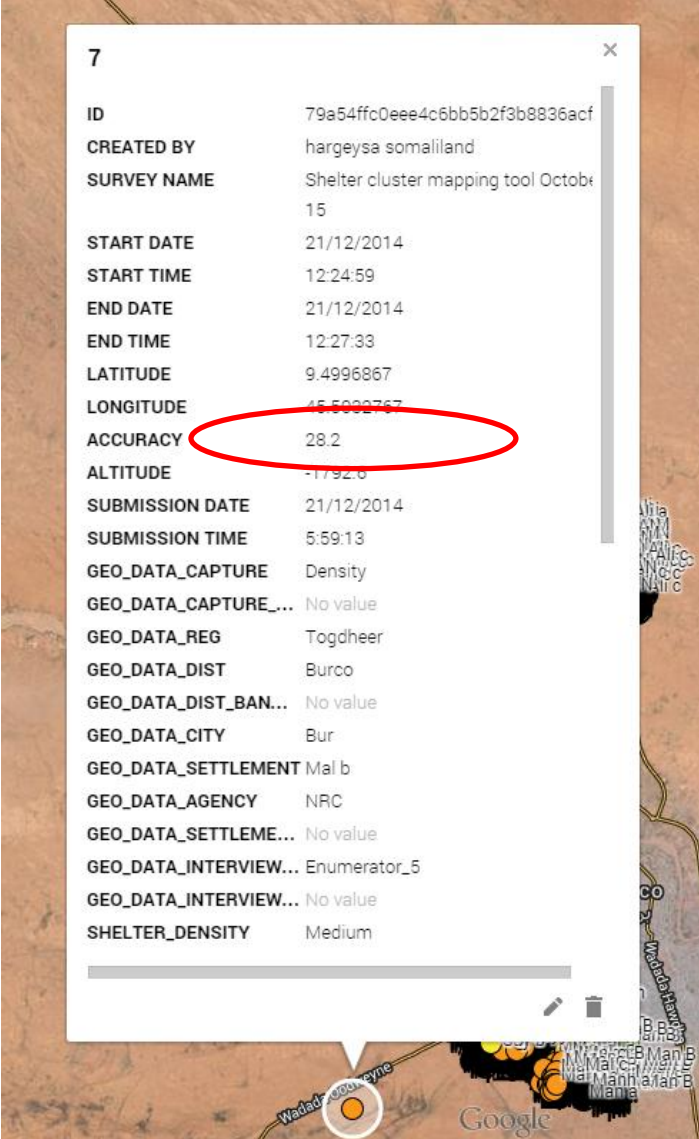


Koosar -Burao

General GPS Data Capture

1. GPS data accuracy not observed

- The GPS accuracies in some instances are not observed to 5m mark below, this therefore has led to displacement of points (densities, facilities, perimeter and KII) far from the intended settlement or marked into another settlement.
- This leads to displacement of points outside the intended area of capture impacts on overall data accuracy and reporting



7	
ID	79a54ffc0eee4c6bb5b2f3b8836acf
CREATED BY	hargeysa somaliland
SURVEY NAME	Shelter cluster mapping tool October 15
START DATE	21/12/2014
START TIME	12:24:59
END DATE	21/12/2014
END TIME	12:27:33
LATITUDE	9.4996867
LONGITUDE	45.5002767
ACCURACY	28.2
ALTITUDE	-1792.6
SUBMISSION DATE	21/12/2014
SUBMISSION TIME	5:59:13
GEO_DATA_CAPTURE	Density
GEO_DATA_CAPTURE...	No value
GEO_DATA_REG	Togdheer
GEO_DATA_DIST	Burco
GEO_DATA_DIST_BAN...	No value
GEO_DATA_CITY	Bur
GEO_DATA_SETTLEMENT	Mal b
GEO_DATA_AGENCY	NRC
GEO_DATA_SETTLEME...	No value
GEO_DATA_INTERVIEW...	Enumerator_5
GEO_DATA_INTERVIEW...	No value
SHELTER_DENSITY	Medium

