

National Shelter & NFI Cluster Coordination and Mosul

Agenda

1. Introductions
2. NFIs guidance update, SAG approved
3. CNSF Presentation East Mosul
4. East / West Mosul Multi Sectoral Coordination
5. West Mosul – Update & NGO Focal Points
6. AOB
 - IHPF 2017 Allocation
 - Funding
 - Reporting into Mosul Preparedness and AI
 - Operational Presence

1. Cluster Team Structure



Richard Evans - UNHCR

National Cluster Coordinator
+964 (0) 771 994 5694

coord.iraq@sheltercluster.org

Michel Tia - IOM

Information Management Officer -
National
+964 (0) 750 021 1720

im2.iraq@sheltercluster.org

Cornelius Weira - IOM

Sub National Co-Chair - Centre and South
Mobile +964 (0) 751 234 2548

coord4.iraq@sheltercluster.org

Michael Gloeckle - NRC

National Co-Chair - Technical Coordinator
+964 (0) 750 878 7793

coord2.iraq@sheltercluster.org

Shada Qahoush - Catholic Relief Services

Ninewa & Mosul Focal Point
+964 (0) 751 755 8451

coordroving.iraq@sheltercluster.org

Abdoulaye Dieye - NORCAP

Assistant National IM

im2.iraq@sheltercluster.org

Laurence West - UNHCR

Sub National Coordinator – KRI
Mobile + 964 771 911 0574

coord3.iraq@sheltercluster.org

2. NFI Guidance Update – SAG Approved

Type of Kit	V11	V12
MNFI	<p>Must contain all the following:</p> <ul style="list-style-type: none"> • Shelter grade tarpaulin; • Blankets (synthetic); • Mylar blankets; • Spoons; • Forks; • Cups; • Bowls; • Deep plates; • Basic first-aid kit; • Solar lantern; • Hand crank torch; • Collapsible jerry can; • Duct tape; • Rope; • Wet wipes; • Bag. 	<p>Must contain at least:</p> <ul style="list-style-type: none"> • Shelter grade tarpaulin x1; • Sheets/Blankets x 3; • Basic hygiene kit x 1; • Solar lantern/hand crank torch; • Collapsible water jerrycan; • Bag. <p>Additional items as appropriate:</p> <ul style="list-style-type: none"> • Mylar blankets x 3; • Spoons; • Forks; • Cups; • Bowls; • Deep plates; • Basic first-aid kit; • Duct tape; • Rope; • Wet wipes; • Baby kit; • Dignity kit



2. NFI Guidance Update – SAG Approved

Type of Kit	V11	V12
BNFI	<p>Contains at least 4 items of the following:</p> <ul style="list-style-type: none">• Shelter-grade tarpaulin;• Blankets (possible to replace with sheets in summer);• Mattresses;• Hygiene Kit (30 day);• Kerosene or Gas Cooker / Stove;• Kitchen Set;• Solar Lantern;• Water Jerry Can.	<p>Contains at least these 8 essential items:</p> <ul style="list-style-type: none">• Shelter-grade tarpaulin;• 6 Blankets (possible to replace with sheets in summer);• 6 Mattresses;• Kerosene or Gas Cooker / Stove;• Kitchen Set;• Solar/ hand crank light;• Basic hygiene kit;• Water jerry can (plus Kerosene Jerry Can if Kerosene cooker/Stove is supplied).

2. NFI Guidance Update – SAG Approved

Type of Kit	V11	V12
Summer BNFI Kit	<p>Contains minimum 6 items – at least 4 from BNFI plus 2 seasonal NFI item:</p> <ul style="list-style-type: none"> • Fan; • Cool box. 	<p>Contains the 8 essential items in BNFI kit plus 2 seasonal NFI items:</p> <ul style="list-style-type: none"> • Cool box; • Extra water jerrycan. <p>Additional item as required:</p> <ul style="list-style-type: none"> • Shading kit • Clothing • Fans
Winter BNFI Kit	<p>Contains minimum 6 items – at least 4 from BNFI plus 2 seasonal NFI items:</p> <ul style="list-style-type: none"> • Thermal roll mat; • Carpet; • Kerosene heater; • Kerosene jerrycan; • Blankets 	<p>Contains the 8 essential items in BNFI kit plus 2 seasonal NFI items:</p> <ul style="list-style-type: none"> • Kerosene heater; • Kerosene jerrycan. <p>Additional items as required:</p> <ul style="list-style-type: none"> • Thermal roll mat; • Carpet; • Clothing



Shelter relief in East Mosul

April 12th, 2017





Street scenes in Al Noor and Al Khadraa neighbourhoods, CNSF



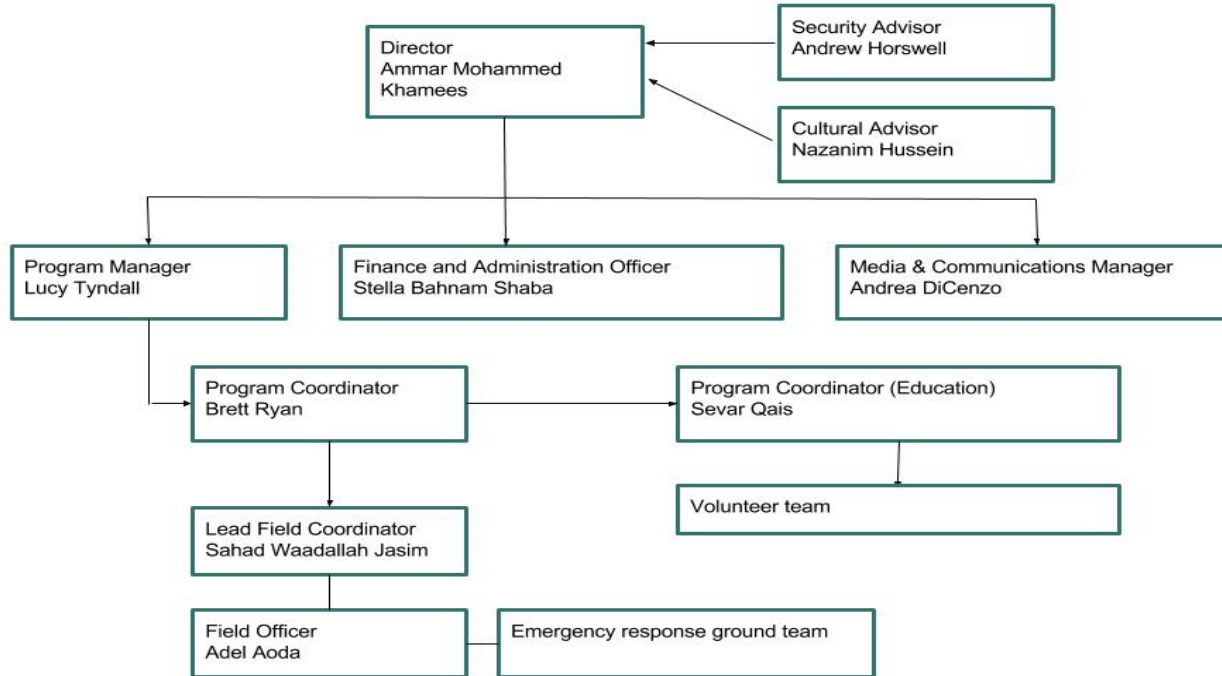
Introduction

- CNSF is a (very) small local NGO, founded in April 2015 by Ammar Khamees, Director.
- Mission: **provide critical support and deliver hope to those most in need.**
- Strives to also identify opportunities for lasting institutional support, and help communities impacted by war rebuild their lives for themselves.
- Leverages its capabilities to provide quick, flexible emergency response in hard-to-reach areas
 - » Fallujah, Ramadi, Sinjar (in cooperation with Rise Foundation)
 - » CNSF is currently focused on providing frontline relief in Mosul (East and West)
- Focus on working with others and empowering the communities in which it serves, through local engagement, open dialogue and capacity building.



The Team

Critical Needs Support Foundation (CNSF)



(Basic) Program framework

- Underpins program planning with adherence to core humanitarian principles and organisation values.
- Promotes a pragmatic and flexible approach to program planning, to ensure community needs are met, programming is relevant to context, and is also implemented within the capacity of the organisation.
- Encourages a culture of open dialogue and support between CNSF staff, key stakeholders and local partners to ensure identification of challenges; addressing them, while continuing to identify areas for improvement.
- Leverages networks, volunteers, private donors, partnerships with other INGO and NGO (ZOA, Oxfam, UN Habitat) for funding and items
- Budget: small, it will make your eyes water. Core constraints are covering our operational costs, particularly staff salaries.



Assessment approach

- RNA, and more detailed needs assessment.
 - Flexibility/adaptation in ongoing activities in complex environments that pose security challenges, or have particular local sensitivities to consider.
- A pragmatic ‘good enough’ approach, while addressing certain basic standards. It analyses and identifies:
 - The most vulnerable IDP/beneficiaries and their priority needs across the relevant sectors (WASH, Food, NFI, Protection, Livelihood, Education, Shelter).
 - The most appropriate response options to an emergency or ongoing population needs in a crisis;
 - The security and access challenges;
 - Qualitative understanding of the socio-economic and cultural context.
 - What added value CNSF can bring to the affected population and overall context
 - What other organisations/NGOs may be able to assist with needs which are beyond the scope of CNSF’s capabilities.





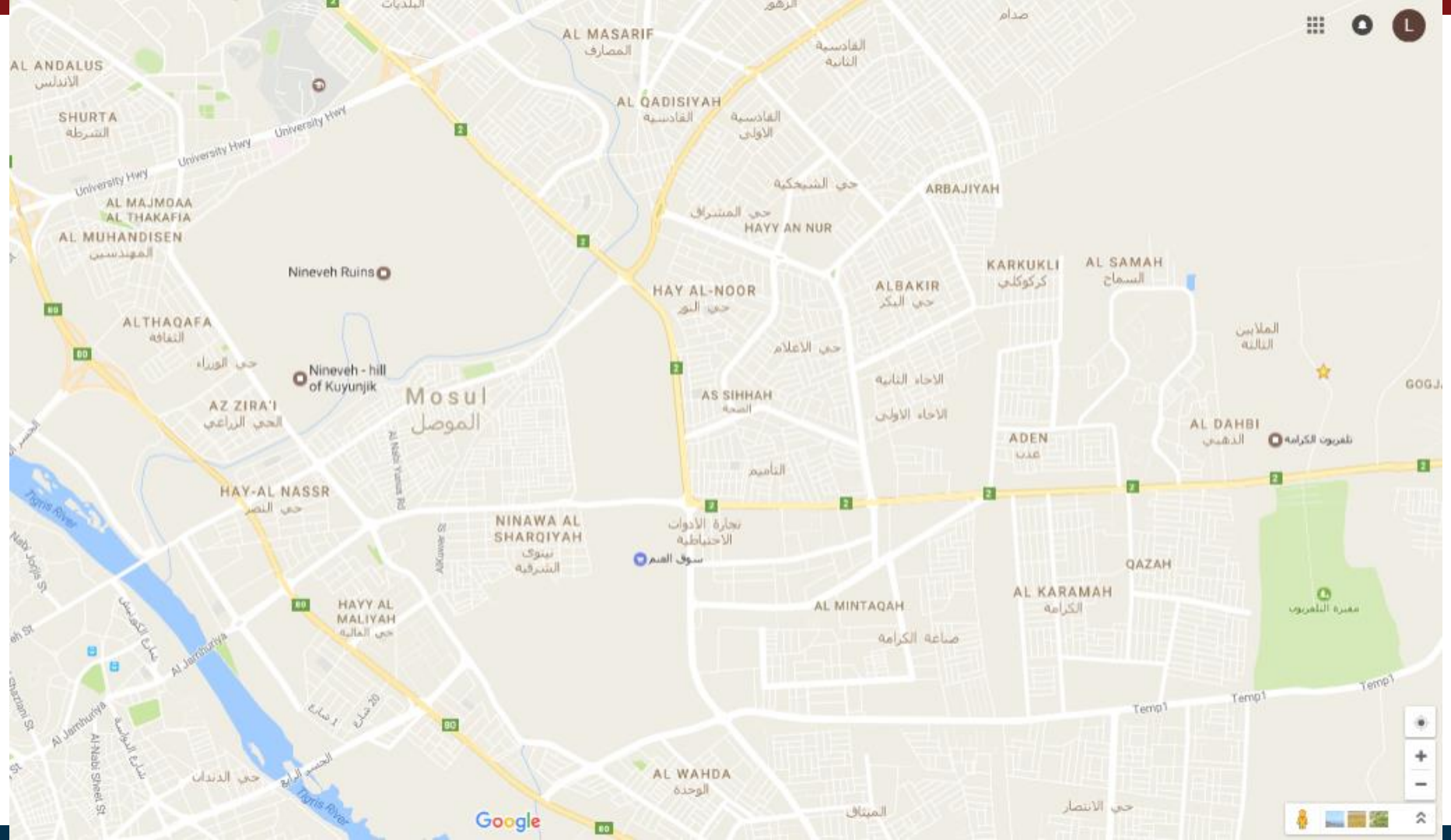
Ammar doing assessments in Qayyarah, South Mosul.



Shelter relief in East Mosul

- Since the beginning of November 2016, CNSF has built its operational capacity in East Mosul through engaging and empowering local partners, establishing a secure storage facility in Bazwaya (along the Erbil-Mosul road) and successfully maintaining humanitarian access.
- In the quarter starting 1st January 2017, CNSF has provided water, food, clothing, kerosene and shelter restoration assistance to vulnerable neighbourhoods Siddiq, Al Noor, Al Khadraa, Al-Jamiaa, Al-Mussarf, Al Quds and Al Samah.
- Immediate shelter restoration assistance is on-going, while distributions will vary depending on priority needs and organisation capacity





Context

- Residents have consistently expressed the wish to stay in their homes at whatever cost; influx of IDP (reportedly 5000 new arrivals in Al Khadraa)
- Families are grappling with infrastructure damage e.g. blown-out windows from indirect fire (mortars, gunfire)
- In neighbourhoods of Al Noor, Al Samah, Al Quds and Al Khadraa, 30 – 33% of the buildings are uninhabitable.
 - Families whose homes are completely destroyed will move into unfinished homes, or stay with others (over-crowding)
- CNSF has identified approximately 700 homes requiring immediate repairs to windows and doors which have been destroyed by shrapnel and shockwaves from explosions.





Wahleed's House, Al Noor

Solution

- An immediate simple solution is the provision of tarpaulin to cover windows and weather-proof the buildings.
 - Use of Basic Emergency Sealing Off Kits (BESK), Emergency Sealing Off Kits (ESOK), Mobile Emergency Shelter Kits (MESK)
 - Provision of MESK from UN Habitat (for use in East and West)
 - Provision of BESK and ESK from ZOA (for use in East)
- Employ a teams of local workers to conduct the repairs
 - In teams of 4, going house by house.
 - Toolkit and safety items provided.
- Access, community liaison: Director, Lead Field Coordinator
- Reporting, monitoring & evaluation systems: Project Manager, Program Manager





Local workers in East Mosul undertake emergency shelter repairs on homes.





Cost

Monthly Reconstruction Expenses	Cost (USD)
8 Staff (2 teams of 4)	\$2000
Transport	\$150
Incidental Equipment	\$100
Total	\$2250

Sample budget provided to ZOA

- Anticipate that approximately 120 homes will be repaired by each team per month
- Covers 240 homes in total
- Excludes donations of BESK, and ESK provided by ZOA
- Operation costs for CNSF management and oversight team not counted.
- M&E: Reconstruction report completed by local team, monthly report completed by Project Manager (with field visits)
- Beneficiary feedback: open dialogue with CNSF ground-team, visual inspections, (Director, Lead Field Coordinator), beneficiary survey, IDP Call Centre
- Reporting to Shelter/NFI ActivityInfo





Challenges

- Provided emergency sealing off kits to approx 550 homes.
- Budget constraints: covering operational and transportation costs, and consistent funding for ongoing work.
 - Had to cease operations in February, as could not cover labour costs. Looked for more funding options, and established a partnership with ZOA.
- Building ground team capacity and reporting systems
 - Reporting has a detailed outline of beneficiaries and compile information which will allow both CNSF and ZOA to have a more complete understanding of the most vulnerable households in the neighbourhoods where they are operating; i.e. Female Headed Households and any individuals supporting IDPs and/or vulnerable individuals.
- Bad weather slowing progress in March.



Next stage: Windows and Workers

- Replacing broken windows in 1000 Homes in Al Khadraa, and severely damaged/non-existent curtains.
 - Benefits: more durable weather-proofing, dignity, privacy
 - Target beneficiaries: vulnerable households with higher numbers of individuals, female-headed -households, those hosting IDPs and caring for vulnerable individuals.
 - 1526 men from Mosul
 - 1654 women from Mosul
 - 1354 boys from Mosul
 - 1466 girls from Mosul
- Main outcome: to restore dignified shelter, protection from harsh summer and winter climates and basic privacy for vulnerable families in Al Khadraa, East Mosul.
- Community-led and driven: staff employed from Mosul e.g. Field Coordinator, Saif, and employment for locals workers to install the windows.
- Gender-balance: women to make curtains, and installed in the most vulnerable homes (over-crowding, female-headed households)



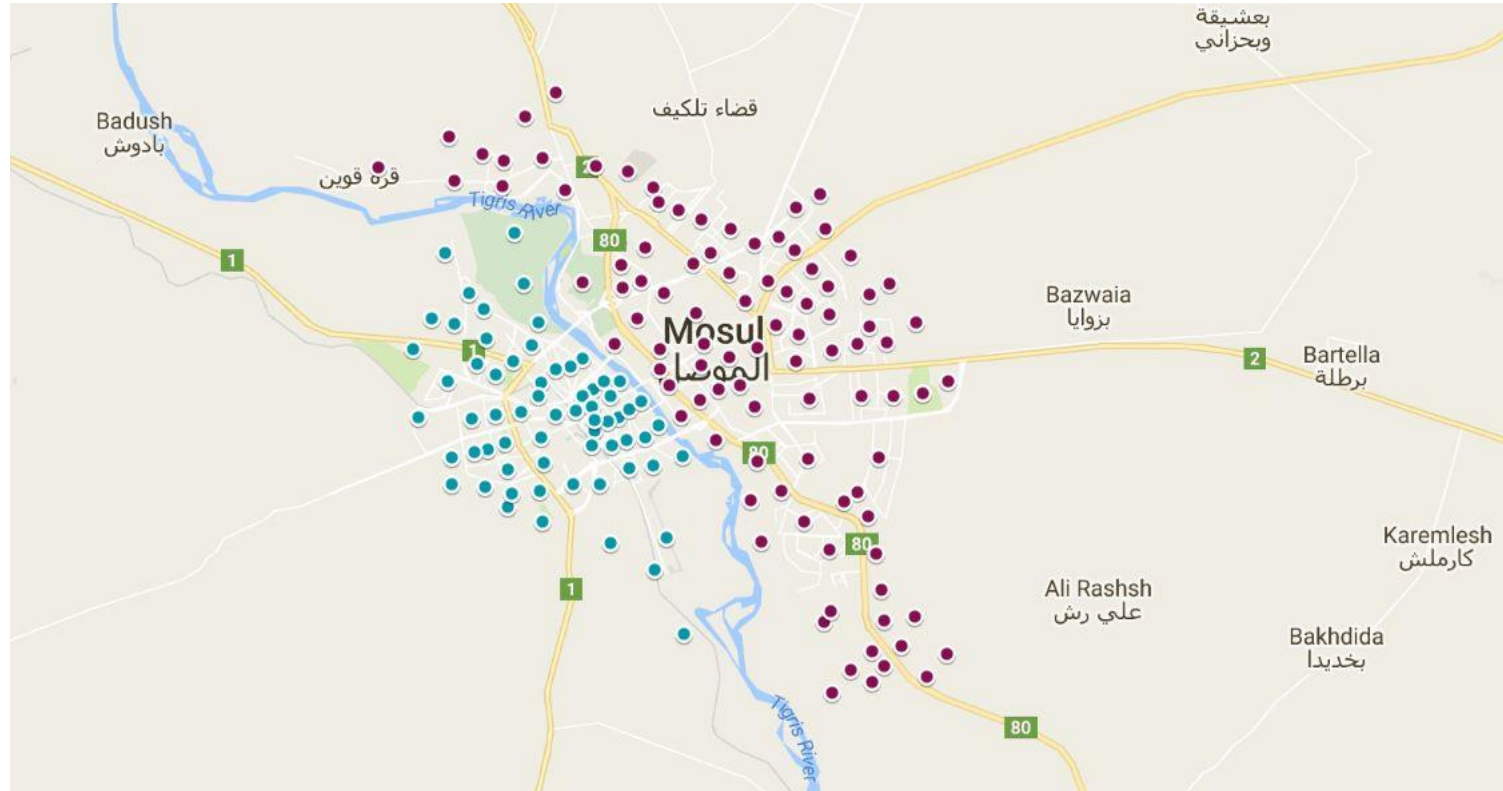




Shelter Cluster – Iraq
sheltercluster.org
Coordinating Humanitarian Shelter

Makeshift curtain, Al Khadraa

4. East / West Mosul – Multi Sectoral Coordination



4. East / West Mosul – Multi Sectoral Coordination

CWG: East Mosul Operational Update

- Implementation:
 - Intisar (Mercy Corps)
 - 433 HH Assessments; 128 eligible HH for one-off emergency cash transfer (400 USD)
 - Al Karama (Mercy Corps)
 - 279 HH Assessments; 121 eligible HH for one-off emergency cash transfer (400 USD)
 - Rashidya (DRC)
 - Assessments this week.
- Neighbourhood Level Coordination
 - Linking SNFI and Cash Partners

4. East / West Mosul – Multi Sectoral Coordination

CWG: East Mosul Operational Update

- Data Analysis
 - 89% report being unable to meet basic needs.
 - Shelter, food, health care being top reported needs
 - Coping strategies:
 - Restricted food consumption by adults: 68%
 - Buying commodities on credit: 93%
 - Reducing overall spending, including basic needs: 69%
 - Access to assistance: 6% reported having received aid
 - Access to livelihoods: 64% with non-working members
 - Debt: 91% HH reported having debt

5. West Mosul – Update & NGO Focal Points

1. Accessible villages south of West Mosul:
Aris, Quis Fariki, Albu Saif , then suburbs of W Mosul
2. Accessible villages west of West Mosul :
Tal Kaysum, Sheik Yunis, all the way to Badush
3. Al Agha Camp, south of Talafar (near Tel Jarabia):
Terres Des Hommes, Contact: francis.hughes@tdh.ch

5. West Mosul – Update & NGO Focal Points

**Jowsaq, Dendan, Dawassa, Tayran, Gizlani,
Wadi Hajar**

Oxfam/Muslim Aid,

Contact: trobenson@oxfam.org.uk

**Mansur, Mamoon, Electrical Station,
Baghdad Circle**

SIF, Contact: moreaux@secours-islamique.org

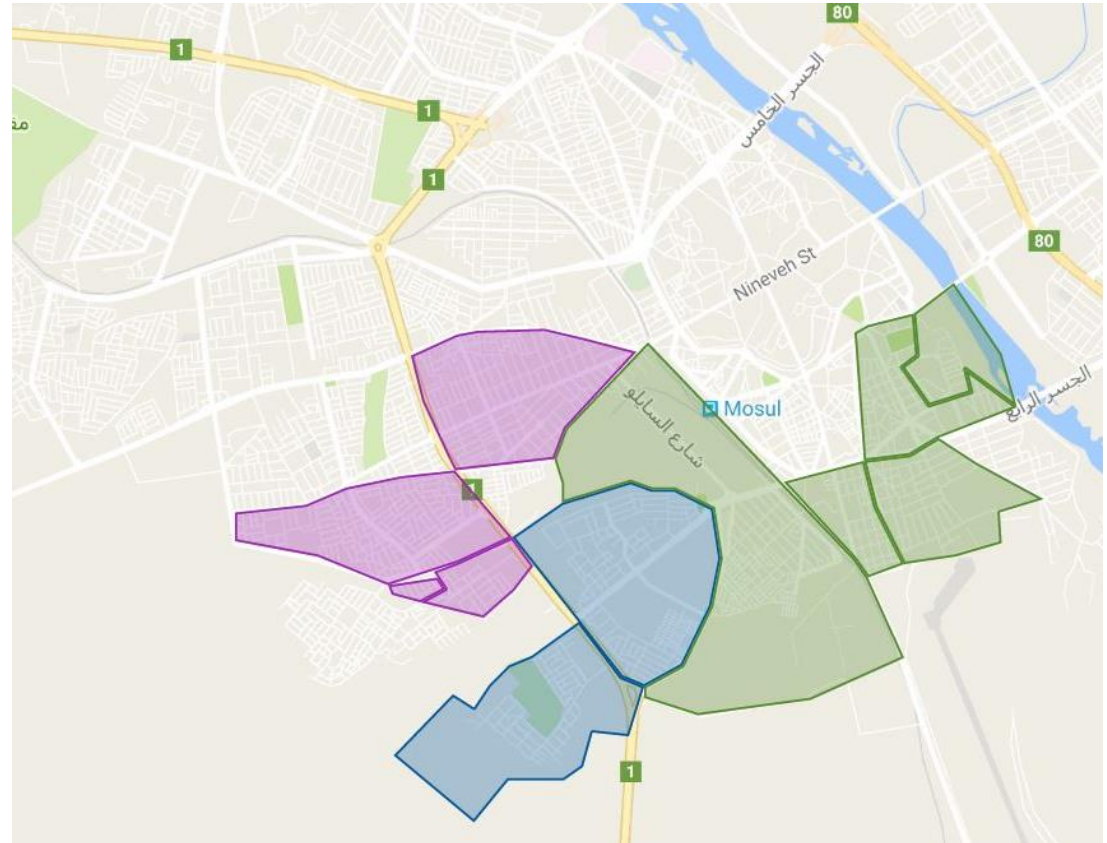
**Amil, Shuhada, Mullemin, Mosul Jadida
Human Appeal,**

Contact: omar.ali@humanappeal.org.uk

Tal Kaysum (not in picture)

Muslim Aid,

Contact: zeiad.maam@muslimaid.com



6. AOB

- IHPF Update
- Funding status of Agencies
- Reporting into Mosul Preparedness and AI
- Operational Presence
- Other



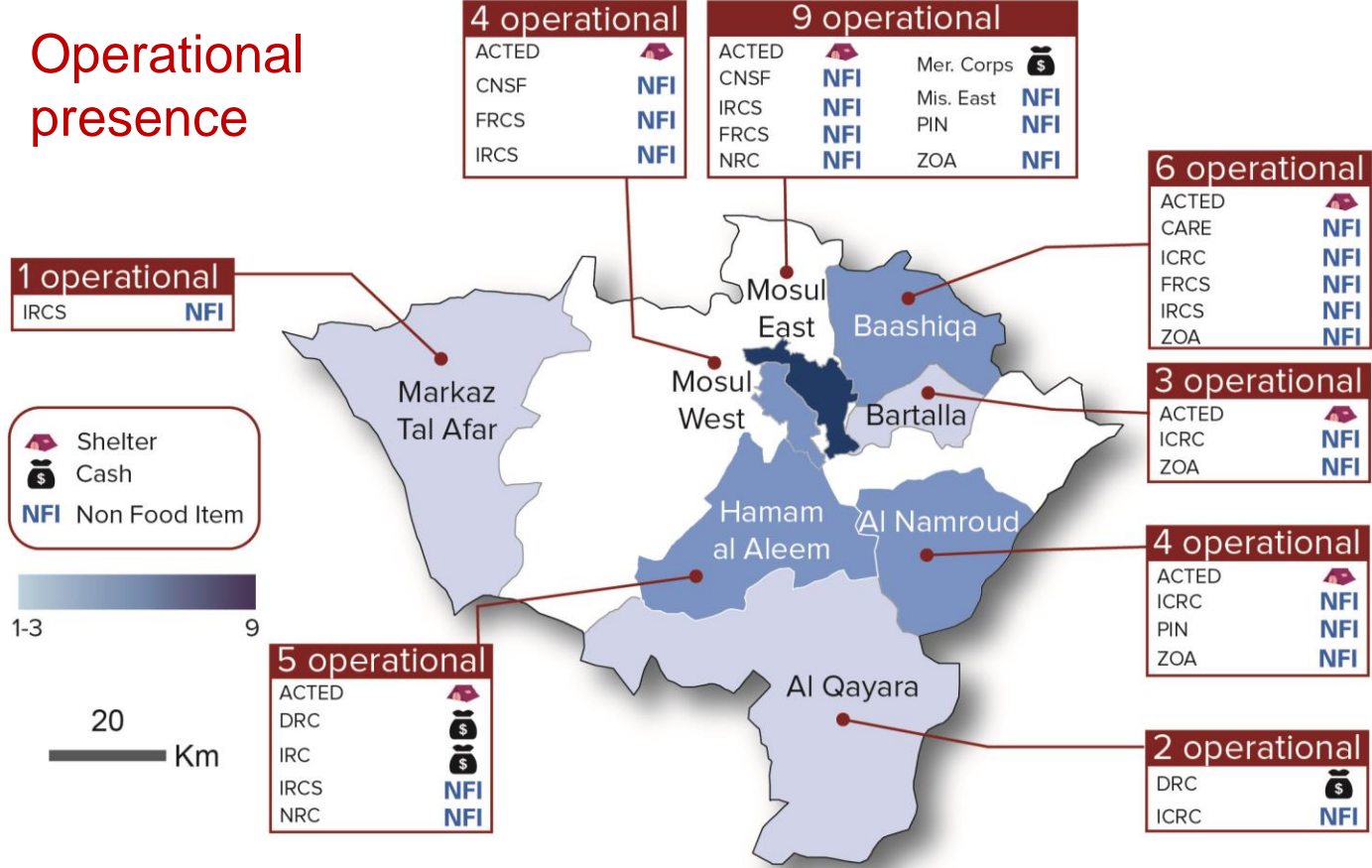
Adobe Acrobat
Document

*Next meeting will be Wednesday 26th April, 11:00am **at NCCI***



Out-of-Camp Mapping

Operational presence



Out-of-Camp Mapping

