

Aleppo: Sector partners reach communities in East Aleppo

UNHCR, with its partner Al-Ihsan Charity, has been responding to returning families in Al-Shaar neighborhood in eastern Aleppo. Its distribution point has been serving around 300 families (estimated 1,500 persons) on a daily basis with core non-food items such as, mattresses, plastic rolls, kitchen sets, jerry cans, blanket and solar lamps.



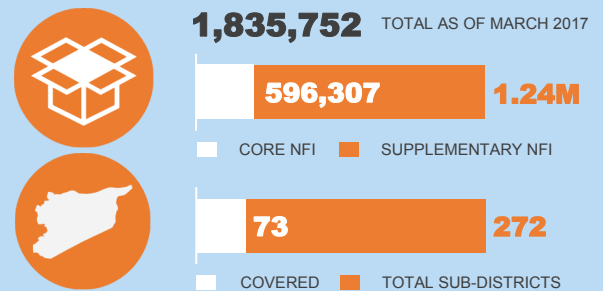
© UNHCR Syria / B. Diab

## KEY POINTS

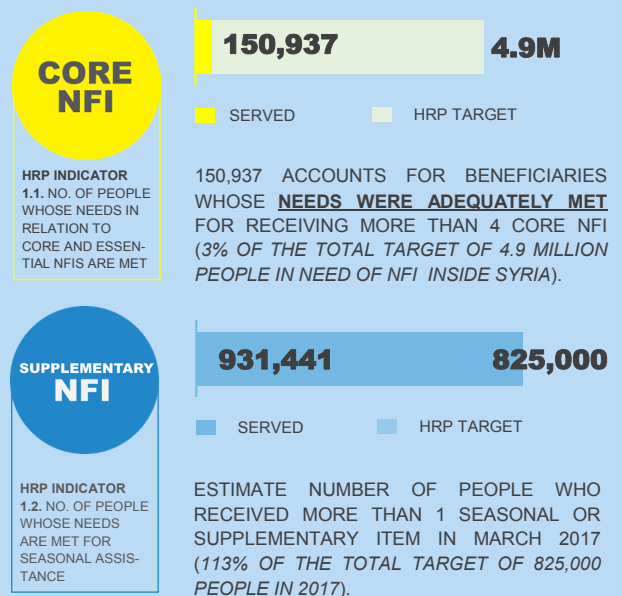
- Sector partners participated in an inter-agency convoy on 24th of March to seven hard-to-reach communities of Wadi Barada valley in Rural Damascus governorate. Collectively, the convoy served at least 24,500 people from the communities of Barhaliya, Deir Qanoun, Deir Maqran, Hseiniyeh, Kafir Elzeit, Kafr Elawamid, and Suq Wadi Burda. Along with other provisions, around 11,000 beneficiaries received children clothing and blankets from NFI sector partners (IOM, UNICEF, UNHCR). Humanitarian support to the Wadi Barada valley, with an estimated 33,500 people in need, is still needed as access is still limited. Among the priority NFI needs identified at that time include, high thermal blanket and special winter clothing kit.
- In March, sector partners were quick to provide support to the most vulnerable population in newly accessible neighborhoods in Aleppo City. UNHCR with Al Birr, Al Taalouf and SARC collectively served at least 124,000 people with 50,000 basic household items, and 135,000 supplementary items including winter kits. Return movement to these newly accessible neighborhoods is happening in a small scale as the majority of the areas remains uncondusive for return due to lack of basic services and infrastructure damage that put the safety of the returning population at risk. Access to electricity is one the urgent and pressing concerns confronting the returning population.
- To better address information management related issues of the sector, it organized an IM Support Group composed of IM or reporting focal points from all sector partners. The first meeting was conducted on the 22<sup>nd</sup> of March and attended by 14 representatives from 9 sector partners. There was an in-depth discussion on partners' regular needs assessment and monitoring activities as well as challenges on reporting. The group agreed to meet every other month. The group also serves as a venue to share expertise and technical IM skills.

## NUMBERS IN BRIEF

### TOTAL NFI DISTRIBUTED



### BENEFICIARIES ADEQUATELY SERVED



### OVERALL REACHED BENEFICIARIES



## GAPS AND CHALLENGES

- Widespread insecurity, challenging physical access and rigorous bureaucratic procedures and approval limit provision of adequate and regular humanitarian assistance especially to those who live in besieged and hard-to-reach areas;
- Absence of age and gender disaggregated information of population in need unable the sector to accommodate and target specific needs;
- Logistical constraints especially during inter-agency convoy such as, road blockage, presence of checkpoints, and presence of threats continue to hamper rapid distribution;
- Lack of actual data on distribution recipients prevent the sector to better measure the actual reached and served beneficiaries;
- Limited and irregular monitoring of distribution due to insecurity and sensitivities compromise the ability of the sector to assess the impact of its assistance and better inform future planning;
- Absence of clear and effective feedback mechanism from population in need due to information gathering sensitivities unable the sector to better determine the efficacy of its effort;
- Lack of income generating activities to provide the necessary financial means continues to hamper access to basic household items among the most vulnerable population in need;
- Diminishing active participation among sector members affects coordination and the overall sectorial reach;
- Inexact coordination structure impacts the level of efficiency in coordinating sectorial response for interagency convoys.
- Lack of reliable consolidated information for interagency convoy reach affects the sector's ability to determine the extent and impact of its convoy contribution;
- Insufficient number of detailed and comprehensive assessment makes it difficult for the sector to shift its response priorities from distribution of basic essential NFI items to provision of supplementary items.

**CRISIS BACKGROUND:** *The crisis in the Syrian Arab Republic that started in March 2011 has transformed into a complex emergency that led to 6.3 million IDPs and 4.8 million Syrian refugees. The 2017 Humanitarian Needs Overview reported that around 13.5 million people are in need of humanitarian assistance of which around 5.8 million people need to receive essential household items and other multi-sectorial assistance as they continue to live in an unsafe and uncertain environment. The degree of resilience and positive coping mechanism of the affected population have gradually reduced due to the protracted nature of the conflict. Purchasing power and the ability to provide for their basic household needs have decreased due to economic recession that left many people unemployed and the prospect of accessing essential household items has also declined due to closure of essential service providers.*



## PARTNER IN FOCUS

UNICEF was established by the United Nations General Assembly on 11 December 1946 and became a permanent part of the United Nations system in 1953 to advocate for the protection of children's rights, to help meet their basic needs and to expand their opportunities to reach their full potential. Working with other UN agencies, governmental and non-governmental organizations, UNICEF operates in over 190 countries and territories defending the right of children as mandated by the Convention on the Rights of the Child (CRC).

UNICEF opened its office in Syria in 1970. Since the conflict began in 2011, it has significantly scaled up its operations to meet rapidly expanding needs. UNICEF delivers lifesaving humanitarian assistance for women and children in health and nutrition, water, sanitation and hygiene, child protection, education, and adolescent development programmes. UNICEF is investing in longer-term systems strengthening and resilience-building initiatives to help children, families and communities focusing on the most vulnerable. UNICEF has over 200 staff in Damascus and its five field offices in Rural Damascus, Aleppo, Homs, Tartous and Qamishli. UNICEF also provides its assistance through cross-border operations from Amman and Gaziantep.

UNICEF implements a programme of distribution of winter kits and blankets to conflict affected families and children with a focus on reaching the most vulnerable (including internally displaced families, female headed households, and children with disabilities) both through its regular programme, humanitarian convoys and cross-border deliveries. Given the economic downturn, UNICEF is supporting local economies and job creation through local procurement of winter related emergency supplies, clothes and blankets. This includes working directly with small scale workshops and cooperatives. In 2016, UNICEF reached more than 700,000 children with clothing kits and blankets, including more than 119,000 children living in hard to reach and besieged areas.

An e-voucher programme has been introduced in 2016 enabling families to purchase clothing for their children using vouchers at a network of over 30 stores in Qamishli, Homs, Tartous, Lattakia and Damascus. The e-voucher programme gives families flexibility in choosing the right items and sizes for their children. Giving families choice and the ability to shop for themselves also contributes to their empowerment and sense of dignity. The programme supports the local economy by creating demand for local suppliers.

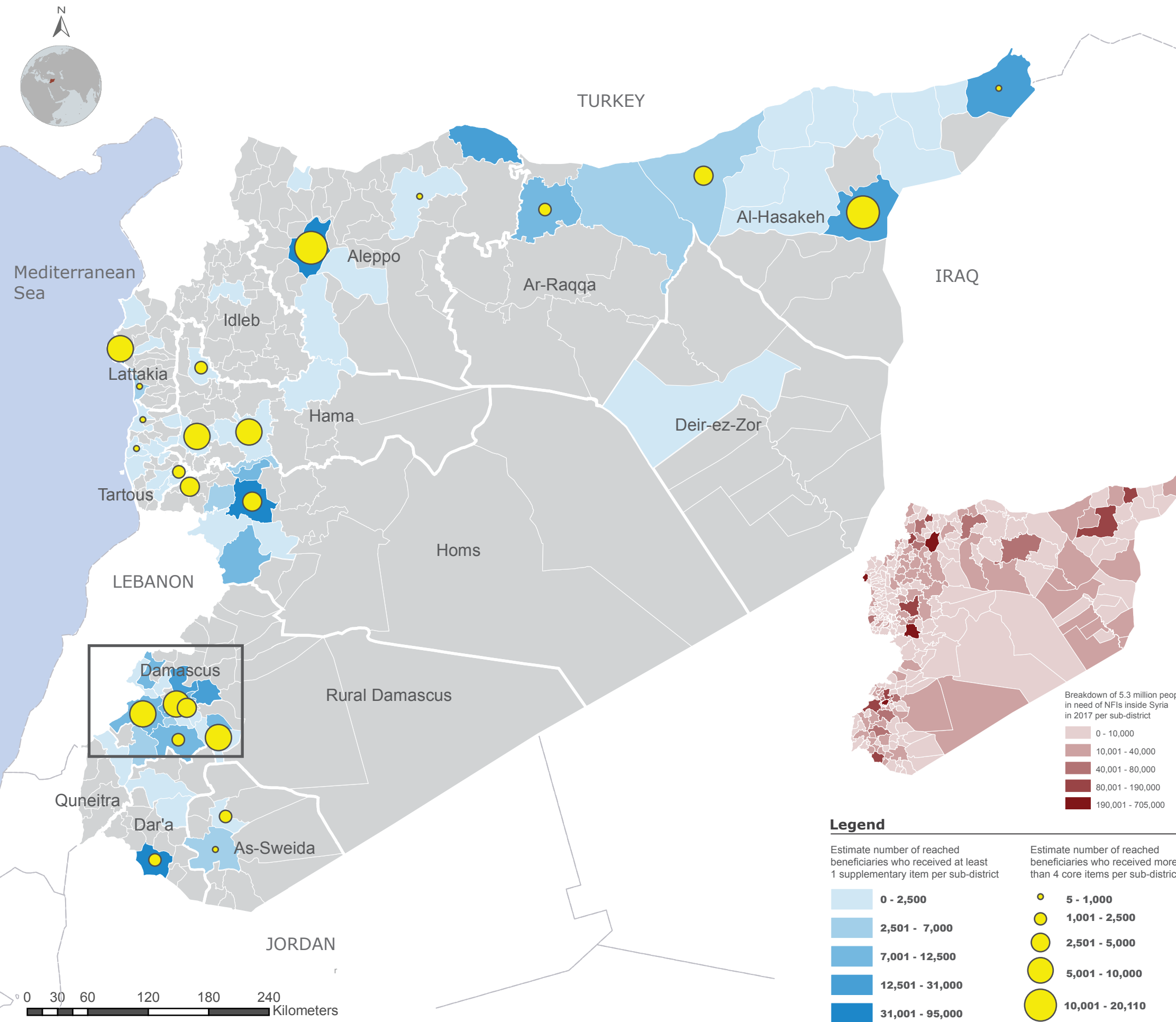
### NFI Sector Coordination Team

Joel Andersson, Senior NFI Sector Coordinator ([anderssj@unhcr.org](mailto:anderssj@unhcr.org))  
 Zina Alkhiami, NFI Sector Field Associate ([alkhiami@unhcr.org](mailto:alkhiami@unhcr.org))  
 Muhammad Shahzad, IM Officer ([shahzadm@unhcr.org](mailto:shahzadm@unhcr.org))  
 Corazon C. Lagamayo, IM Officer ([lagamayo@unhcr.org](mailto:lagamayo@unhcr.org))  
 Maha Shaban, IM Associate ([shabanm@unhcr.org](mailto:shabanm@unhcr.org))



# SYRIA: NFI RESPONSE

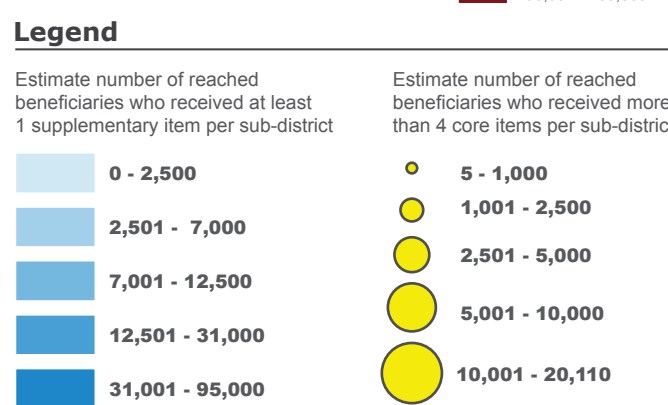
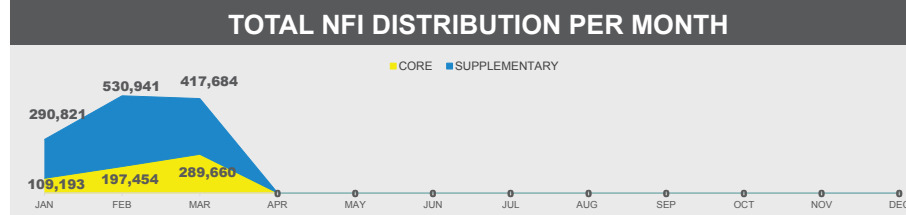
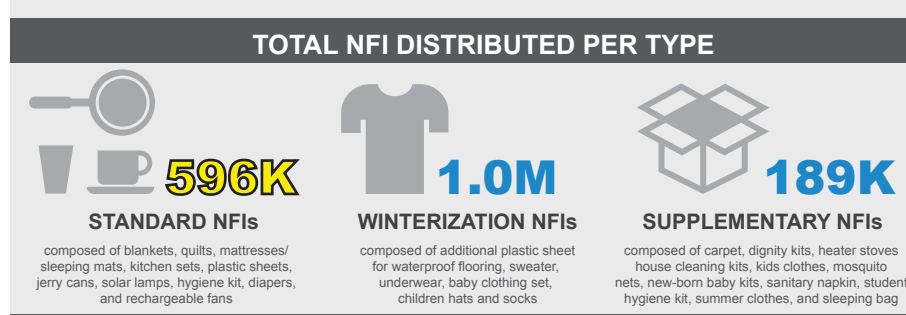
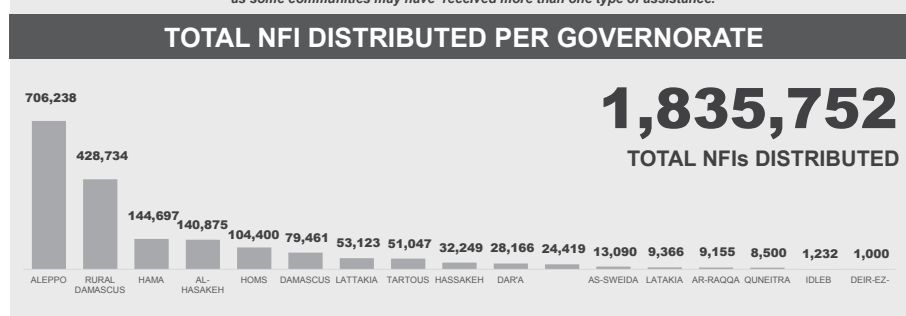
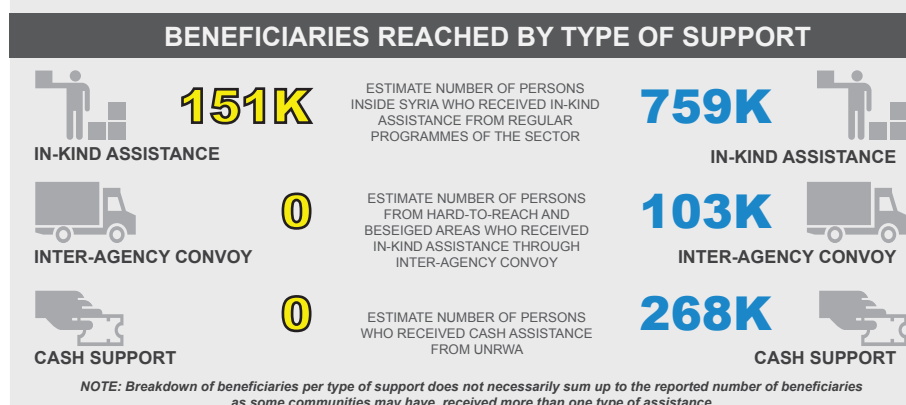
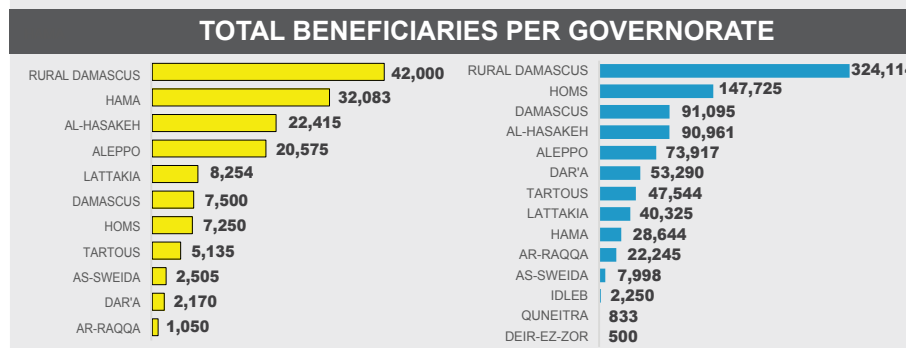
Reporting Period: March 2017



**TOTAL BENEFICIARIES REACHED**  
**2,230,955** TOTAL NUMBER OF PEOPLE WHO RECEIVED AT LEAST ONE NON-FOOD ITEM AS OF MARCH 2017

**CORE ITEMS** **150,937** PEOPLE WHOSE NEEDS WERE ADEQUATELY MET FOR RECEIVING MORE THAN 4 CORE NFI (3% OF THE 4.9M TOTAL TARGET PEOPLE IN NEED OF NFI IN SYRIA)

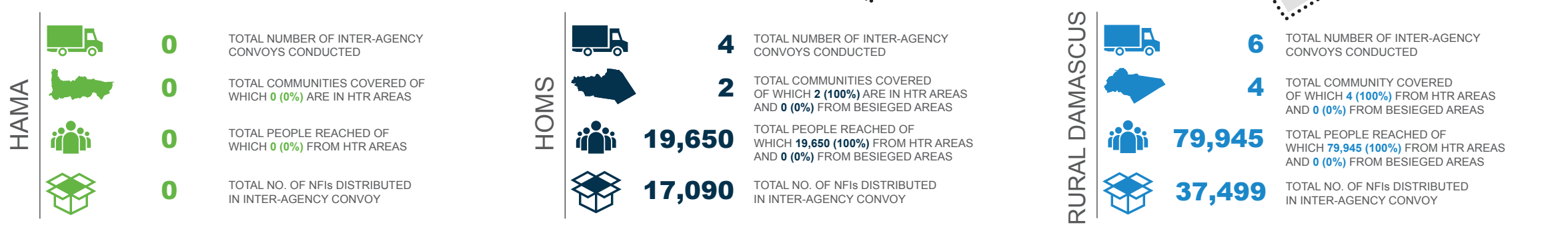
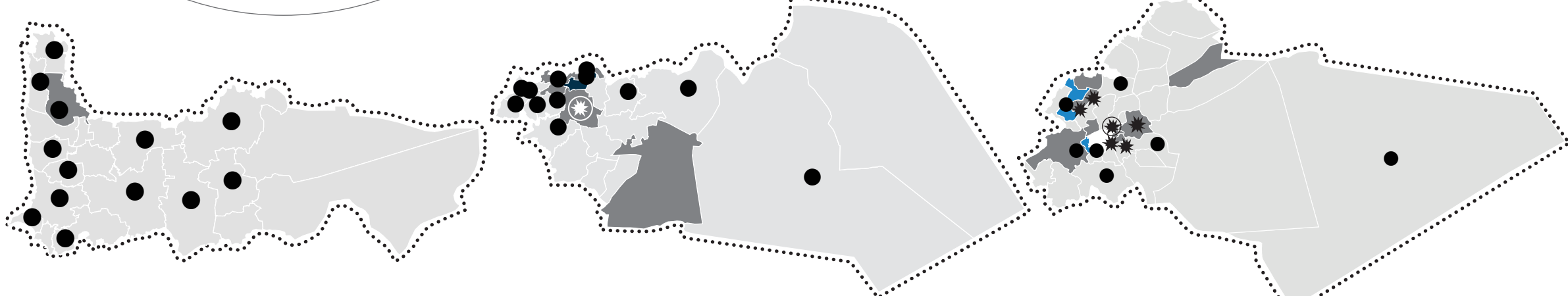
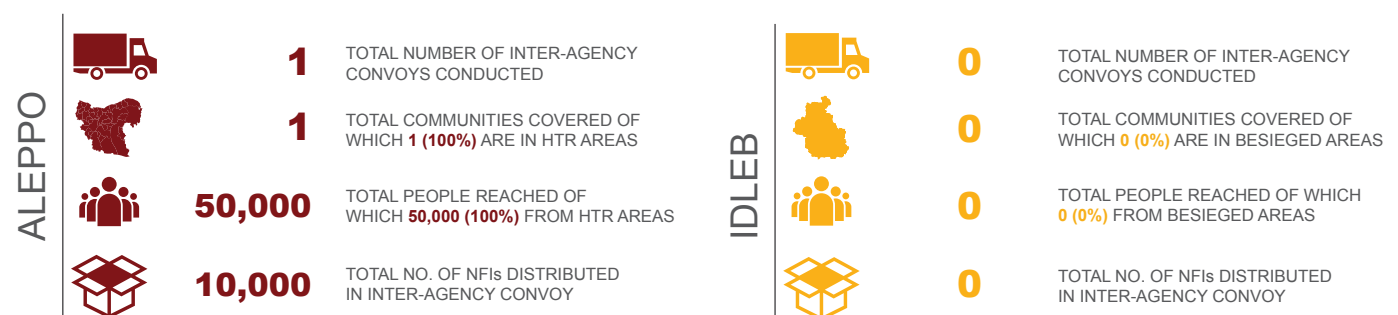
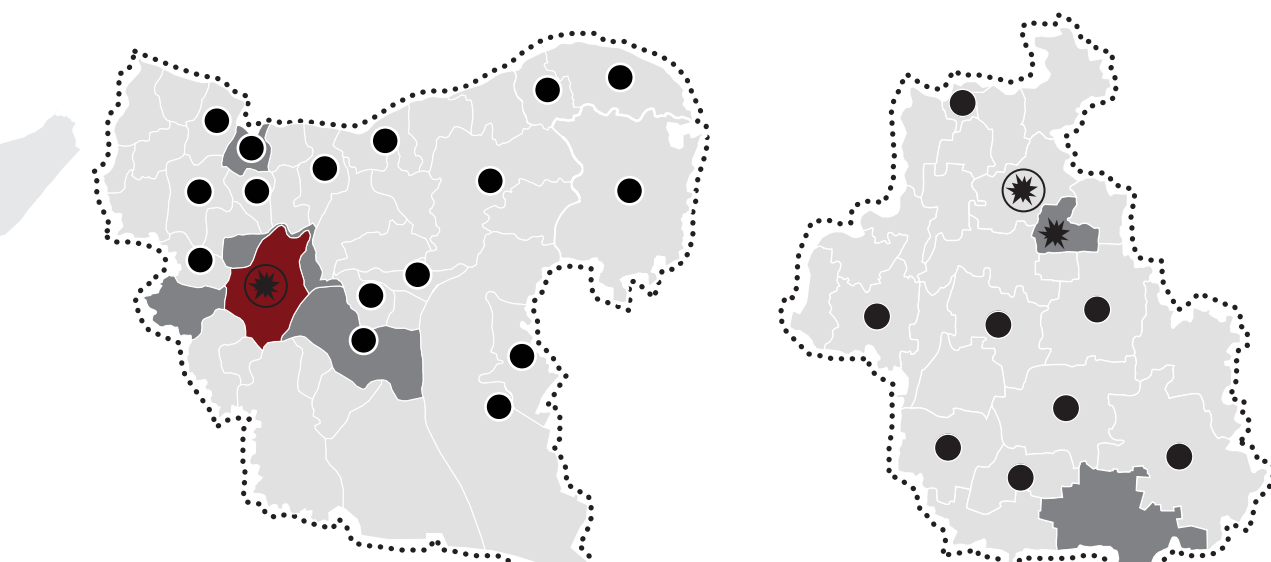
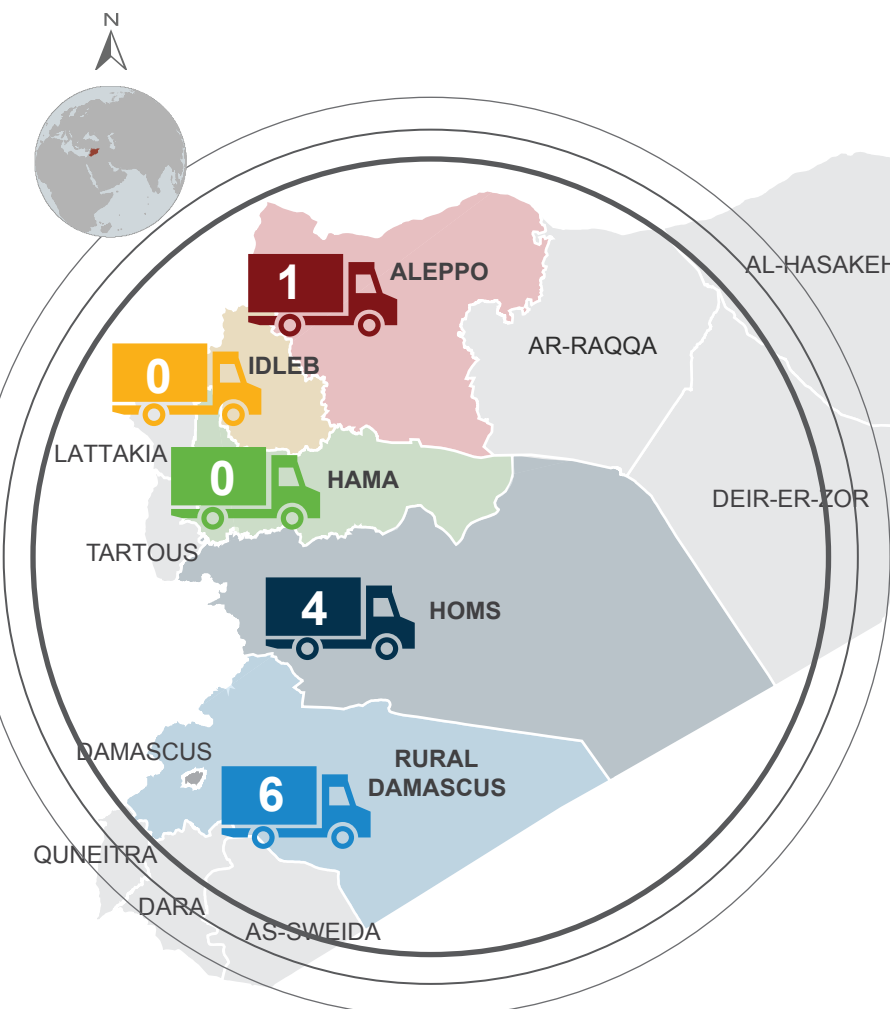
**SUPPLEMENTARY ITEMS** **931,441** PEOPLE WHO RECEIVED AT LEAST 1 SUPPLEMENTARY ITEM (113% OF THE 825,000 TOTAL TARGET PEOPLE IN NEED OF SUPPLEMENTARY NFI IN SYRIA)



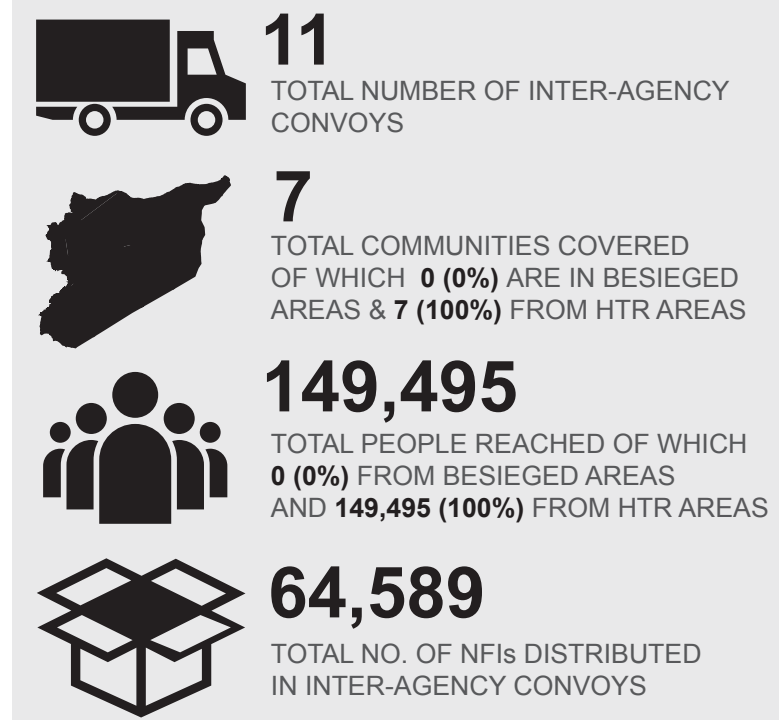


# SYRIA: INTER-AGENCY CONVOY

Reporting Period: March 2017



## SUMMARY



### NAME OF BESIEGED AND HTR COMMUNITIES COVERED BY INTER-AGENCY CONVOY (2016-2017)

GOVERNORATE	HARD-TO-REACH COMMUNITIES	BESIEGED COMMUNITIES
ALEPPO	● AFRIN ● ALEPPO CITY ● HAJEB ● NABUL ● TALL REFAAT	
IDLEB		* FOAH
HAMA	● MADIQ CASTLE	
HOMS	● AR-RASTAN ● DAR KABIRA ● HOMS CITY ● KAFR LAHA ● TALBISEH ● TALDU ● TIR MAALAH	
RURAL DAMASCUS	● BLUDAN ● JIRUD ● MADAMIYET ELSHAM ● QUDSIYA ● RAWDA BATRONEH ● SARGHAYA ● SUQ WADI BARD	* ARBIN * AZ-ZABADANI * BEIT SAWA * DARRAYA * DUMA * EIN TERMA * HAMMURA * HARASTA * HEZZEH * JISREIN * KAFR BATNA * KHAN ELSHIH * MADAYA * SAGBA

### LEGEND

- No. of inter-agency convoys (IACs)
- No. of beneficiaries (persons) reached by IACs
- Sub-districts with besieged communities
- Sub-districts with (HTR) hard-to-reach communities
- Sub-districts with besieged and HTR communities
- No. of distributed non-food items
- Areas covered by convoy in 2016

FOOTNOTE/S:

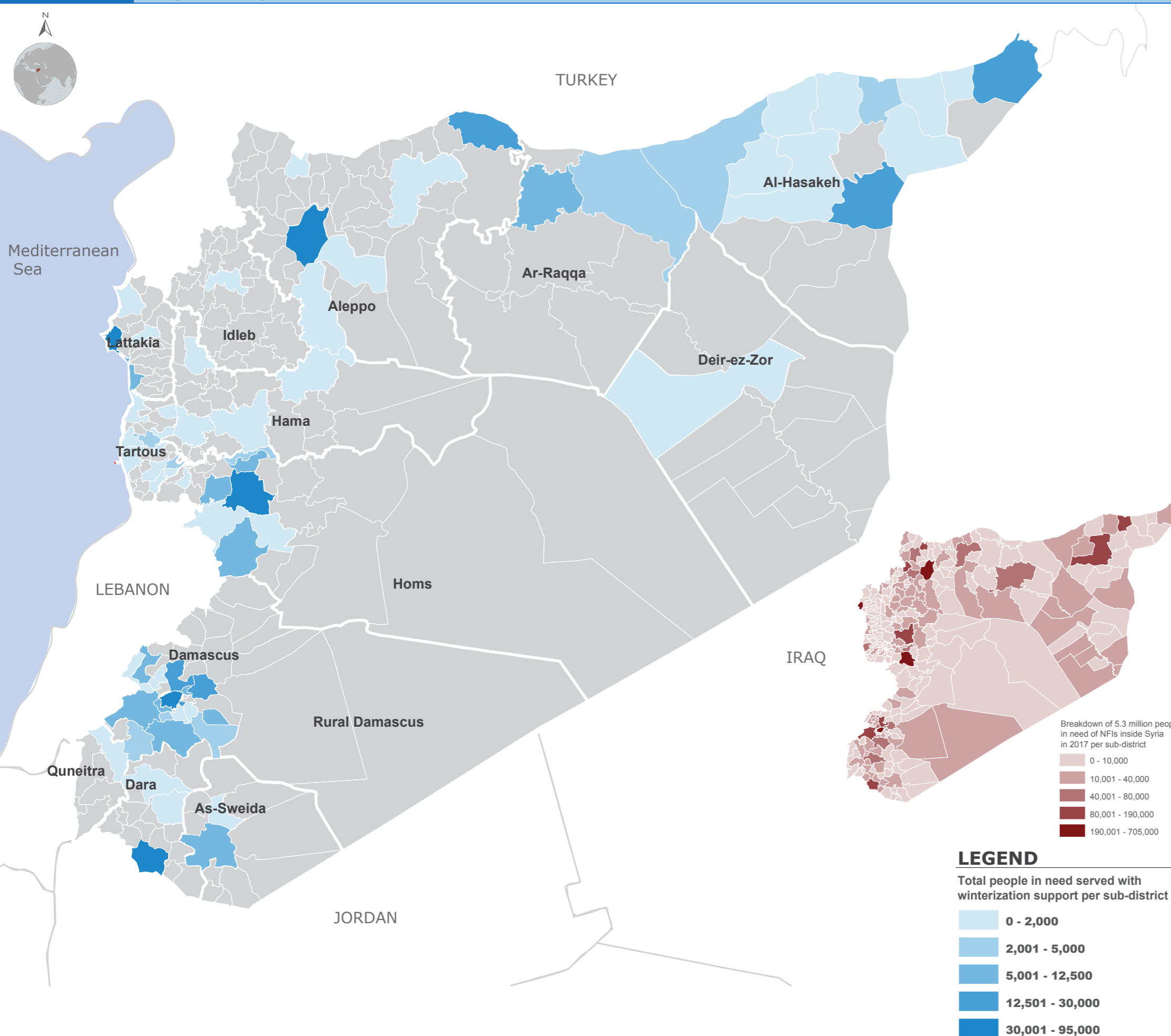
A. The information presented here only shows DRC, IOM, UNHCR and UNICEF convoys.

B. One convoy is counted as one completed trip.



# SYRIA: NFI WINTERIZATION SUPPORT

Reporting Period: March 2017



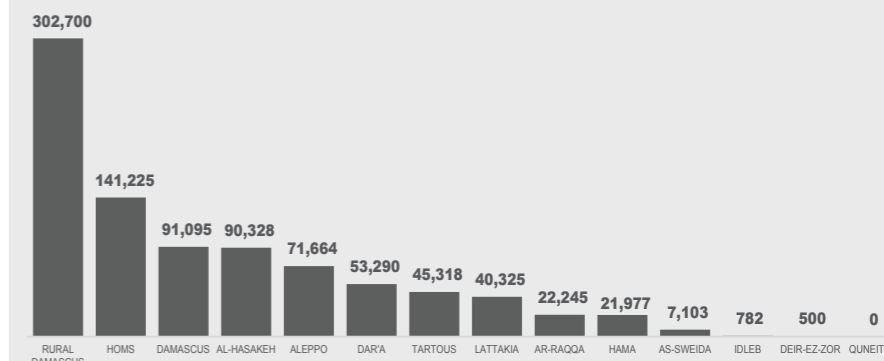
## SUMMARY



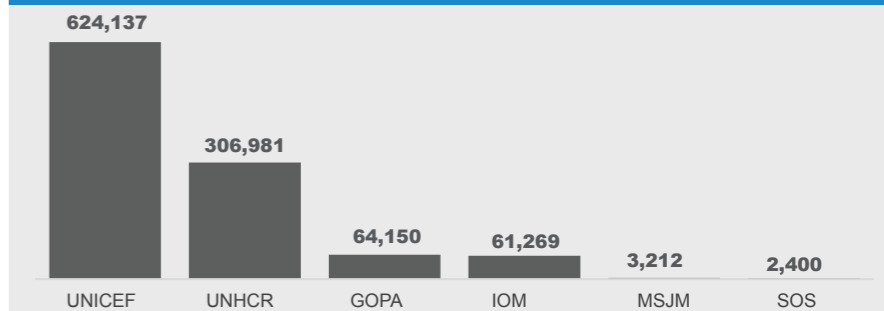
# 888,551

PEOPLE IN NEED WHO RECEIVED WINTERIZATION SUPPORT IN 2017

## BREAKDOWN OF BENEFICIARIES PER GOVERNORATE



## BREAKDOWN OF BENEFICIARIES PER AGENCY



## QUANTITY OF WINTER ITEMS PER TYPE

# 1,050,452

ESTIMATE NUMBER OF WINTER ITEMS DISTRIBUTED



ESTIMATE QUANTITY OF WINTER CLOTHING KITS\*

**248,443**



ESTIMATE QUANTITY OF PLASTIC SHEET \ WATER PROOF FLOORING

**28,602**



ESTIMATE QUANTITY OF OTHER ITEMS

**773,407**

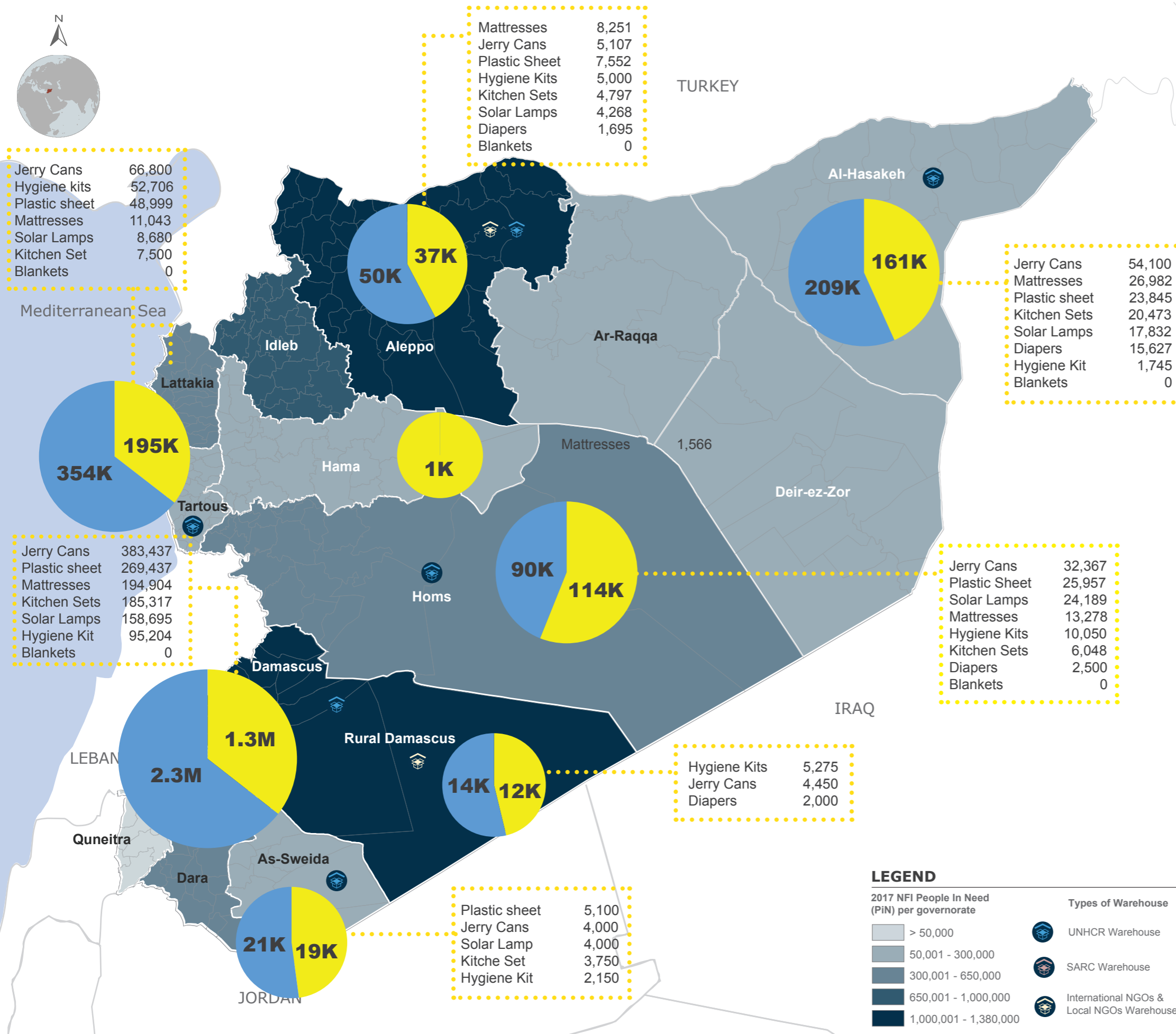
\*NOTE: Content of winterization kit per agency varies.

IOM (cotton underwear long sleeve with long pants, wool gloves, wool hats, wool scarves, wool socks)  
UNHCR (sweater, underwear, baby clothing set, high thermal blanket, plastic sheet, sleeping bag, jackets)  
UNICEF (children winter clothes)



# SYRIA: NFI STOCKPILE

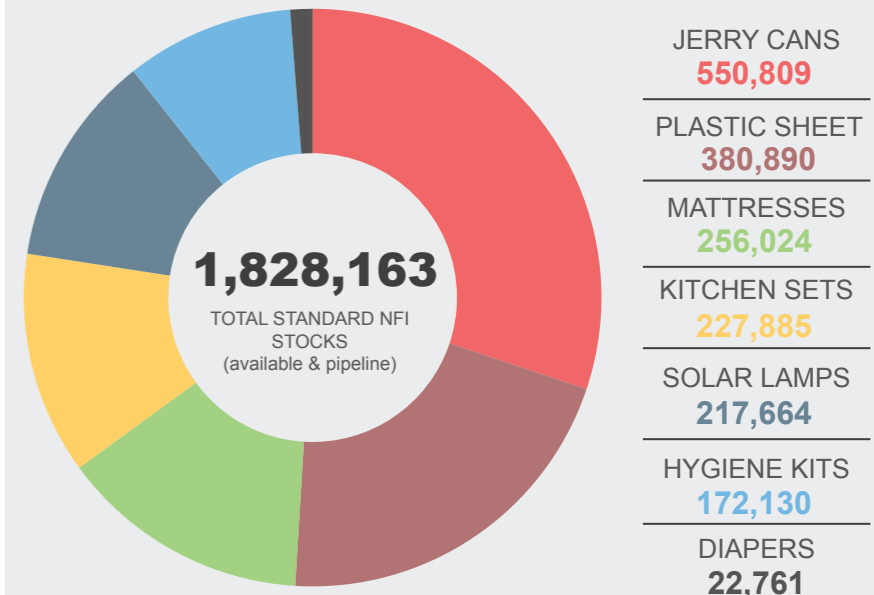
Reporting Period: March 2017



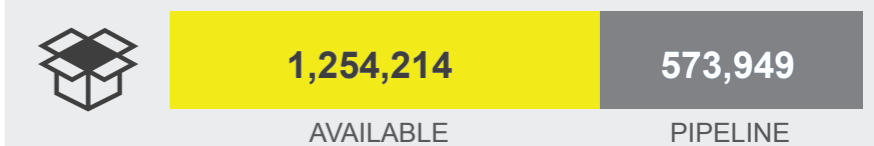
**4,898,222** TOTAL STANDARD AND SUPPLEMENTARY NFI STOCKS AS OF MARCH 2017

## CORE NON-FOOD ITEMS

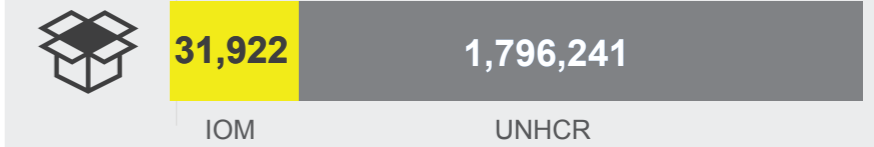
### BREAKDOWN OF STANDARD NFI STOCKS PER TYPE



### BREAKDOWN OF CORE NFI STOCKS PER STATUS



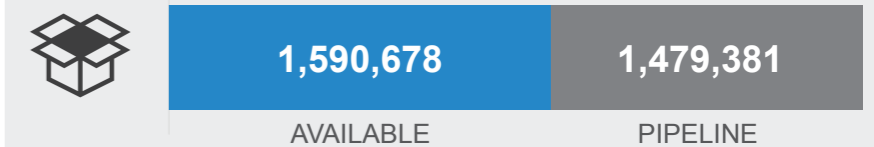
### BREAKDOWN OF STANDARD NFI STOCKS PER AGENCY



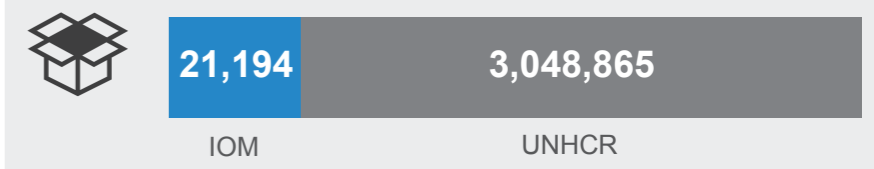
## SUPPLEMENTARY NON-FOOD ITEMS

**3,070,059** TOTAL SUPPLEMENTARY NFI (available and pipeline)

### BREAKDOWN OF SUPPLEMENTARY NFI STOCKS PER STATUS



### BREAKDOWN OF SUPPLEMENTARY NFI STOCKS PER AGENCY

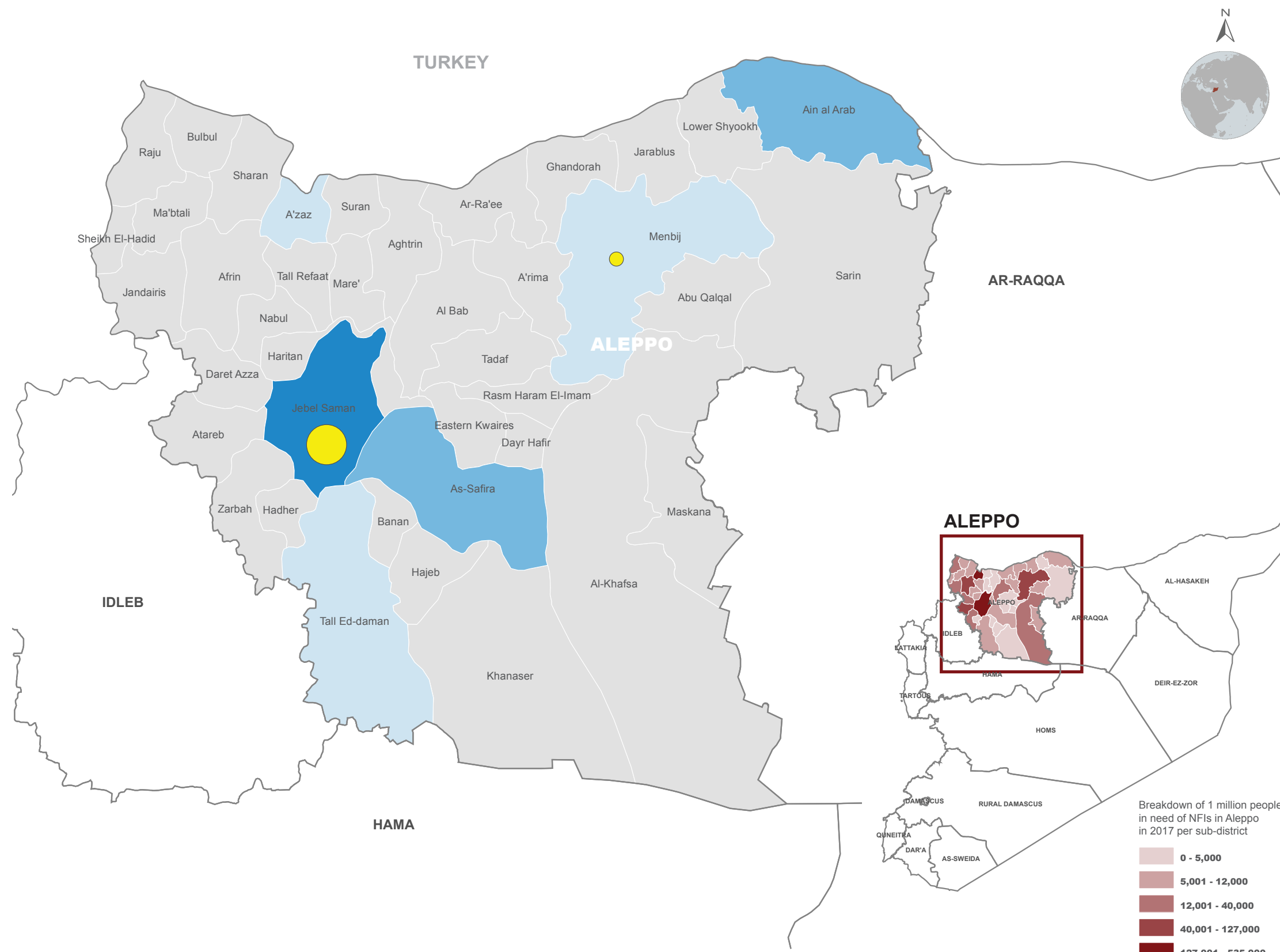


# FIELD MAPS



# ALEPPO, SYRIA: NFI RESPONSE

Reporting Period: March 2017



## TOTAL BENEFICIARIES REACHED

# 692,595

TOTAL NUMBER OF PEOPLE WHO RECEIVED AT LEAST ONE NFI AS OF MARCH 2017

## CORE ITEMS SUPPLEMENTARY ITEMS

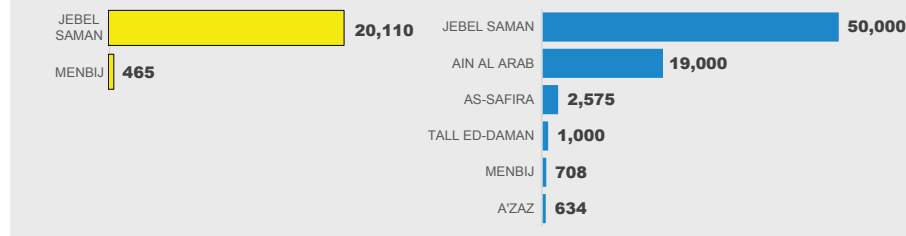
# 20,575

# 73,283

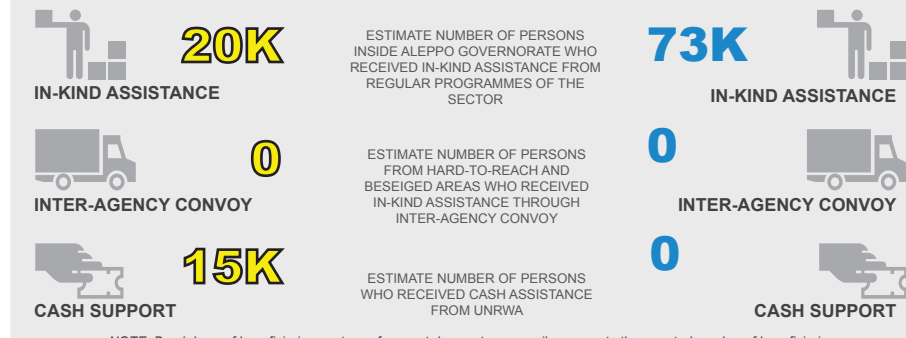
PEOPLE WHOSE NEEDS WERE ADEQUATELY MET FOR RECEIVING MORE THAN 4 CORE NFI ITEMS (2% OF THE 1.0M PEOPLE IN NEED IN ALEPPO GOVERNORATE)

PEOPLE WHO RECEIVED AT LEAST 1 SUPPLEMENTARY ITEM WHICH INCLUDES SEASONAL ITEMS (7% OF THE 1.0M PEOPLE IN NEED IN ALEPPO GOVERNORATE)

## TOTAL BENEFICIARIES PER SUB-DISTRICT



## BENEFICIARIES REACHED BY TYPE OF SUPPORT



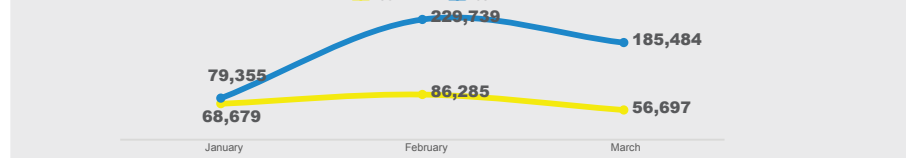
## TOTAL NFI DISTRIBUTED PER SUB-DISTRICT



## TOTAL NFI DISTRIBUTED PER TYPE



## TOTAL NFI DISTRIBUTION PER MONTH

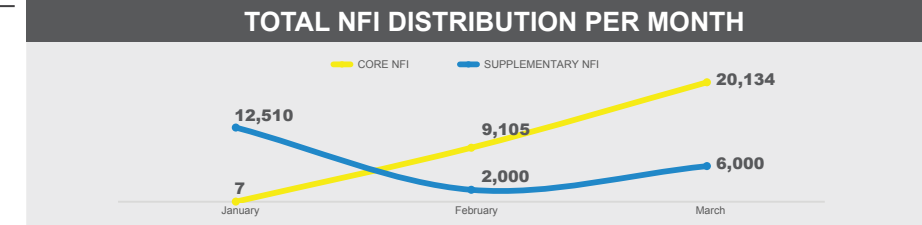
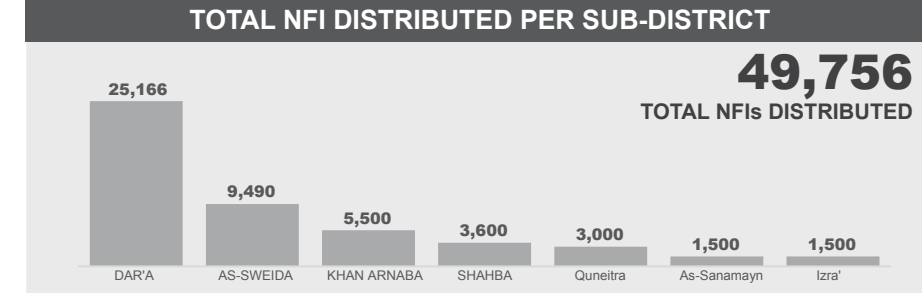
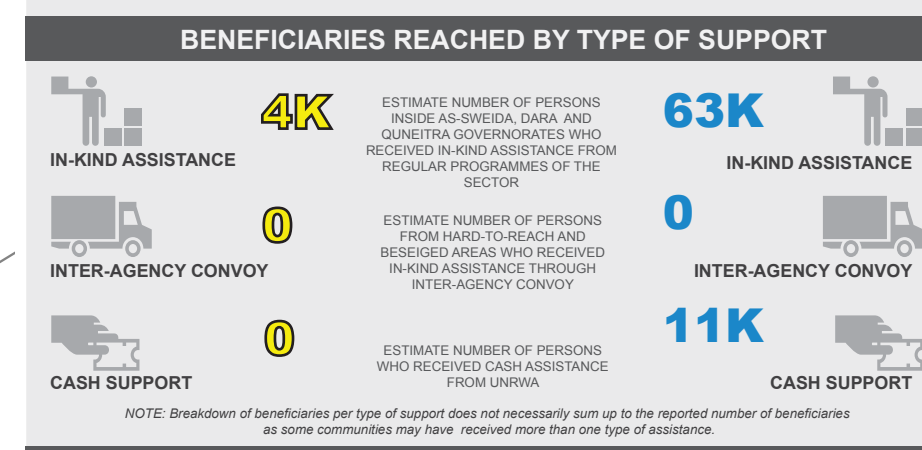
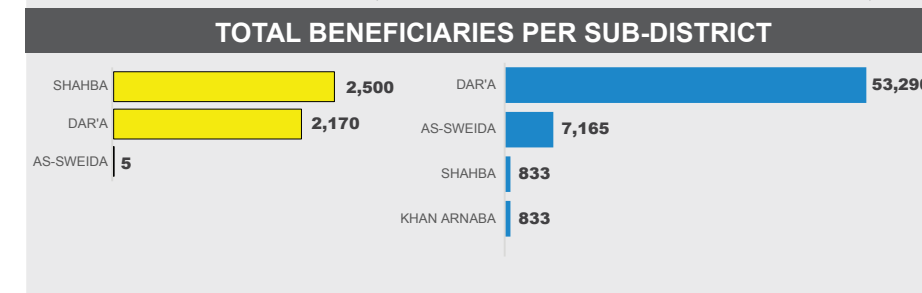
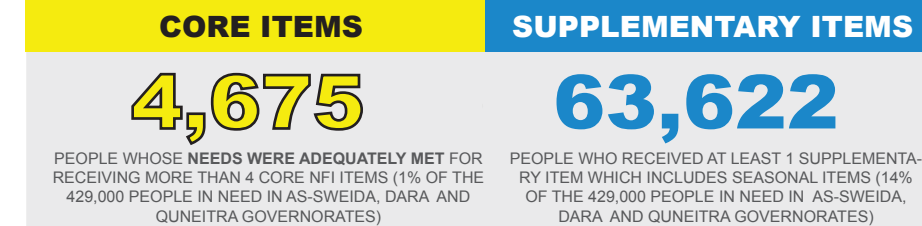
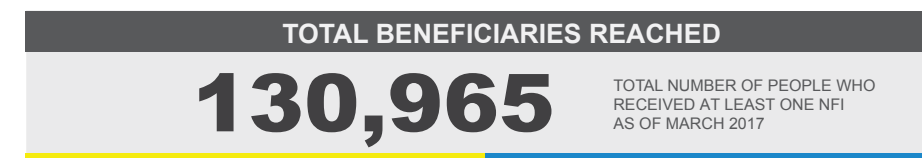
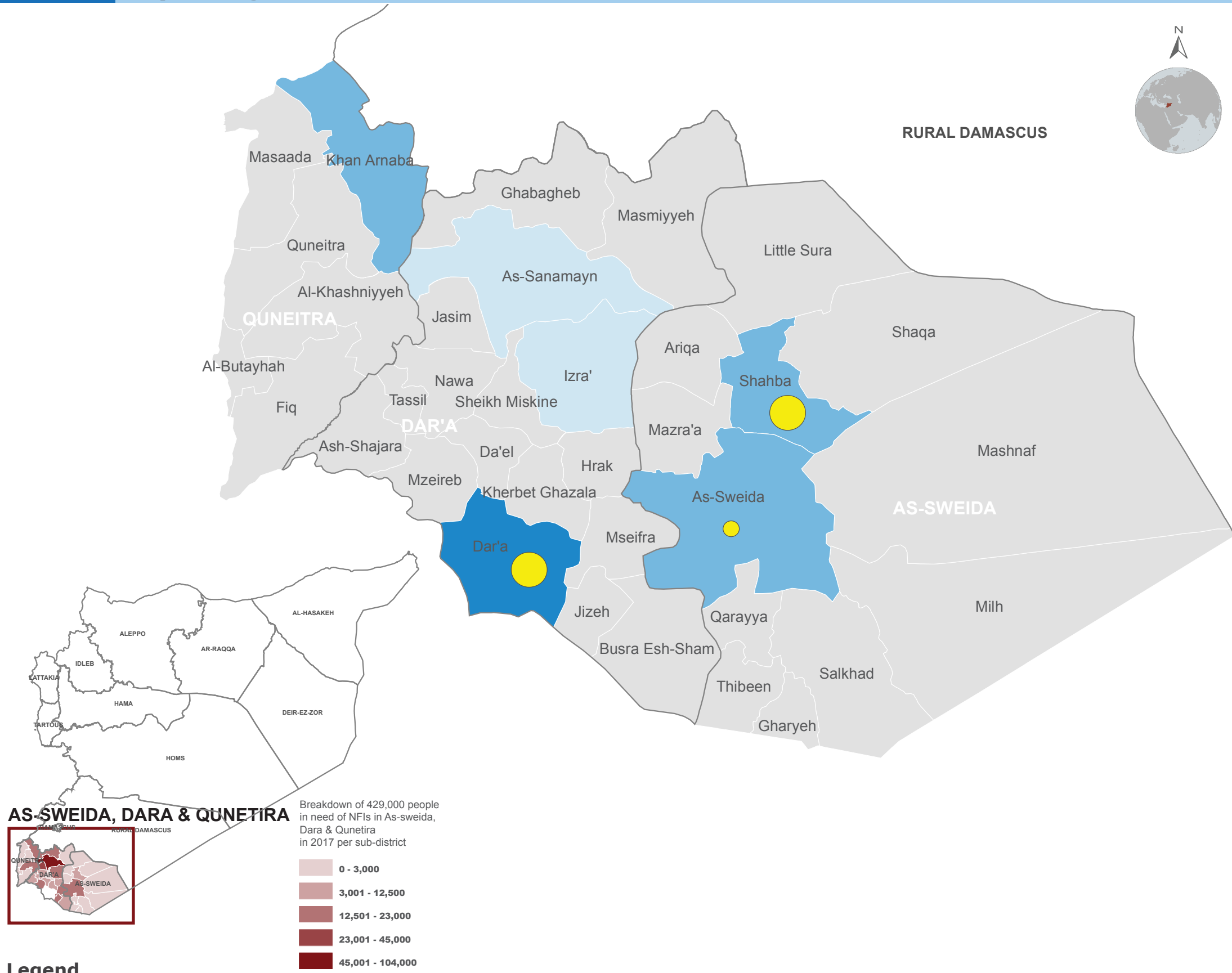






# AS-SWEIDA, DARA & QUNEITRA, SYRIA: NFI RESPONSE

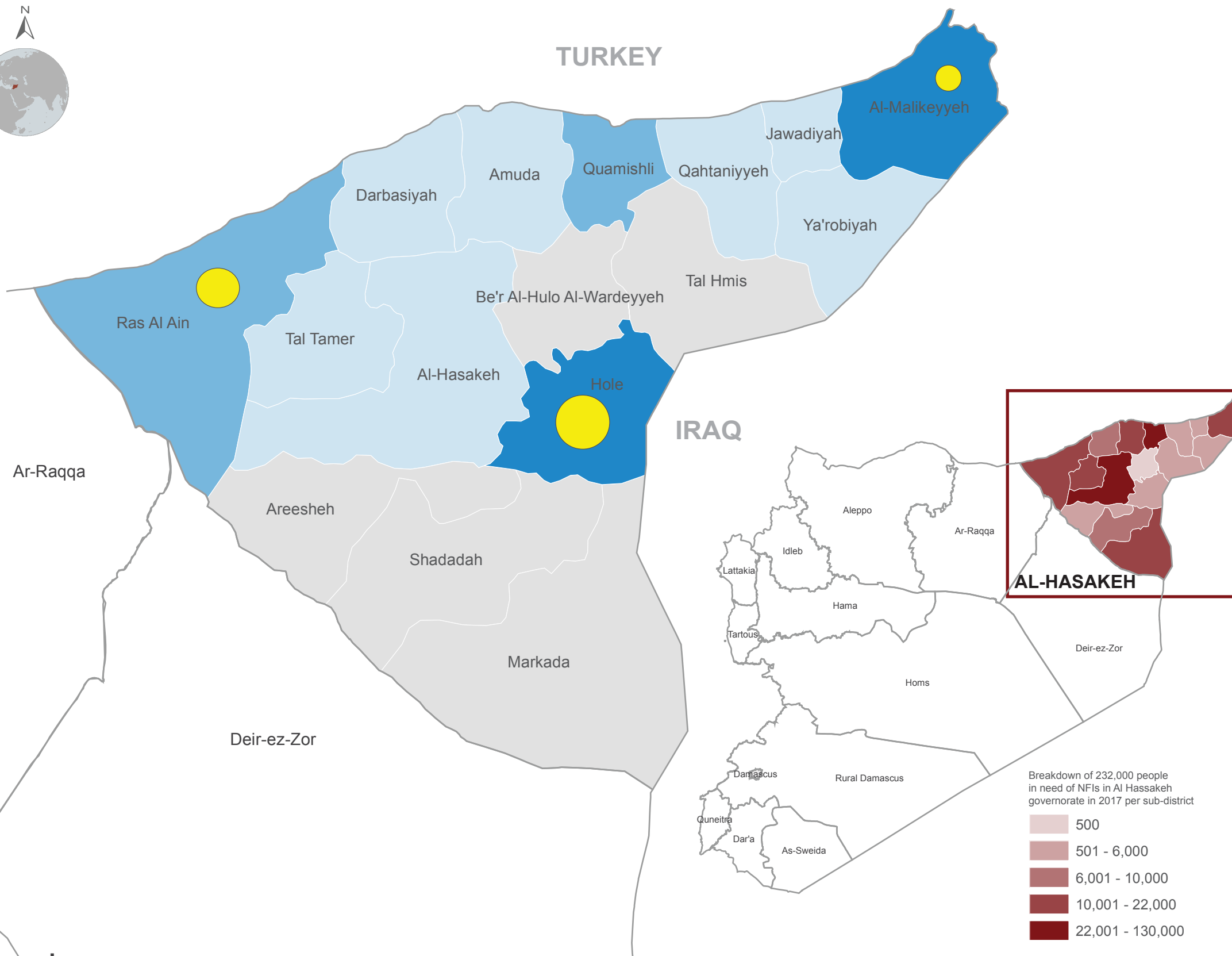
Reporting Period: March 2017





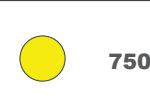
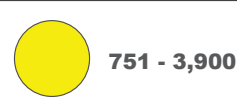
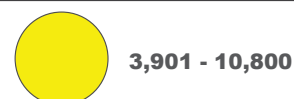
# AI-HASSAKEH, SYRIA: NFI RESPONSE

Reporting Period: March 2017



## Legend

Estimate number of reached beneficiaries who received more than 4 core items per sub-district



Estimate number of reached beneficiaries who received at least 1 supplementary item per sub-district



## TOTAL BENEFICIARIES REACHED

# 148,209

TOTAL NUMBER OF PEOPLE WHO RECEIVED AT LEAST ONE NFI AS OF MARCH 2017

### CORE ITEMS

# 22,415

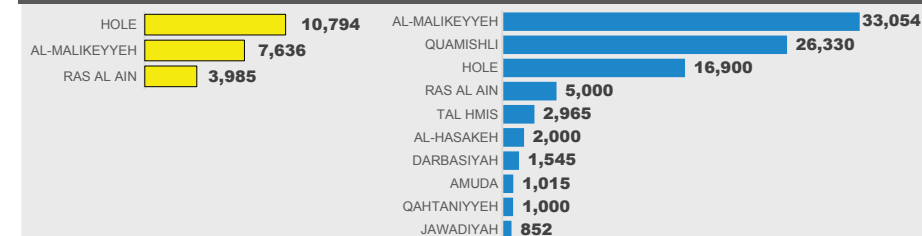
PEOPLE WHOSE NEEDS WERE ADEQUATELY MET FOR RECEIVING MORE THAN 4 CORE NFI ITEMS (9% OF THE 232,000 PEOPLE IN NEED IN AL-HASSAKEH GOVERNORATE)

### SUPPLEMENTARY ITEMS

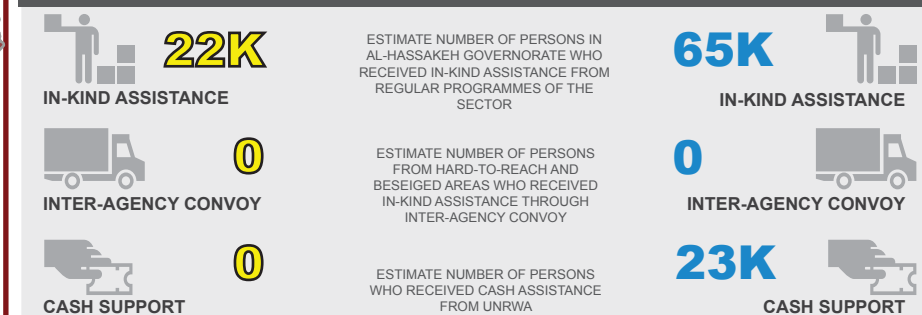
# 67,913

PEOPLE WHO RECEIVED AT LEAST 1 SUPPLEMENTARY ITEM WHICH INCLUDES SEASONAL ITEMS (29% OF THE 232,000 PEOPLE IN NEED IN AL-HASSAKEH GOVERNORATE)

## TOTAL BENEFICIARIES PER SUB-DISTRICT

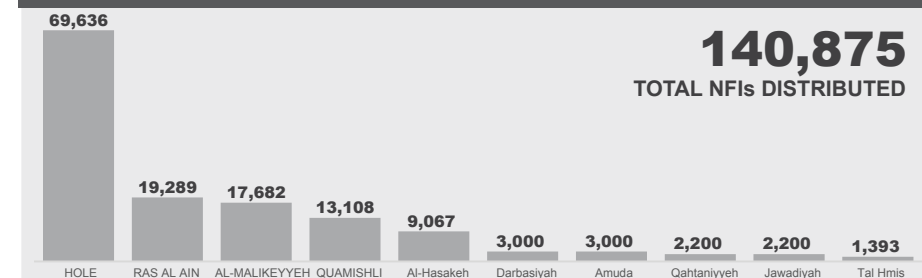


## BENEFICIARIES REACHED BY TYPE OF SUPPORT



NOTE: Breakdown of beneficiaries per type of support does not necessarily sum up to the reported number of beneficiaries as some communities may have received more than one type of assistance.

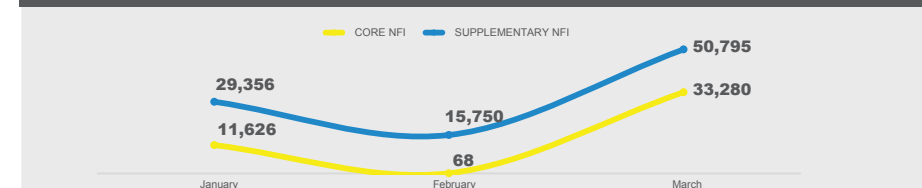
## TOTAL NFI DISTRIBUTED PER SUB-DISTRICT



## TOTAL NFI DISTRIBUTED PER TYPE



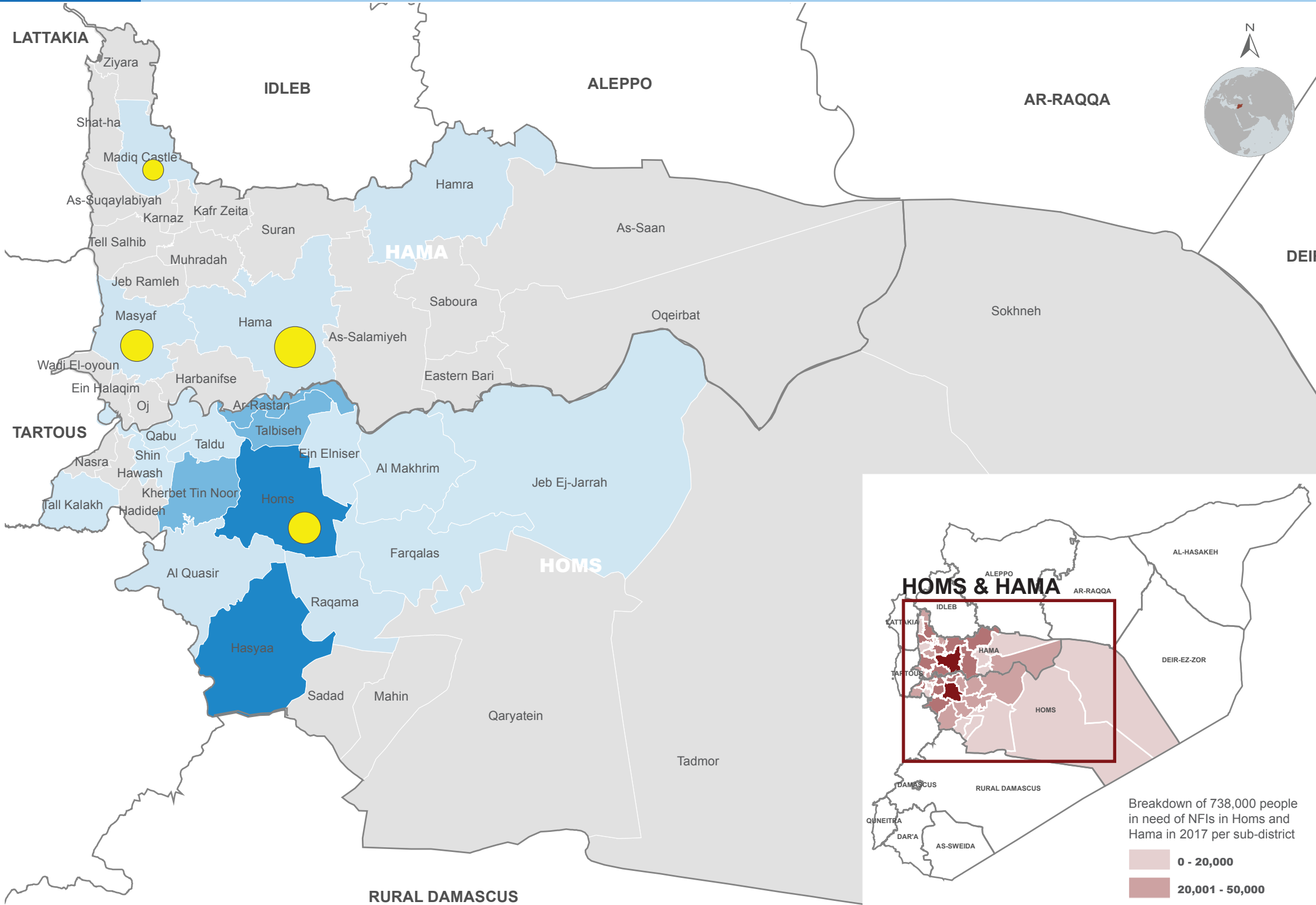
## TOTAL NFI DISTRIBUTION PER MONTH





# HAMA & HOMS, SYRIA: NFI RESPONSE

Reporting Period: March 2017



## Legend

Estimate number of reached beneficiaries who received more than 4 core items per sub-district



4,001 - 8,400



1,751 - 4,000



1,750

Estimate number of reached beneficiaries who received at least 1 supplementary item per sub-district



8,501 - 95,000



3,501 - 8,500



0 - 3,500

## TOTAL BENEFICIARIES REACHED

# 366,270

TOTAL NUMBER OF PEOPLE WHO RECEIVED AT LEAST ONE NFI AS OF MARCH 2017

## CORE ITEMS

# 39,333

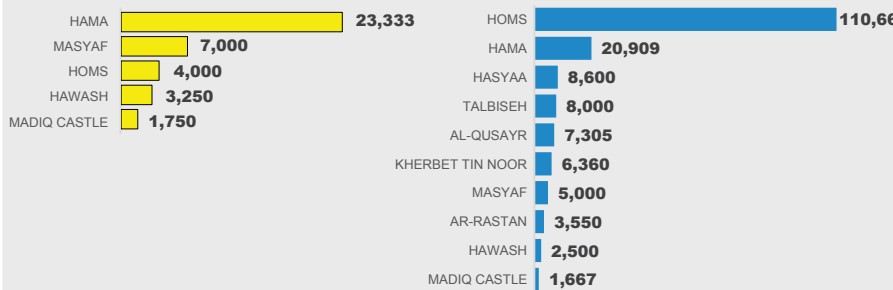
PEOPLE WHOSE NEEDS WERE ADEQUATELY MET FOR RECEIVING MORE THAN 4 CORE NFI ITEMS (5% OF THE 738,000 PEOPLE IN NEED IN HOMS AND HAMA GOVERNORATES)

## SUPPLEMENTARY ITEMS

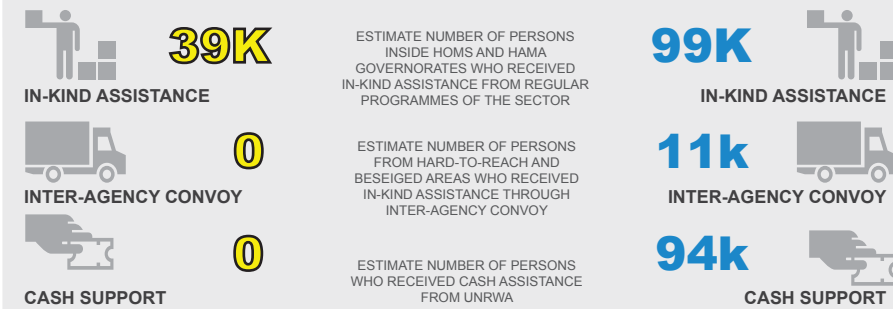
# 174,551

PEOPLE WHO RECEIVED AT LEAST 1 SUPPLEMENTARY ITEM WHICH INCLUDES SEASONAL ITEMS (23% OF THE 738,000 PEOPLE IN NEED IN HOMS AND HAMA GOVERNORATES)

## TOTAL BENEFICIARIES PER SUB-DISTRICT



## BENEFICIARIES REACHED BY TYPE OF SUPPORT



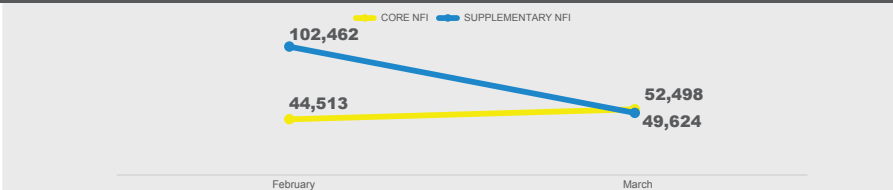
## TOTAL NFI DISTRIBUTED PER SUB-DISTRICT



## TOTAL NFI DISTRIBUTED PER TYPE



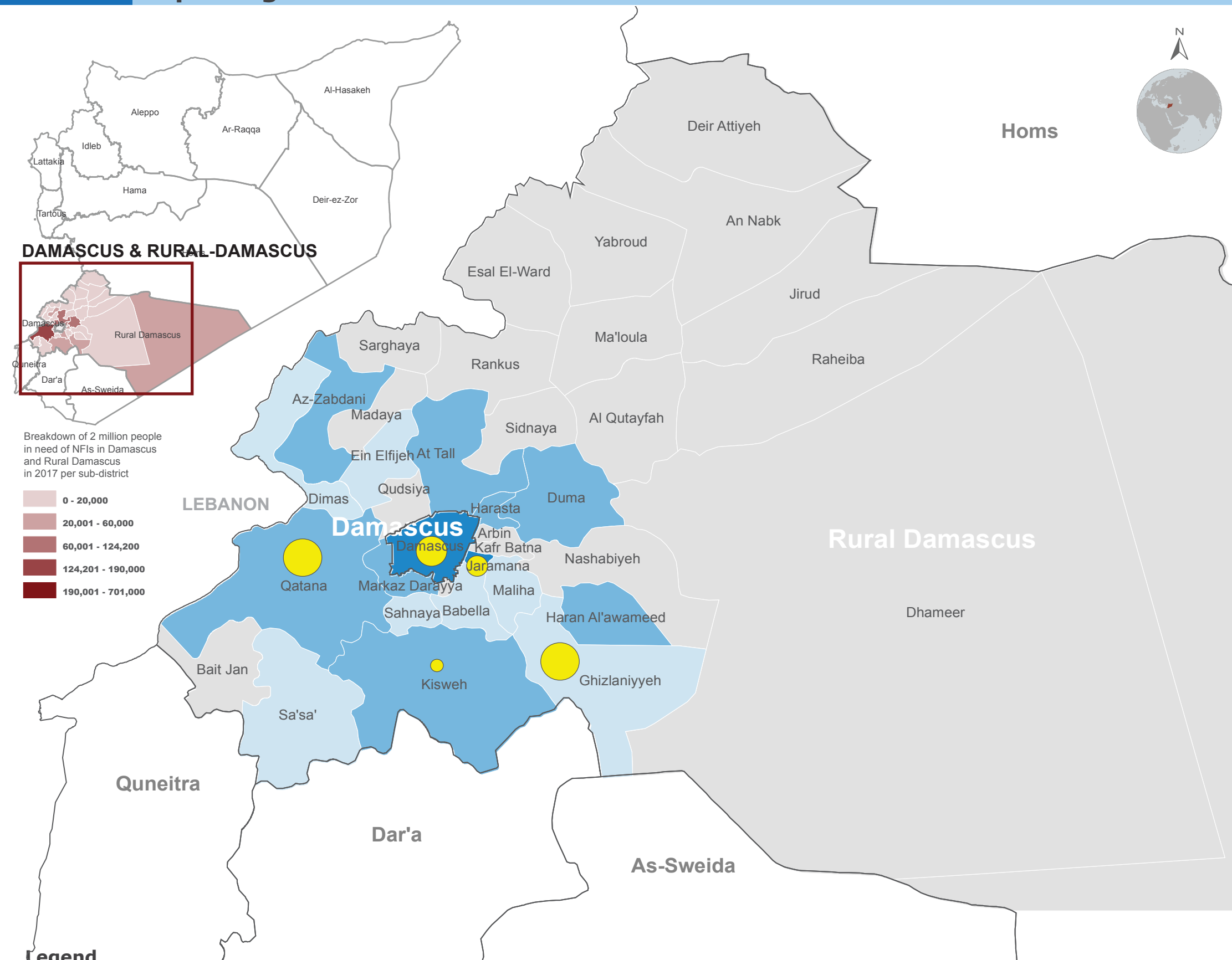
## TOTAL NFI DISTRIBUTION PER MONTH





# DAMASCUS & RURAL DAMASCUS, SYRIA: NFI RESPONSE

Reporting Period: March 2017



## TOTAL BENEFICIARIES REACHED

# 611,031

TOTAL NUMBER OF PEOPLE WHO RECEIVED AT LEAST ONE NFI AS OF MARCH 2017

## CORE ITEMS SUPPLEMENTARY ITEMS

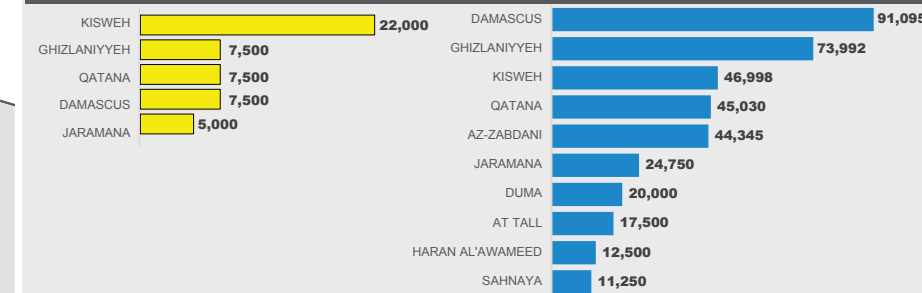
# 49,500

# 360,974

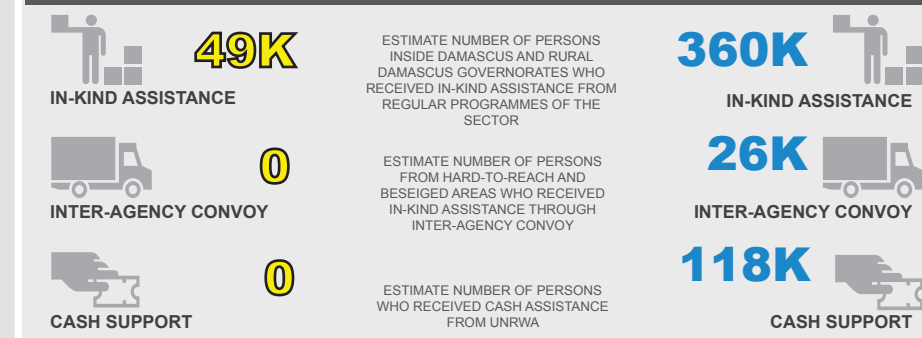
PEOPLE WHOSE NEEDS WERE ADEQUATELY MET FOR RECEIVING MORE THAN 4 CORE NFI ITEMS (2% OF THE 2.0M PEOPLE IN NEED IN DAMASCUS AND RURAL DAMASCUS GOVERNORATES)

PEOPLE WHO RECEIVED AT LEAST 1 SUPPLEMENTARY ITEM WHICH INCLUDES SEASONAL ITEMS (18% OF THE 2.0M PEOPLE IN NEED IN DAMASCUS AND RURAL DAMASCUS GOVERNORATES)

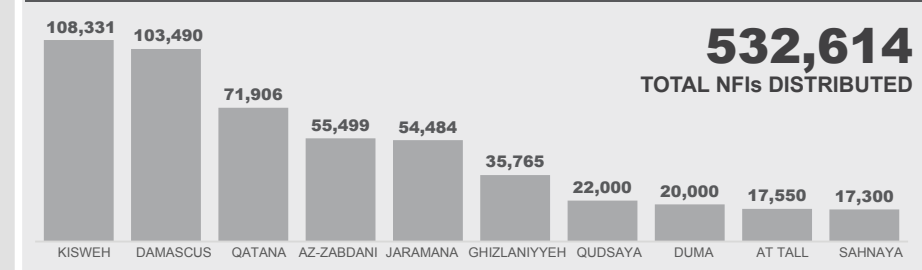
## TOTAL BENEFICIARIES PER SUB-DISTRICT (TOP 10)



## BENEFICIARIES REACHED BY TYPE OF SUPPORT



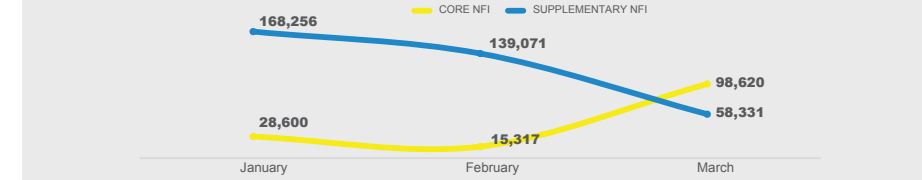
## TOTAL NFI DISTRIBUTED PER SUB-DISTRICT (TOP 10)



## TOTAL NFI DISTRIBUTED PER TYPE



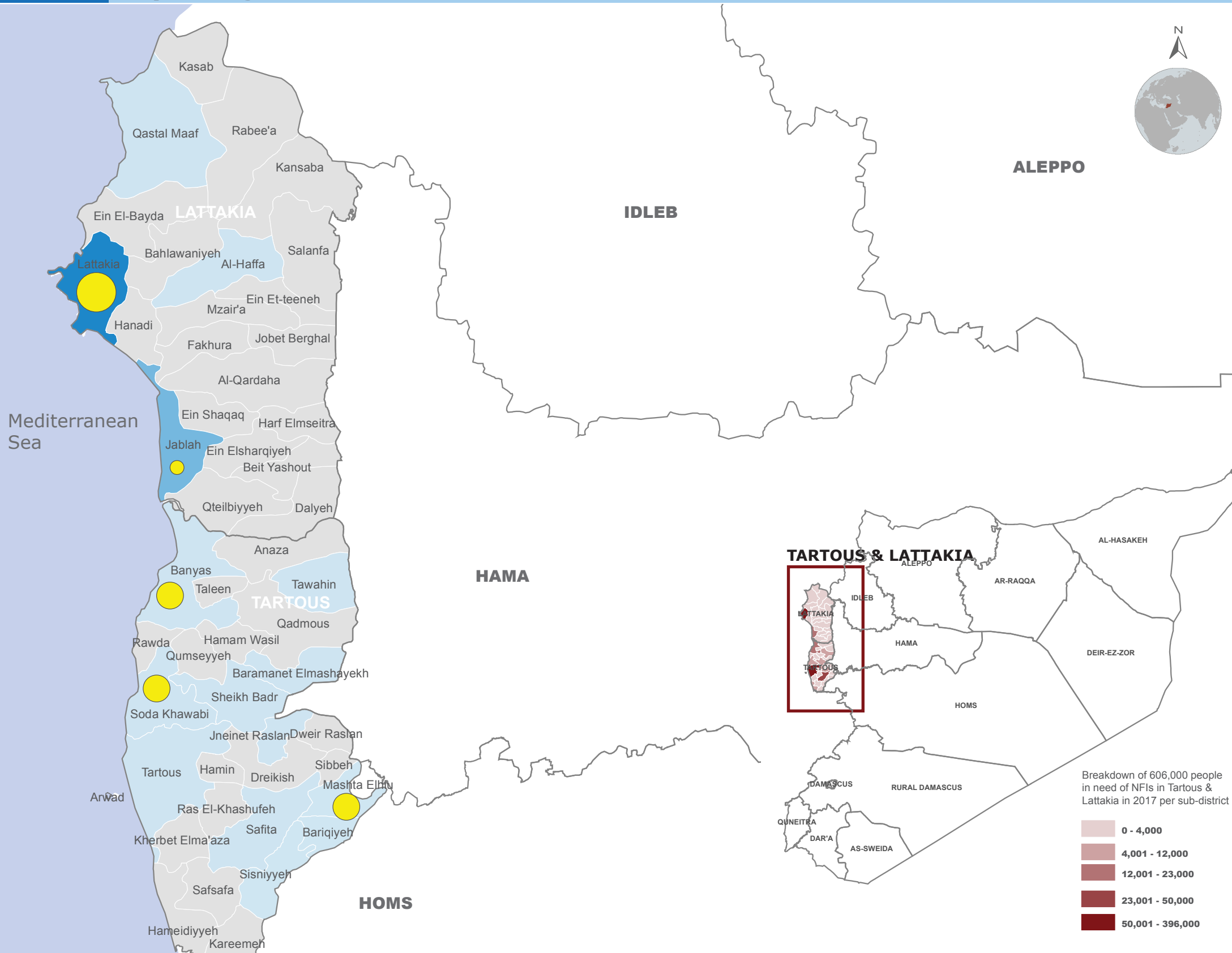
## TOTAL NFI DISTRIBUTION PER MONTH





# TARTOUS & LATTAKIA, SYRIA: NFI RESPONSE

Reporting Period: March 2017



## TOTAL BENEFICIARIES REACHED

# 159,662

TOTAL NUMBER OF PEOPLE WHO RECEIVED AT LEAST ONE NFI AS OF MARCH 2017

## CORE ITEMS SUPPLEMENTARY ITEMS

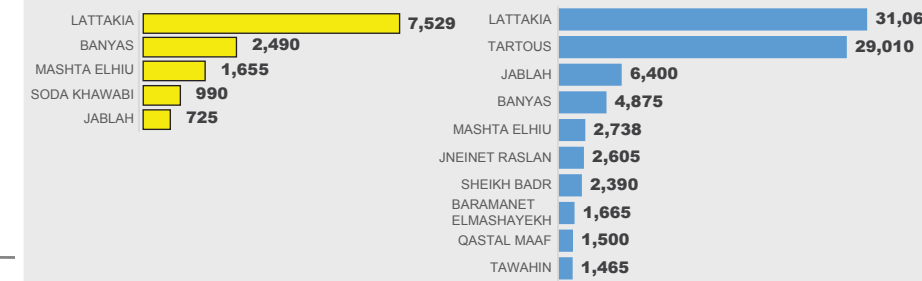
# 13,389

PEOPLE WHOSE NEEDS WERE ADEQUATELY MET FOR RECEIVING MORE THAN 4 CORE NFI ITEMS (2% OF THE 606,000 PEOPLE IN NEED IN TARTOUS AND LATTAKIA GOVERNORATES)

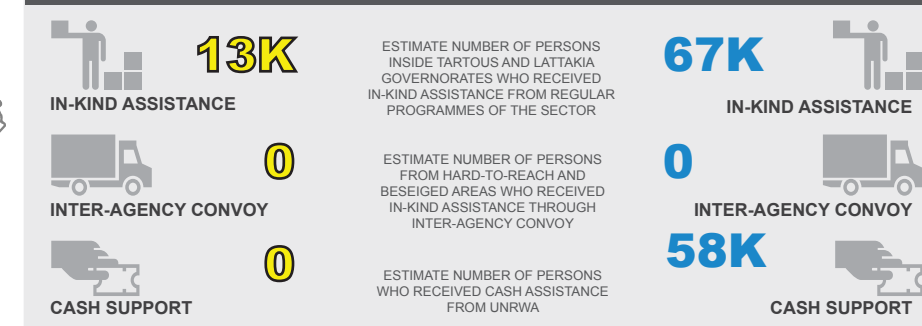
# 87,119

PEOPLE WHO RECEIVED AT LEAST 1 SUPPLEMENTARY ITEM WHICH INCLUDES SEASONAL ITEMS (14% OF THE 606,000 PEOPLE IN NEED IN TARTOUS AND LATTAKIA GOVERNORATES)

## TOTAL BENEFICIARIES PER SUB-DISTRICT (TOP 10)

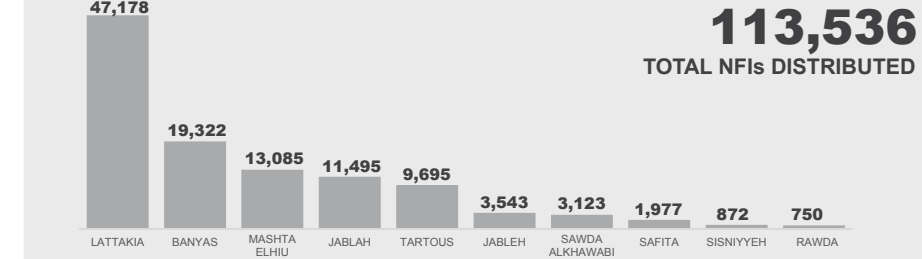


## BENEFICIARIES REACHED BY TYPE OF SUPPORT



NOTE: Breakdown of beneficiaries per type of support does not necessarily sum up to the reported number of beneficiaries as some communities may have received more than one type of assistance.

## TOTAL NFI DISTRIBUTED PER SUB-DISTRICT



## TOTAL NFI DISTRIBUTED PER TYPE



## TOTAL NFI DISTRIBUTION PER MONTH

