



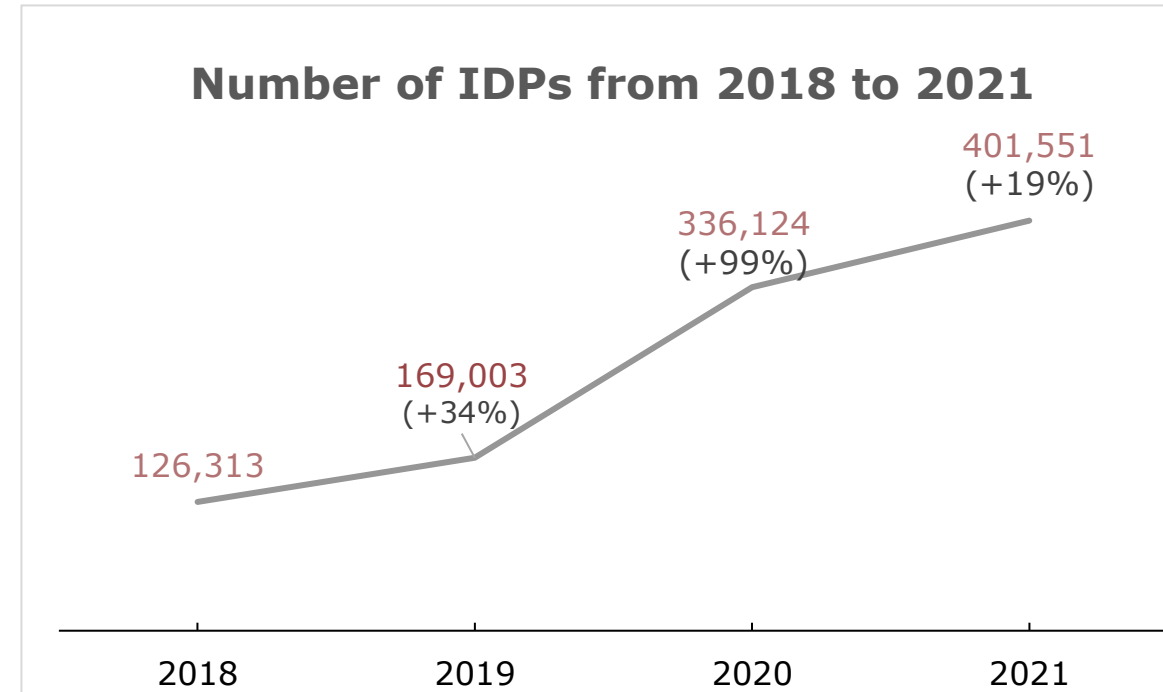
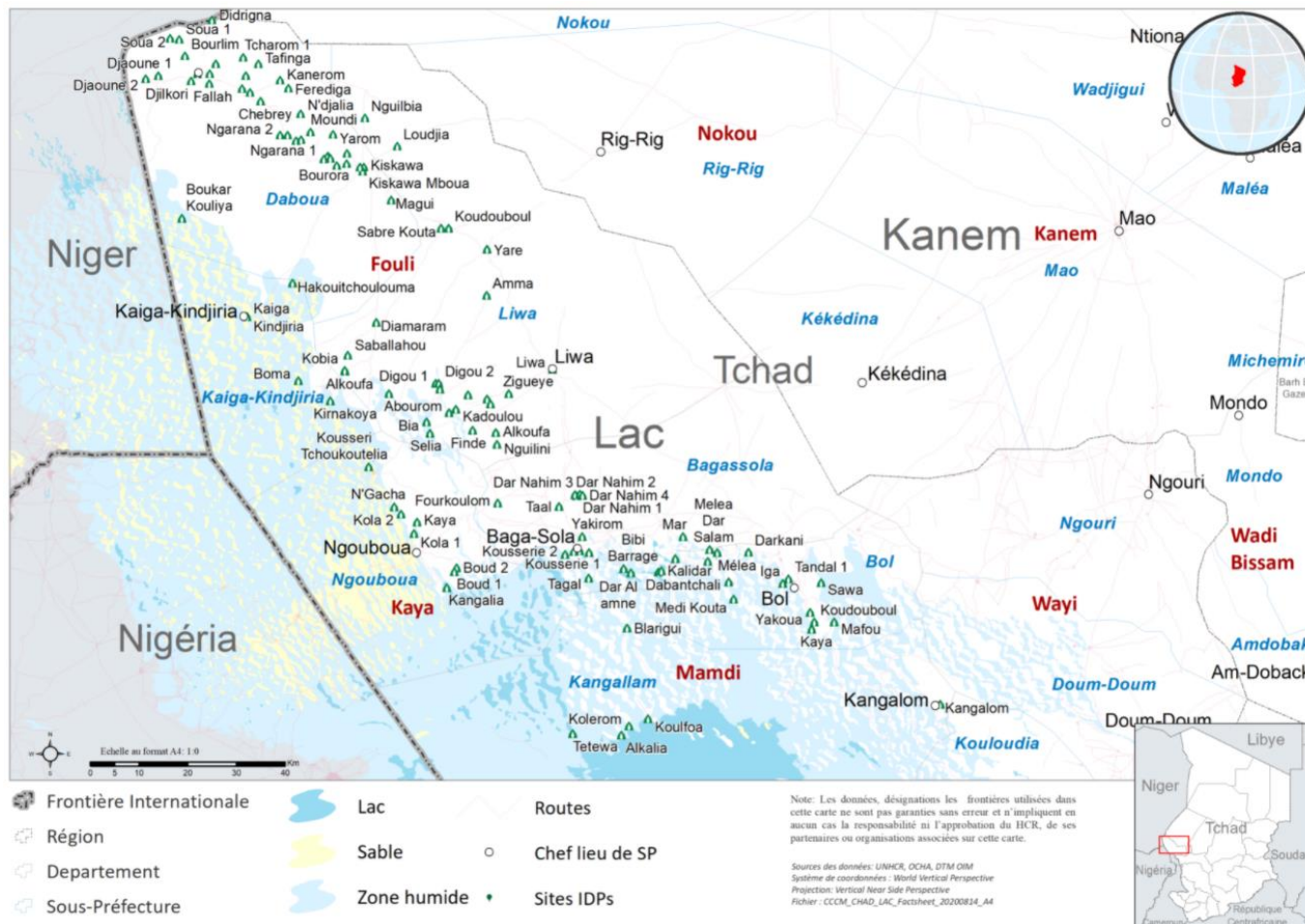
Armand N'Dri -UNHCR, Forkolom site/Lake Province, Chad, May 2021

Country Presentations - Global Shelter Cluster Meeting 2021

CHAD CCCM/SHELTER/NFI CLUSTER

Wednesday 06 OCTOBER – 14:00 CEST/13:00 CHAD

Site locations and key figures



Overview (Conflict & Disaster)

1. Conflict

- Eight (8) years with insecurity in Lake Chad Province:
 - ✓ Non-Government armed groups continue to attack, kill and burn civilian villages
 - ✓ Consequence of attacks: 401,551 IDPs located in 220 sites and host communities (*DTM 14/08/21*)
- Displacement due to sporadic intercommunity conflicts in East of Chad
- Refugees/Asylum seekers

Overview (Conflict & Disaster)

2. Disaster

- Displacements due to rise of water level of Lake Chad after the rainy season.
- Provinces such as Tandjile, Moyen Chari, Mandoul and Logone Orientale registered 255,044 flood displaced individuals during summer 2021
(*source: OCHA*)

Overview (other movements)

- **Migrants:**

Mostly Chadians returning from Libya

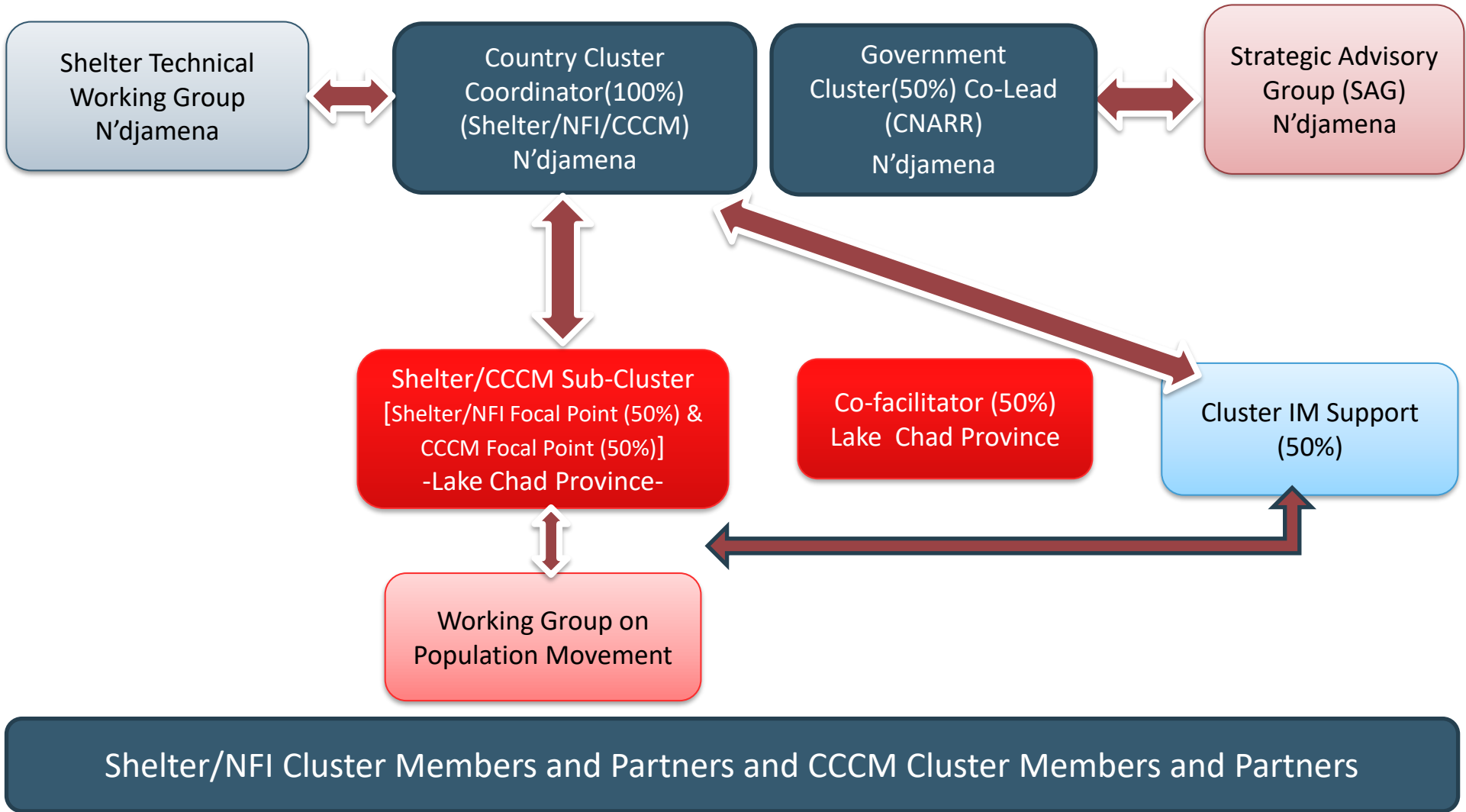
- **Transhumance:**

Displacement of people in search for pasture for livestock

Overview (Operational Response)

- High shelter needs for people displaced in camp-like sites and among host communities
- Mixed movements (IDPs, Refugees, Migrants and asylum seekers)
- The CCCM/Shelter/NFI Cluster is responsible for only IDPs
- Local authorities prohibited the cutting of trees
- Few NGOs to intervene in shelter construction while many are focusing on NFI distribution
- Most INGOs are part of a consortium funded by ECHO through RRM (Rapid Response Mechanism) and focus mainly on NFI distribution

Cluster Coordination



CCCM/SHELTER/NFI Cluster Partners & Observer(23)

UN Agencies

- UNHCR (Lead)
- IOM
- UNICEF
- FAO
- OCHA
- WFP
- WHO

Government

- CNARR (Co-lead)

NGOs

- | | |
|-----------------|--------------|
| ■ ACTED | ■ AHEAS |
| ■ CRT | ■ WCDO |
| ■ OXFAM | ■ HELP TCHAD |
| ■ CR Luxembourg | ■ CHAILD |
| ■ ACF | ■ OPIHDEL |
| ■ CARE | ■ CAIDEL |
| ■ Diakonie | |
| ■ APSELPA | |

Donor Representative (Observer)

- ECHO

Chad Shelter/NFI Cluster Strategy

- Support newly displaced persons with emergency shelters
- Transform emergency shelters into transitional/permanent shelters
- Support protracted IDPS (2+ years with no intention to return) with permanent shelters (Humanitarian-Development nexus)
- Provide shelter technical trainings to displaced communities to reinforce their capacity and resilience (cash for livelihoods)
- Joint food and NFI distributions (Shelter and Food Security Clusters)

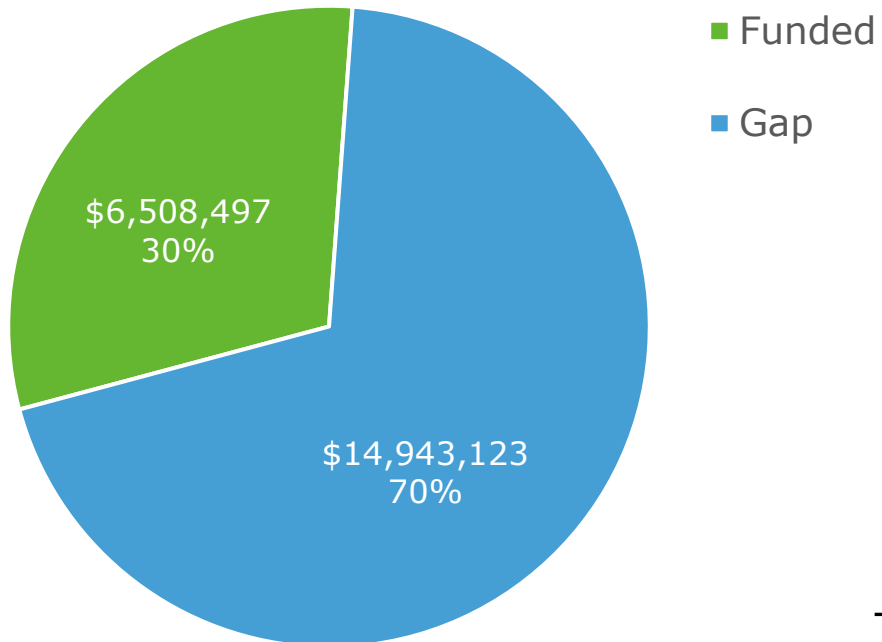
Chad Shelter/NFI Cluster Strategy (continued)

- Use of cash transfer modality whenever possible
- Protection mainstreaming: Shelter assistance to persons with specific needs
- Beneficiary consultation on shelter needs
- Planting trees to replace those cut and to promote environmental protection

SHELTER/NFI Cluster Funding

Shelter Cluster funding level
(\$USD)

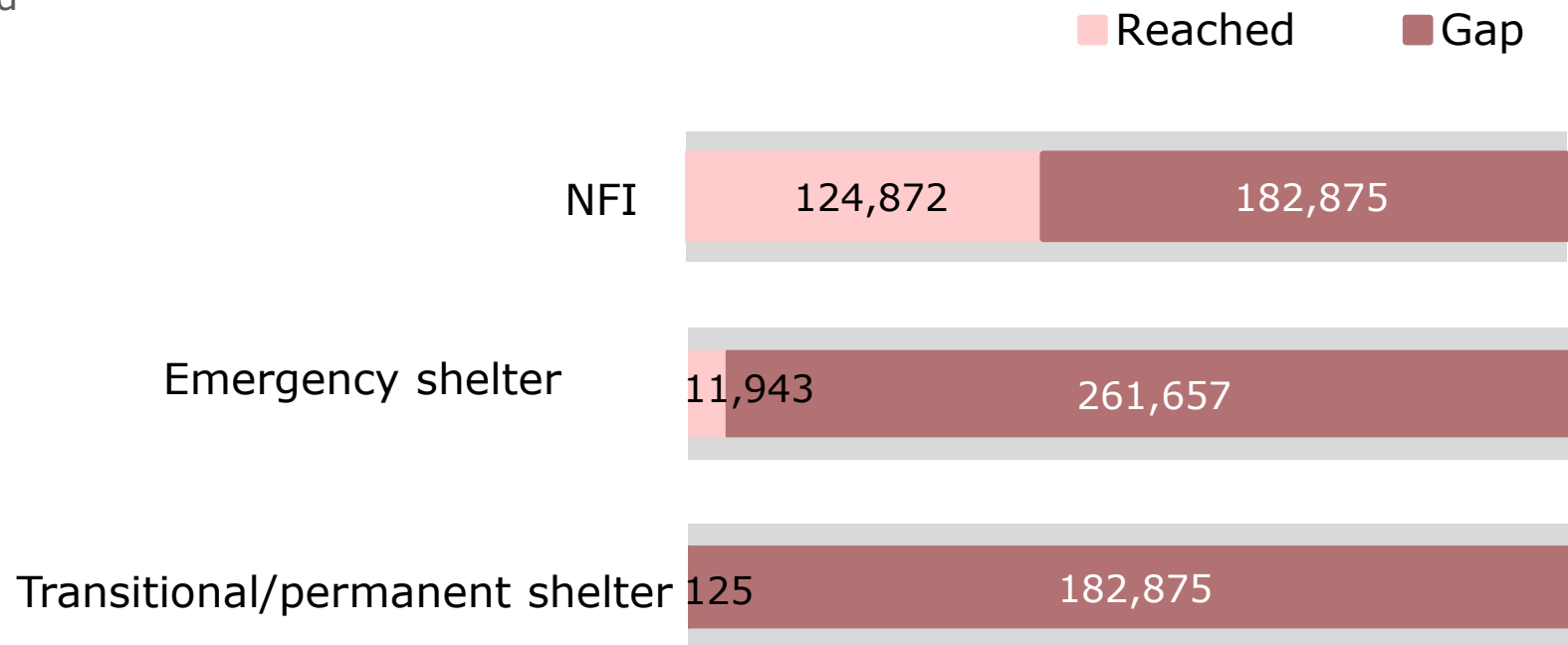
Funding required : **\$ 21,451,621**



Source: Partners

Targeted (HRP 2021): 460,000 individuals

Reached (as August 2021): **136,940** individuals



Capacity Building/Training



Capacity Building/Training (continued)

- **13 July 2021:**

Workshop on validation of shelter models and sites consolidation

- **From 22 to 23 September 2021:**

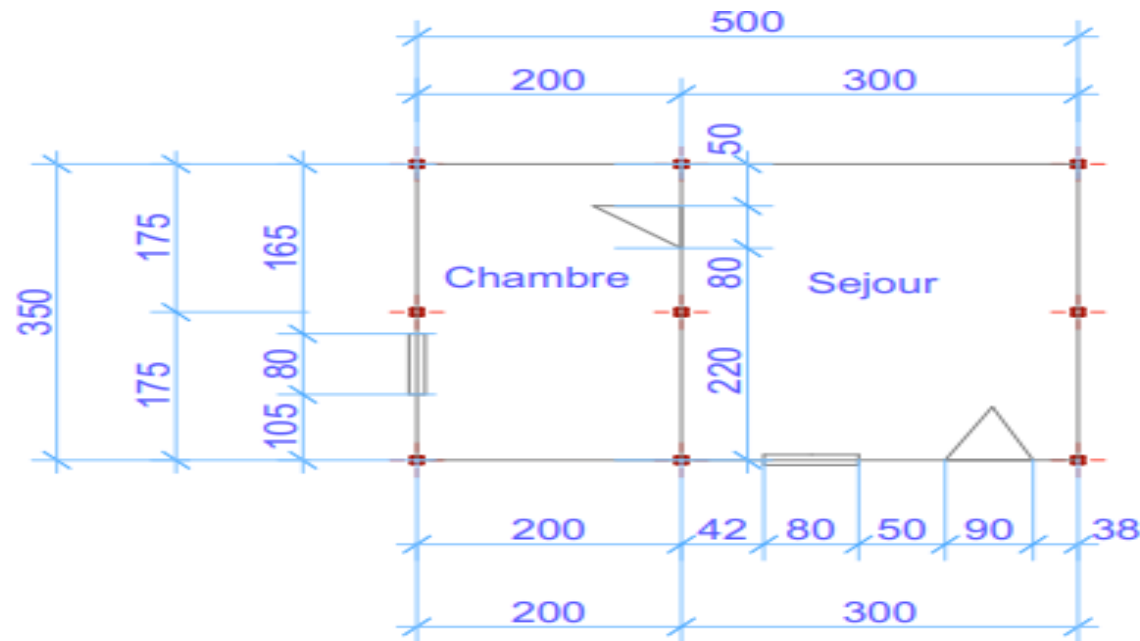
Training workshop organized by CCCM/Shelter/NFI sub-cluster on shelter construction and sites coordination and management with National Cluster

- **Way forward:**

SAG meeting to validate the revised design of emergency and transitional/permanent shelters.

Capacity Building/Training (continued)

- E-Shelter design revised:



Modele abri d'urgence en caille+toiture en tole

E-Shelter perspective

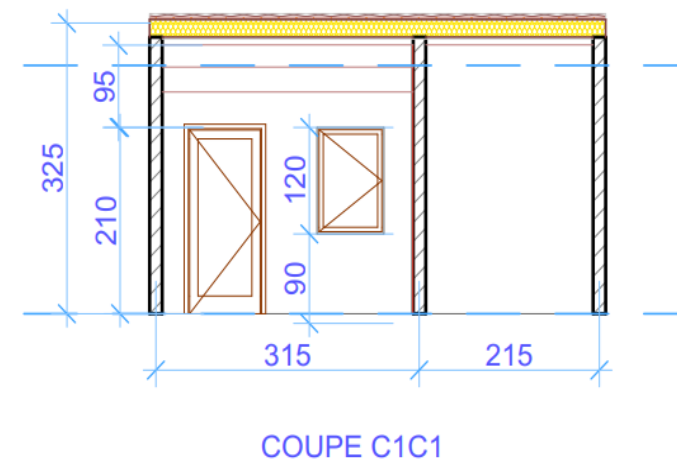
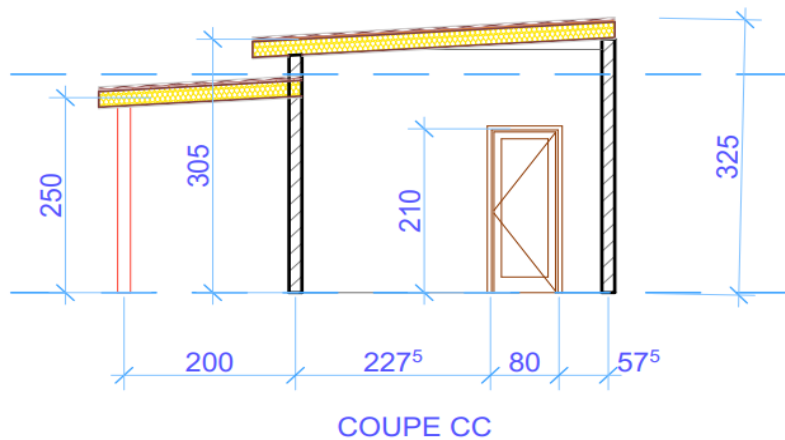
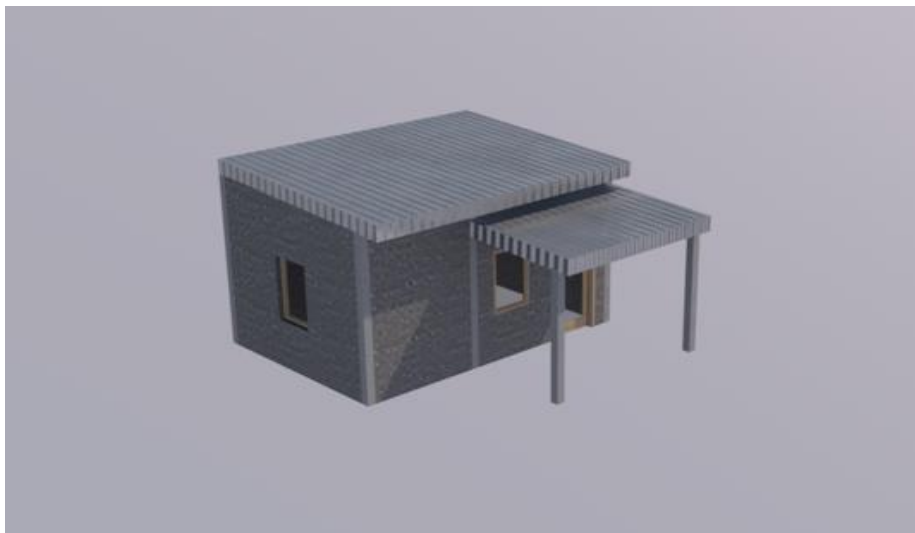


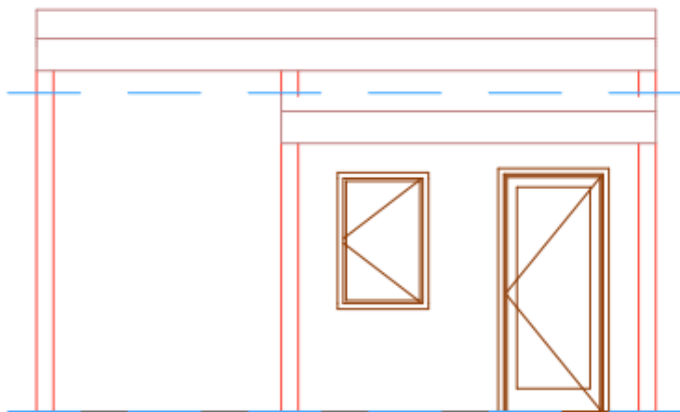
Transitional shelter model



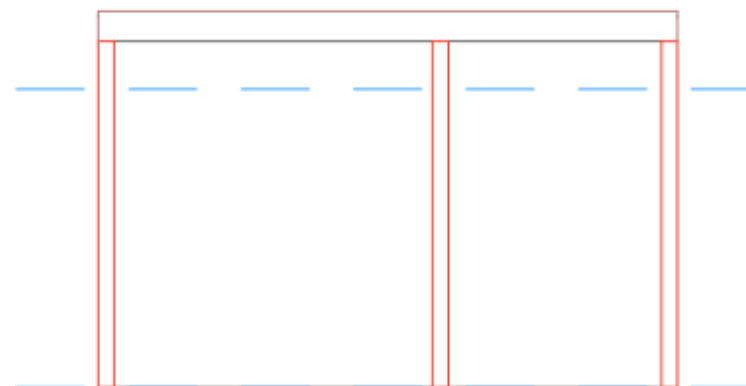
Kemingue-UNHCR, Dar-es-salaam camp /Lake Province, Chad, September 2021

Permanent shelter layout

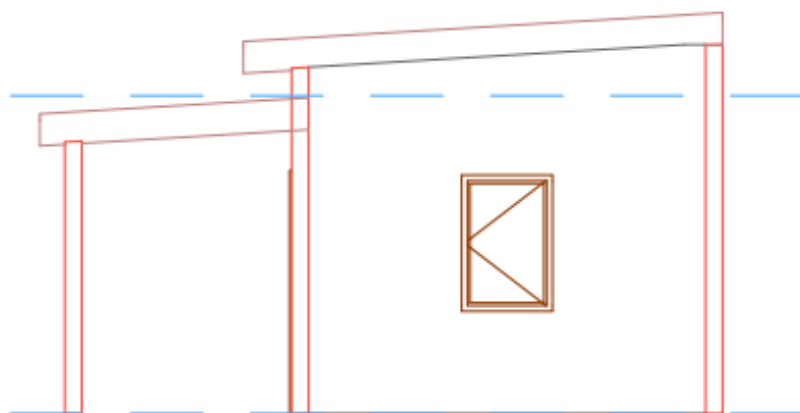




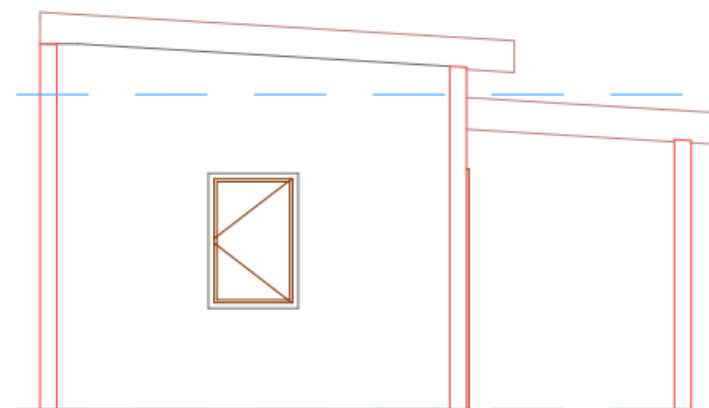
Façade Principale



Façade arriere



Façade Laterale Droite



Façade Laterale Gauche

Permanent shelter pictures



HPC 2022 Process and schedule

30 August '21:	Validation of TOR for Strategic Analysis WG and HPC 2022 workshops
8-15 September '21:	Workshops to analyze context and evaluate needs
21-29 September '21:	Adoption of way forward and presentation of workshop results
5 October '21:	Risk analysis and projections
12 October '21:	Presentation and validation of sectoral needs analysis by ICCG and preparation of the HNO 2022 validation workshop
19 October '21:	Presentation of PIN calculation, Strategic Framework 2017-2023 and priority response approaches
20-21 October '21:	HNO Validation Workshop
9 November '21:	FS-Shelter/NFI integrated strategy analysis
16 November '21:	Presentation of PINs and calculation method
23 November '21:	Presentation of Shelter/CCCM sectoral strategy
7 December 2021:	Presentation of conclusions on projects submitted and key figures planning
TBD:	Workshop to validate and launch HRP 2022

Challenges

- Limited funds to implement the agreed shelter cluster strategy
- Limited number of partners involved in shelter construction (90% of IDPs do not intend to return to areas of origin; big need to support permanent shelters)
- Limited localization – (Local/National NGOs only receive funds from UN and INGOs; need direct funding from donors)
- No dedicated staff to support the efficiency of the Shelter Cluster (Double Hatting)
- Insufficient UNHCR funding to play its role as 'provider of last resort'
- Cluster staff rotation and interruptions of contracts

QUESTIONS ?

