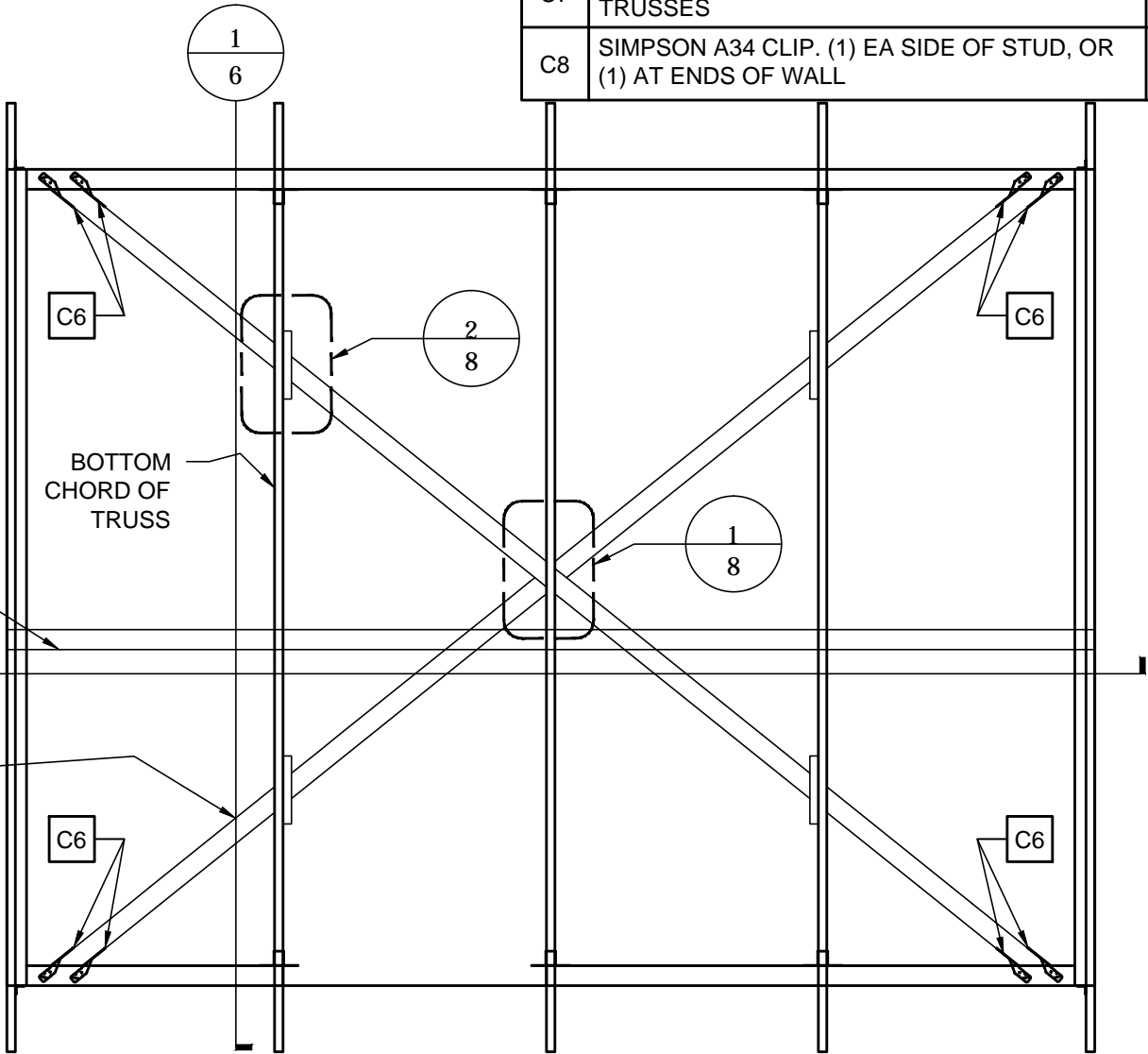


ROOF PLAN

SCALE: 3/8" = 1'

- NOTES:
- 1. INTERIOR WALLS NOT SHOWN
 - 2. METAL ROOFING ATTACH AT EA PURLIN AT EVERY CORRUGATION



CEILING PLAN

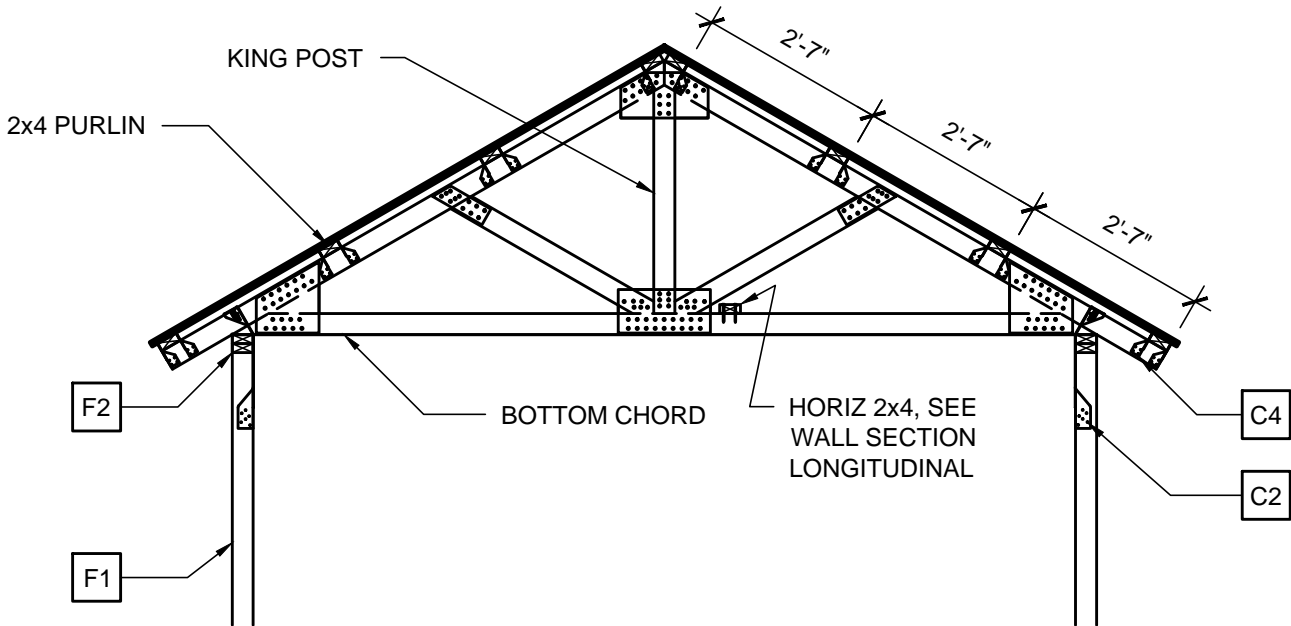
SCALE: 3/8" = 1'

PRELIMINARY
NOT FOR CONSTRUCTION

80% SUBMITTAL

CONNECTION SCHEDULE		
ID	DESCRIPTION	DETAIL
C1	SIMPSON STHD10. ATTACH TO DOUBLE STUD WITH (28) 10d NAILS	-
C2	SIMPSON H15 OR HTS20 HURRICANE TIE EA TRUSS (EXCEPT FOR GABLE TRUSSES)	-
C3	SIMPSON MASA (OR 1/2" DIAMETER x 7" ANCHOR BOLTS, EMBED 4" IN CONCRETE). MAX SPACING = 4' AND 1' FROM END OF BOTTOM PLATE.	-
C4	(2) SIMPSON H3 HURRICANE TIE, TYPICAL EACH PURLIN TO EACH TRUSS	-
C5	ATTACH HARDIE PANEL TO STUDS W/ 6d NAILS AT 4" ON CENTER, TYPICAL.	-
C6	(2) SIMPSON H8 HURRICANE TIES	-
C7	SIMPSON H8 HURRICANE TIE, AT GABLE TRUSSES	-
C8	SIMPSON A34 CLIP. (1) EA SIDE OF STUD, OR (1) AT ENDS OF WALL	-

DATE	XXXXXX				
BY	RR				
DESCRIPTION					
REV	Δ	Δ	Δ	Δ	Δ
RELEASED FOR REVIEW					
RILEY ENGINEERING & CONSULTING Structural Design					
SE FOR TRANSITIONAL HOUSE PREPARED AT THE REQUEST OF CONCERN WORLDWIDE HAUT					
ROOF PLAN					
DRAWN BY: RR					
CHECKED BY: RR					
JOB NUMBER: 100402					
SHEET					
2					



WALL SECTION - TRANSVERSE

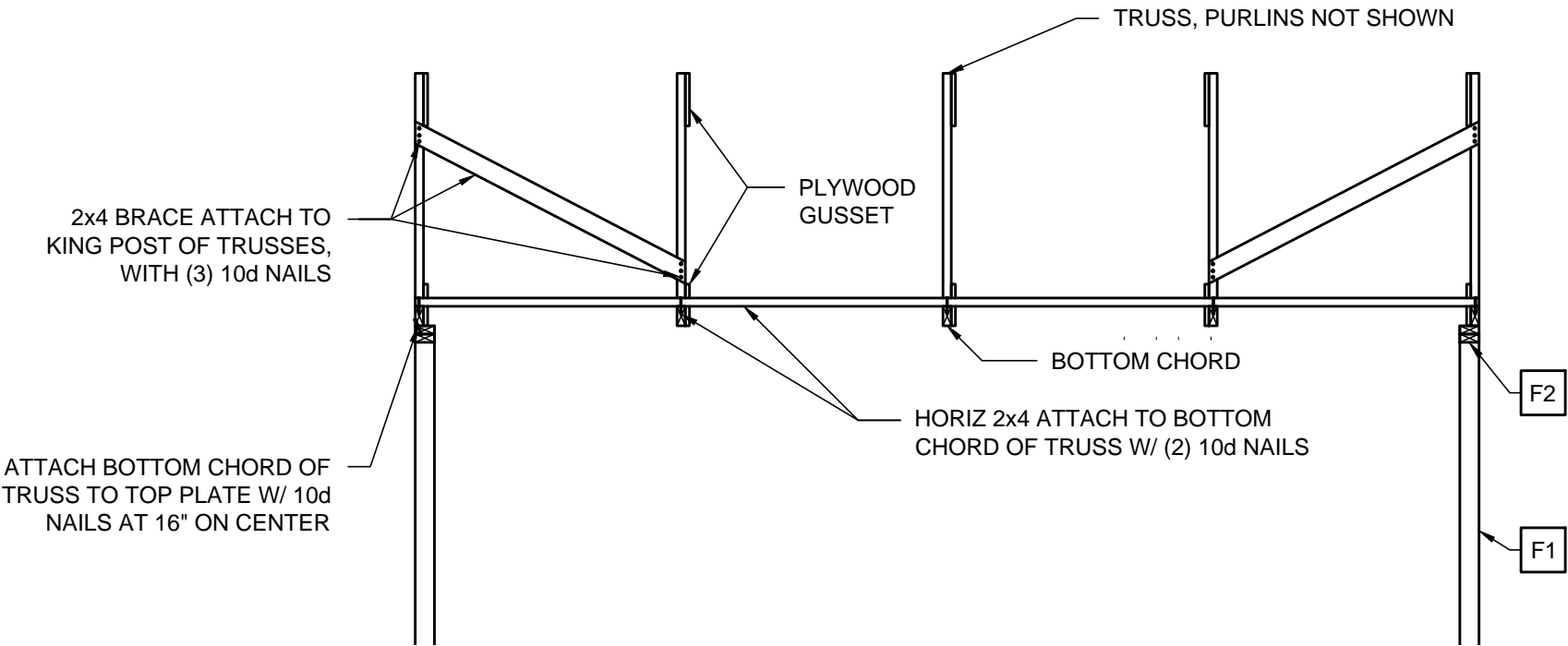
SCALE: 3/8" = 1'

1

FRAMING NOTES

ID	DESCRIPTION	DETAIL
F1	WALL FRAMING - 2x4 @ 16" ON CENTER, TYP	-
F2	2x4 DOUBLE TOP PLATE, TYP	-
F3	ATTACH 4' LONG 2x4 TO 2x4 WALL STUD WITH (8) 10d NAILS AT LOCATIONS BELOW TRUSS (3) LOCATIONS	-
F4	NAIL TOP AND BOTTOM PLATE TO STUD W/ (2) 10d NAILS, TYPICAL	-
F5	BOTTOM PLATE AT DOOR OPENING CAN BE LEFT IN PLACE UNTIL AFTER ERECTION .	-
F*	-	-

CONNECTION SCHEDULE		
ID	DESCRIPTION	DETAIL
C1	SIMPSON STHD10. ATTACH TO DOUBLE STUD WITH (28) 10d NAILS	-
C2	SIMPSON H15 OR HTS20 HURRICANE TIE EA TRUSS (EXCEPT FOR GABLE TRUSSES)	-
C3	SIMPSON MASA (OR 1/2" DIAMETER x 7" ANCHOR BOLTS, EMBED 4" IN CONCRETE). MAX SPACING = 4' AND 1' FROM END OF BOTTOM PLATE.	-
C4	(2) SIMPSON H3 HURRICANE TIE, TYPICAL EACH PURLIN TO EACH TRUSS	-
C5	ATTACH HARDIE PANEL TO STUDS W/ 6d NAILS AT 4" ON CENTER, TYPICAL.	-
C6	(2) SIMPSON H8 HURRICANE TIES	-
C7	SIMPSON H8 HURRICANE TIE, AT GABLE TRUSSES	-
C8	SIMPSON A34 CLIP. (1) EA SIDE OF STUD, OR (1) AT ENDS OF WALL	-



WALL SECTION - LONGITUDINAL

SCALE: 3/8" = 1'

PRELIMINARY
NOT FOR CONSTRUCTION

80% SUBMITTAL

DATE
XXXXXX

BY
RR

DESCRIPTION

RELEASED FOR REVIEW

REV

RILEY ENGINEERING
& CONSULTING

Structural Design

PROFESSIONAL ENGINEER
ROBERT RILEY
No. 63394
Exp. 9/30/17
CIVIL
HAWAII

SE FOR TRANSITIONAL HOUSE

PREPARED AT THE REQUEST OF
CONCERN WORLDWIDE
HAWAII

WALL SECTIONS

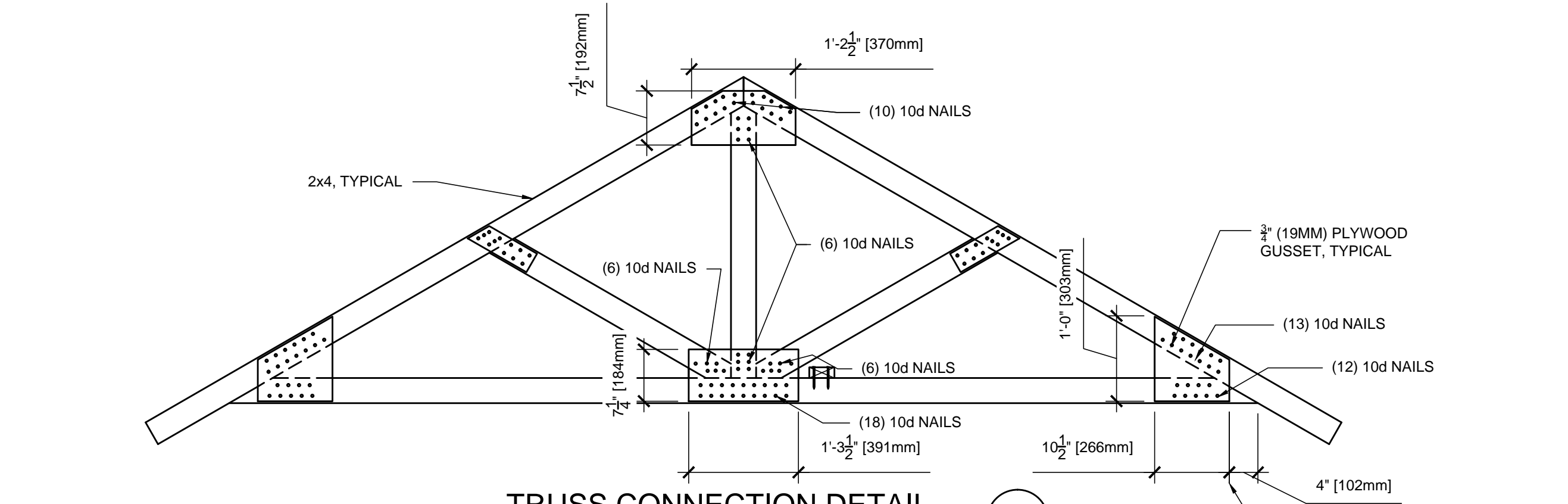
DRAWN BY: RR

CHECKED BY: RR

JOB NUMBER: 100402

SHEET

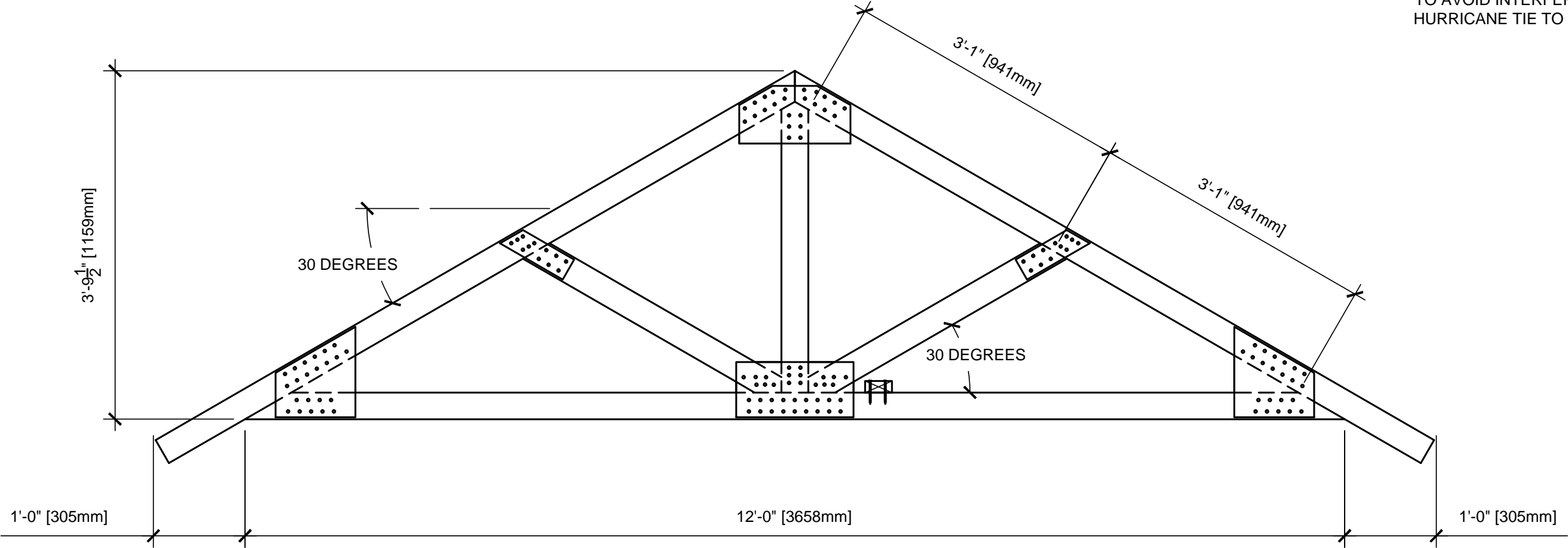
6



TRUSS CONNECTION DETAIL

SCALE: 3/4" = 1'

1



TRUSS LAYOUT DETAIL

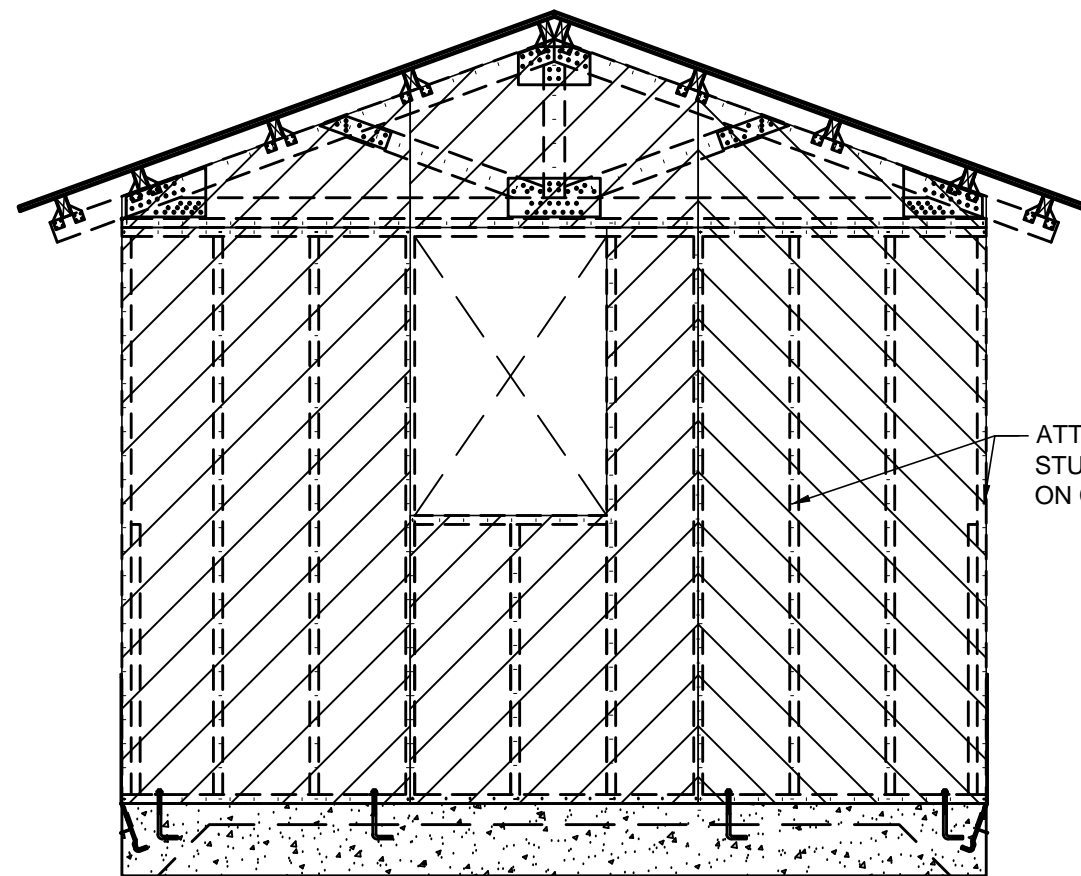
SCALE: 3/4" = 1'

2

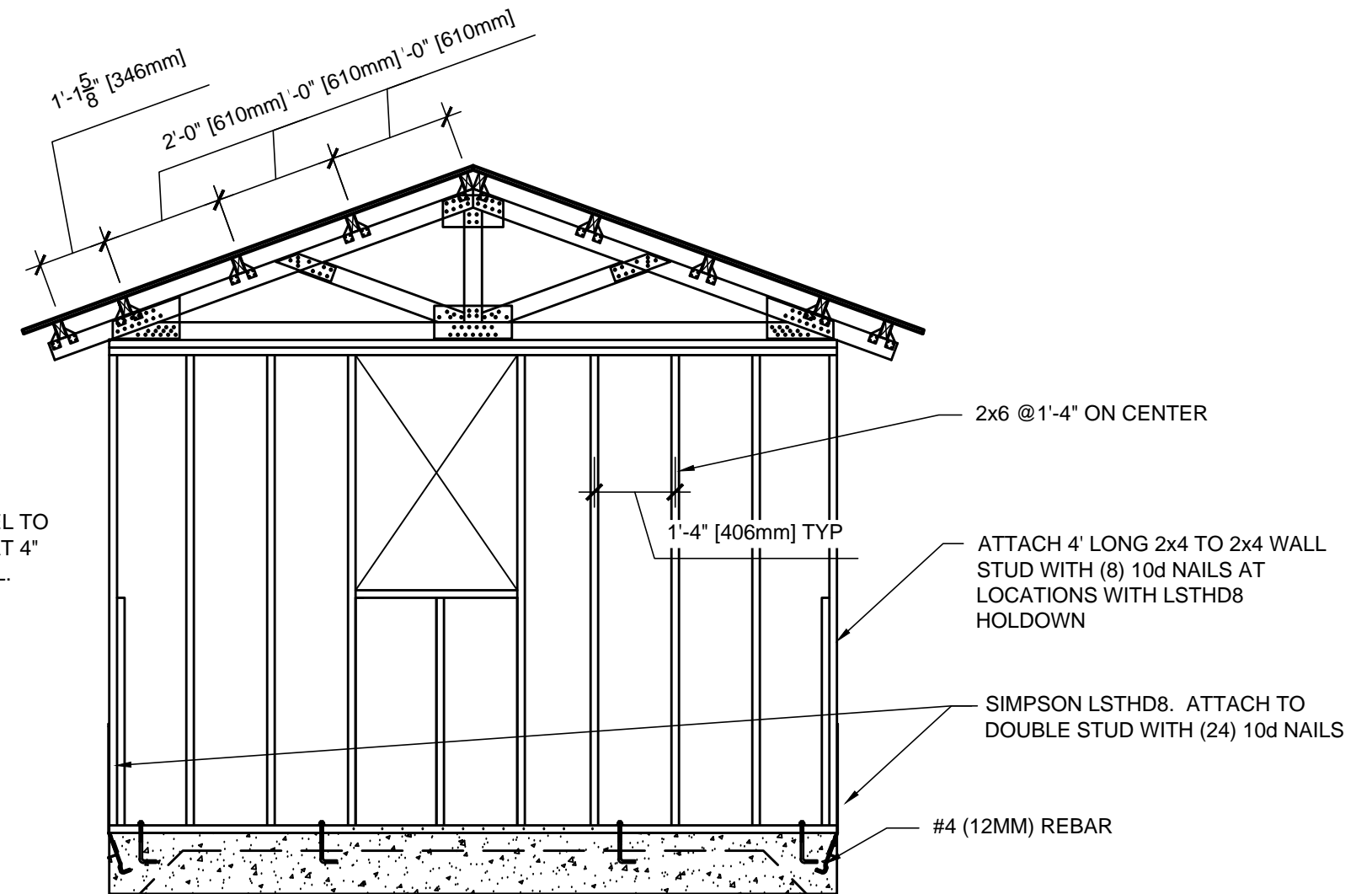
PRELIMINARY
NOT FOR CONSTRUCTION

80% SUBMITTAL

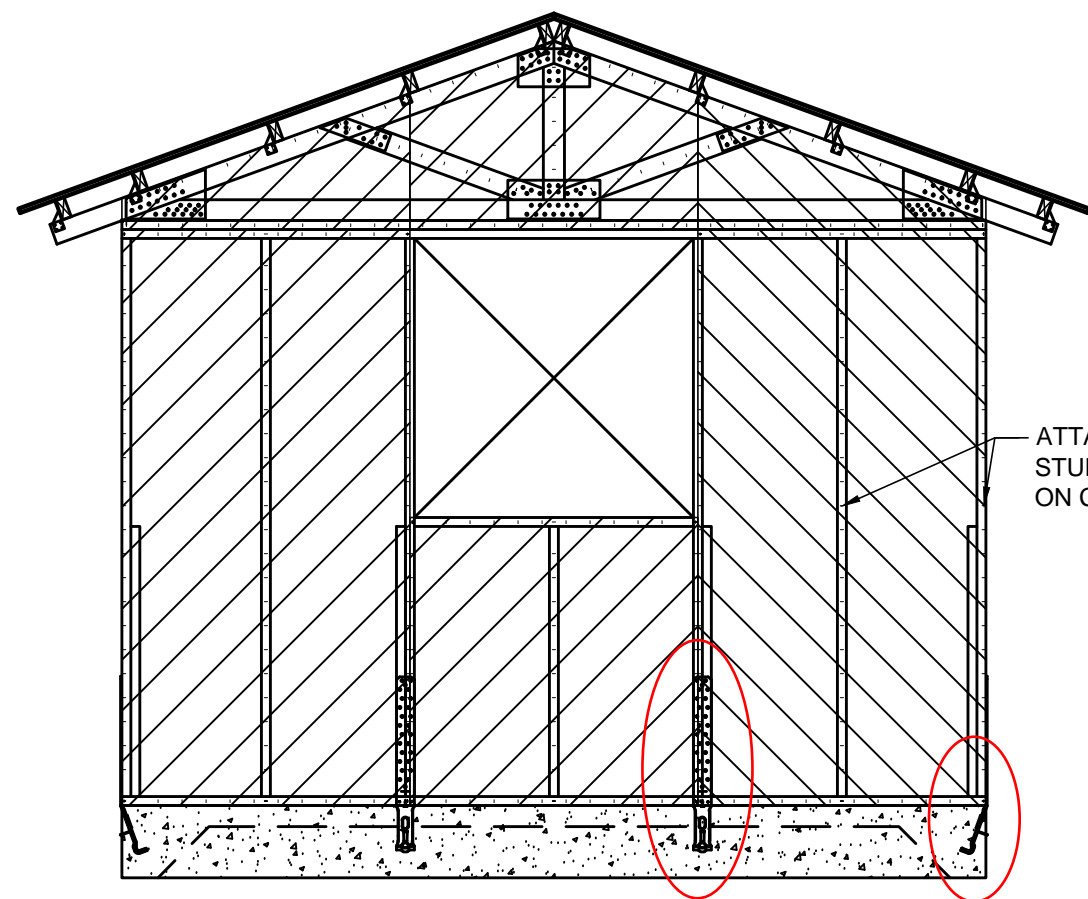
DATE	XXXXXX
BY	RR
DESCRIPTION	
RELEASED FOR REVIEW	
FILE	
RILEY ENGINEERING & CONSULTING Structural Design	
SE FOR TRANSITIONAL HOUSE PREPARED AT THE REQUEST OF CONCERN WORLDWIDE HAITI	
TRUSS DETAILS	
DRAWN BY:	RR
CHECKED BY:	RR
JOB NUMBER:	100402
SHEET	7



GABLE WALL ELEVATION



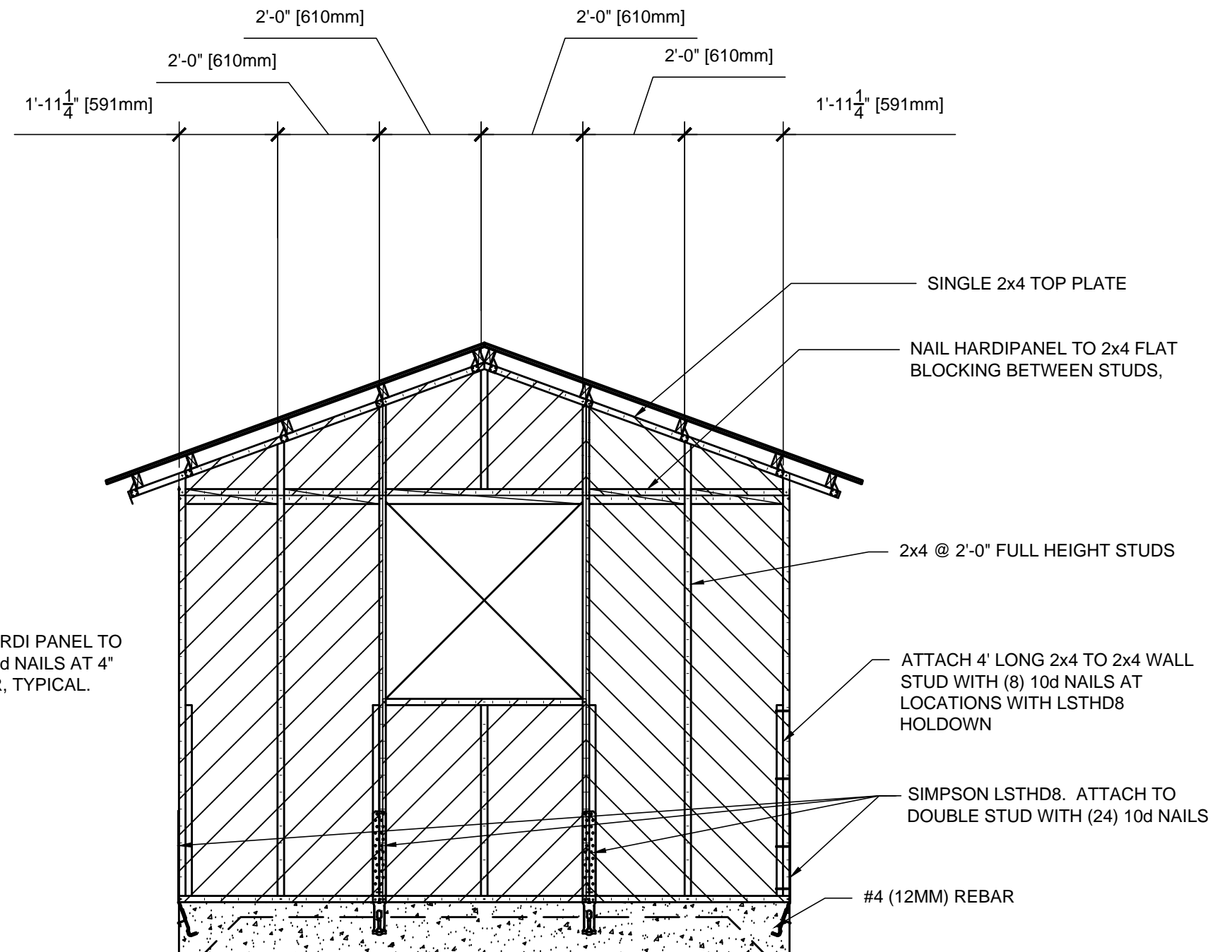
GABLE WALL FRAMING



ATTACH HARDI PANEL TO STUDS W/ 6d NAILS AT 4" ON CENTER, TYPICAL.

WALL ELEVATION (ALT. 1)

W/ TRUSS



WALL ELEVATION (ALT. 2)

W/ FULL HEIGHT FRAMING (NO TRUSS)

