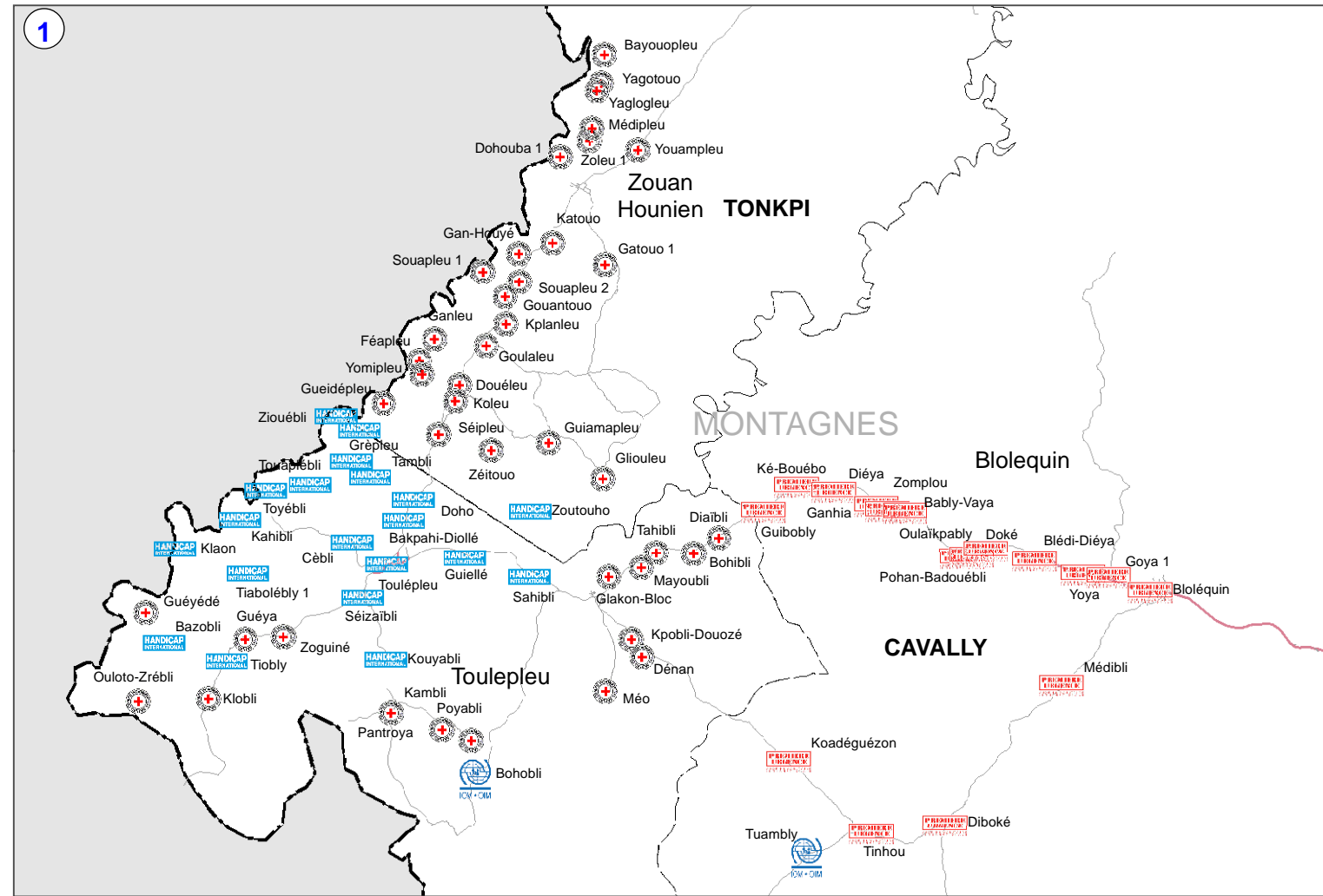
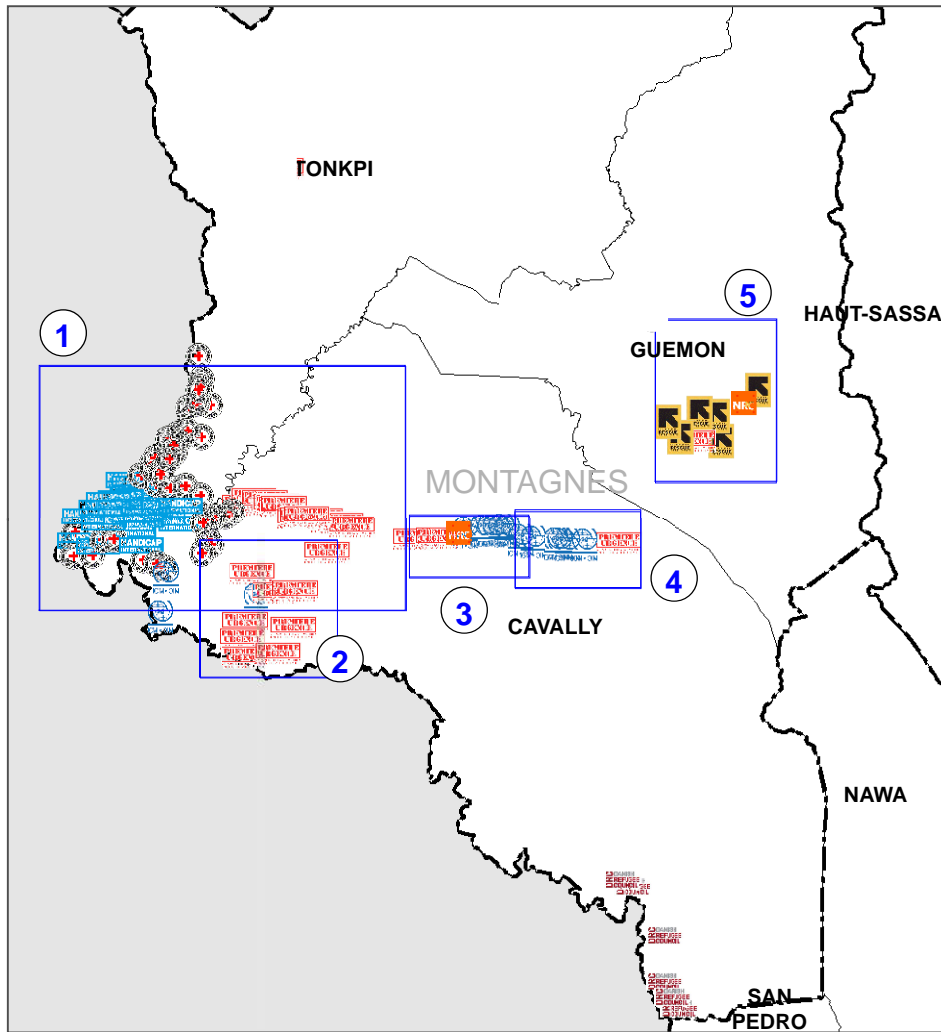


# COTE D'IVOIRE - 3W Cluster Abris et NFI - Distribution de NFIs dans les zones de retour

Date (14 Février 2012)



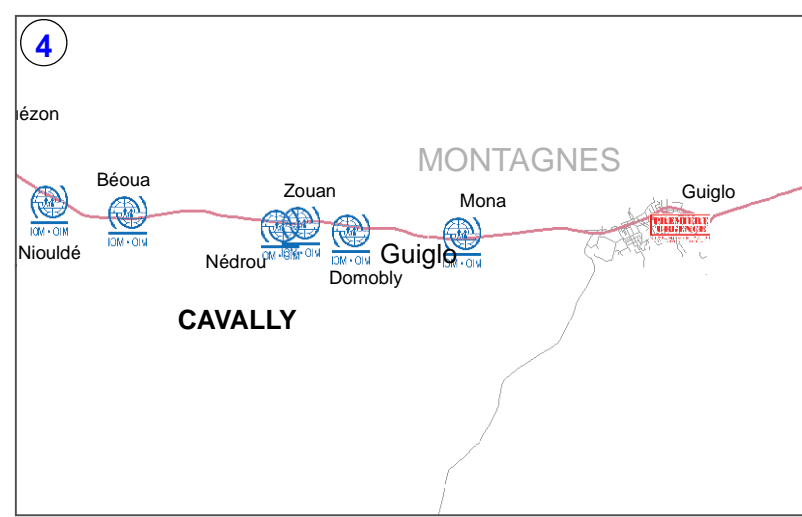
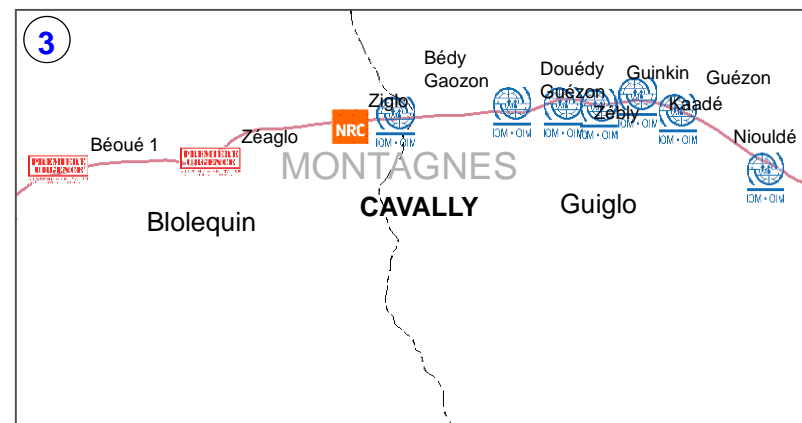
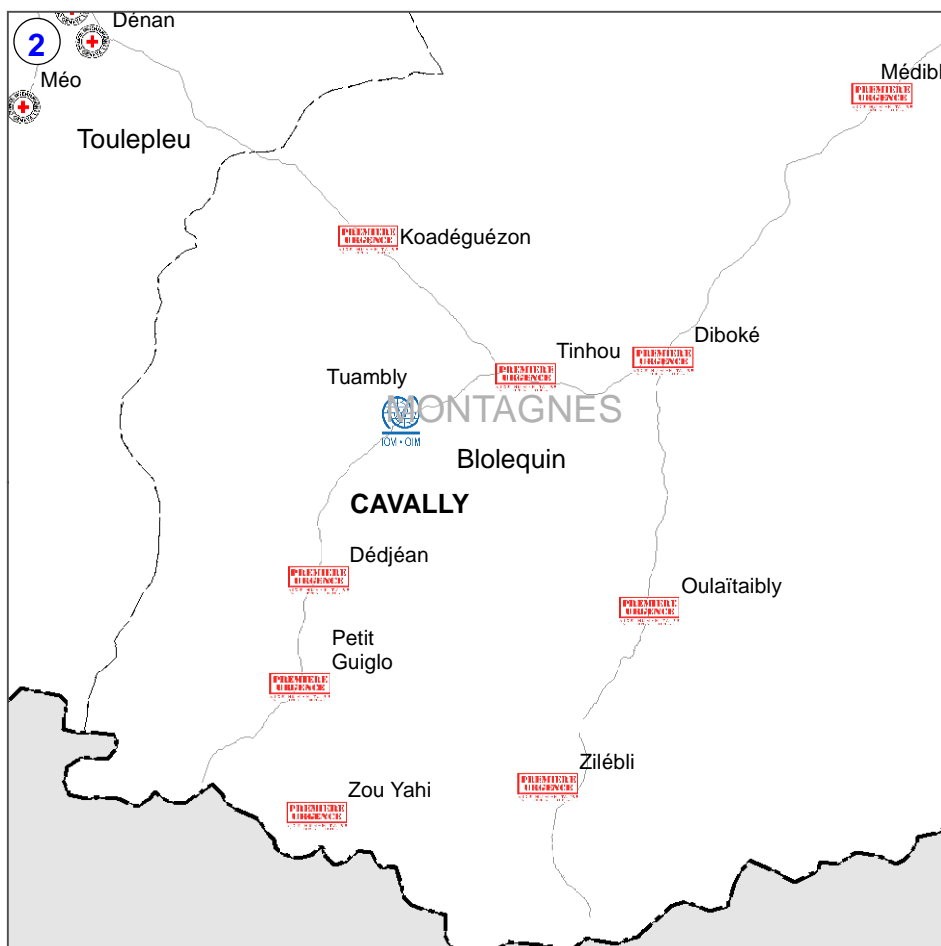
## Legende

- Limite d'Etat
- Limite du district
- Limite de région
- Limite de département
- Route Bitumée
- Route non bitumée

## Acteur

- CICR
- DRC
- HI
- IRC
- NRC
- OIM
- PU/AMI

Produit par :



Map Doc Name: CIV0121 NFIs OUEST A3 20120214  
 GLIDE Number: OT-2010-00255-CIV  
 Creation Date: 14 Février 2012  
 Projection/Datum: UTM 30N/WGS 84  
 Web Resources: <http://ivorycoast.humanitarianresponse.info>  
 Nominal Scale at A4 paper size: 1:1 626 138



Map data source(s):  
 Spatial dat: CNTIG and OCHA-CI  
 Thematic data: Cluster Abris et NFIS

**Disclaimers:**  
 The designations employed and the presentation of material on this map do not imply the expression of any opinion whatsoever on the part of the Secretariat of the United Nations concerning the legal status of any country, territory, city or area or of its authorities, or concerning the delimitation of its frontiers or boundaries.

