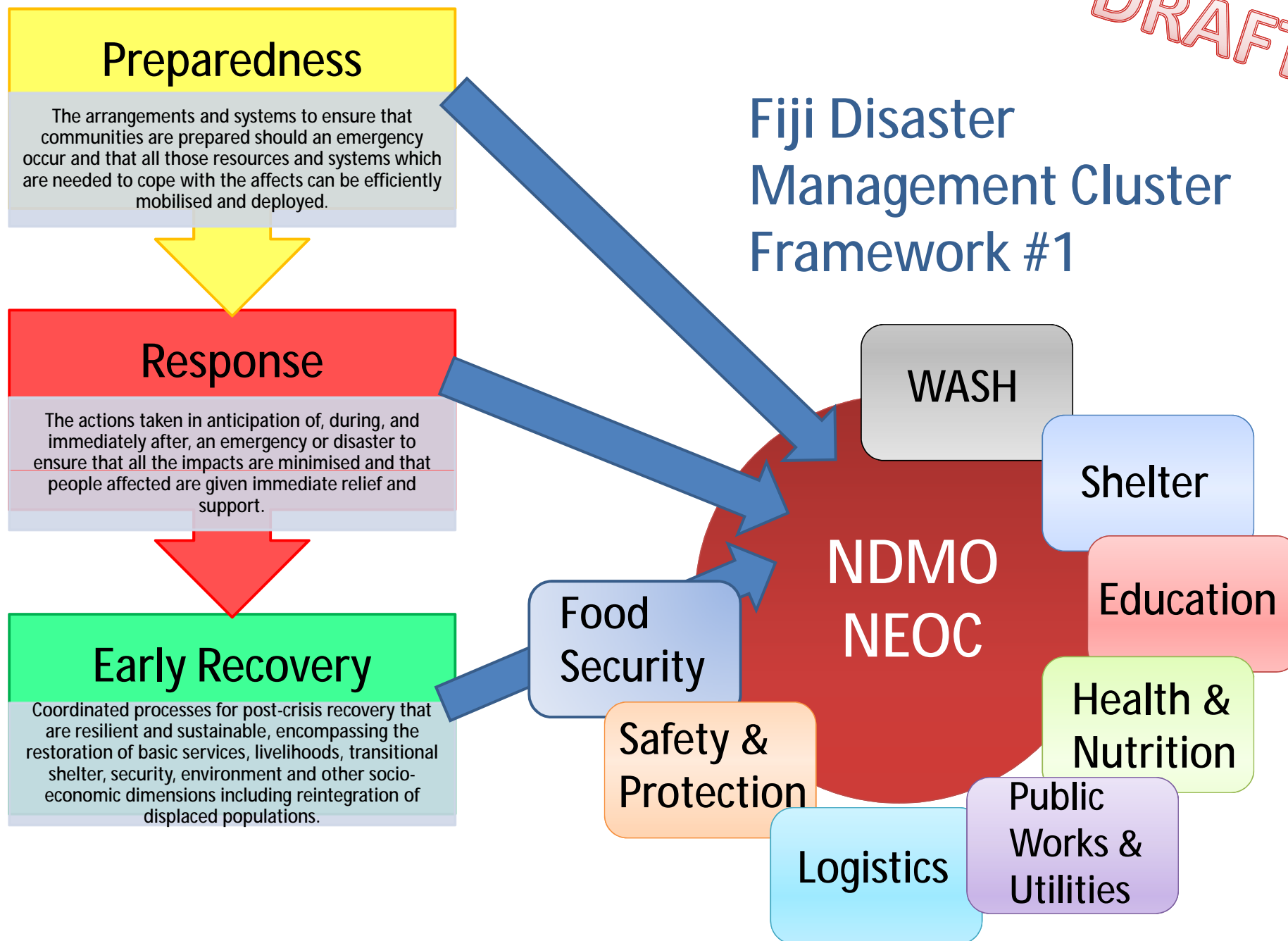


*DRAFT*

# Fiji Disaster Management Cluster Framework #1



# CABINET

Minister for Provincial Development  
and National Disaster Management

## NDMC

National Disaster Controller

DSLOs

WASH

Shelter

Education

Health & Nutrition

Public Works

Logistics

Safety & Protection

Food Security

NDMO  
NEOC

National  
DISMAC

Divisional DISMAC

Divisions

WASH

Shelter

Education

Health & Nutrition

Public Works

Logistics

Safety & Protection

Food Security

DIVEOC

Provinces

Districts

Communities

Cities / Towns / Villages / Rural Areas

WASH

Shelter

Education

Health & Nutrition

Public Works

Logistics

Safety & Protection

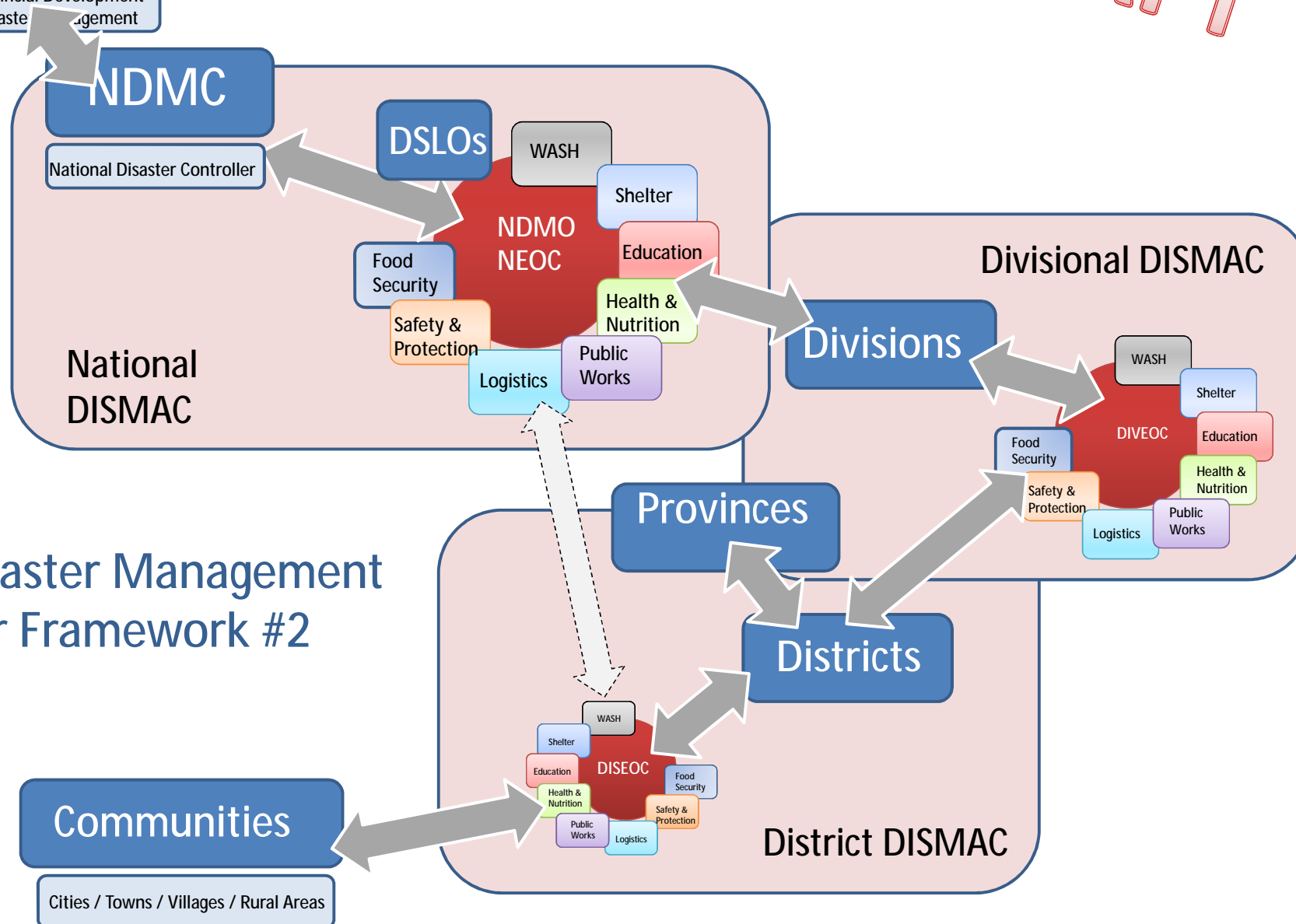
Food Security

DISEOC

District DISMAC

Fiji Disaster Management  
Cluster Framework #2

DRAFT



# Fiji Disaster Management. Proposed Cluster Approach to Strengthen Coordination for Disaster Preparedness, Response and Early Recovery.

## DRAFT Discussion Paper

The role of the Cluster Lead should be to facilitate the work of the Cluster, to ensure:

- ü Key Partners are included
- ü Appropriate coordination
- ü Cross-cutting issues are addressed
- ü Effective needs assessment and analysis
- ü Adequate contingency planning and preparedness
- ü Application of standards, monitoring and reporting
- ü Advocacy and resource mobilisation
- ü Training and capacity building

# Core

## Agencies

### Government Lead

NDMO

### Co-Lead

UNOCHA

### Key Partners

#### Cluster Leads and Co-Leads

Ministry of Finance

Ministry of Foreign Affairs and International Cooperation

Prime Minister's Office

Ministry of Public Enterprises, Communications, Civil Aviation and Tourism

Ministry of Strategic Planning, National Development & Statistics

Ministry of Information

Itaukei Affairs

Public Service Commission

Fiji Red Cross

The Core of the proposed Fiji DM Cluster system would provide all of the services required to ensure that the work of each Cluster is appropriately facilitated, coordinated and supported. Roles for the Core are summarised as coordination, planning, funding and communication.

The NDMO is listed as the logical lead for the Core, with UNOCHA playing a supporting Co-Lead role for coordination, information and assisting efforts for international assistance where deemed necessary. Is this appropriate? Are all the Key Partners listed?

# 1. Education

## Agencies

### Government Lead

Ministry of Education

### Co-Lead

??

### Key Partners

Save the Children

UNICEF

AQEP (Access to Quality Education Program)

Ministry of Provincial Development - Divisional Offices

The Education Cluster is accountable for ensuring a more predictable, timely and effective education response, with inter-sectoral links to other relevant clusters.

The Education Cluster in Fiji is already reported as operating at an effective level. A Co-Lead for the Cluster needs to be identified. Are there other Key Partners?

Inter-Agency Network for Education in Emergencies - <http://www.ineesite.org/post/educationcluster/>

## 2. Public Utilities/Works

### Agencies

#### Government Lead

Ministry of Works, Public Utilities and Transport

#### Co-Lead

NDMO ???

#### Key Partners

Fiji Electricity Authority

Water Authority of Fiji

Fiji Meteorological Service

Fiji Roads Authority

Mineral Resources

RFMF

Police

NFA

Corrections

Ministry of Provincial Development - Divisional Offices

Land Transport Authority

Government Shipping Services

Telecom Fiji Limited

Fiji Islands Maritime Safety Administration

Civil Aviation Authority of Fiji

Prisons and Corrections

Forestry Department

SPC

Digicel

Vodafone

The goal of the Public Utilities and Works Cluster is to: plan and implement public utility preparedness activities to help build resilience to disasters respond to the impacts of disasters so that affects on public utilities are minimised and people are not placed at risk, and deliver early recovery works to allow a return to normalcy as soon as possible.

Public utilities are defined as all of the utilities and infrastructure required for communities to operate normally, including electricity, water, roads, transport, communications, shipping and civil aviation

Is the Ministry of Works, Public Utilities and Transport the appropriate Lead? If so then presumably this would require a responsible Officer in the Ministry to be designated full-time as a Public Utilities and Works Disaster Manager? Is NDMO the right Co-Lead? Is the above definition appropriate?

# 3. Health

## Agencies

### Government Lead

Ministry of Health

### Co-Lead

WHO

### Key Partners

Department of Agriculture (DOA)

Fiji Health Sector Support Program

Ministry of Provincial Development - Divisional Offices

NDMO

FIBOS (Data on EA)

UNICEF

FAO

SPC

UNFPA

FRC

Fiji Disabled Persons Federation

The Health Cluster goal is to reduce avoidable mortality, morbidity and disability and restore the delivery of and equitable access to preventative and curative health care as quickly as possible and in as sustainable a manner as possible. The Health Cluster includes nutrition activities. The Health Cluster in Fiji is already reported as operating at an effective level.

Are the Lead and Co-Lead appropriate?

Is the Key Partner list correct? Is the goal OK?

## 4. WASH

### Agencies

#### Government Lead

Ministry of Health

WAF / WSD

#### Co-Lead

UNICEF

#### Key Partners

Ministry of Women and Social Welfare

Fiji Red Cross

Fiji Meteorological Service

Ministry of Works, Transport and Public Utilities

Ministry of Provincial Development - Divisional Offices

WHO

SPC

UNDP

UN Women

IFRC

Save the Children

Fiji Water Foundation (Rotary)

Fiji Live and Learn

Fiji Water / Aqua

The goal for the Water, Sanitation and Hygiene Cluster is to improve the efficiency and effectiveness of WASH interventions in emergencies by ensuring effective system-wide preparedness, providing the ability to deliver an immediate and appropriate response and participating in actions to facilitate early recovery. Two Government Leads have been identified. Is this appropriate (will it work)?

Is the list of Key Partners correct?

Can the above goal statement be improved? What actions can be taken to strengthen this cluster? Does it need to be strengthened?



# 5. Shelter

## Agencies

### Government Lead

NDMO ?/

### Co-Lead

FRC ??

IFRC ??

### Key Partners

Rural Housing

Ministry of Women and Social Welfare

Ministry of Provincial Development - Divisional Offices

UN Habitat

MoH

MoE

Habitat for Humanity

The goal of the shelter cluster is to reduce the vulnerabilities related to shelter and settlement of the disaster-affected population, to provide culturally appropriate, environmentally sustainable and adequate emergency, semi-permanent and permanent shelter and to ensure an immediate and effective emergency shelter response for the affected population. The Shelter Cluster goal is also to deliver preparedness strategies for increased resilience and to facilitate actions for early recovery.

Given the above goal, the Shelter Cluster will be also responsible to identify, assess, select and monitor the ongoing availability and suitability of evacuation shelters

The NDMO is currently shown as the Lead for Shelter. Is this correct? If so does the NDMO have the resources to be able to carry out this role? Are the Co-Leads appropriate? Is the list of Key Partners correct? Can the above goal statement be improved? What actions can be taken to strengthen this cluster?

# 6. Logistics

## Agencies

### Government Lead

Fiji Procurement Office ??

### Co-Lead

? NDMO

?

### Key Partners

Ministry of Finance

RFMF

Ministry of Provincial Development - Divisional Offices

Action for Peace

FRANZ

FRC

Faith based organisations ??

Private Sector ??

The goal of the Logistics Cluster is to plan, implement and control the efficient, cost effective flow and storage of goods and materials, as well as related information, from the point of origin to the point of consumption for the purpose of alleviating the suffering of vulnerable people. The function encompasses a range of activities, including preparedness, planning, procurement, transport, warehousing, tracking and tracing and customs clearance. sector"

# 7. Food Security

## Agencies

### Government Lead

Department of Agriculture

### Co-Lead

MoH ?? FAO?

### Key Partners

Ministry of Health

Ministry of Provincial Development - Divisional Offices

Department of Fisheries and Forests

NDMO

SPC

Agriculture Marketing Authority

SPNDNS

International Funding for Agricultural Development

Taiwan Technical Mission

ADRA

National Food and Nutrition Centre

Natures Way

Fiji Crop and Livestock Council

Commercial Stat. Auth. (FSC, Rewa Rice, FMIB)

FRANZ

The goal of the Food Security Cluster is to plan and implement proportionate, appropriate and timely food security responses in humanitarian crisis situations. In particular, to help ensure that food assistance and agricultural livelihood-based programmes are linked as part of a coordinated response.

The Food Security Cluster integrates food aid, agricultural issues and other livelihood interventions.

Are the Lead and Co-Lead OK? Are the Key Partners all listed? Is the wording for the goal appropriate? IASC, "Proposal to Establish a Food Security Cluster", December 2010

## 8. Protection

### Agencies

Government Lead

??

Co-Lead

??

### Key Partners

Ministry of Women and Social Welfare

Ministry of Defence, National Security and  
Immigration

Ministry of Education

Ministry of Youth

Department of Agriculture

Ministry of Provincial Development - Divisional  
Offices

Police

NFA

RFMF

NDMO

Fiji Red Cross

Fiji National Council of Disabled People

National Disabled Peoples Federation

Fijian Womens Crisis Centre

Save the Children

FEMLink

Empower Pacific

Other CSOs and Faith-Based Organisations

The Protection Cluster goal is to preserve the well-being and dignity of families and children affected by the disaster with effective protection from violence, abuse and exploitation (and extended trauma). Among other things, the Cluster will: engage national and international protection partners in the effective collaboration and coordination of the protection sector response  
assess and monitor child protection needs and carry out awareness raising and prevention activities to protect affected families and children from violence, abuse, and exploitation, and  
initiate family tracing mechanisms and provide (as needed) psycho-social support and protection services through the establishment of Child Friendly Spaces.  
Are the suggested Lead and Co-Lead appropriate? Are all the Key Partners listed?  
Is the Goal OK?

# Initial Cluster Contact List (needs updating)

## Health

MOH [etora@govnet.gov.fj](mailto:etora@govnet.gov.fj)  
MOH [josefa.koroivueto@health.gov.fj](mailto:josefa.koroivueto@health.gov.fj)  
MOH [ateca.kama@yahoo.com](mailto:ateca.kama@yahoo.com)  
MOH [vimal24deo@yahoo.com](mailto:vimal24deo@yahoo.com)  
MOH [fijimoheoc@gmail.com](mailto:fijimoheoc@gmail.com)

## WASH

Health [una.bera@health.gov.fj](mailto:una.bera@health.gov.fj)  
WAF [inakautoga@waf.com.fj](mailto:inakautoga@waf.com.fj)  
SOPAC [kamal@sopac.org](mailto:kamal@sopac.org)  
DWS [yanuyanurua@govnet.gov.fj](mailto:yanuyanurua@govnet.gov.fj)  
FRC [youth@redcross.com.fj](mailto:youth@redcross.com.fj)  
WAF [ssoderberg@waf.com.fj](mailto:ssoderberg@waf.com.fj)

## Education

MOE [saimoni.waibuta@govnet.gov.fj](mailto:saimoni.waibuta@govnet.gov.fj)

## Shelter

IFRC [ysabeau.rycx@ifrc.org](mailto:ysabeau.rycx@ifrc.org)

## Food Security

Agriculture [pauliasi.tuilau@agriculture.gov.fj](mailto:pauliasi.tuilau@agriculture.gov.fj)  
ADRA

## Protection

Social Welfare [govind.sami@govnet.gov.fj](mailto:govind.sami@govnet.gov.fj)  
Foreign Affairs [sakiusa.rakai@govnet.gov.fj](mailto:sakiusa.rakai@govnet.gov.fj)  
NFA [stovalelevu.nfa@gmail.com](mailto:stovalelevu.nfa@gmail.com)  
NFA [johnoc.nfa@gmail.com](mailto:johnoc.nfa@gmail.com)  
RFMF [mikawara@gmail.com](mailto:mikawara@gmail.com)  
POLICE [acoc@police.govnet.gov.fj](mailto:acoc@police.govnet.gov.fj)  
ST JOHN [stjohnamblance@connect.com.fj](mailto:stjohnamblance@connect.com.fj)

## Public Works

Public Works [manasa.lesuma@govnet.gov.fj](mailto:manasa.lesuma@govnet.gov.fj)  
Roads [mike.rudge@mwhglobal.com](mailto:mike.rudge@mwhglobal.com)  
FEA [akhtara@fea.com.fj](mailto:akhtara@fea.com.fj)  
Telecoms [rohan.mail@tfl.com.fj](mailto:rohan.mail@tfl.com.fj)  
Corrections [ifereimi.vasu@govnet.gov.fj](mailto:ifereimi.vasu@govnet.gov.fj)

## Logistics

[ablake@actforpeace.org.au](mailto:ablake@actforpeace.org.au)  
[logistics.neoc@gmail.com](mailto:logistics.neoc@gmail.com)

## Coordination

[muller2@unocha.org](mailto:muller2@unocha.org)