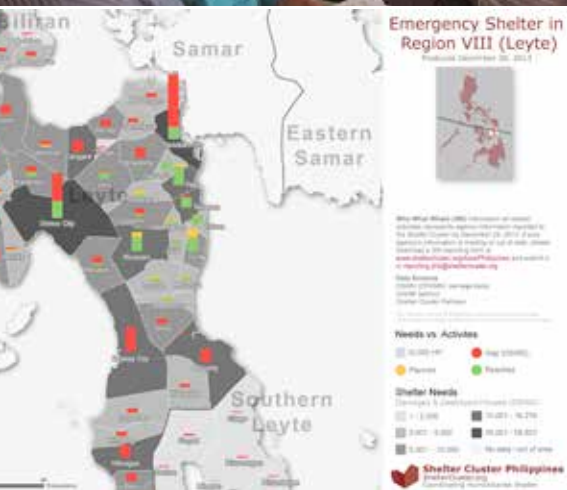


Master
level short
course

Professional postgraduate course in Shelter Coordination in Natural Disasters

Course length:	5 weeks online followed by 6 day face-to-face
Course fee:	1,600 CHF per participant
Mode of delivery:	Blended learning: online and face-to-face
Award received:	Certified Masters-level credit rated course (10 Level M credits- CATS equivalent 5 ECTS- European credits)
Audience:	Red Cross and Red Crescent National staff and volunteers IFRC and ICRC staff Other humanitarian professionals



Overview

The International Federation of Red Cross and Red Crescent Societies (IFRC) in partnership with the Centre for Development and Emergency Practice (CENDEP) at Oxford Brookes University is proud to offer an affordable professional postgraduate course in Shelter Coordination in Natural Disasters. The course faculty is comprised of leading experts from around the humanitarian and shelter world presenting practical insight into the course content thus providing students with case studies drawn from major humanitarian emergencies. The course is accredited by Oxford Brookes University.



International Federation
of Red Cross and Red Crescent Societies
www.ifrc.org Saving lives, changing minds.

In partnership with

OXFORD
BROOKES
UNIVERSITY

About the course

This course aims to equip participants with the skills required to coordinate a shelter response in a humanitarian crisis after natural disasters. It will provide participants with an overview of the humanitarian reform process and the transformative agenda, the interagency cluster approach, the role of the Shelter Cluster and the principles and practice of shelter coordination in natural disasters. This course covers the following topics that will be delivered through the online and face-to-face components:

- The Humanitarian Reform process and the Transformative Agenda
- The cluster approach and the Shelter Cluster
- IFRC methodology for shelter coordination at the country level
- Fundamentals of shelter response programming and minimum standards
- Inter-agency disaster response appeal and financing mechanisms
- Inter-agency coordinated assessments
- Information Management
- Inter-agency shelter response and advocacy strategies
- Leadership and coordination skills
- Inter-cluster coordination
- Core cluster functions

Learning objectives

Overall Objective: At the end of the course, students will have acquired strategic and practical knowledge of shelter coordination policies, methods, tools and procedures in the humanitarian response system and are prepared to apply these in the context of a natural disaster.

1. Demonstrate a depth of knowledge of the main foundations, principles, processes, and complexity of humanitarian shelter coordination in natural disasters.
2. Develop an inter-agency shelter response and advocacy strategy, using current humanitarian shelter and settlements standards, principles, and approaches.
3. Effectively participate in shelter coordination teams in response to natural disasters at the country level, utilizing the most current knowledge, tools, and good practices at the forefront of the discipline.
4. Apply leadership and coordination skills effectively and appropriately to a professional standard for different audiences in the field of humanitarian practice.

Course details – Online and face-to-face components

This course is a blend of theory and practical learning which will equip participants with skills and competencies in shelter coordination in the context of a natural disaster. Participants are introduced to sector-specific information and given practical opportunities to apply the theory in scenarios that are the basis of the assessments. The scenario takes the form of a challenging simulation which allows participants to experience working at the centre of the coordination activities during a humanitarian response.

The course has two phases:

1. First phase – Tutored distance learning

This will take place during a period of five weeks and participants will study through the online Red Cross Red Crescent e-learning platform. This first phase deals with most of the theoretical basis of the course.

2. Second phase – A 6-day face-to-face workshop

This is delivered by specialists working in the sector and guest speakers with experience of coordination in practice at field level. Participants engage in a combination of individual and group activities. The face-to-face workshop is based on a scenario that simulates the deployment to and coordination of an evolving emergency.

“Overall the training was great! Sufficient materials, interesting topics, and a variety of useful exercises to apply our new knowledge.”

Course methodology

The factual knowledge and understanding in phase 1 (tutored distance learning component) is brought in to context in phase 2 (face-to-face workshop) and applied to case studies and to simulations of likely situations. Participants in phase 2 are asked to use judgement and analytical skills to develop an inter-agency shelter response and advocacy strategy, using current humanitarian shelter and settlements standards, principles, and approaches. They are asked to synthesise a response to a likely scenario based on their knowledge and understanding.

Participants will be able to engage fully with the course content and with their peers via lectures, discussion boards, group work, online and face to face chat, question and answer sessions with the tutors and through the provision of feedback and assessment by tutors and other peers.

Course assessment

The assessment pattern reflects the course's learning outcomes and is intended to demonstrate that participants possess the skills and knowledge required in practice.

Knowledge will be tested through the completion of a piece of coursework such as oral presentations, report writing, teamwork, problem solving, data analysis and research. Coursework involves a variety of different methods of assessment, including:

- Short paper and report writing
- Individual test
- Group presentations
- Personal attendance and completion of both the online component and the face-to-face workshop.

Participants will also receive feedback and guidance throughout the course which will enable them to progress and develop their confidence and analytical skills.

Course faculty

This course is taught by a prestigious group of professionals with proven track records and active participation in the field of international cooperation including first-hand knowledge of shelter coordination responses in recent emergencies. The course also includes presenters and resource persons from leading humanitarian shelter agencies including the United Nations, International Non-Governmental Organisations and the Red Cross Red Crescent Movement.

Course directors:

Pablo Medina – Deputy Coordinator,
IFRC Shelter Cluster

**Neil Bauman – Global focal Point for
Information Management,** IFRC Shelter
Cluster

**Marta Peña – Focal point for operations
support and capacity building,** IFRC Shelter
and Settlements

“Having the online module prior to the practical component provides a good introduction and basis on which to prepare (for) the residential component!”

Practical information on how to apply

1

Entry requirements

Applications are welcome from individuals working in the humanitarian and shelter sectors for the Red Cross and Red Crescent Movement, United Nations agencies or Non-Governmental Organisations, or Governments, particularly agencies or institutions actively involved in the interagency shelter cluster at global or country level. The course is also open to individuals seeking to advance their understanding of and expertise in the field of interagency, humanitarian coordination.

This course is demanding in terms of time and commitment. The estimated amount of participant effort hours to complete the course is 100 hours. Before you apply, please consider carefully whether you can commit the necessary time in order to complete the course. Where appropriate, please make sure you obtain the endorsement of your supervisor to participate in this programme.

2

English language

The language of instruction is English. Applicants whose first language is not English will be requested to provide a demonstration of competence in spoken and written English through a Certificate of Competence from the local office of the British Council or take the Test of English as a Foreign Language (TOEFL) demonstrating a minimum recommended score of 575. Where an applicant has not taken TOEFL, a clear statement from the employer (via their reference) will be accepted as evidence of the applicant having an appropriate standard of English Language. Among other things, this statement must confirm that the applicant's job has involved working substantially through the medium of English.

3

How to apply

Applications must be submitted online via the following link:

<https://www.surveymonkey.com/s/SCT11-2014>

Any additional inquiries can be addressed by email to:

marta.pena@ifrc.org or pablo.medina@ifrc.org

The IFRC Learning Education and Training (LET) Hub also offers a range of other [Certified Professional Training](#) opportunities in Global Health, Disaster Management, Humanitarian Diplomacy and Social and Voluntary Sector Leadership.

For more information on these and other LET Hub programmes including our flagship Learning Platform programme which contains hundreds of short, free, self-directed courses supporting the development of basic skills and competencies, please visit us online at www.ifrc.org/learning

“Well organized and team spirit worked very much towards achieving learning objectives for the diversified people around the world engaged in shelter process.”