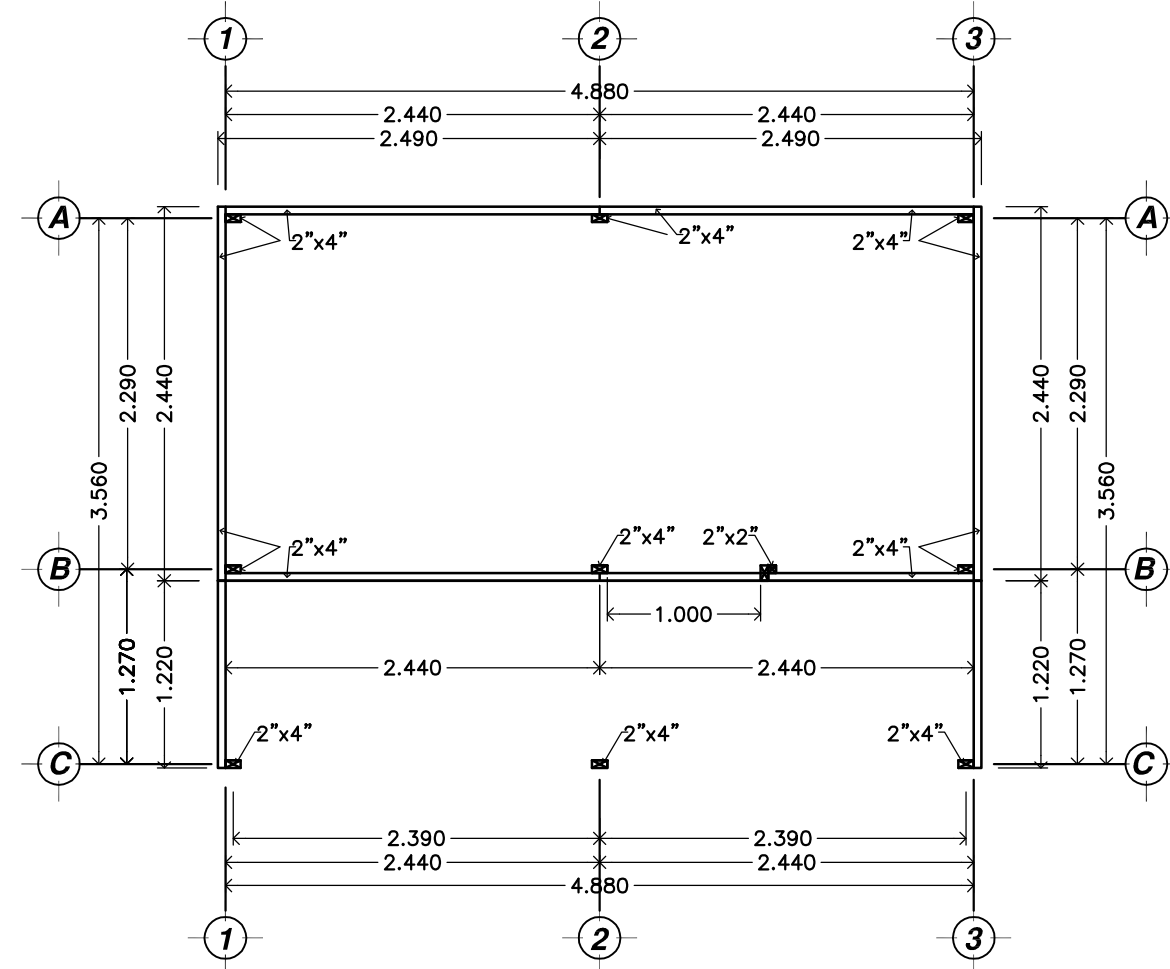
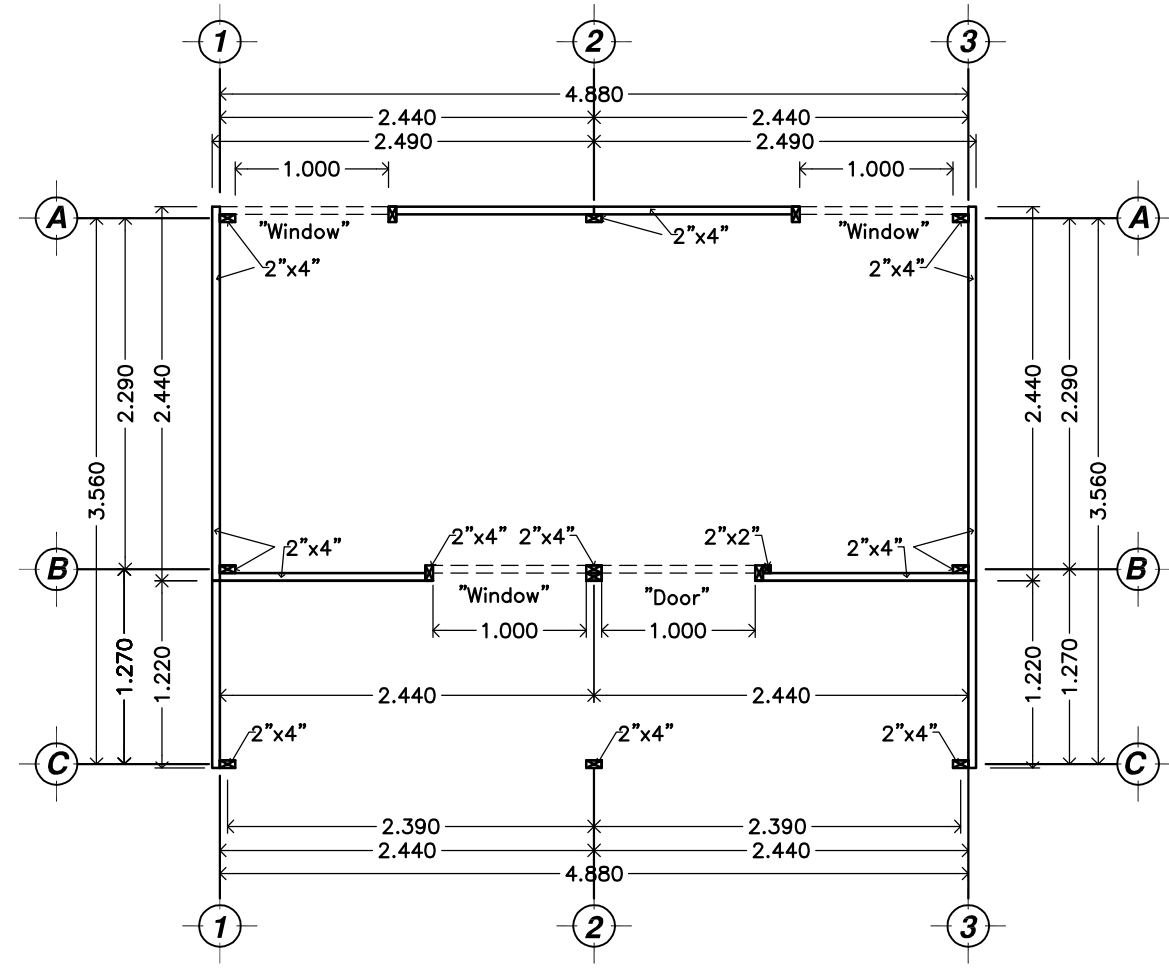


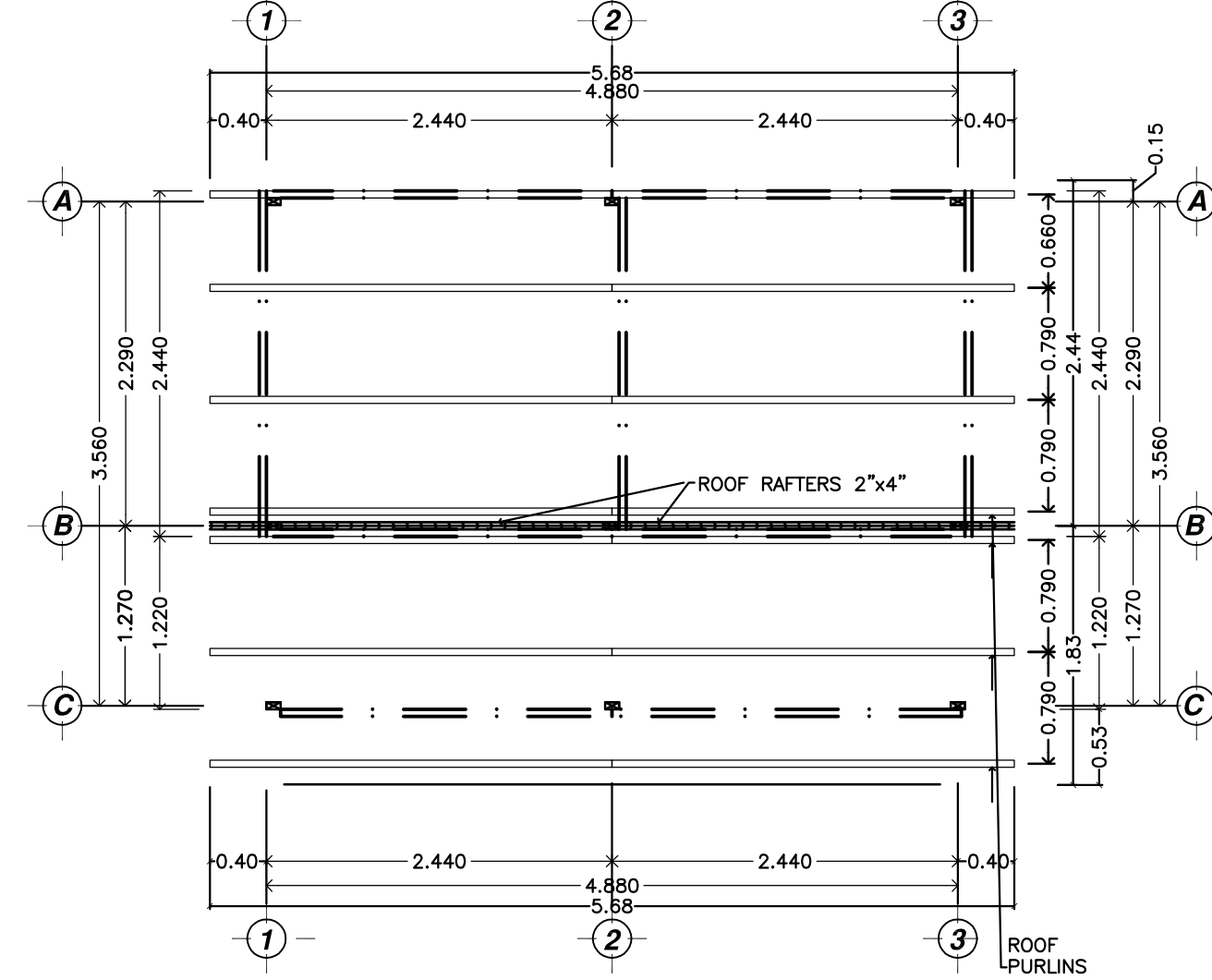
PLANTA ARQUITECTONICA FOUNDATION PLAN
ESCALA/SCALE: 1:50



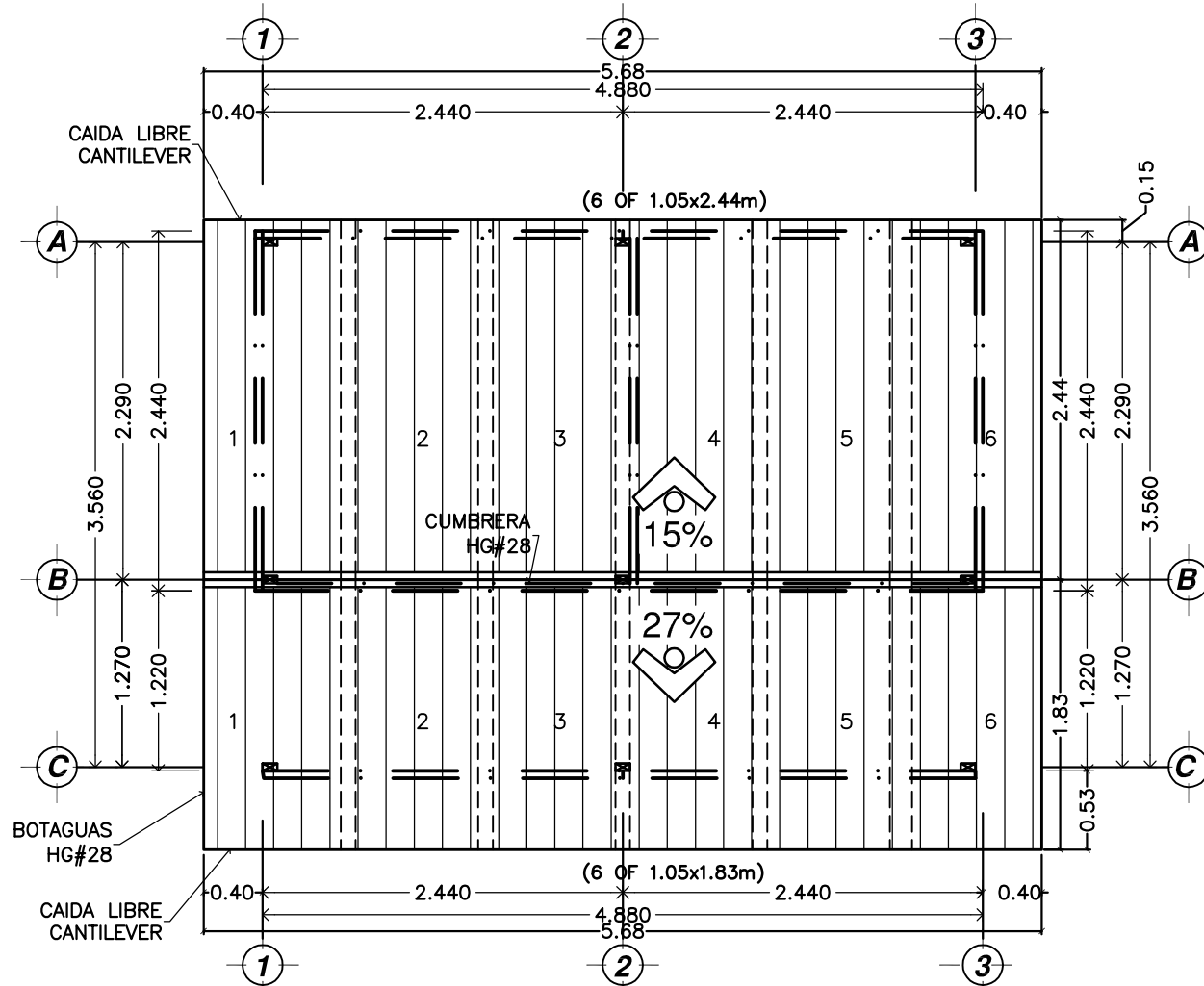
PLANTA ARQUITECTONICA ARCHITECTURAL FLOOR PLAN
NIVEL 0+0.00 ESCALA/SCALE: 1:50



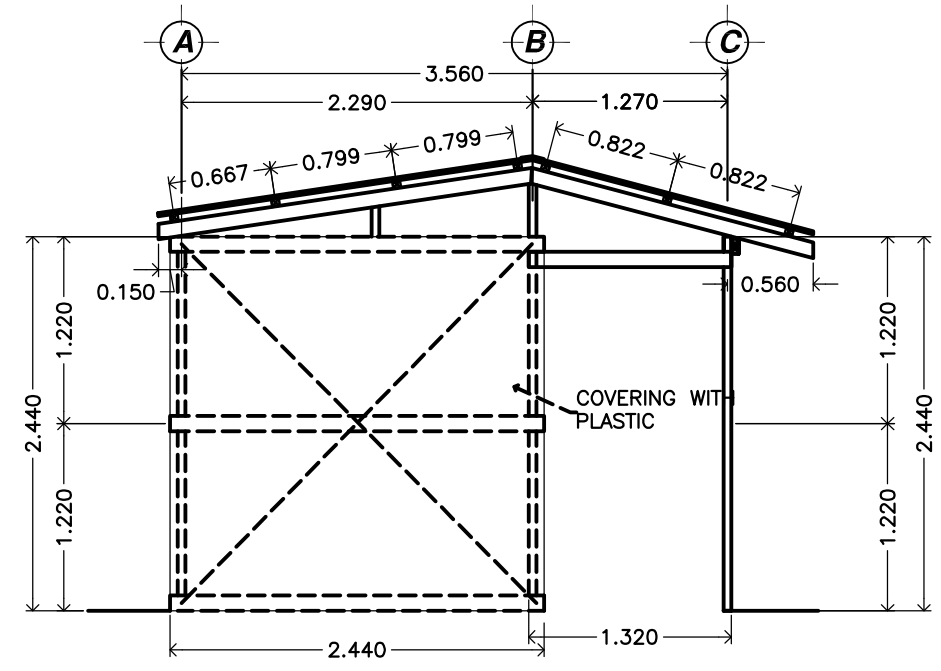
PLANTA ARQUITECTONICA ARCHITECTURAL FLOOR PLAN
NIVEL VENTANAS LEVEL WINDOWS ESCALA/SCALE: 1:50



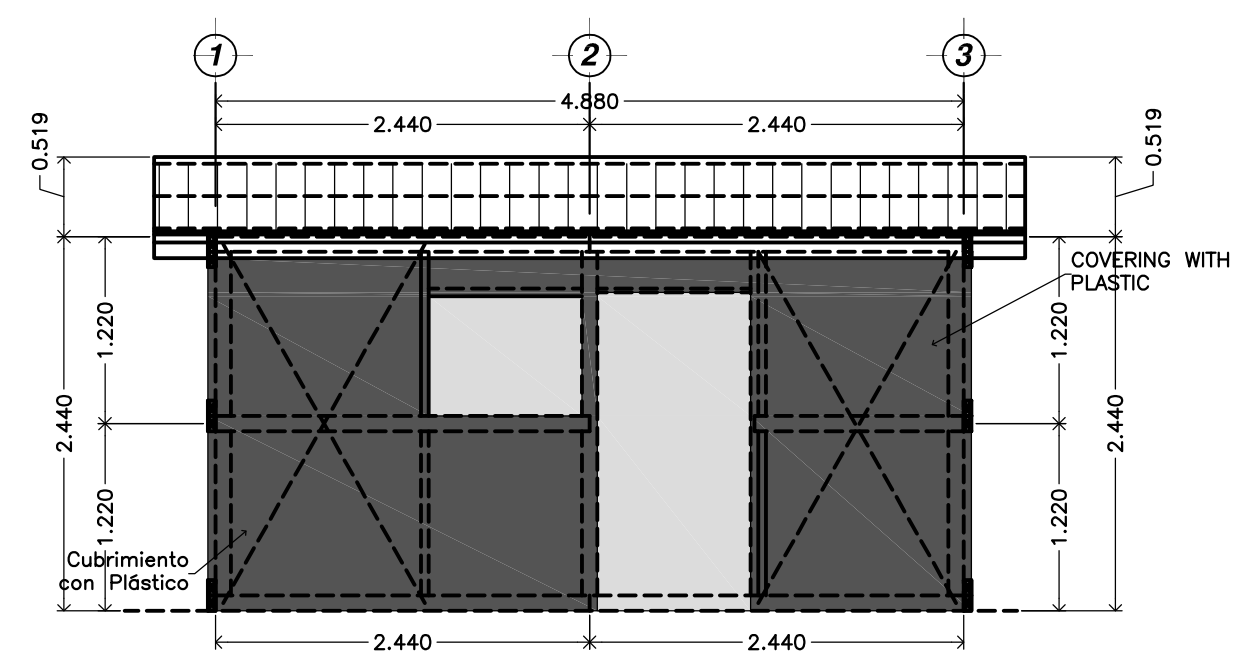
PLANTA ESTRUCTURAL TECHOS STRUCTURAL ROOF PLAN
ESCALA/SCALE: 1:50



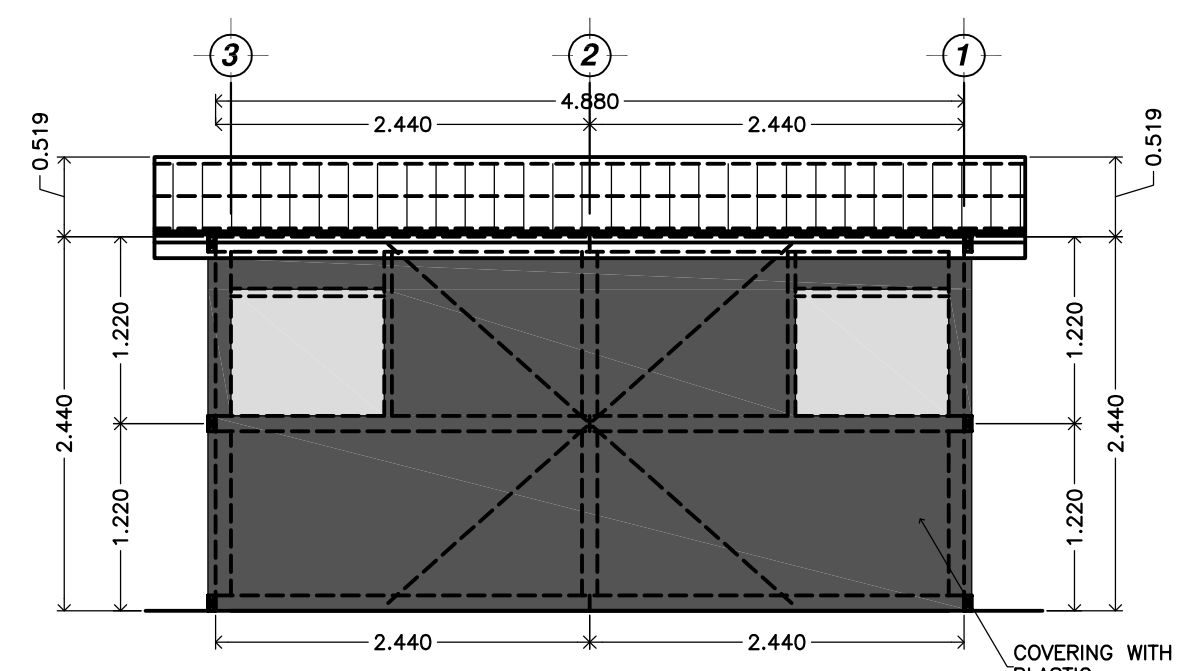
PLANTA DE TECHOS ROOF PLAN
ESCALA/SCALE: 1:50



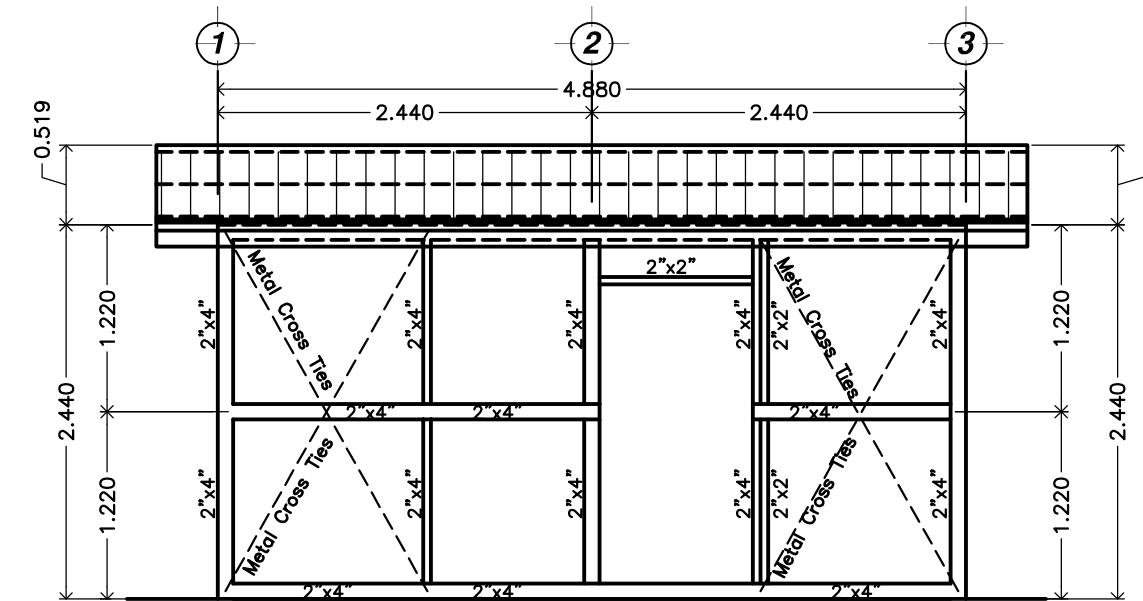
VISTA LATERAL LATERAL ELEVATION
ESCALA/SCALE: 1:50



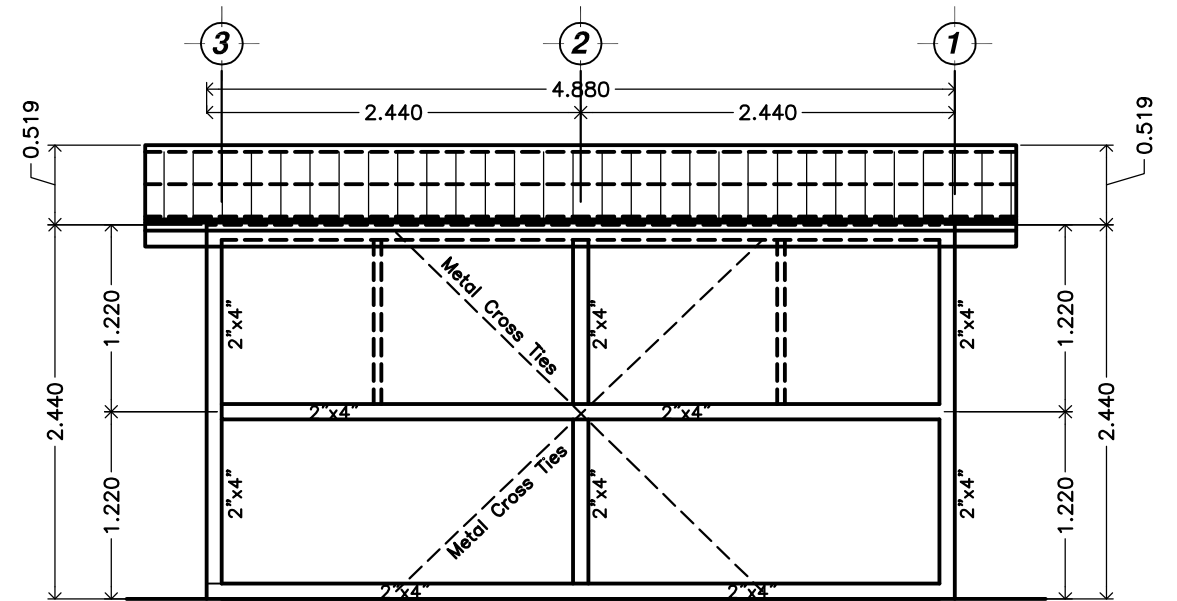
VISTA FRONTAL FRONT ELEVATION
ESCALA/SCALE: 1:50



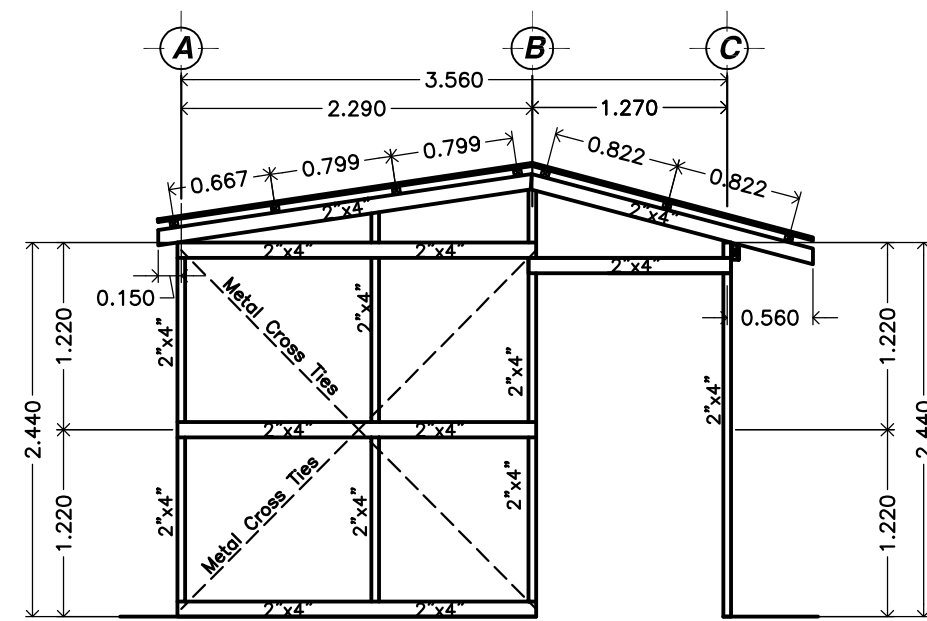
VISTA POSTERIOR REAR ELEVATION
ESCALA/SCALE: 1:50



VISTA FRONTAL FRONT ELEVATION
ESCALA/SCALE: 1:50



VISTA POSTERIOR REAR ELEVATION
ESCALA/SCALE: 1:50



VISTA LATERAL LATERAL ELEVATION
ESCALA/SCALE: 1:50

Metal Cross Tie Notes:
1. The metal cross ties are to be 1" wide and 2mm thick Simpson metal ties or similar.
2. The installation locations are as indicated in the elevations.
3. Attach the metal cross to the wood frame structure with 8 - 600MPa 2.65mm diameter nails in order to develop full capacity.

Window and Door Panel Notes
1. Window panels are 3'-3 3/4" (1.0m) square, outside measure. Material is 2 x 2 SPF. Each corner is secured with a single 8d 3 1/2" nail and a (S/H 2.5) tie, using (4) 6d, 2" nails at each tie. Two steel strips (CS-14) are nailed from the top-center to the lower corners. The window panel is secured to the frame with two single 10d, 4" nails placed 4" down from the top of the frame on each side. The nails serve as a pivot hinge. A 3" slide bolt is installed at the bottom of the window. A 1/4" hole is drilled in the sill to accept the bolt.
2. The door panel is 3'-3 3/4" (1.0m) x 6' 7 1/2" (2.0m) outside measure. Material is 2 x 2 SPF. Each corner is secured with a single 8d 3 1/2" nail and a (S/H 2.5) tie, using (4) 6d, 2" nails at each tie. Two steel strips (CS-14) are nailed from the hinge-side center to the upper and lower corners. The door panel is secured to the frame with two single 10d, 4" nails placed 4" from the outside edge through the top and bottom rails. The nails serve as a pivot hinge. A 3" slide bolt is installed at the side of the door. A 1/4" hole is drilled in the jamb to accept the bolt.

General Notes
1. FOR SETTLEMENT OR CAMP SETTINGS, PROVIDE SITE, 45 sq. m per person, INCLUDING 'SHELTER PLOT, ROADS, FOOTPATHS, EDUCATIONAL FACILITIES, SANITATION, FIREBREAKS, ADMINISTRATION, WATER STORAGE, DISTRIBUTION AREAS, MARKETS AND STORAGE, PLUS LIMITED HOUSEHOLD GARDENS' [AND PLAYSPACE]
2. SHELTER SITE TO BE DRY, ABOVE SURROUNDING GROUND BY A MINIMUM OF 0.3 M. AND LEVEL WITHIN 0.1 M.
3. SHELTER COVERED AREA 3.5 SQUARE METERS PER PERSON (SPHERE MIN. STANDARDS)
4. WRAP STRUCTURE WITH REINFORCED PLASTIC FABRIC
5. USE SIMPSON HURRICANE CLIPS AT ALL JOINTS.
6. METAL TIE STRAPS TO CONNECT FROM SILL PLATE TO TOP PLATE, AS SHOWN IN ELEVATION DRAWINGS.

Application of Tarpaulin to Frame
1. Lay tarpaulin on flat ground.
Fold to required full height of wall.
Roll tarp around a 2 x 2, 9 feet long.
Apply tarp to wood frame with 3/4" staples, placed 3 to 4" on center.
Start at top plate, outside corner.
Work down to bottom plate.
Unroll gradually, stapling horizontally, top first, then mid-rail, then bottom sill.
Stretch down and across as fabric is fastened to the frame.

Plans, Elevations & Details

Project Number Wood T 001.01

Date Issue Date

Drawn by Chris Blackard

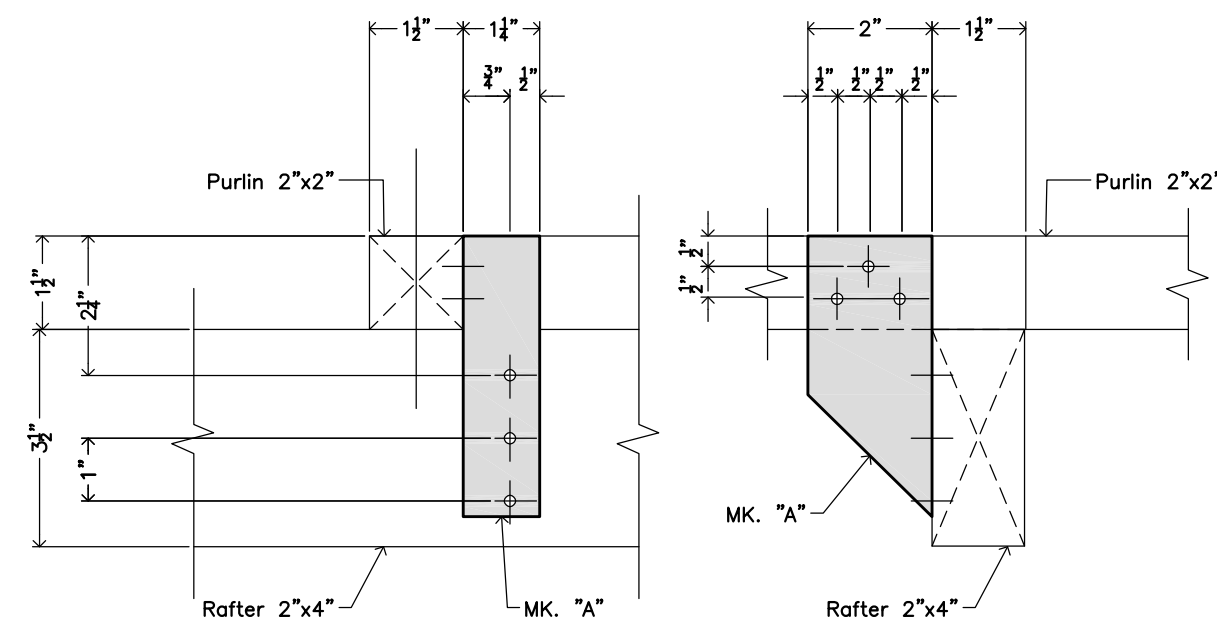
Approved by Mario Flores

Scale - As Noted

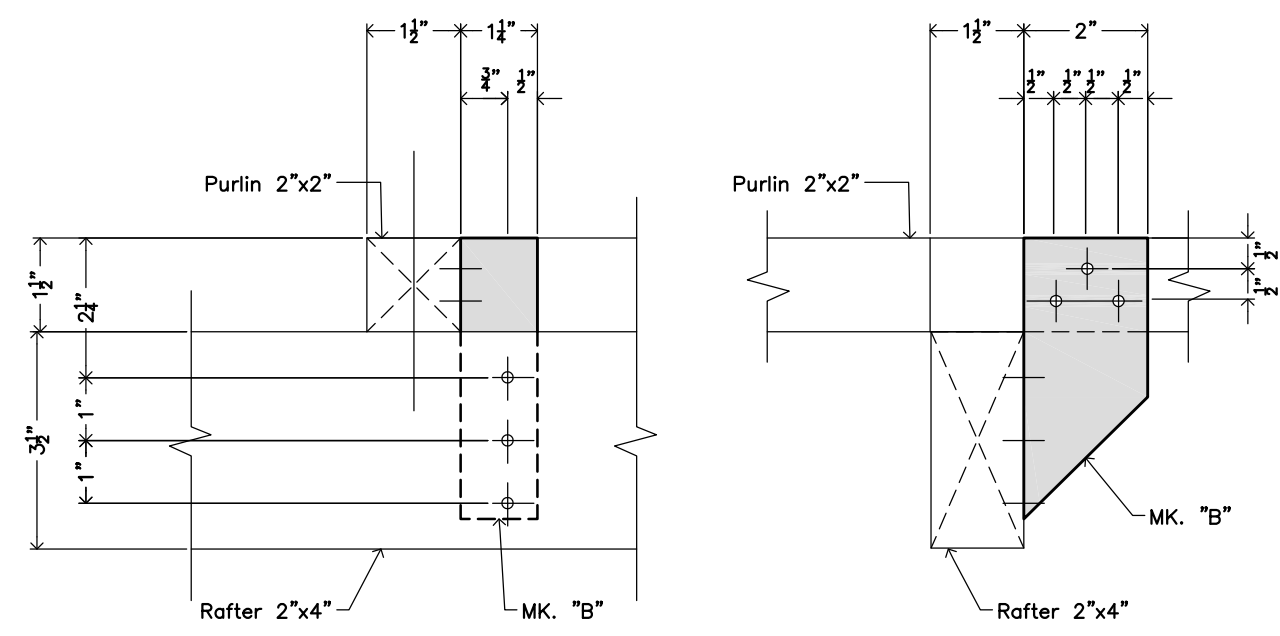
Wood Frame T-Shelter



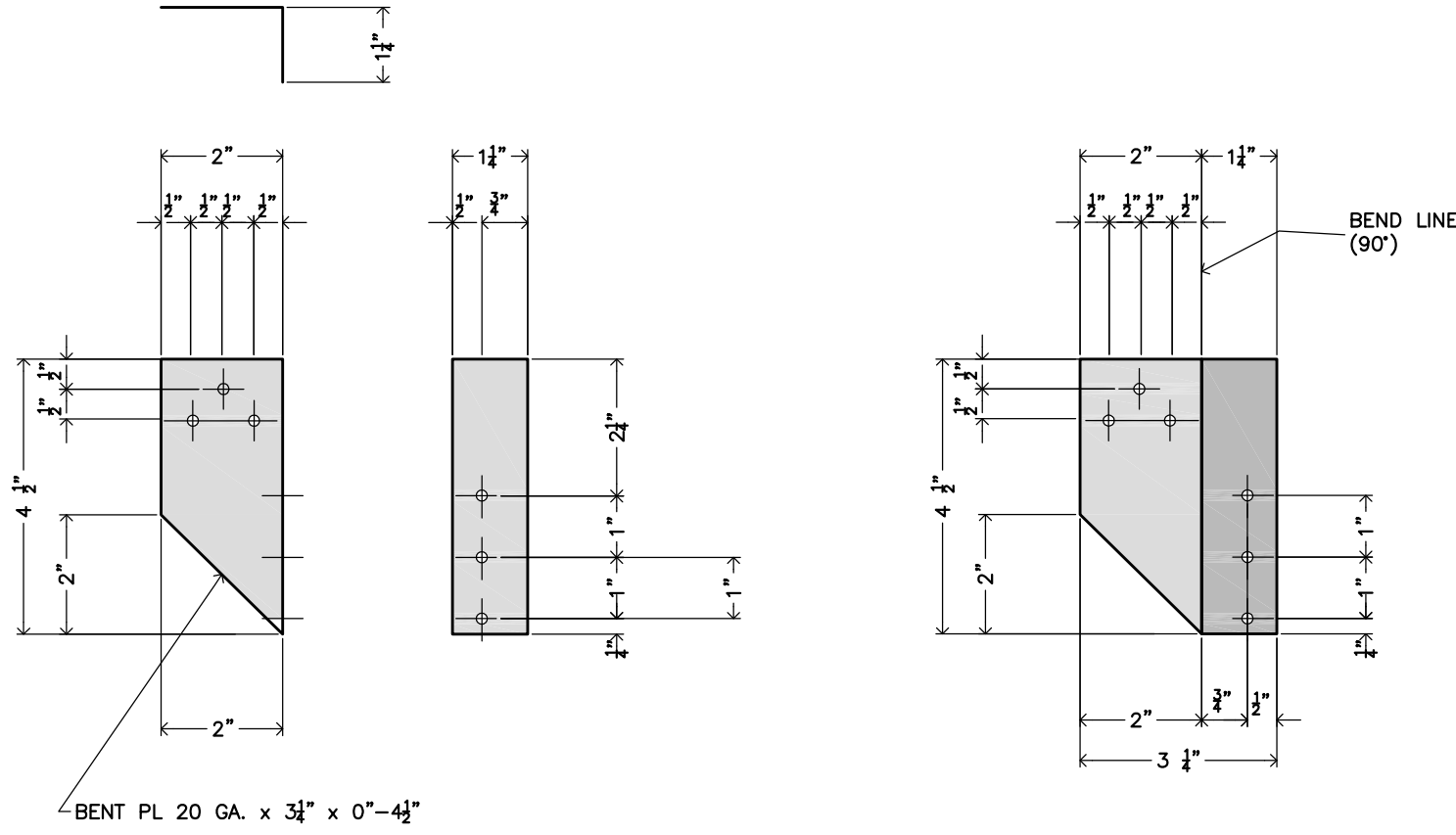
www.habitat.org



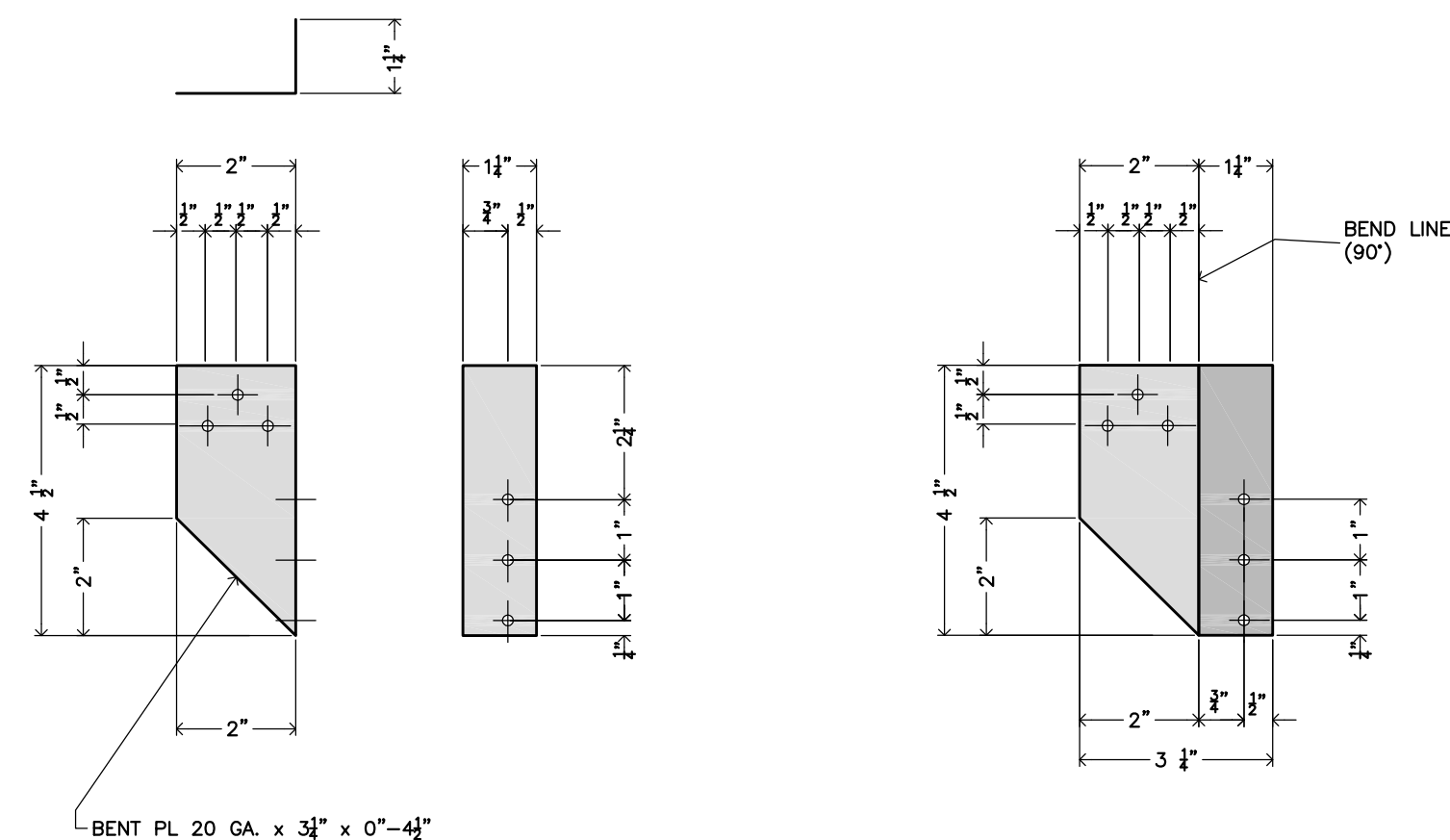
PURLIN TO RAFTER CONNECTION (LEFT SIDE)
ELEVATION
SIN ESCALA/WITHOUT SCALE



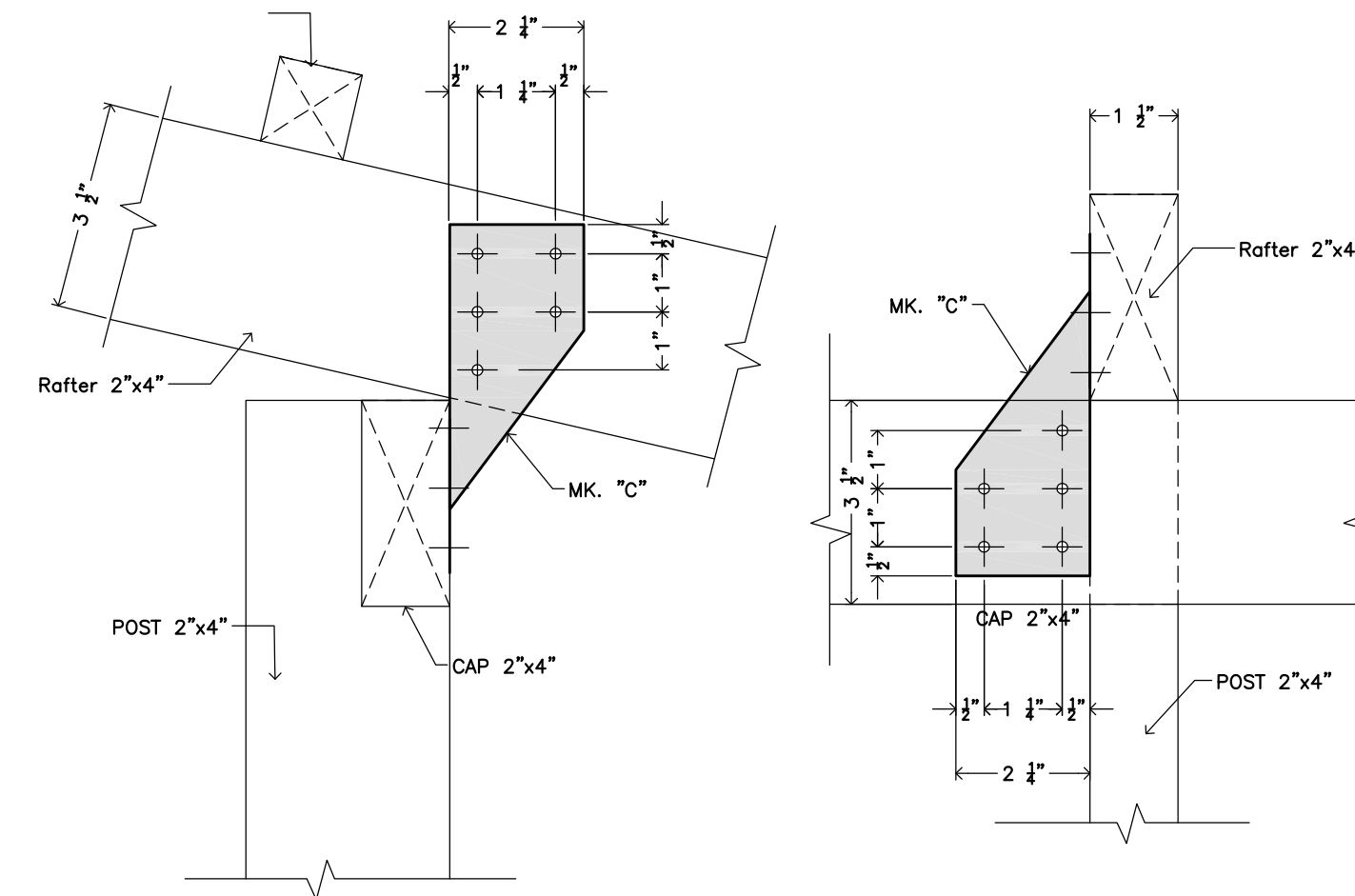
PURLIN TO RAFTER CONNECTION (RIGHT SIDE)
ELEVATION
SIN ESCALA/WITHOUT SCALE



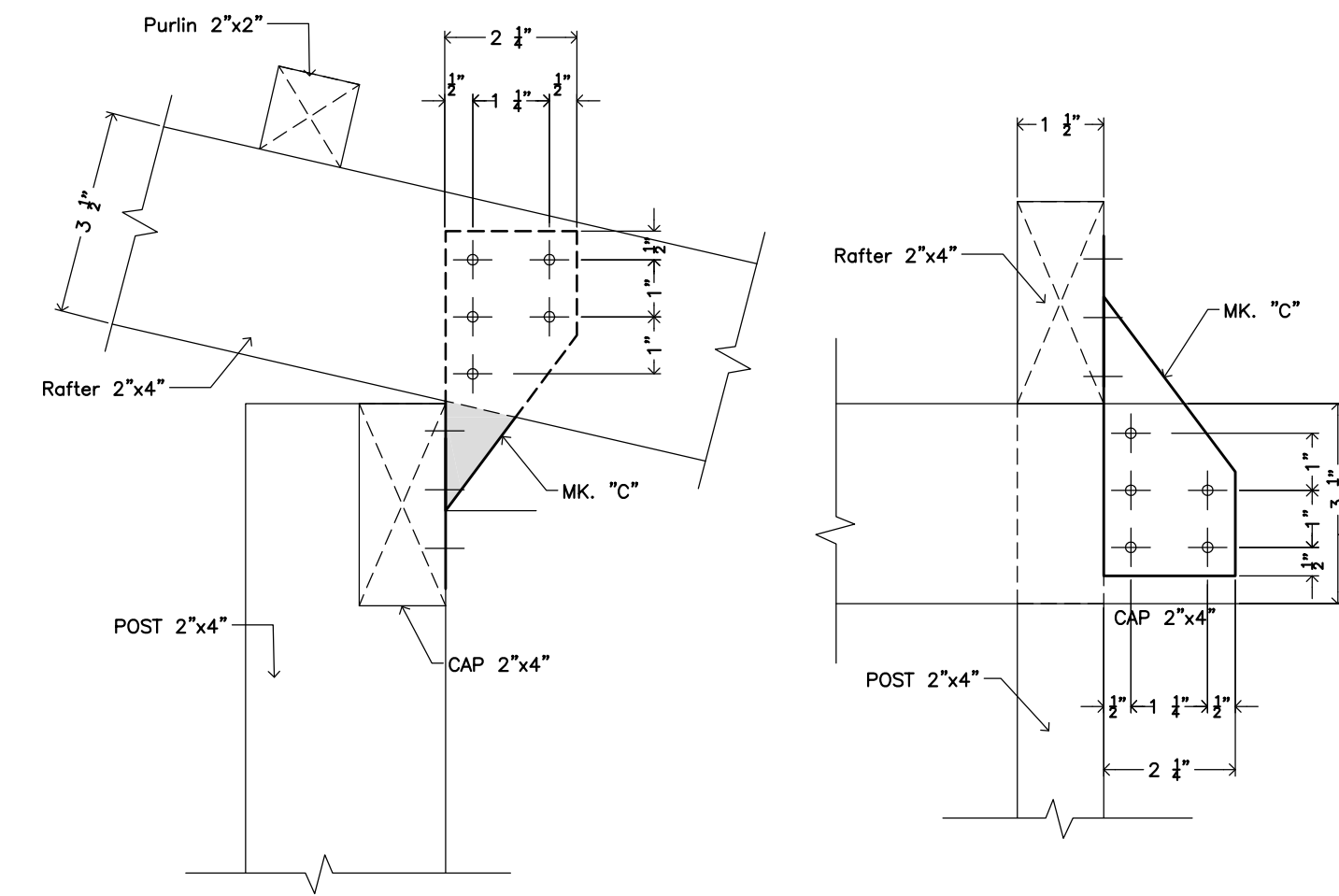
HURRICANE TIE-MK "A"
FABRICATION DETAIL
MK "A" (DEVELOPED)
(SAME AS MK "B")
SIN ESCALA/WITHOUT SCALE



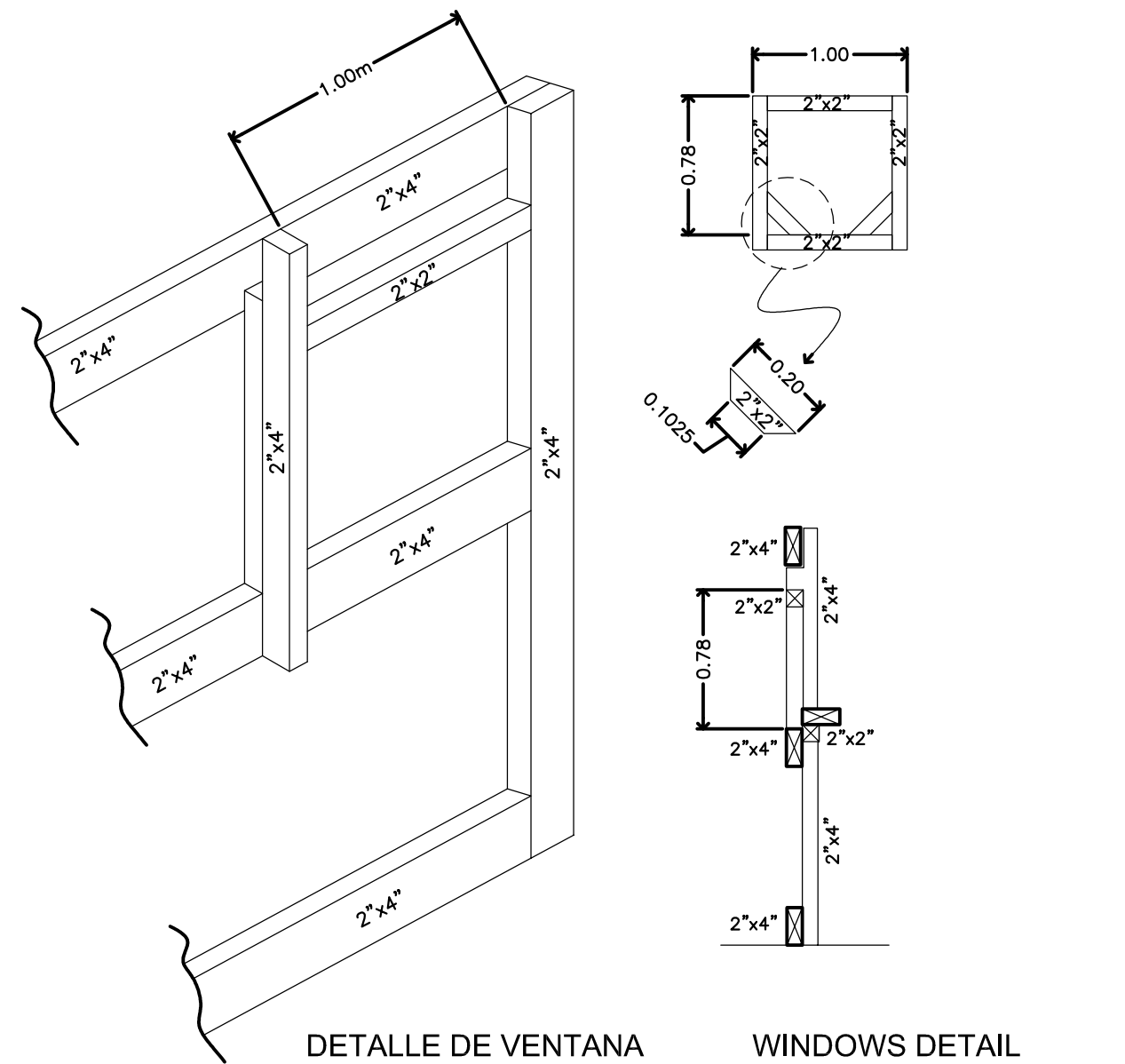
HURRICANE TIE-MK "B"
FABRICATION DETAIL
MK "B" (DEVELOPED)
(SAME AS MK "A")
SIN ESCALA/WITHOUT SCALE



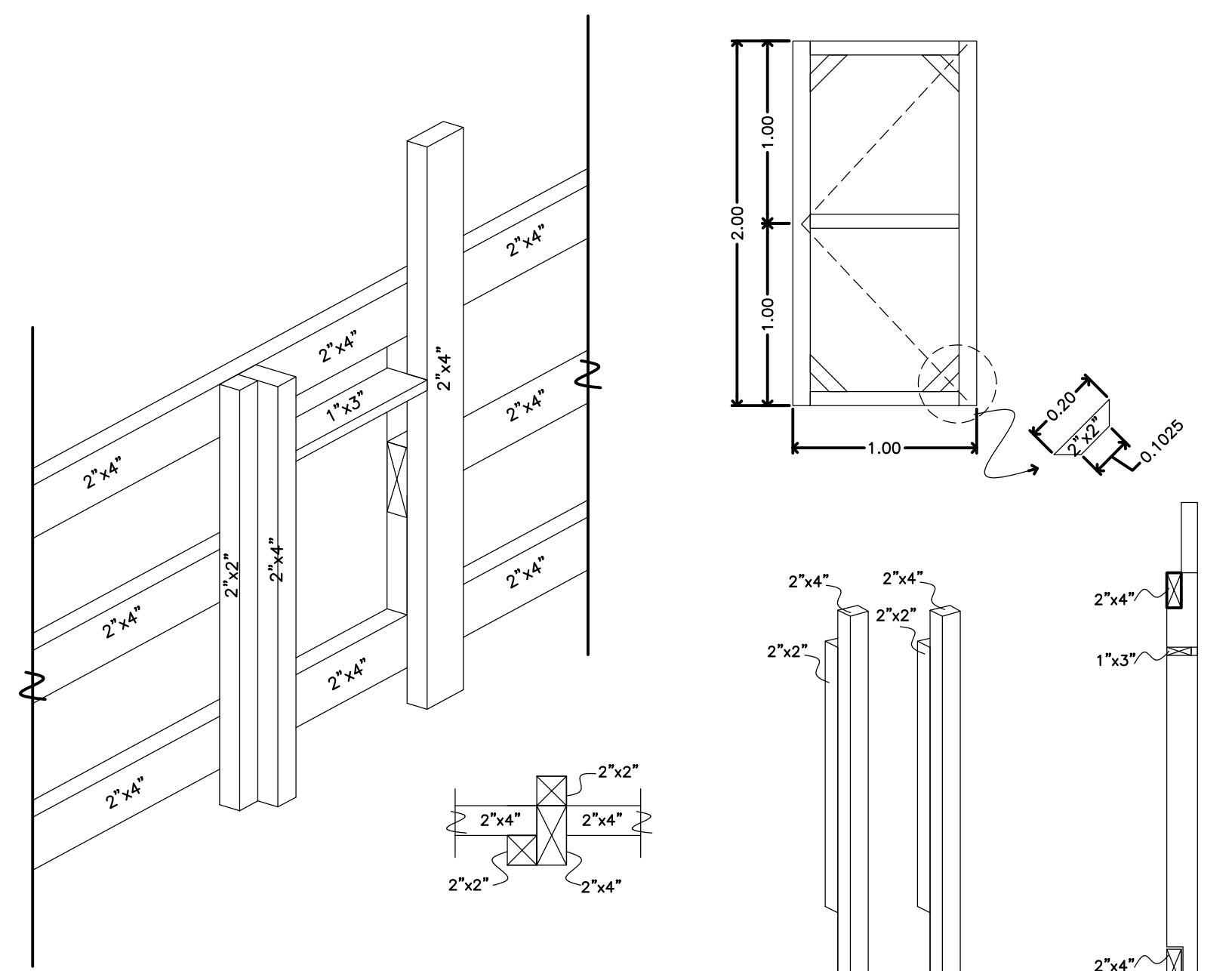
CAP TO RAFTER CONNECTION (LEFT SIDE)
ELEVATION
SIN ESCALA/WITHOUT SCALE



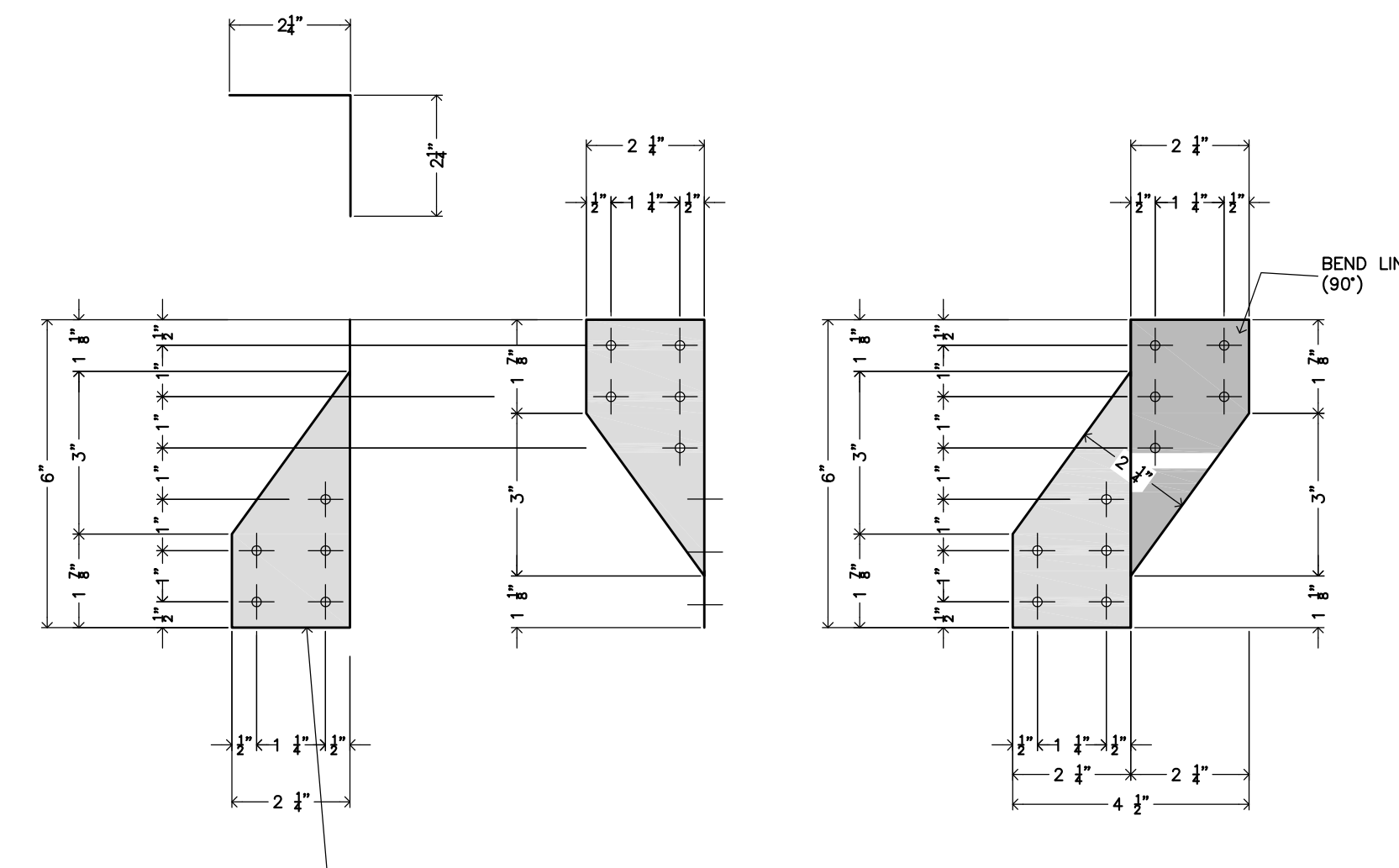
CAP TO RAFTER CONNECTION (RIGHT SIDE)
ELEVATION
SIN ESCALA/WITHOUT SCALE



DETALLE DE VENTANA
WINDOWS DETAIL
SIN ESCALA/WITHOUT SCALE



DETALLE DE PUERTA
DOORS DETAIL
SIN ESCALA/WITHOUT SCALE



HURRICANE TIE-MK "C"
FABRICATION DETAIL
MK "C" (DEVELOPED)
SIN ESCALA/WITHOUT SCALE

Connection Details

Project Number	Wood T 001.01
Date	Issue Date
Drawn by	Chris Blackard
Approved by	Mario Flores
Scale - As Noted	

A102

Wood Frame T-Shelter



www.habitat.org