

Housing, Land and Property

Top Ten Resources for Shelter Actors



The **HLP Top Ten for Shelter actors** provides a list of relevant humanitarian standards and operational guidance to inform shelter responses in humanitarian emergencies. For more thematic guidance and country-specific resources on housing, land and property, please visit the [HLP Essential Guidance and Tools](#) page on the Global Protection Cluster website.

[Handling Land: Innovative Tools for Land Governance and Secure Tenure](#) 2012

This book illustrates how the Global Land Tool Network is setting an international agenda on land through a global network of partners. GLTN is developing a set of “land tools” that are practical ways to solve problems in land administration and management, and that are affordable and capable of being scaled up to be used in the whole country.

Points of Interest for Shelter Actors

Chapter 9 of this book (beginning on p. 103) looks at security of tenure in disasters and conflict. The chapter provides guidelines for dealing with land after a crisis, and presents a list of new approaches to land issues in crisis contexts. The chapter concludes with case studies and a look at the next steps for security of tenure in disasters and conflict.



Sustainable Reconstruction in Urban Areas

A Handbook

UN HABITAT
FOR A BETTER CITY
skat
Sustainable Reconstruction
in Urban Areas

[Sustainable Reconstruction in Urban Areas: A Handbook](#) 2012

This handbook provides step-by-step guidance on how to design and implement housing reconstruction programmes in emergency-affected cities. It also describes the specific urban dimensions of reconstruction and re-housing strategies, providing context-based options that have proven successful in recent disasters.

Points of Interest for Shelter Actors

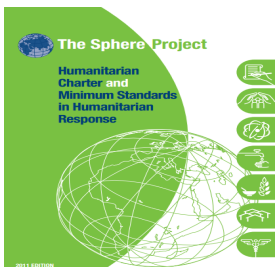
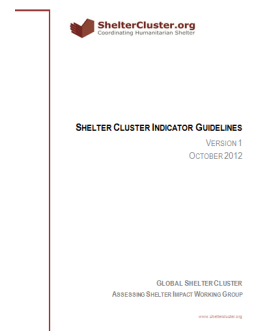
Section 1.4 provides in-depth guidance on considerations that should be made towards land and tenure while performing a needs assessment and analysis. Section 4.4 and 4.5 provide a list of HLP sensitive considerations related to selecting land to construct upon.

[Shelter Cluster Indicator Guidelines \(Version 1\)](#) 2012

These guidelines are a first step towards making the process of measuring the progress, outcomes, and impact of the emergency shelter response a more standardised and systematic one. Standardised indicators enable data reported by country-level shelter cluster stakeholders to be both comparable and informative to the reporting objectives of the cluster as a whole.

Points of Interest for Shelter Actors

The guidelines include HLP indicators for shelter needs assessment and for monitoring shelter responses in humanitarian emergencies. HLP needs outputs and outcomes indicators broadly cover three areas; security of tenure, restoration of land rights and land records and land administration.



[Sphere Handbook](#) 2011

The handbook on the Humanitarian Charter and Minimum Standards in Humanitarian Response, is internationally recognized sets of common principles and universal minimum standards in all sectors and dimensions of humanitarian response.

Points of Interest for Shelter Actors

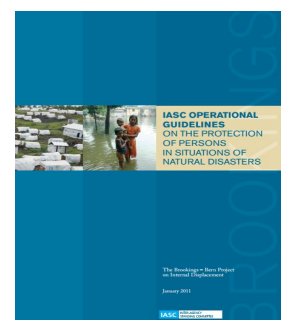
Page 243 of the handbook discusses the concept of the right to adequate housing in disaster responses. Page 255 of the Handbook contains a section on HLP ownership, rights and usage.

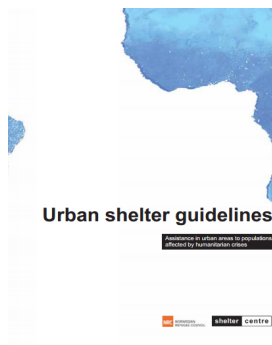
[Operational Guidelines on the Protection of Persons in Situations of Natural Disasters](#) 2011

These IASC Operational Guidelines primarily aim to help international and non-governmental humanitarian actors to ensure that disaster relief and recovery efforts are conducted within a framework that protects and furthers human rights of affected persons.

Points of Interest for Shelter Actors

The third section of the guidelines has a specific focus on the protection of housing, land and property rights. Pages 39-41 lists key considerations and measures related to housing, property and possessions, as well as for transitional shelter, housing and evictions.





Urban Shelter Guidelines 2010

These guidelines aim to support shelter actors in: defining and targeting the affected urban population; using and combining the 18 assistance methods; and deciding on applicable humanitarian standards. The guidelines also provide an overview of available profiling methods, assessment tools and handbooks, and of key housing, land and property issues.

Points of Interest for Shelter Actors

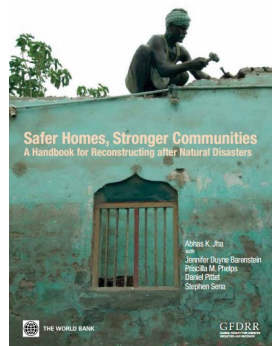
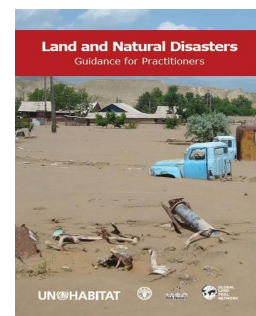
Page 22 of the guidelines outlines of HLP issues related to the implementation of urban shelter projects. Page 100 features a case study in Lebanon, on multi-storey reconstruction and disputed land tenure. Appendix F on page 158 features a short list of basic principles on Shelter and

Land and Natural Disasters: Guidance for Practitioners 2010

This handbook provides a holistic approach to addressing land issues from the aftermath of a natural disaster through early recovery and reconstruction, and includes several country examples.

Points of Interest for Shelter Actors

Chapter 4 of the handbook includes a specific section on land and emergency shelter (page 50-59). The handbook also includes a chapter on land as a cross-cutting issue (page 76-100), covering the following themes; security of land tenure, land and the landless, land administration systems, land use and settlement planning and land for relocation and infrastructure.



Safer Homes, Stronger Communities: A Handbook for Reconstructing after Natural Disasters

2010 —This handbook was developed to strengthen policy making and programming on post-disaster reconstruction with the view to strengthen and increase the resilience of communities affected by natural disasters.

Points of Interest for Shelter Actors

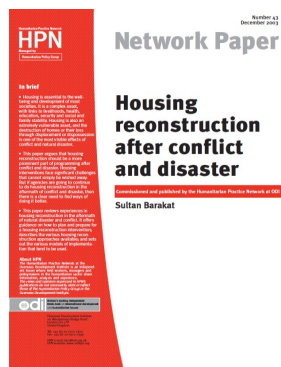
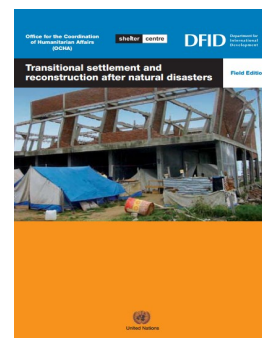
Chapter 4 on the social dimension of housing reconstruction (page 59) states as a guiding principle that all categories of housing tenancy must be considered, provides a list of tenancy categories, and reviews issues related to beneficiary eligibility. Chapter 7 of this handbook (page 109) looks at 'Land Use and Physical Planning' and provides a glossary of key terms, key decisions, technical issues, risks and challenges, recommendations and five case studies.

Transitional Settlement and Reconstruction after Natural Disasters 2008

These are the revised 'Shelter After Disaster: Guidelines for Assistance', whose operational focus has been further enhanced to better support country level shelter responses.

Points of Interest for Shelter Actors

In chapter 1, Principles and Coordination (pages 2/3), highlight insecurity of tenure as a priority for shelter, settlement and reconstruction. Section 7.5 (page 224) focuses upon 'land use, planning and tenure'. This section sets out a step-by-step guide to ten activities that will assist land use, planning and tenure programmes after a rapid onset disaster, addressing three main issues: tenure security, disaster risk reduction and protection of the vulnerable.



Housing reconstruction after conflict and disaster 2003

This Humanitarian Practice Network paper reviews experiences in housing reconstruction in the aftermath of natural disaster and conflict. It offers guidance on how to plan and prepare for a housing reconstruction intervention; describes the various housing reconstruction approaches available; and sets out the various models of implementation that tend to be used.

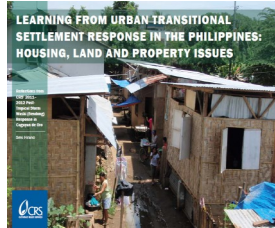
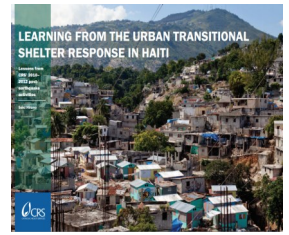
Points of Interest for Shelter Actors

The papers looks (pp. 10-13) into the HLP dimensions of targeting shelter assistance and the identification of beneficiaries, with illustrative case studies from shelter responses in the Philippines, Kosovo and Rwanda. The paper reviews different forms of ownerships and touched upon the issues of finding and housing displaced persons, in particular those previously homeless.

Country Case Studies

[Learning from the Urban Transitional Response in Haiti](#) 2012

This report documents Catholic Relief Service's experience in planning and implementing its urban transitional shelter response in Port-au-Prince, Haiti. The report highlights challenges, successes and key aspects that could be useful in future responses to urban disasters. The section (p.9) on 'Land Occupancy' - looks at the legitimacy of various tenure arrangements, and offers suggestions for best practice. Page 13 of the document looks at the subject of 'Renters and Owners', and how this relationship changed post-disaster.



[Learning from Urban Transitional Shelter Response in the Philippines: HLP Issues](#) 2012

This report documents Catholic Relief Services' experience in implementing an urban transitional settlement program in response to the destruction caused by Tropical Storm "Washi" in Cagayan de Oro in the Philippines. It offers reflections on ways to improve future transitional settlement and land programs, especially for those who do not have access to their own land. The 'Acquiring Land for Transitional Settlements, Step by Step' section (p.16) provides useful practical guidance on land acquisition in emergency settings.

[From Shelter to Housing: Security of Tenure and Integration in Protracted Displacement Settings - Lebanon and Georgia](#) 2012

This report from the Norwegian Refugee Council analyses evolving responses to tenure insecurity in protracted displacement settings and in relation to durable solutions, with an in-depth review of NRC's experiences in Lebanon and Georgia. Section 2 (pp. 19-24) discusses the relationship between emergency shelter responses and the right to adequate housing. The report provides recommendations on how shelter actors can coordinate and plan their responses with a view to the longer-term durable solutions.



[Post-Tsunami Transitional Settlement and Shelter: Field Experience from Aceh and Sri Lanka](#) 2007

This article reports on field work carried out in Sri Lanka and Aceh on transitional settlement and shelter in the wake of the Indian Ocean tsunami in December 2004. Policy and practice points are described in order to place the post-tsunami settlement and shelter processes within wider

Further Reading



[Housing, Land and Property Rights: 12th UK Shelter Forum](#) 2013

The annual UK Shelter Forum, hosted on the 22nd of February 2013, focused on 'Housing, Land and Property Rights'. The presentations and discussions from the forum are structured under three main headings: Aims; Approaches; and Sectoral capacity. Each section first presents the question and an outline of the presentation relevant to the topic.

[Shelter Report, Build Hope: Housing Cities After a Disaster](#) 2012

In this report, Habitat for Humanity reviews shelter responses in Haiti, the U.S. Gulf Coast, the Indian Ocean tsunami and other recent disasters, while exploring the complexities of responding to disasters in urban areas. The section on Tenure Security (pp. 11-13) broadly examines the dimensions of tenure security in disaster settings. The last chapter of the report focuses specifically upon the situation of women and renters.



[Addressing Regulatory Barriers to Providing Emergency and Transitional Shelter in a Rapid and Equitable Manner after Natural Disasters](#) 2011

The report of the International Federation of the Red Cross and Red Crescent Societies (IFRC) begins with background, noting the reasons why the IFRC have grown so concerned with regulatory barriers with regard to emergency and transitional shelter. It summarizes the key categories of these problems as experienced in recent major disasters. It then provides examples of creative solutions that have had success in recent disasters.