

DREF operation



International Federation
of Red Cross and Red Crescent Societies

Lesotho: Floods 2011

DREF operation n° MDRLS001
GLIDE n° FL-2011-000019-LSO
10 February, 2011

The International Federation's Disaster Relief Emergency Fund (DREF) is a source of un-earmarked money created by the Federation in 1985 to ensure that immediate financial support is available for Red Cross and Red Crescent response to emergencies. The DREF is a vital part of the International Federation's disaster response system and increases the ability of national societies to respond to disasters.

CHF 244,036 has been allocated from the Federation's Disaster Relief Emergency Fund (DREF) to support the national society in delivering immediate assistance to some 10,000 beneficiaries (1,000 households with non-food items and 2,000 households with hygiene promotion). Unearmarked funds to repay DREF are encouraged.

Summary:

As a result of recent heavy rains and subsequent flooding, 26 people have died, over 5,000 people have been displaced and 672 houses have been destroyed. Floods have also resulted in

wider disruption in the national economy and livelihoods of the Basotho people, including an increase in the number of animal diseases. At least 4,708 animals have been reported dead.



Lesotho Red Cross (LRCS) volunteers helping community to install tarpaulins after roofs were blown away during recent storms. LRCS photo

The floods have also escalated the potential for a widespread outbreak of diarrhoea due to poor sanitation and contamination of water sources.

Lesotho Red Cross Society has ten action teams, one team in each district, composed of five members. The society has so far distributed 200 kitchen utensils and 200 tarpaulins for temporary shelter. The Lesotho Red Cross Society plans to distribute non-food items and shelter kits for rural areas and tents for urban areas. Additionally it intends to provide water treatment to 1,000 families in the ten affected districts. Further support for latrine construction will be given to 200 targeted families.

This operation is expected to be implemented in 3 months, and will therefore be completed by May 2011. A Final Report will be made available three months after the end of the operation. Details of all DREF donors can be found on: <http://www.ifrc.org/what/disasters/responding/drs/tools/dref/donors.asp>

[<click here for the DREF budget,here for contact details,or here to view the map of the affected area>](#)

The situation

Lesotho has experienced heavy rains throughout the country from early December 2010 to the first of week of February 2011. According to the Lesotho Meteorological Services, the rains were categorized as above normal and many weather stations presented readings that surpassed the records for the ten year period of observation. The situation has resulted in widespread damage throughout the country with the result of 26 deaths.

The worst affected sectors are agriculture, roads, water and sanitation, health and trade. The total rainfall received in the northern districts of Lesotho during a 40 day period equalled the amount normally received over 6 months. The rest of the country received 50% of the 6 month rainfall.

The National Disaster Management Authority (DMA), UN and Red Cross conducted a rapid assessment exercise in 8 districts to assess the impact of the heavy rains. The following are the key findings of the rapid assessment:

- At least 21 cases of death due to drowning were reported in the districts of Thaba-Tseka, Qacha's Nek, Mahale's Hoek, Botha Buthe, Mokhotlong, and Berea.
- At least four siblings died when a rolling rock fell over their house at Khotsi's in Berea. In a related incident, a house collapsed over an elderly woman at Ha Mokhehle in Berea.
- There is currently a widespread outbreak of diarrhoea across the country due to poor sanitation and contamination of water sources. At least 543 cases were reported in the districts of Thaba-Tseka, Botha Buthe, Quthing and Leribe. Some few cases of dysentery were also reported in Botha Buthe.
- At least 672 houses were destroyed in 7 districts of Botha Buthe, Mokhotlong, Leribe, Mahale's Hoek, Berea, Quthing. Half of the houses destroyed are in Berea.
- At least 4,708 animals died as a result of the heavy rains, with 94% of the deaths being sheep and goats.
- There is an outbreak of animal diseases particularly *Mastitis*, *foot rot* and *anaplasmosis*, especially goats and sheep.
- Many health facilities across the country have inadequate medication for management of diarrhoea cases.
- Some health facilities are currently inaccessible by road due to damaged roads, bridges, culverts and flooding of the rivers. As a result, drug supply especially ARVs are expected to run out of stock while patients will not be able to access some of the health facilities
- Roads, Bridges and culverts were massively destroyed in all districts. This makes road access to health facilities, schools, trading centres particularly difficult.
- There is an outbreak of crop pests and diseases such as harvester termites (social pest that affects almost all sectors) and blight (in potatoes and beans) which are expected to exacerbate the food insecurity situation.

The situation of affected communities is expected to worsen if urgent assistance is not received in the form non-food items, safe and reliable water supply and sanitation facilities. These interventions are critical given that access to health facilities has been greatly affected. Assessments (e.g. UN OCHA update No 3) report that over 50% of roads have been destroyed, rendering schools and health centres inaccessible.

Coordination and partnerships

At national level, the National Society is working closely with institutions such as DMA and the Inter Agency Disaster Management Committee is carrying out joint assessments and coordinating response activities.

At regional level, the International Federation is coordinating with regional bodies, such as UN OCHA which publishes regional updates on the flood situation. The International Federation is also attending briefing meetings and updating the regional mechanism on the situation on the ground as reported by national society disaster management teams.

Red Cross and Red Crescent action

The IFRC is in contact with national and regional agencies, collecting and sharing information related to the flooding. At national level, the National Society was part of the national Rapid Assessment Team in all eight affected districts of the country and the divisional offices played a major role in assisting the district Disaster Teams during the assessment. Due to the evolving nature of the situation, the divisions are providing updates which are fed into the national level rapid assessment findings. Lesotho Red Cross Society had a joint emergency relief planning session with National Disaster Management Authority, government ministries, UN agencies and other NGOs from 1-3 February.

The needs

The affected population of 5,000 people are in need of non food items such as kitchen sets and shelter. Interventions to provide safe water and sanitation aimed at reducing the spread of diseases such as cholera and acute watery diarrhoea (AWD) are foreseen. The National society will also undertake public health awareness campaigns on the risks associated with floods.

The proposed operation

This DREF request is mainly focusing on meeting immediate relief needs while continuously assessing the situation as it evolves. It will also reduce the risk of water borne and sanitation-related diseases through the promotion of safe water use and good hygiene practices.

Shelter and provision of basic household items

Objective: 5,000 flood-affected persons (1,000 families) are provided with emergency assistance for a period of three months with on-going assessment to determine if further assistance is required.

Activities planned:

- Conduct rapid emergency needs and capacity assessments in Botha Bothe, Mokhotlong, Leribe, Mohale's Hoek, Berea, Quthing, Thaba-Tseka and Qacha's Nek, Districts;
- Develop beneficiary targeting strategy and registration system to deliver intended assistance.
- Distribute NFI items to 5,000 affected people, equivalent to 1,000 families.
- Monitor and evaluate the relief activities and provide reporting on relief distributions.
- Distribute 600 shelter kits (rural) and 100 tents (urban) to the affected families

Water, sanitation, and hygiene promotion

Objective: The risk of water-borne and water-related diseases (including dysentery) is reduced through the provision of safe water, adequate sanitation facilities and hygiene promotion.

Activities planned:

- Assess the existing coverage with a view of ensuring availability of an adequate water supply;
- Provide potable water, appropriate sanitation and hygiene promotion for 5,000 people (dysentery and flood affected) Botha Bothe, Mokhotlong, Leribe, Mohale's Hoek, Berea, Quthing, Thaba-Tseka and , Qacha's Nek, Districts;
- Conduct training/information programmes for Red Cross volunteers and beneficiaries, in particular on the safe use of Water Treatment Products (aqua tablets).
- Assist with the construction of 200 latrines.
- Distribute water treatment chemical (aqua tabs) for three months.
- Provide one jerry cans and one bucket to 1,000 families (1,000 jerry cans and 1,000 buckets).
- Conduct hygiene promotion campaigns targeting 2,000 families in and around the affected area focusing on behaviour change.
- Provide information, education and communication (IEC) materials on hygiene promotion (print 2,000 posters).

Emergency health

Objective: To reduce the risk of communicable diseases through community health activities focusing on the community-based health and First Aid (CBHFA) approach.

Activities planned:

- Deploy and monitor community-based volunteers on CBHFA and hygiene promotion.
- On-going monitoring of dysentery and other public health risks due to flooding.
- Distribute condoms and other HIV related materials including information on adherence to anti retroviral therapy in the affected areas
- Conduct sensitization meetings in the community on treatment literacy.

How we work

All International Federation assistance seeks to adhere to the [Code of Conduct for the International Red Cross and Red Crescent Movement and Non-Governmental Organizations \(NGO's\) in Disaster Relief](#) and is committed to the [Humanitarian Charter and Minimum Standards in Disaster Response \(Sphere\)](#) in delivering assistance to the most vulnerable.

The International Federation's activities are aligned with its Global Agenda, which sets out four broad goals to meet the Federation's mission to "improve the lives of vulnerable people by mobilizing the power of humanity".

Global Agenda Goals:

- Reduce the numbers of deaths, injuries and impact from disasters.
- Reduce the number of deaths, illnesses and impact from diseases and public health emergencies.
- Increase local community, civil society and Red Cross Red Crescent capacity to address the most urgent situations of vulnerability.
- Reduce intolerance, discrimination and social exclusion and promote respect for diversity and human dignity.

Contact information

For further information specifically related to this operation please contact:

- **In Lesotho:** Tebeho Kiteli, Secretary General phone: +28.66.22313911, Fax: +28.6622310166; email: tkiteli@redcross.org.ls
- **In IFRC Southern Africa Region:** Ken Odur, Regional Representative, Johannesburg, Email: ken.odur@ifrc.org, Phone: +27.11.303.9700, Fax: + 27.11.884.3809; +27.11.884.0230
- **In IFRC Southern Africa Region:** Disaster Management Coordinator; Farid Abdulkadir Email: farid.aiywar@ifrc.org; Phone: Mobile: +27.83.440.0564 Tel: +27.11.303.9700; +27.11.303.9721; Fax: +27.11.884.3809; +27.11.884.0230
- **In IFRC Africa Zone:** Dr. Asha Mohammed, **Head of Operation**; Email: Asha.mohammed@ifrc.org ; Tel: +27.11.303.9700; +27.11.303.9721; Fax: +27.11.884.3809; +27.11.884.0230
- **In Geneva:** Christine South, Operations Coordinator for Southern Africa region; phone: Tel +41 22 730 4529; fax: +41 22 730 0395; email: Christine.South@ifrc.org

[<DREF budget and map below; click here to return to the title page>](#)

DREF APPEAL BUDGET SUMMARY

Lesotho Floods 2011 (MDRLS001)

ORIGINAL

RELIEF NEEDS

| | |
|---------------------------------|--------|
| Shelter | 67,000 |
| Shelter - Transitional | 0 |
| Construction Materials | 0 |
| Clothing & Textiles | 10,000 |
| Food | 0 |
| Seeds & Plants | 0 |
| Water & Sanitation | 43,500 |
| Medical & First Aid | 1,000 |
| Teaching Materials | 0 |
| Utensils & Tools | 33,000 |
| Other Supplies & Services | 30,000 |
| Emergency Response Units (ERUs) | 0 |

| | |
|---------------------------|----------------|
| Total Relief Needs | 184,500 |
|---------------------------|----------------|

CAPITAL EQUIPMENT

| | |
|-------------------------------------|---|
| Land & Buildings | 0 |
| Vehicles Purchase | 0 |
| Computers & Telecom Equipment | 0 |
| Office/Household Furniture & Equip. | 0 |
| Medical Equipment | 0 |
| Other Machinery & Equipment | 0 |

TRANSPORT, STORAGE & VEHICLES

| | |
|----------------------------|--------|
| Storage - Warehouse | 1,000 |
| Distribution & Monitoring | 12,000 |
| Transport & Vehicles Costs | 2,214 |

PERSONNEL

| | |
|---------------------------|--------|
| International Staff | 1,025 |
| Regionally Deployed Staff | 1,000 |
| National Staff | 3,860 |
| National Society Staff | 10,000 |
| Consultants | 0 |

WORKSHOPS & TRAINING

| | |
|----------------------|---|
| Workshops & Training | 0 |
|----------------------|---|

GENERAL EXPENSES

| | |
|--------------------------------|-------|
| Travel | 1,500 |
| Information & Public Relations | 7,000 |
| Office running costs | 1,500 |
| Communication Costs | 3,043 |
| Professional Fees | 0 |
| Financial Charges | 500 |
| Other General Expenses | 0 |
| Depreciation | 0 |

PROGRAMME SUPPORT

| | |
|-------------------------|--------|
| Programme Support - PSR | 14,894 |
|-------------------------|--------|

SERVICES & RECOVERIES

Services & Recoveries

| | |
|--------------------------------|---------------|
| Total Operational Needs | 59,536 |
|--------------------------------|---------------|

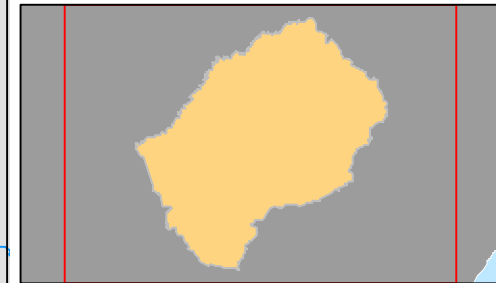
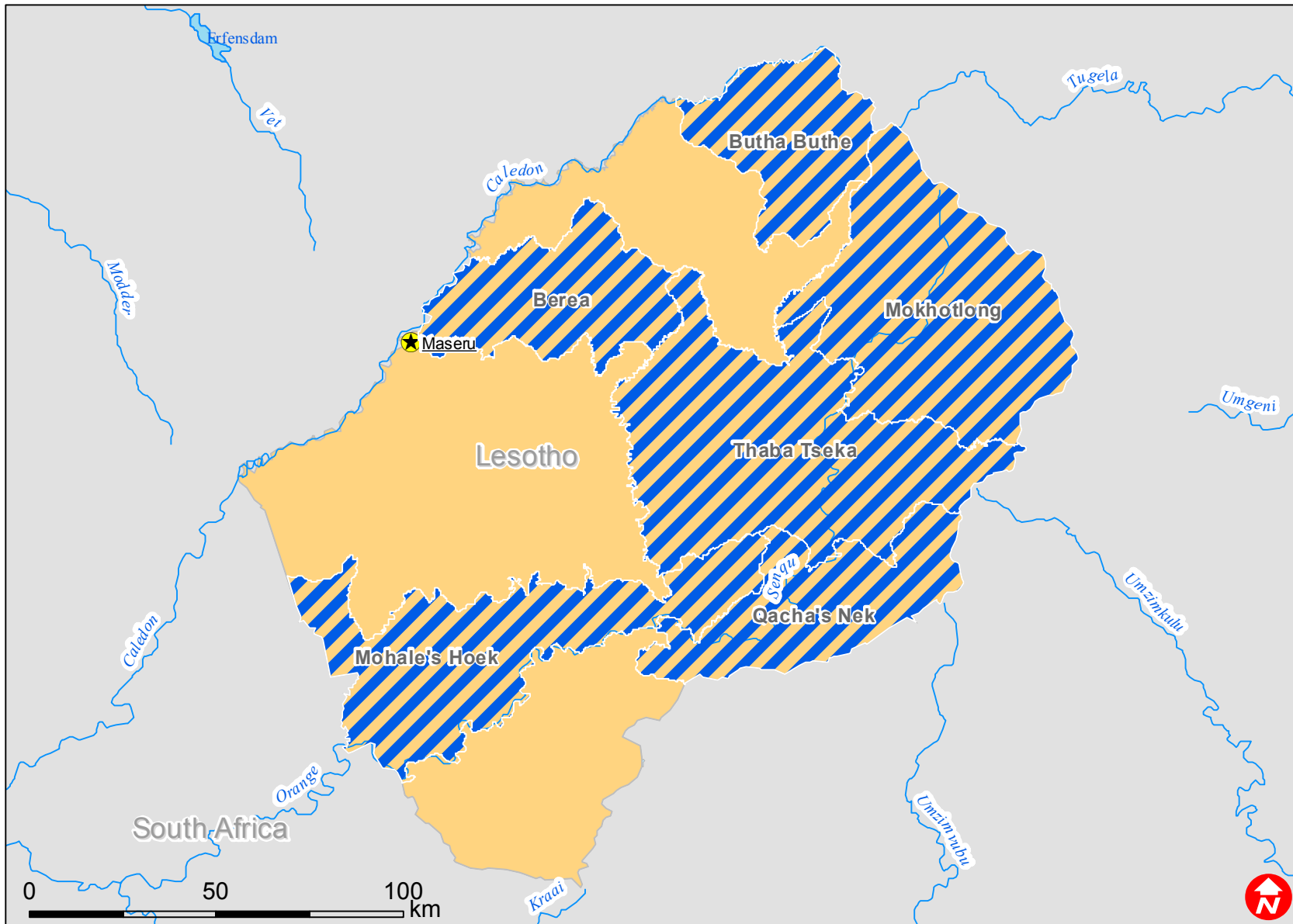
| | |
|--------------|----------------|
| TOTAL | 244,036 |
|--------------|----------------|



International Federation of Red Cross and Red Crescent Societies
Fédération internationale des Sociétés de la Croix-Rouge et du Croissant-Rouge
Federación Internacional de Sociedades de la Cruz Roja y de la Media Luna Roja
الاتحاد الدولي لجمعيات الصليب الأحمر والهلال الأحمر

MDRLS001
FL-2011-000019-LSO
8 February 2011

Lesotho: Floods



 Death reported in district