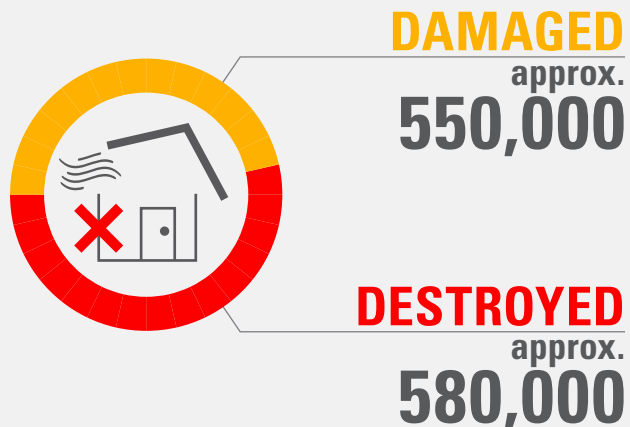


Typhoon Haiyan

Typhoon Haiyan (locally known as Yolanda) swept through the central Philippines on 8 November 2013, killing more than **6,000** people and displacing **4 million**.

December 16, 2013

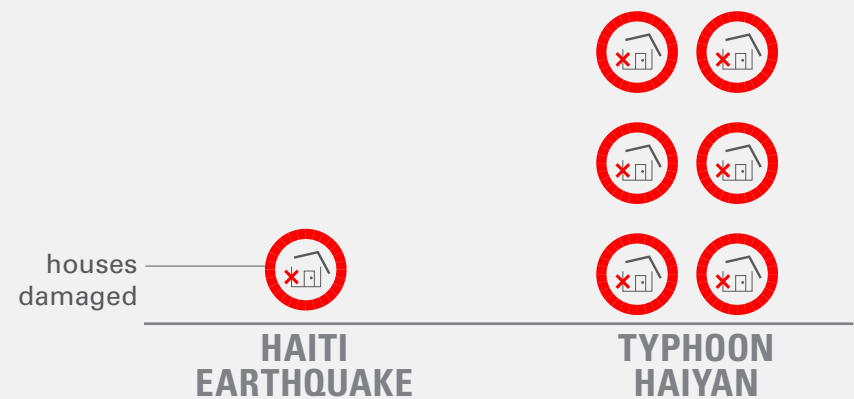
1.1 MILLION HOUSES DAMAGED



Source: Department of Social Welfare and Development

HAITI EARTHQUAKE vs. TYPHOON HAIYAN

Typhoon Haiyan damaged and destroyed more than **6x** as many houses as were damaged by the Haiti earthquake in 2010.



INTERNATIONAL ASSISTANCE

The Government has asked the international community to address the shelter needs of **500,000** households — approximately **2.5 MILLION** people.

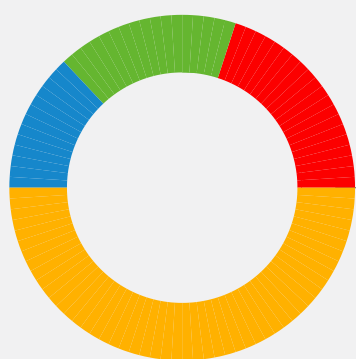
The remaining families will be assisted directly by the government.

Shelter Cluster Partners are planning to provide emergency shelter materials such as tents and tarpaulins to **300,000** households.



500,000 households will receive more substantial shelter assistance. This "support for self-recovery" includes building materials, corrugated iron sheets, tools, cash etc. Local authorities will receive temporary staff, technical and policy training around community resilience and risk reduction.

SURVIVORS ARE HARD AT WORK



- 20%** of all households have not started repairing/rebuilding their homes
- 50%** of all households have started but need support in order to finish
- 13%** of all households have started and can finish using their own resources
- 17%** have already finished repairs

Source: REACH Assessment

DELIVERED

in the first five weeks since Typhoon Haiyan struck the Philippines:

750,000

PEOPLE HAVE RECEIVED EMERGENCY SHELTER

200,000

PEOPLE HAVE RECEIVED SUPPORT FOR SELF RECOVERY

Source: Shelter Cluster

URGENTLY NEEDED

over the next four months, as well as the logistical support to deliver them to the affected communities:

4 MILLION

SHEETS OF CORRUGATED IRON are needed to provide families with durable roofs.

700,000

HURRICANE STRAPS as well as other fixings and training are needed to ensure that roofs are properly fixed and homes are built safely.