

FLOOD WATERS IN ZAMBEZIA, TETE AND SOFALA, MOZAMBIQUE, AND SOUTHERN REGION, MALAWI

Analysis with Radarsat-2 Data Acquired 30 January 2015 & 21 January 2015 & Sentinel-1 Data Acquired 11 December 2014

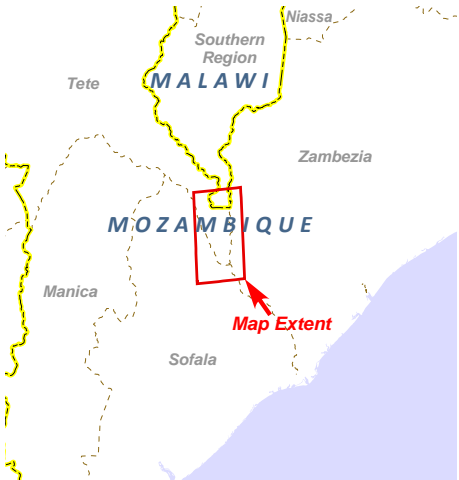
Flooding



Production Date:
03-Feb-15

Version 1.1

Glide Number:
FL20150112MOZ



This map illustrates satellite-detected flood waters in the Caia, Chemba, Mopeia and Mutarara and Morrumbala Districts of Mozambique and Nsanje District of southern Malawi along the Shire River as detected by Radarsat-2 imagery acquired 30 January 2015. Between 21 January 2015 and 30 January 2015 waters receded from about 30,000 ha of lands but many areas along the Shire River remain affected. About 22 villages are located within the flooded zone as of 30 January 2015 and according to the World Population data base around 25,000 people are located within these potentially affected areas. This is a preliminary analysis and has not yet been validated in the field. Please send ground feedback to UNITAR / UNOSAT.

LEGEND

- City/Town
- Populated Place
- Affected Populated Place
- International Boundary
- Administrative Boundary
- Highway/Primary Road
- Secondary Road
- Local/Urban Road
- Satellite Detected Waters: 11 December 2014
- Satellite Detected Waters: 30 January 2015
- Receded Waters Between 21 and 30 Jan. 2015

Map Scale for A3: 1:275,000

Satellite Data (1): Radarsat-2
Imagery Dates: 30 January 2015
Resolution: 12.5 m
Copyright: MacDonald, Dettwiler and Associates Ltd.
Source: KSAT
Satellite Data (1): Radarsat-2
Imagery Dates: 21 January 2015
Resolution: 12.5 m
Copyright: MacDonald, Dettwiler and Associates Ltd.
Source: KSAT
Satellite Data (3): Sentinel-1
Imagery Date: 11 December 2014
Resolution: 10 m
Copyright: Copernicus 2014 / ESA
Source: Sentinel-1 Scientific Data Hub
Road Data : Google Map Maker / OSM / ESRI
Other Data: USGS, UNCS, NASA, NGA, WorldPopProject
Analysis : UNITAR / UNOSAT
Production: UNITAR / UNOSAT
Analysis conducted with ArcGIS v10.2

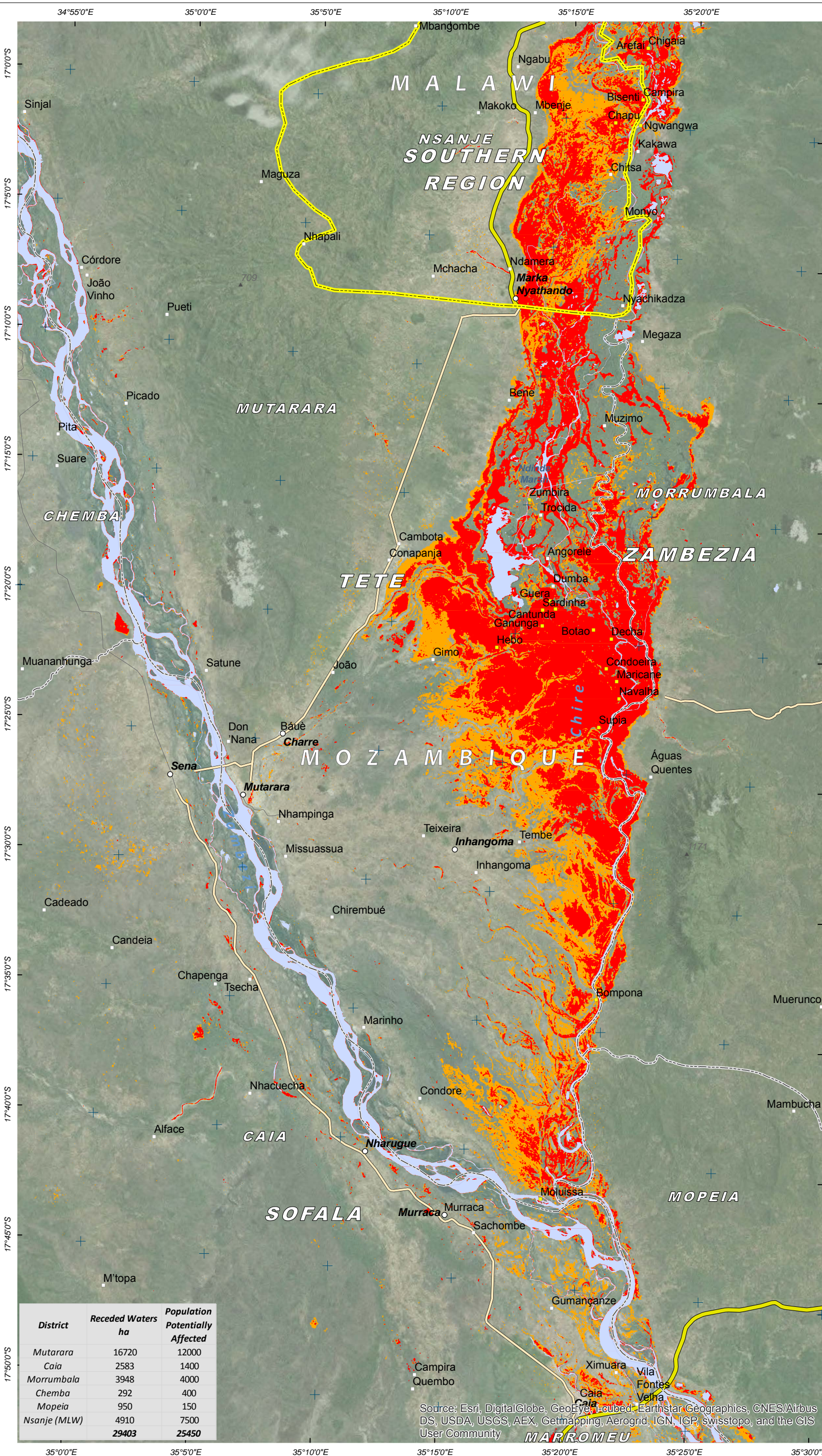
Coordinate System: WGS 1984 UTM Zone 36S
Projection: Transverse Mercator
Datum: WGS 1984
Units: Meter

The depiction and use of boundaries, geographic names and related data shown here are not warranted to be error-free nor do they imply official endorsement or acceptance by the United Nations. UNOSAT is a program of the United Nations Institute for Training and Research (UNITAR), providing satellite imagery and related geographic information, research and analysis to UN humanitarian and development agencies and their implementing partners.



UNOSAT

Contact Information: unosat@unitar.org
24/7 Hotline: +41 76 487 4998
www.unitar.org/unosat



District	Receded Waters ha	Population Potentially Affected
Mutarara	16720	12000
Caia	2583	1400
Morrumbala	3948	4000
Chemba	292	400
Mopeia	950	150
Nsanje (MLW)	4910	7500
	29403	25450

Source: Esri, DigitalGlobe, GeoEye, iCubed, Earthstar Geographics, CNES/Airbus DS, USDA, USGS, AEX, Getmapping, Aerogrid, IGN, IGP, swisstopo, and the GIS User Community