



Shelter/NFI N.E Nigeria UPDATES

22nd October 2020

GSC Meeting 2020

Needs and Planned Response

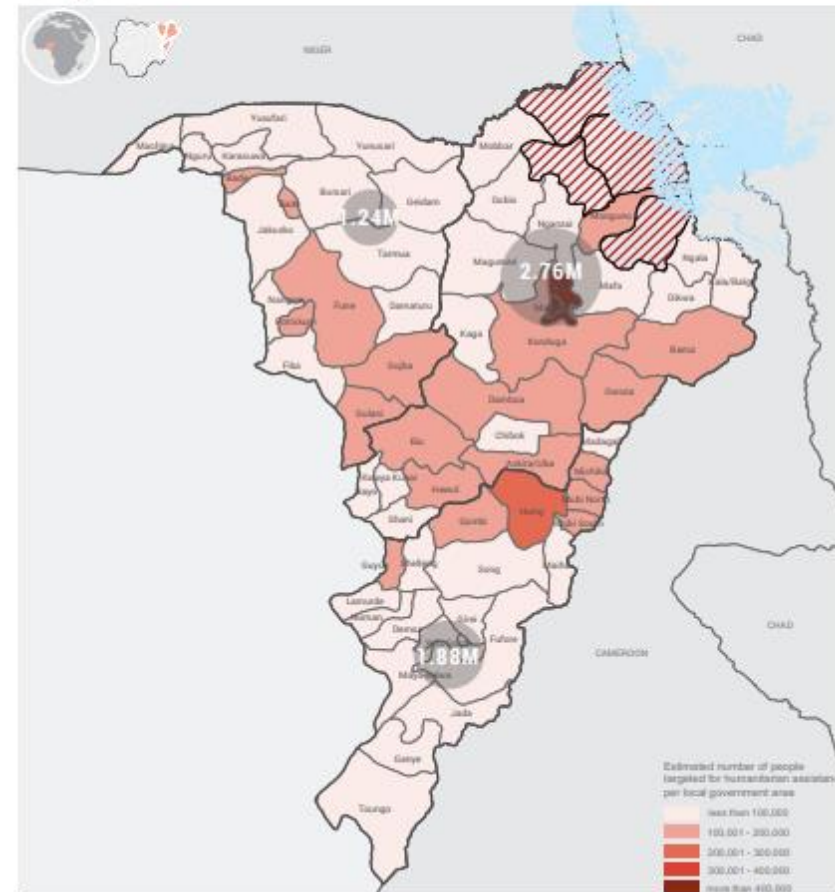


Overview

- The conflict in North-east Nigeria is in its **10th year** and continues to cause untold suffering for millions of Nigerians, particularly women and children.
- Overall IDP population is 2,118,550
- 273 camps in the BAY states.
- 157 (58%) of these are managed by CCCM and the rest are informal camps.

Overview map

More on pages 15-26



The designations employed and the presentation of material in the report do not imply the expression of any opinion whatsoever on the part of the Secretariat of the United Nations concerning the legal status of any country, territory, city or area or of its authorities, or concerning the delimitation of its frontiers or boundaries.

Emergency Shelter and Non-Food Items



PEOPLE IN NEED

2.5M

PEOPLE TARGETED

1.0M

REQUIREMENTS (US\$)

\$65.6M

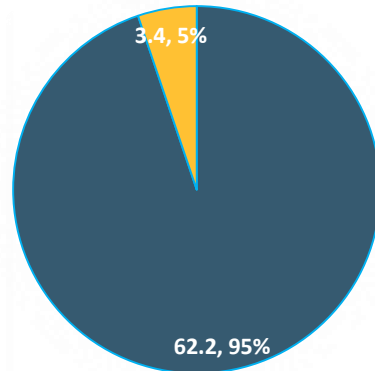
PARTNERS

12

PROJECTS

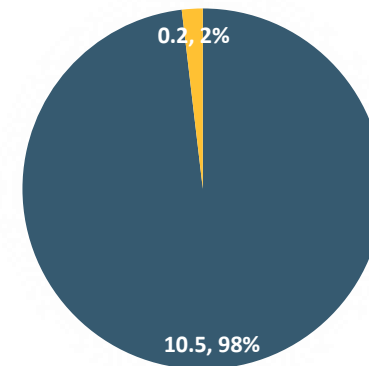
13

Funding Progress - excluding COVID-19



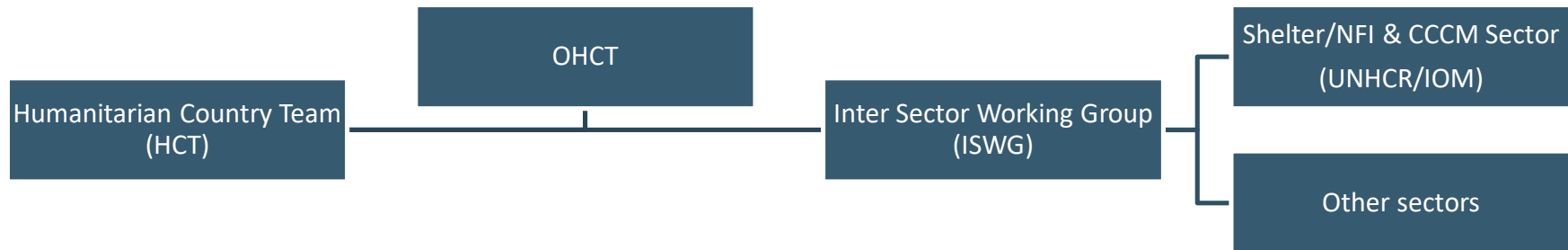
■ Gap (US\$m) ■ Funded (US\$m)

Funding Progress – COVID-19



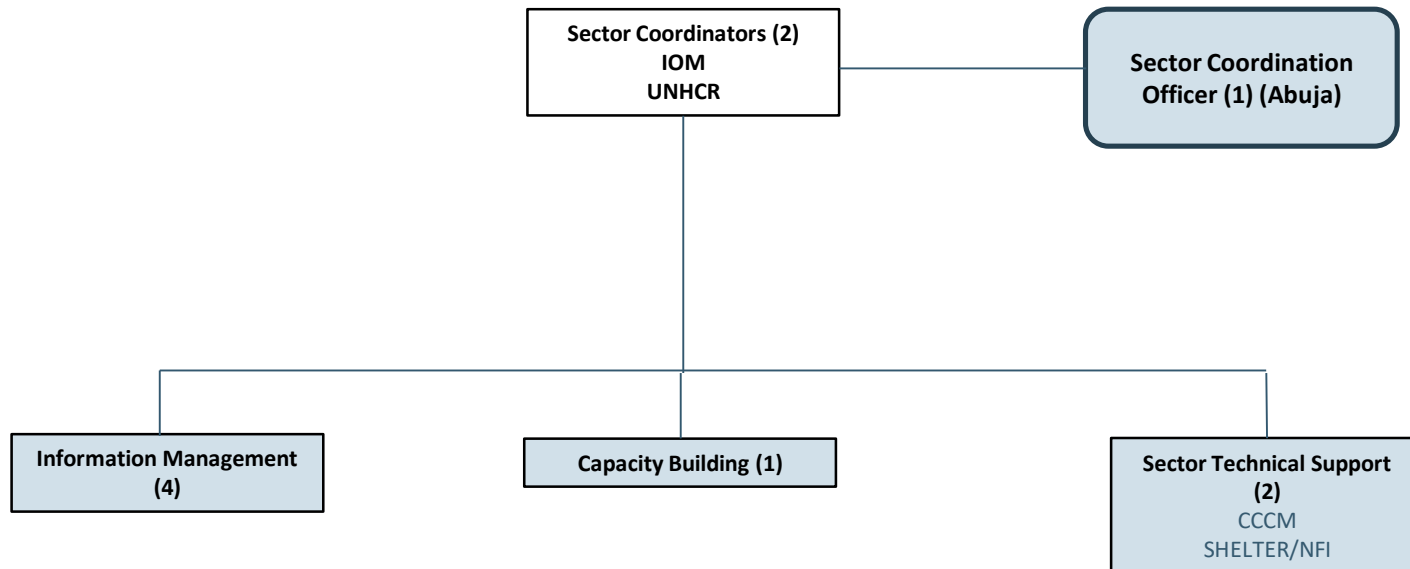
■ Gap (US\$m) ■ Funded (US\$m)

COORDINATION STRUCTURE



- The Sector is Merged with CCCM
- It is Co-lead by UNHCR and IOM
- The Key line Government line ministries are:
National Emergency Management Agency (NEMA) at Federal level
State Emergency Management Agency (SEMA) at state level
- The Sector has 10 active partners

Shelter/NFI & CCCM Sector



Challenges

- Access
- Security
- Logistics
- Funding
- Limited land for humanitarian access
(Available lands are outside military trench)
- Climatic weather condition
- Congestion

Shelter options

Emergency Shelter Response

- Emergency Shelter Kits (Rapid response)
- Emergency shelters
- Cash for Rent (Rental subsidies) – Settled in Host Community
- Transit Centers – Rapid response and mass influx
- Communal Shelter – temporary solution to allow for settlement development

Transitional Shelter Response

- Transitional Shelters
- Rehabilitation of existing buildings

Shelter Solutions



Transit Centers



Communal Shelters

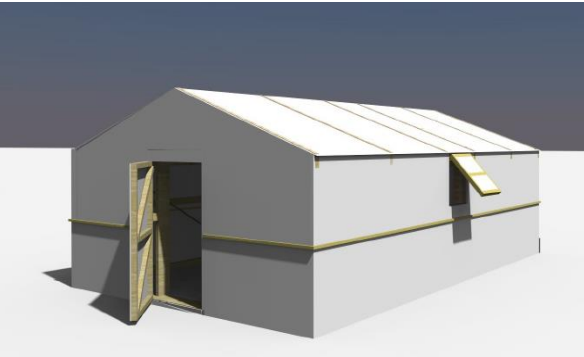


Transitional Shelters

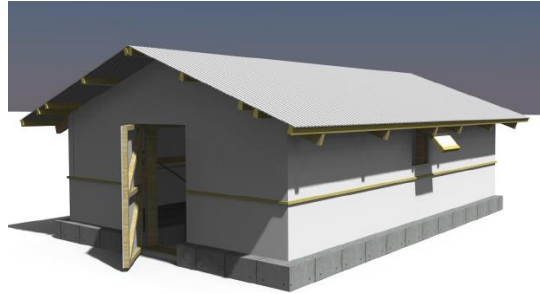


Emergency Shelters

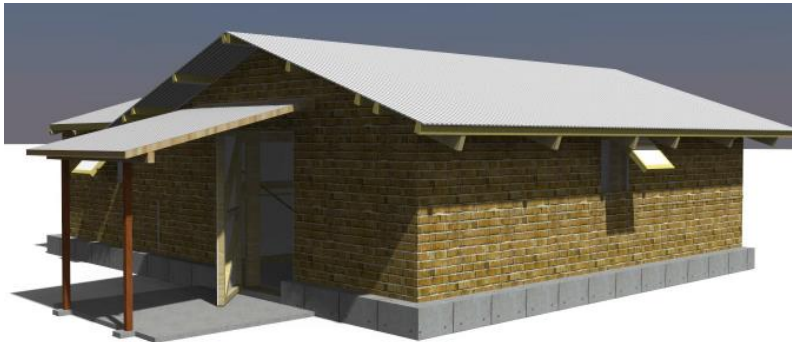
PHASE 1
Standard Reinforced Bama Model



PHASE 2
Replacement of Bama Shelter roofing with CGI sheet, and Reinforcement with Sand Crete block work round



PHASE 3
Replacing the Tarpaulin wall at low height with low height mud brick and plaster



PHASE 5
Any additions undertaken by the houseowner



PHASE 4
Replacing all the remaining Tarpaulin wall (upper part) with mud brick without plaster



GSSSS Camp Bama, Borno state



Mohammed Kyari IDP Camp

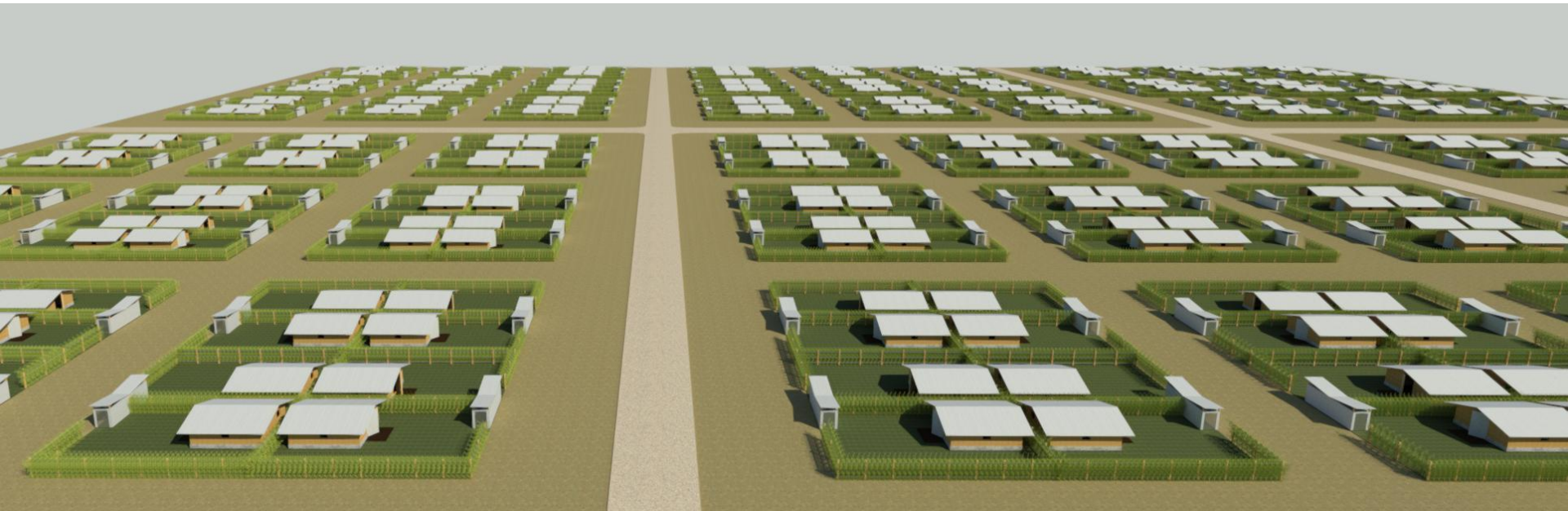


CAMP Decongestion: Background

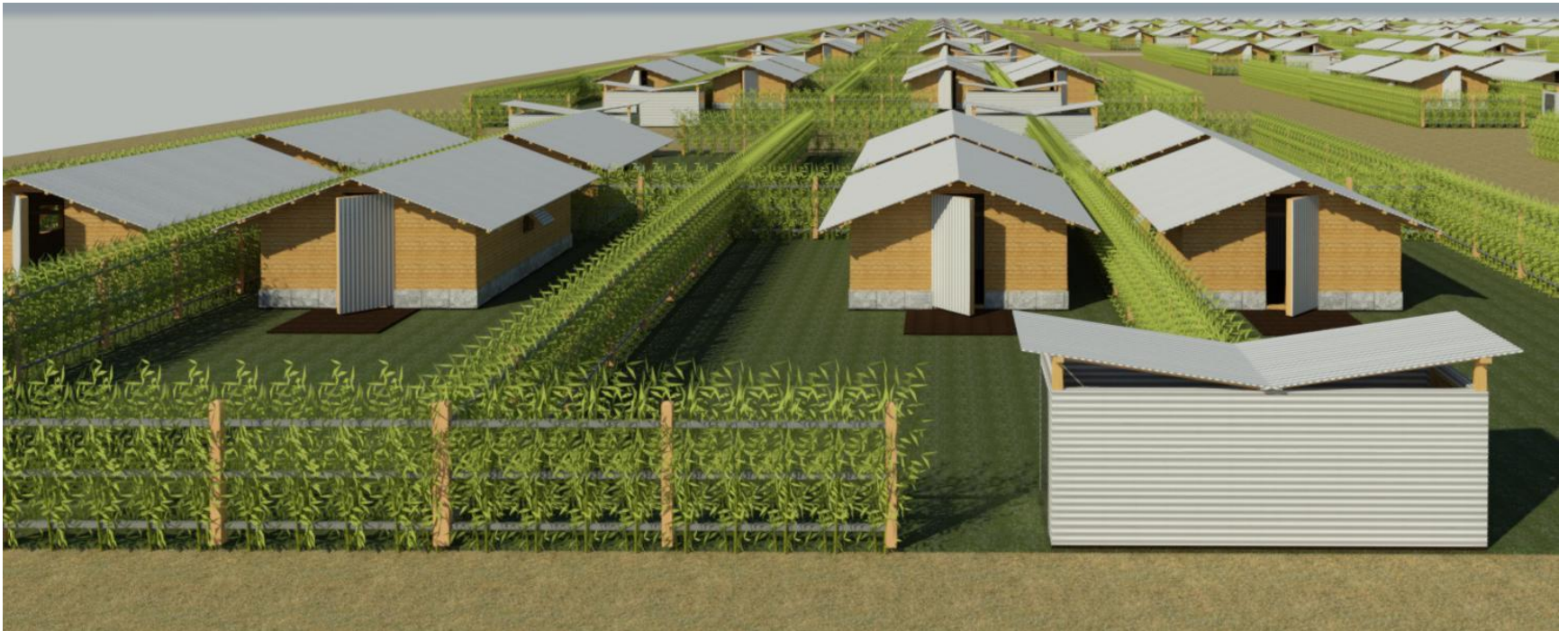
- 273 camps in the BAY states, 73 camps and sites (424,515 individuals) are considered Highly congested, 25 camps/sites (172,961 individuals) are considered moderately congested, 36 camps (113,086 individuals) are low congested while 139 camps and sites are not congested (123,077 individuals).
- 1,274 Hectares of land needed to enable the decongestion of 424,515 individuals who are having a surface area less than 19m² per person for living space.
- **High congestion**- ≤ 20 Sq. m/individual.
- **Moderate Congestion**-between 20 – 29.99 Sq. m/individual
- **Low congestion**- between 30 – 44.99 Sq. m/individual
- **Uncongested**- ≥ 45 Sq. m/individual.
- Land advocacy and push for Land ownership for relocated IDPs

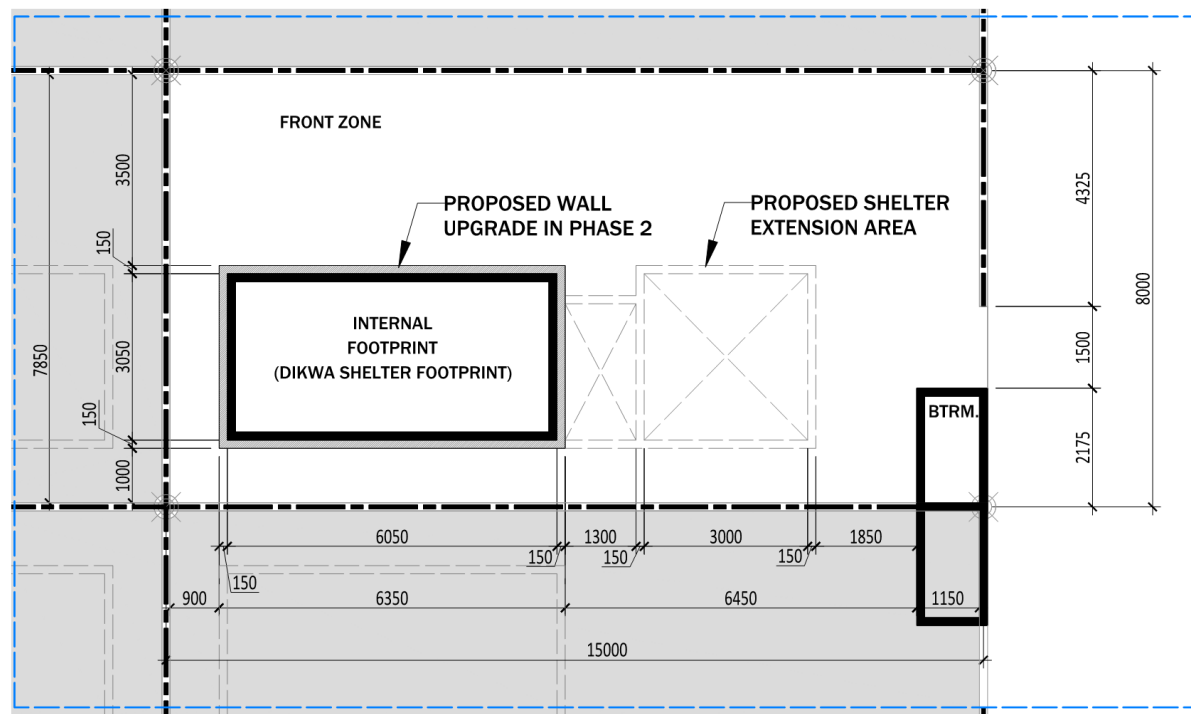


Community and Block Layout



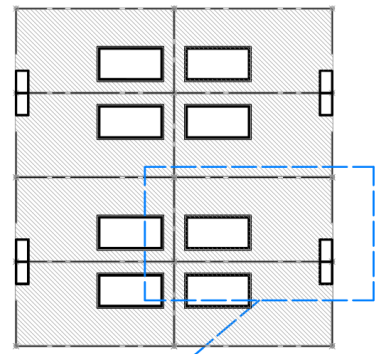
CELL LAYOUT





PLOT LAYOUT

CELL LAYOUT



PLOT ANALYSIS

- AREA OF PLOT=960M²
- AVERAGE NUMBER OF INDIVIDUALS/PLOT=5
- AREA/INDIVIDUAL = 24M²

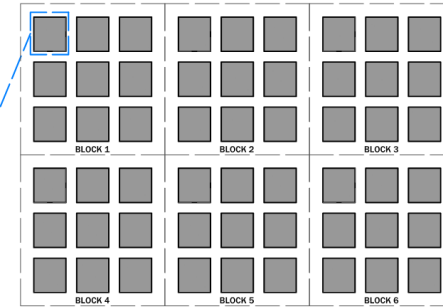
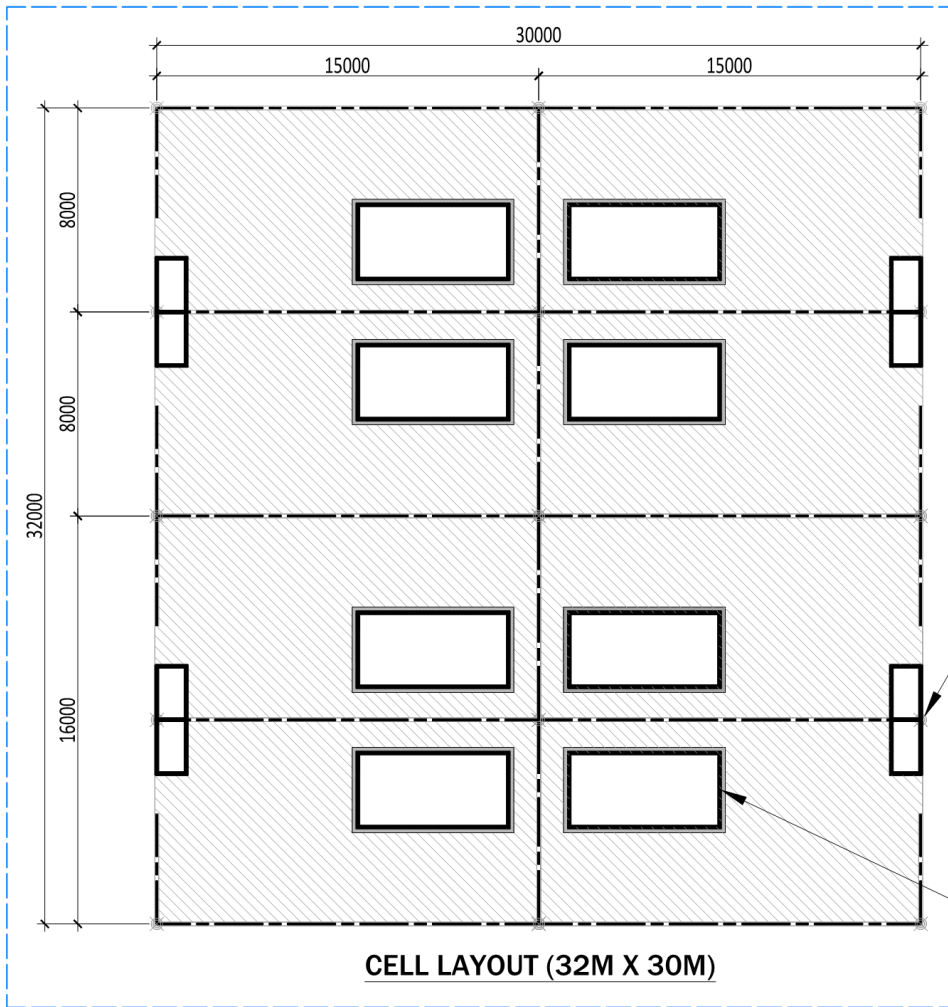
General Notes:-
1. All dimensions are in 'mm'.

Shelter/NFI & CCCM Sector :



Issued by :
SHELTER/NFI & CCCM SECTOR

Title : PROPOSED PLOT LAYOUT			
Checked by :	Shelter/NFI TWIG		
Drawn by :	A.C. & P.M.	July 2020	
DRG NO. DECON. 003	Scale :	AS SHOWN	
Approval :			



**COMMUNITY LAYOUT
(405M X 282M)**

Latrine with shared pit

Transitional Shelter

CELL ANALYSIS

- AREA OF CELL =960M2
- NUMBER OF INDIVIDUALS/CELL=40
- ACCEPTABLE GROUND AREA/SHELTER PLOT = 120M2
- NUMBER OF PLOTS=8

General Notes:-
1. All dimensions are in 'mm'.

Shelter/NFI & CCCM Sector :

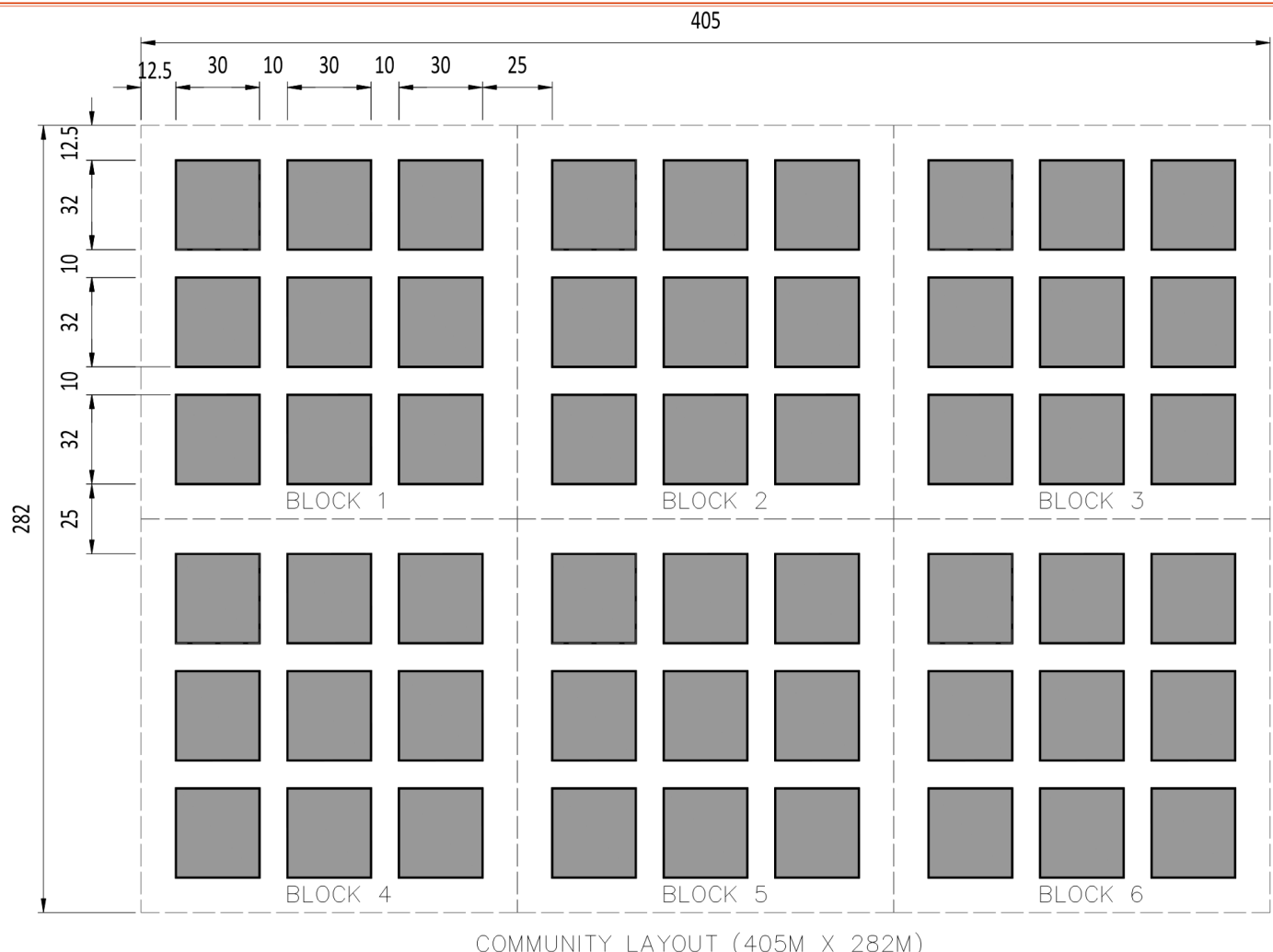


Issued by :

SHELTER/NFI & CCCM
SECTOR

Title : **PROPOSED CELL LAYOUT**

Checked by :	Shelter/NFI TWIG	
Drawn by :	A.C. & P.M.	July 2020
DRG NO. DECON. 002	Scale :	AS SHOWN
Approval :		



COMMUNITY LAYOUT ANALYSIS

STANDARDS

- HEALTH CENTER: (1/20,000 PPL.)
- DISTRIBUTION CENTER: (1/5,000 PPL.)
- MARKET PLACE: (1/20,000 PPL.) 5,000M2
- ADMIN, REGISTRATION AND SECURITY: (AS APPROPRIATE)

COMMUNITY ANALYSIS

- AREA OF COMMUNITY = 14,210 M2
- NUMBER OF INDIVIDUALS/COMMUNITY=2,160
- ACCEPTABLE GROUND AREA/IND.=35 - 45M2
- GROUND AREA/IND.= 45.3M2
- NUMBER OF BLOCKS = 6
- ACCESS ROADS: 25M SPAN

BLOCK ANALYSIS

- AREA OF BLOCK=12,692.29M2
- NUMBER OF INDIVIDUALS/COMMUNITY=360
- ACCEPTABLE GROUND AREA/IND.=35-45M2
- GROUND AREA/IND.= 35.25M2
- NUMBER OF CELLS=9
- ACCESS ROADS: 10M SPAN

CELL ANALYSIS

- AREA OF CELL = 960M2
- NUMBER OF INDIVIDUAL/CELL=40
- ACCEPTABLE GROUND AREA/SHELTER PLOT=120M2
- NUMBER OF PLOTS=8



COMMUNITY LAYOUT (405M X 282M)

General Notes:-
 1. All dimensions are in metres.

Shelter/NFI & CCCM Sector :

SHELTER DMS/CCCM NIGERIA

Issued by :
SHELTER/NFI & CCCM SECTOR

Title : PROPOSED COMMUNITY LAYOUT		
Checked by :	Shelter/NFI TWIG	
Drawn by :	A.C. & P.M.	July 2020
DWG NO. DECON. 001	Scale :	AS SHOWN
Approval :		

End