



**Shelter Cluster Pakistan**

ShelterCluster.org

Coordinating Humanitarian Shelter

## **Shelter Cluster intervention and support for SWA returns**



**Background:**

At the beginning of 2015, the number of IDPs in KP reached 1.67 million after the last operation conducted in Khyber Agency. The government of Pakistan announced the 2015 return plan with a planning figure of around 154,000 families. The first phase of the returns was for the displaced families from South Waziristan Agency with an estimation caseload of 2,500 - 3,000 families. The return process started on 16<sup>th</sup> of March 2015 and concluded on 31<sup>st</sup> March 2015. A total of 3,238 families returned to the area of origin, all families were facilitated with VRF.

With the approval of the HCT to support the return operation, Shelter Cluster activated the intervention in SWA as agreed in the cluster framework for support of the return. Shelter cluster started phase one intervention to provide immediate assistance by conducting detailed assessment in parallel with the return to identify the most vulnerable families who needed assistance to manage the early stage of their return.

Shelter Cluster deployed two cluster members (SRSP & FRD) to conduct the assessment and provide assistance to the returnees under the funds provided by UNHCR.

Assessment started on 17<sup>th</sup> of March by dividing the villages between the two partners. The assessment has been conducted on the House hold (compound basis) level using criteria for beneficiary selection that were developed in consultation with the shelter cluster partners and based on the vulnerability criteria that were approved before by HCT. The assessment and assistance provided by the Shelter Cluster and its members concluded on 13<sup>th</sup> April.

**Shelter Cluster members involved:**

- Assessment and assistance were funded by UNHCR
- Assessment conducted by FRD & SRSP.
- Stock management and distribution by SRSP.

**Assessment target:**

The main target of shelter cluster assessment is to provide the assistance for the returnees on need basis as per the cluster frame work:

**For phase one:**

- 1- Identify the level of destruction in the areas of return and identifying the HHs who fulfil the criteria to provide the assistance of tents or tool kits.
- 2- Identifying the most vulnerable HHs who fulfil the vulnerability criteria to provide assistance of NFIs Kits.

**For phase two:**

Collect information to identify:

- 1- The priority needs in shelter.
- 2- The priority needs in NFIs.
- 3- The targeted population for the second phase of assistance for shelter and NFIs as per the cluster frame work.

Part of the assessment findings will be used on the spot to provide the assistance of the first phase and the second will be analysed and used in case there is plan for assistance within phase two.

The assessment questionnaires/tools (attached) were developed and agreed by the cluster technical working group to be able to collect the maximum information to achieve the assessment targets, the information vary from the general information about the HHs, age, gender and disability, then information about the current level of destruction, owned assets, average and source of income, level of vulnerability ....etc.

Detailed information collected by assessment teams to provide their recommendations on the spot for the assistance provided in the first phase (Tents, tool kits and NFIs).

In addition to the questionnaire the cluster partners develop the criteria which will be used for the shelter assistance and agreed to use the vulnerability criteria approved by HCT for NFIs assistance.

**Criteria for the assessment and distribution:**

Criteria for Tents and Tool Kits:

- One tent for the HH (Compound) which doesn't have one dry room.
- One tool kit for the HH (Compound) which has just one dry room and more than two families.



Criteria for NFIs

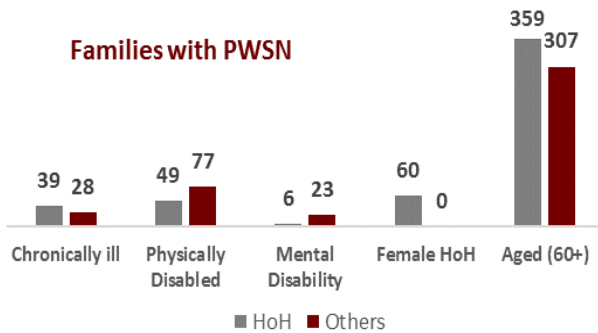
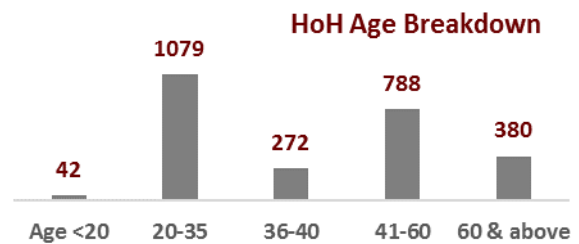
- **Child headed family** (up to 18 years) with one or more dependents but without any income service.
- **Female headed family** representative with one or more dependents, who is the primary income earner/care provider, but has no assets or reliable source income and is without adequate support from her own family/community.
- **Single female** with one or more dependents but no income and support from the family/community.
- **Head of Household with a disability** (physical, mental or sensory impairment), which prevents him/her from earning an income and who lacks family/community support.
- **Head of Household over the age of 60** years without any coping mechanism and adequate support available.



***Information collected – Finding of the assessment***

**Assessment General Information**

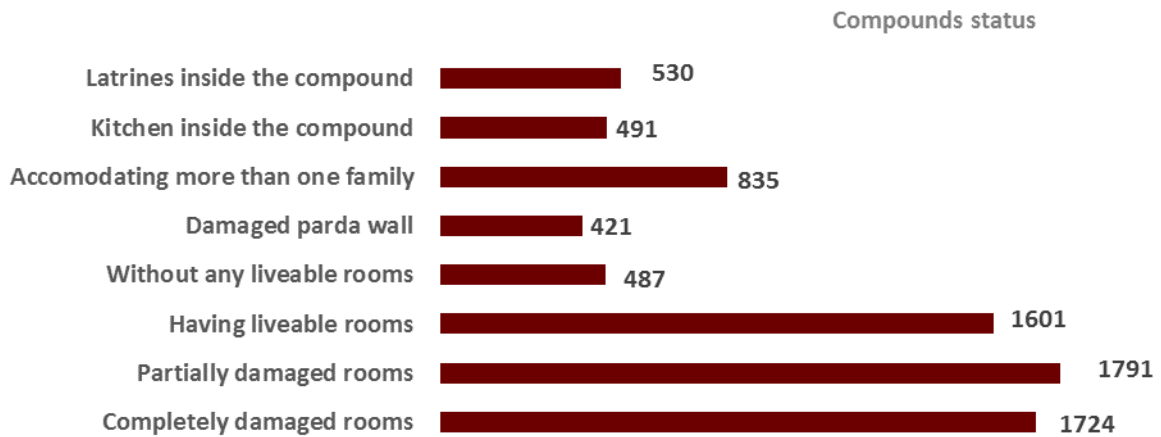
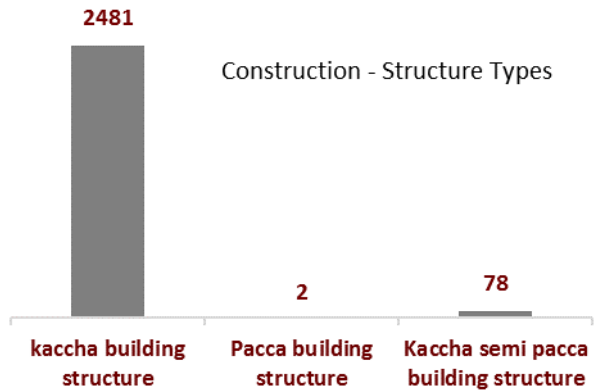
Provide general idea/information about the Households composition starting from the age breakdown of the Head of the household in the compound assessed, the data shows that 42% of HoH are between age 20 to 35 years old and 15% are above 60% years old.



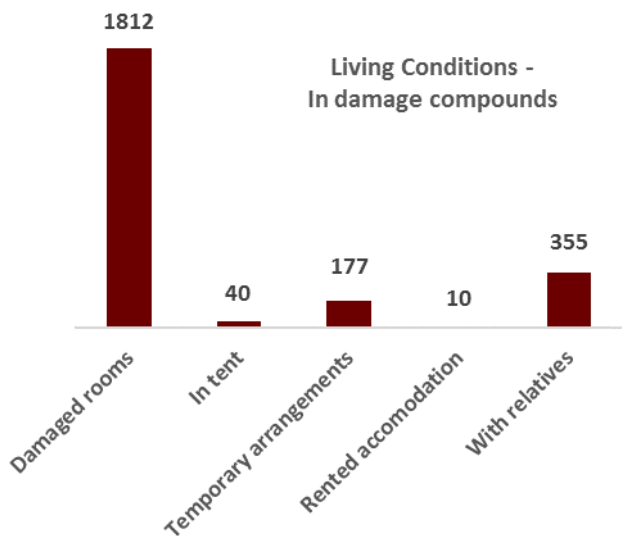
In addition, information were collected for the families who have members with special needs as part of the vulnerability criteria, information shows that just 2% of HHs are females and 2% of the HoH have physical disability.

**Information about current construction or structure types**

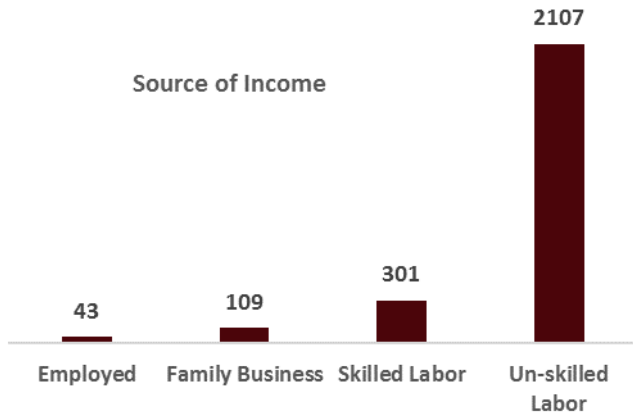
Provide information related to the construction/structure type available in the areas of returns, 97% of the returns HHs having Kaccha building structure, level of destruction in the compounds assessed and having additional housing facilities like latrines & kitchen.



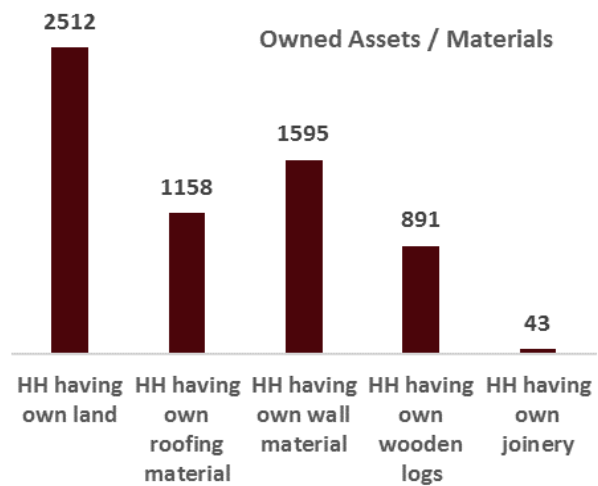
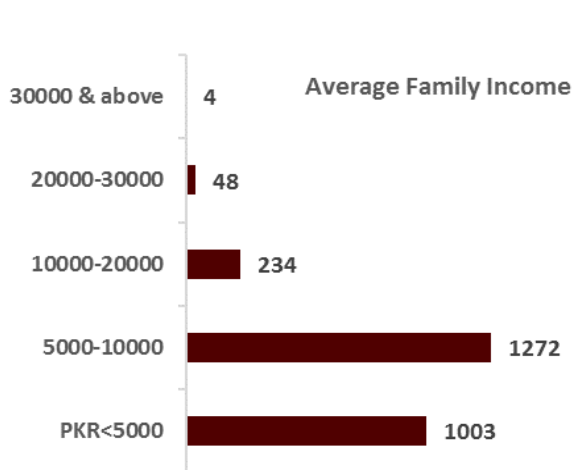
The information collected showed that all the returns HHs has a serious needs for the shelter assistance which reflect in the big percentage of assistance provided for the tents or tool kits, most of the surveyed HHs are living in the damaged rooms and the rest has different type of arrangements which are not suitable for long period and need further assistance and support.



**Source and Level of Incomes**

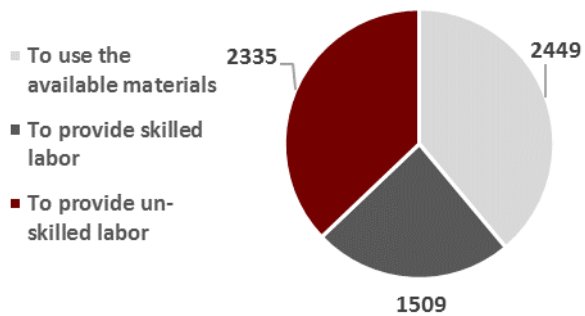


This part of information provide more comprehensive ideas about the source and level on income for the returns HHs, in addition to the owned assets & materials, the information collected shows that 82% of the HHs depends on their income on the un-skilled labour jobs, while just 2% are employed and 4% has family business.

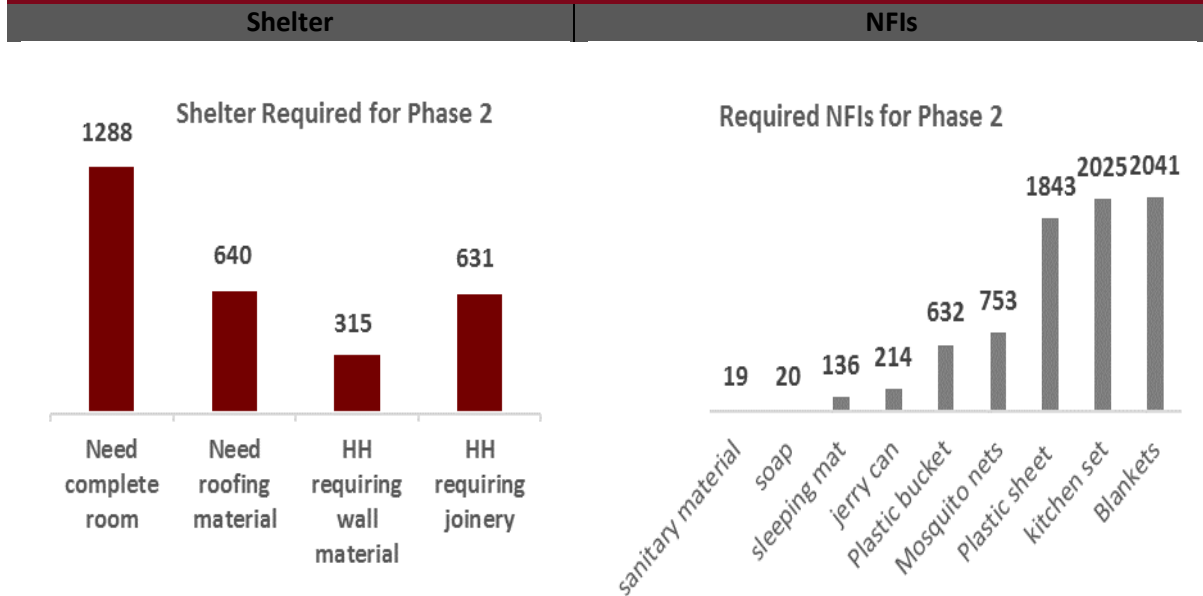


The average monthly income for 50% of the HHs is between 5000 to 10000, while 39% has less than 5,000 monthly income, which shows the needs to support those HHs in order to be able to manage the first stage of return in order to have the capacity to re-build their life and houses, in addition the information showed the willing of HHs to provide their owned available materials and skills to be part of the re-building of their houses.

**Self Support**



The assessment also collect information on the returnees requirement and priorities for assistance for phase two for both shelter and NFIs, to identify the priority for both from the returnees perspective and needs



**Challenges:**

- Uncertain security situation in the whole area of SWA and in particular the risky movement in the newly de-notified areas.
- The difficulties to search out and assess the newly arrived families among those families who were already present and living there.
- Rahdari and check posts caused delay during field visit Communication create big challenges when mobile network is not available.
- Access to some areas is extremely difficult due to condition of the roads and hilly terrain.
- Reaching the returning IDP families in the scattered area of return was a huge financial burden during the assessment.

**Lesson learnt**

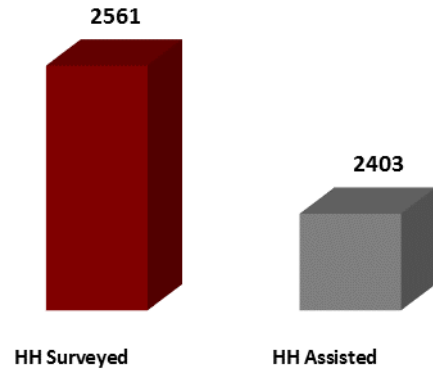
- House hold assistance criteria were too complicated, need to use the family as base criteria.
- Provision of shelter and NFI not only fulfils the initial need but also contributes to the much sustainable living.
- The community persons encourage and support the assessments if they are sure to get material assistance.
- One of the best practices is the coordination of the assessment and assistance by many of shelter members.



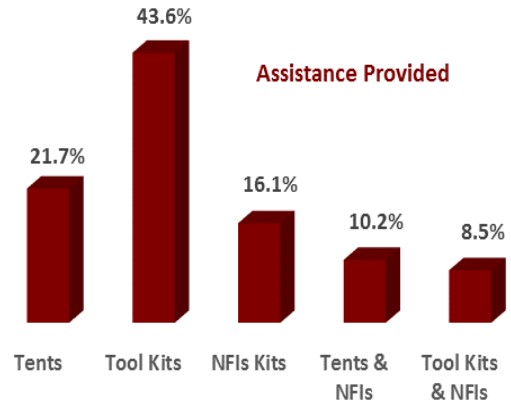
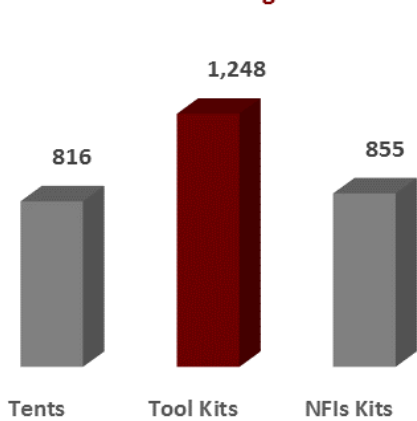
**Assessment & Assistance figures:**

Assessment had been conducted to all HHs return to SWA and who has valid VRF – based on compound basis to adapt the same living conditions system in that areas where families are living together in one compound and support each other.

- Total number of returnee villages **61**
- Total number of village surveyed 61.
- Total number of Families returns **3,238**
- 94% of the HHs returned had been assisted.**



**Distribution Figures**

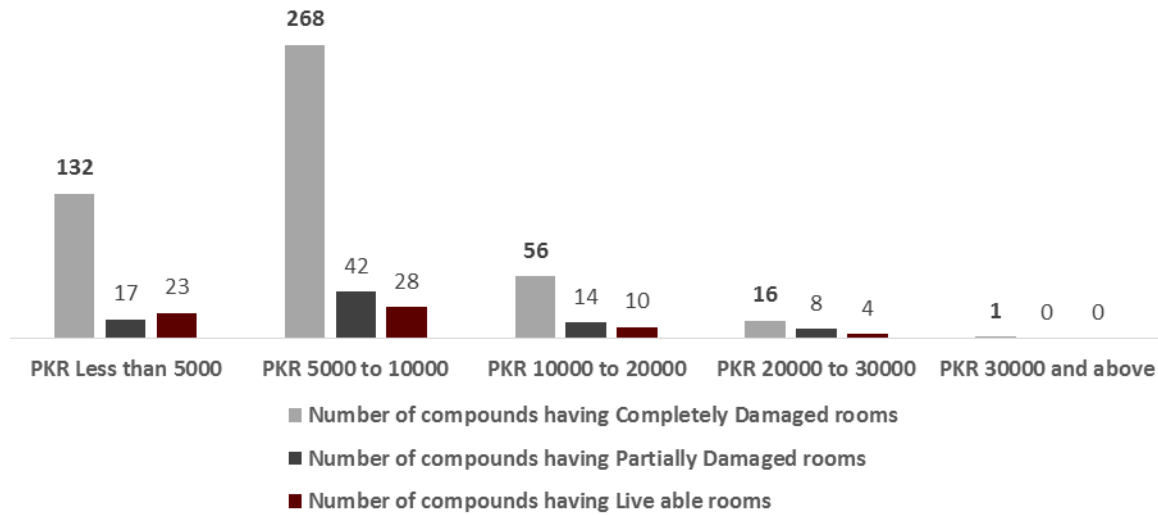




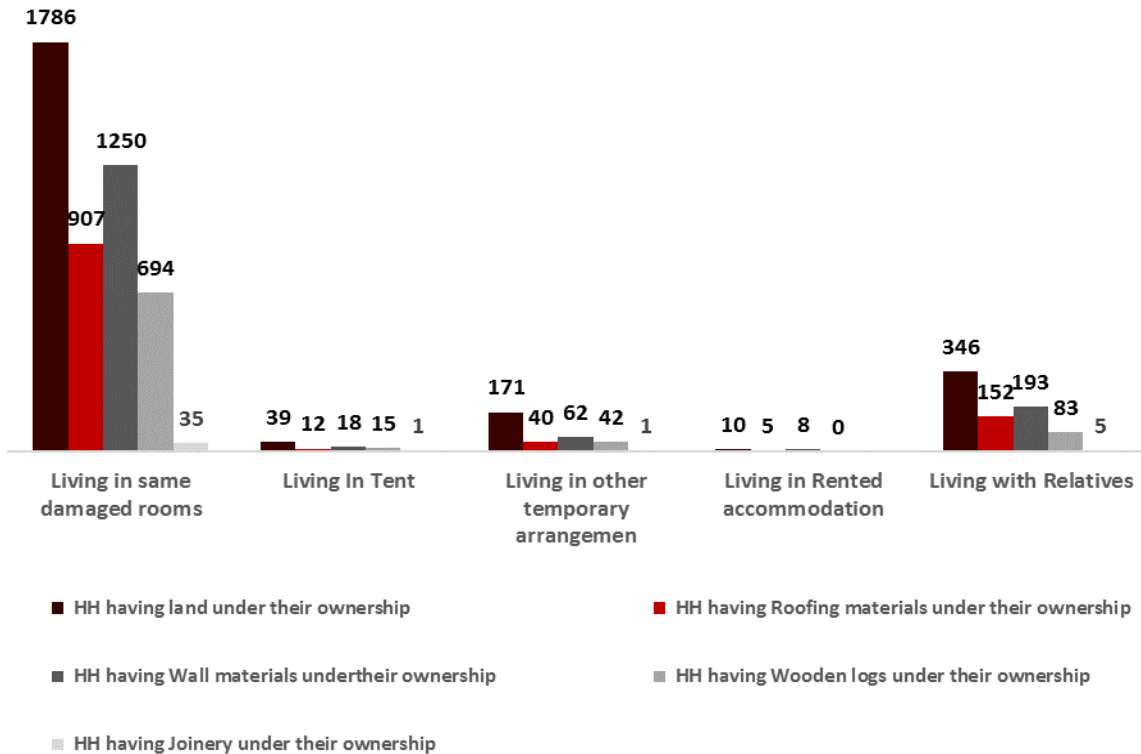
**Analysis for the assistance provision in the second phase of shelter cluster intervention**

As per the Shelter cluster frame work the phase two (transitional phase) is the provision of assistance to the returnees to rebuild their damage shelter through providing shelter materials and tool kits, the assistance will be provided on needs basis through the information collected and analysis from the assessment conducted in the phase one.

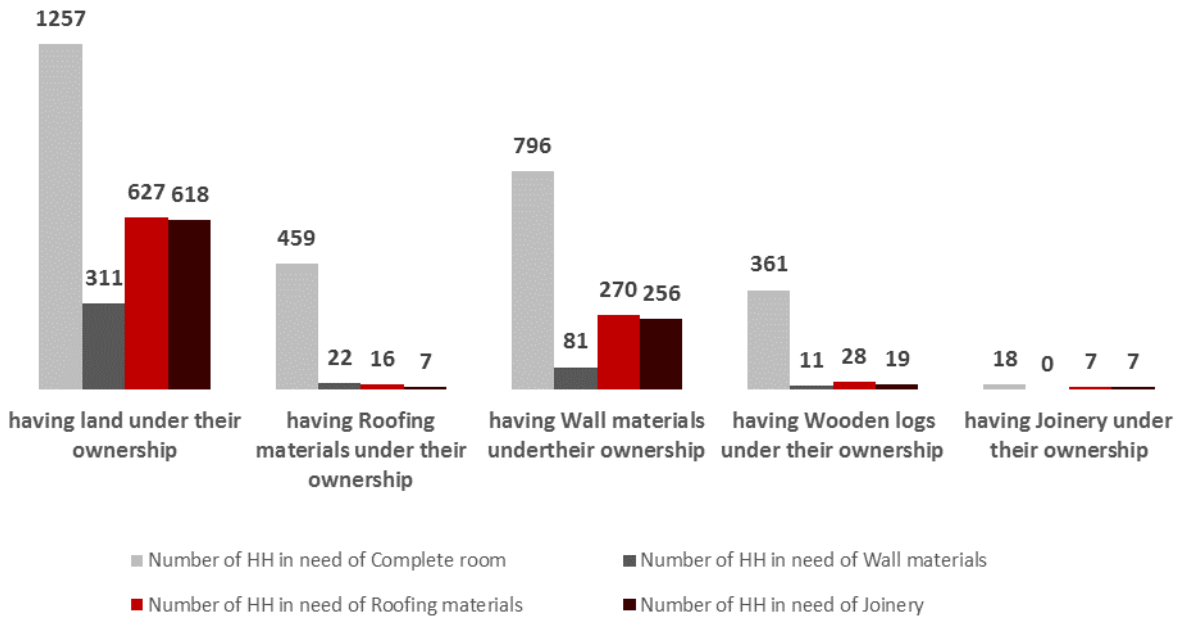
**Level of destruction vs average HH monthly income**



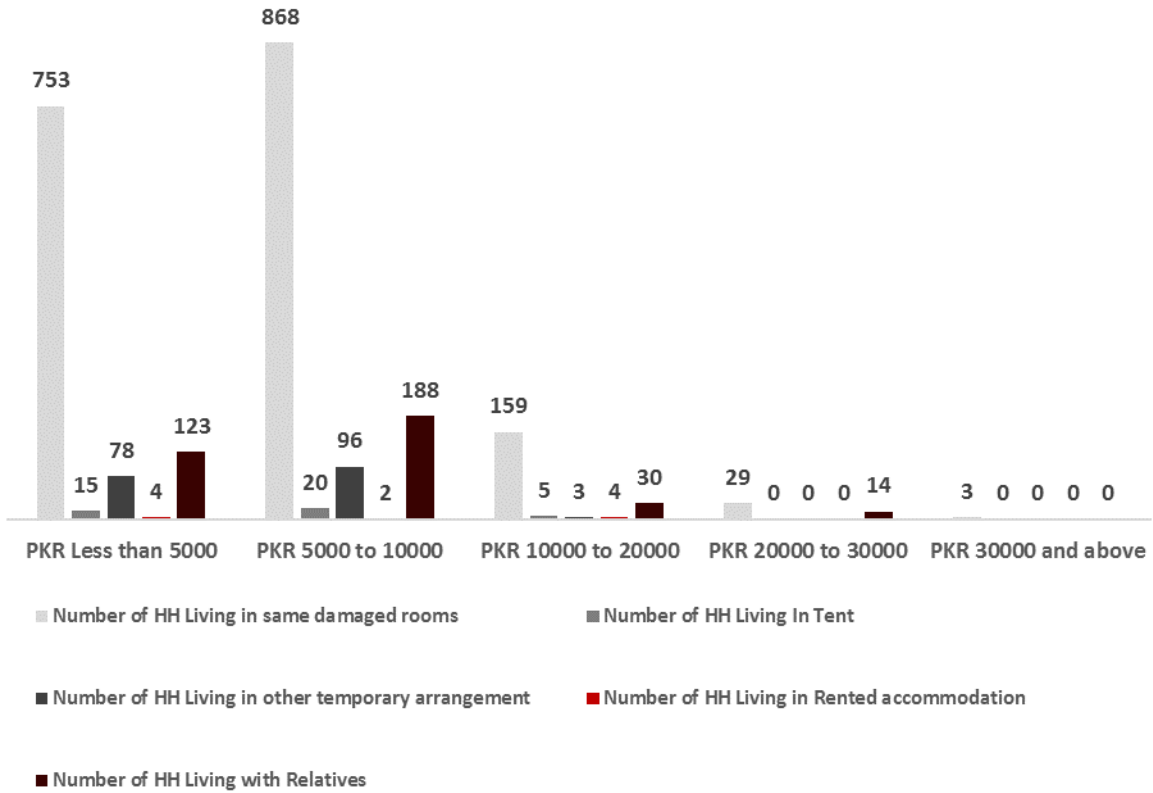
**Availability of Land & Useable Shelter Material under the Ownership of HoH VS Current Living Condition**



**Shelter Need Assessment for (Phase 2) Vs Availability of Land & Useable shelter material under the ownership of HoH**



**Current Living condition VS Average family Income/ Month of Families**



**General Information for the assessment and assistance**

<u>Assistance Provided by UNHCR</u>	<u>Assessment Conducted By</u>	<u>Composition of NFIs</u>	
* Tents	*SRSP	* Bucket	<b>2</b>
* Tool Kits	*FRD	* Jerry Cans	<b>2</b>
* NFIs Kits		* Sleeping Mats	<b>4</b>
		* Sanitary Material-sqm	<b>18</b>
		* Quilts	<b>2</b>
		* Blankets	<b>6</b>
		* Plastic Sheets	<b>2</b>
		* Kitchen Set	<b>1</b>
		* Soap (kg)	<b>1.5</b>
		* Mosquito Nets	<b>2</b>

Source: UNHCR, FRD, SRSP

For more information: Silva Alkebeh ([alkebeh@unhcr.org](mailto:alkebeh@unhcr.org))  
Fayaz Khan ([khanm@unhcr.org](mailto:khanm@unhcr.org))