



# DTM COVERAGE PROGRESSION: Accessibility Map

SOURCE: IOM DTM DATE: 21-07-2016

## DTM Round I: December, 2014

389,281 IDPs 60,232 HHs

DTM was rolled-out in the NorthEast covering five states with few LGAs unassessed due to access challenge.

## DTM Round II: February, 2015

1,188,018 IDPs 149,357 HHs

In Round II, DTM gained access to more LGAs in the North-East including two(2) LGAs in Borno State.

## DTM Rounds III and IV

April, 2015: 1,491,706 IDPs 194,145 HHs  
 June, 2015: 1,385,298 IDPs 188,547 HHs

In Round Three(3), more LGAs were assessed in Bauchi, Borno and the northern part of Adamawa State.

## DTM Round V: August, 2015

2,150,451 IDPs 300,992 HHs

DTM Round V expanded to two(2) more states: FCT(Abuja) and Nasarawa State. This resulted in a spike in the number of IDPs.

## DTM Round VI: October, 2015

2,233,506 IDPs 318,937 HHs

DTM Round VI captures two(2) additional states from the North central. This gave a cumulative of ten(10) states where DTM has been deployed.

## DTM Round VII: December, 2015

2,151,979 IDPs 313,575 HHs

DTM continued to expand its coverage with the addition of three(3) states: Benue, Zamfara and Kano.

## DTM Rounds VIII and IX - 2016

Feb, 2016: 2,241,484 IDPs 334,608 HHs  
 April, 2016: 2,155,618 IDPs 352,840 HHs

As more LGAs are being liberated in Borno, DTM continued to expand assessment covering more LGAs in Borno State.

## DTM Round X: June, 2016

2,066,783\* IDPs 344,564 HHs

As at June 2016, four(4) additional LGAs in Borno were assessed: Dikwa, Bama, Monguno and Ngazai

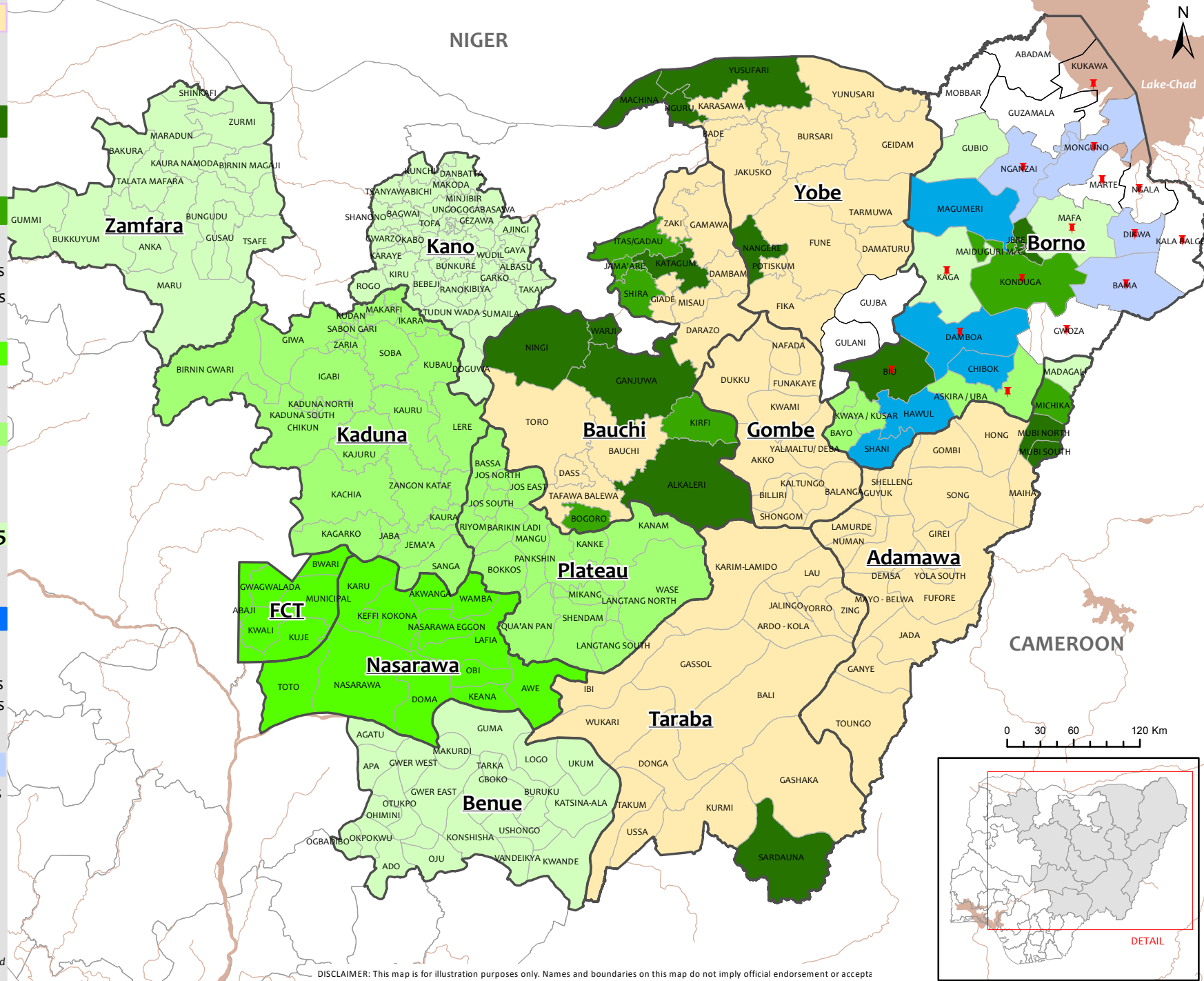
State Boundary  
 LGAs Yet to be accessed by DTM due to security constraint

IDPs Internally Displaced Persons

HHs Housholds

New Accessible locations and Satellite Camps

\* This figure does not include the number of IDPs in Munguno and Ngazai LGAs



DISCLAIMER: This map is for illustration purposes only. Names and boundaries on this map do not imply official endorsement or accept