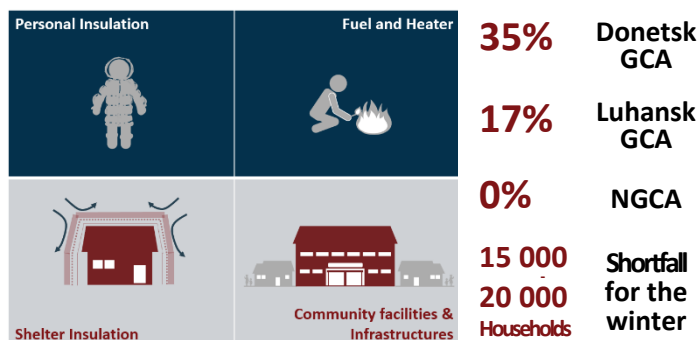
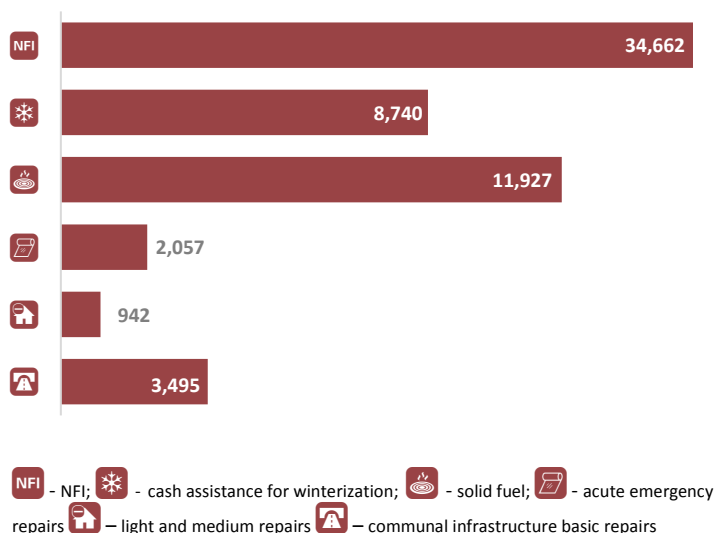




• **Triangulation Analysis of Damages in GCA:** In June, the Shelter Cluster requested REACH Initiatives to collect data along the contact line of local authorities about how many damages they had sustained and which per cent of people were still residing in damaged homes. The Shelter Cluster Team then analysed this information with the data provided by partners in the 5W and Damage Database. By calculating the average of these databases, the maps indicate which villages should be prioritized for follow up assessments and for primary shelter needs.



• **Large Gap for Covering Winterization Needs:** As funding levels continue to decline in Ukraine, a higher than expected volume of damages to homes has resulted in a paradoxical increase of the humanitarian needs. As of the end of August, coverage of winterization assistance had only reached 17% of what it was last year in Luhansk GCA and 35% of what it was in Donetsk GCA. Currently, there are not yet any planned activities for the great amount of needs in NGCA. The Shelter Cluster estimates that there are between 15,000-20,000 households still in need of winterization assistance prior to the onset of the snow and the declining temperatures.



KEY DATES

In the month of August, the harvest ceasefire gave way to the start of the school year ceasefire. Despite these declarations, 78 homes were damaged during the month of August. While this is the lowest month of damages for August 2017, the last few months of destruction has left hundreds of homeowners trying to winterize their homes prior to the start of the colder temperatures.

Activation of Cluster: December 2014

CLUSTER TEAM

Cluster lead agency: [UNHCR](#)
Co-Chair (Northern Donbas): [People in Need](#)
Cluster Coordinator
Igor Chantefort | coord.ukraine@sheltercluster.org
Cluster Co-Chair & Sub-National Coordinator
Reneé Wynveen | coord1.ukraine@sheltercluster.org
Shelter Associate
Kostyantyn Dmytrenko | dmytrenko@unhcr.org

KEY DOCUMENTS

Shelter/NFI Cluster strategy [ENG](#)
Monetization in the Shelter and NFI Sector in Ukraine [ENG](#)
Shelter Cluster Annual Report 2016 [ENG](#)
Recommendations on Winterization 2016/2017 [ENG](#)
Guidance on structural repairs and reconstruction [ENG](#) [UKR](#)
Technical Essay on Housing Situation in Ukraine [ENG](#)
[Cash assistance post-distribution monitoring report \(2015\)](#)
Common cash PDM core questions [ENG](#) [RUS](#) [UKR](#)
Evaluation of the Shelter and NFI Cluster in Ukraine [ENG](#) [UKR](#)

KEY LINKS

[3W online submission form](#)
[Warehouses for contingency Inter-Cluster update form](#)
[Who is doing what where and when interactive dashboard](#)
[Housing, Land and Property TWIG](#)
[Permanent Shelter Solutions and linkage to integration](#)

August at a glance



Source: HRP Ukraine 2017, 3W reports from partners. Cumulated figures for 2017
Note: number of Cluster partners is calculated monthly based on 3W reports which indicates number of humanitarian actors reporting to Cluster and operating in Ukraine in a particular month