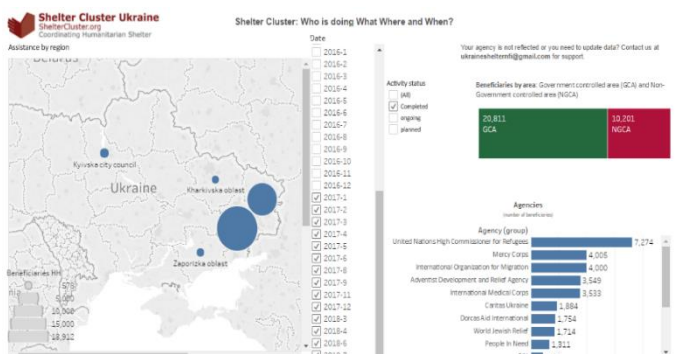




HIGHLIGHTS

- Quarterly update shows continuous flare-ups in shelling can shift significantly planning figures for 2017 acute emergency repairs:** The release of the March factsheet corresponds with the time of the quarterly update. 82% of Shelter and NFI assistance delivered during the 1st quarter of 2017 met the objective of life-saving assistance, corresponding with the end of winterization programming and the delivery of additional acute emergency materials for the increase of damaged homes in this reporting period. Repair interventions only represented 4% of activities in this last quarter due to the prevailing winter season. If the conflict continues at this continuous rate of regular shelling, it is likely that the forecast required amount of acute emergency and light repairs will have to be significantly revised.
- Finalization of Winterization Implementation:** In this last reporting period, partners finalized the implementation of their 2016-2017 programming. Partners also began consulting with the cluster in order to share lessons learned to begin inform the beginning of winterization activities for the next season. The final activities for winterization can be found on the [winterization matrix 2016-2017](#).
- Norwegian Refugee Council Pilot Program with heating briquettes:** The Norwegian Refugee Council piloted a program for 5 households to create their own heating sources for their homes while also stimulating livelihoods. Shelter partners will continue to learn from these experiences to provide alternative and sustainable fuel sources for
- Danish Refugee Council Discussion on Standardization of Acts of Destruction:** The Danish Refugee Council created an initiative to unify the critical elements of the acts of destruction for residential property, which has received avid interest from Shelter partners and the Housing, Land, and Property Technical Working Group and also local village councils. Critically, this is important to help those who incurred damages in 2014 seek justice especially as the statute of limitations for these acts of destruction may expire in July 2017 (3 years since the start of the crisis). Since 2014, acts of destruction have varied from formal to informal contents, which may create obstacles for those who have incurred damages to prove injury by conflict to their residential property.



[Who is doing what where and when? Online interactive dashboard up to Administrative 4 \(Village\) Level.](#)

KEY DATES

Throughout March, 40 -55 homes were damaged per week. Some key dates of damages were the **8th of March** when 7 homes were newly damaged in Zaitseve, the **26th of March** when 21 homes were newly damaged in Avdiivka, and the **30th of March** when 12 homes newly damaged in Yasynuvata, and several surrounding communities such as Donetsk, Novooleksandrivka, Popasna, and Sentianivka also reported damage to housing. Also in March, cluster partners revealed new assessment data, which showed that IDPs continued to report **strained coping mechanisms to afford the expense of renting, utilities, and heating**, highlighting the need for durable solutions in terms of access to housing.

Activation of Cluster: December 2014

CLUSTER TEAM

Cluster lead agency: [UNHCR](#)

Co-Chair (Northern Donbas): [People in Need](#)

Cluster Coordinator

Igor Chantefort | coord.ukraine@sheltercluster.org

Cluster Co-Chair & Sub-National Coordinator

Reneé Wynveen | coord1.ukraine@sheltercluster.org

Shelter Associate

Kostyantyn Dmytrenko | dmytrenko@unhcr.org

Subnational Technical Assistant

Igor Moroz | igor.moroz@peopleinneed.cz

KEY DOCUMENTS

Shelter/NFI Cluster strategy [ENG UKR](#)

Monetization in the Shelter and NFI Sector in Ukraine [ENG](#)

Shelter Cluster Annual Report 2016 [ENG](#)

Recommendations on Winterization 2016/2017 [ENG RUS](#)

Guidance on structural repairs and reconstruction [ENG UKR](#)

Technical Essay on Housing Situation in Ukraine [ENG](#)

[Cash assistance post-distribution monitoring report \(2015\)](#)

Common cash PDM core questions [ENG RUS UKR](#)

Evaluation of the Shelter and NFI Cluster in Ukraine [ENG UKR](#)

KEY LINKS

[3W online submission form](#)

[Warehouses for contingency Inter-Cluster update form](#)

[Who is doing what where and when interactive dashboard](#)

[Housing, Land and Property TWIG](#)

[Permanent Shelter Solutions and linkage to integration](#)

March at a glance

NFI

2344 HHs
received NFIs

600,000
Total people in need



5289 HHs
received solid fuel assistance

300,000
Cluster target population



636 light and medium repairs

40
Cluster partners

Source: HRP Ukraine 2017, 3W reports from partners
Note: number of Cluster partners is calculated monthly based on 3W reports which indicates number of humanitarian actors reporting to Cluster and operating in Ukraine in a particular month