

Chad Shelter Cluster - Update on shelter intervention in Chad



October 15, 2020

Displacement Overview

Target Population for the Chad Shelter Cluster

 **854,670**
People in Need

 **420,000**
People Targeted

 **22**
Partners

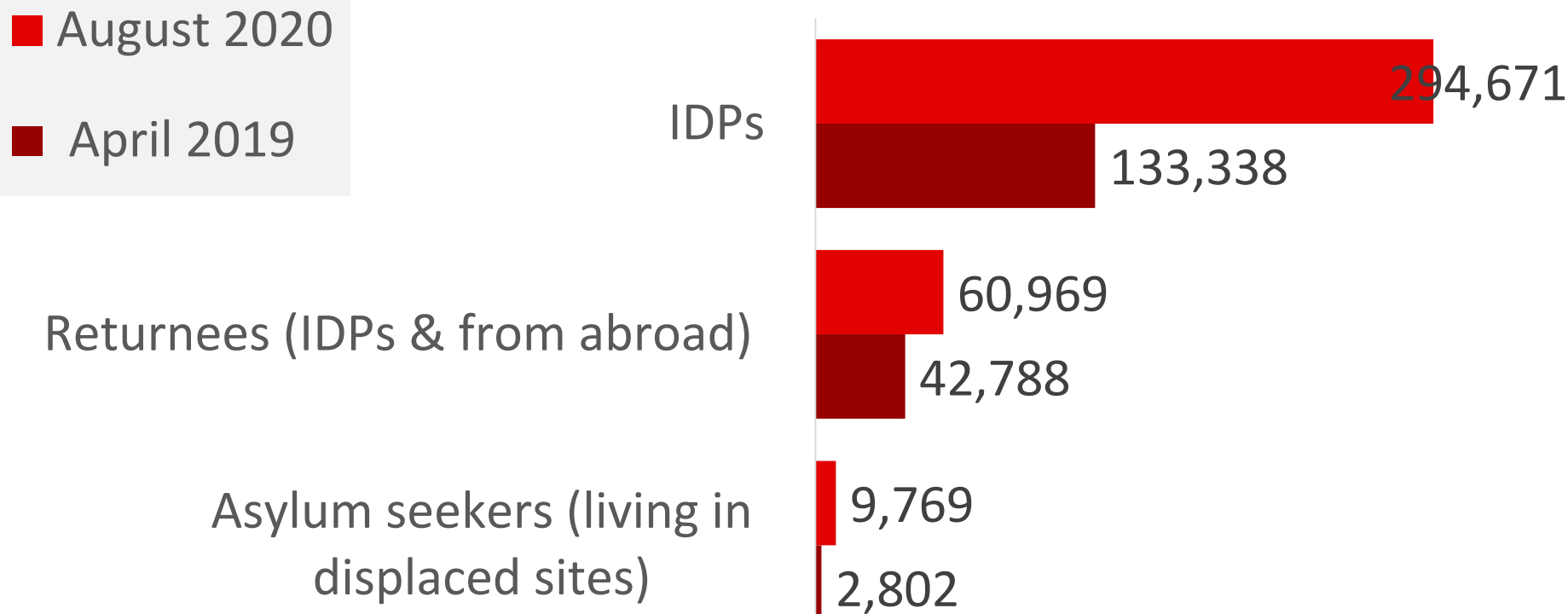
People displaced by the conflict in Lake Chad Province (August 2020):

- 294,671 displaced Persons (IDPs)
- 60,969 Returnees (former IDPs & from abroad)
- 9 769 Asylum seekers

Settlements

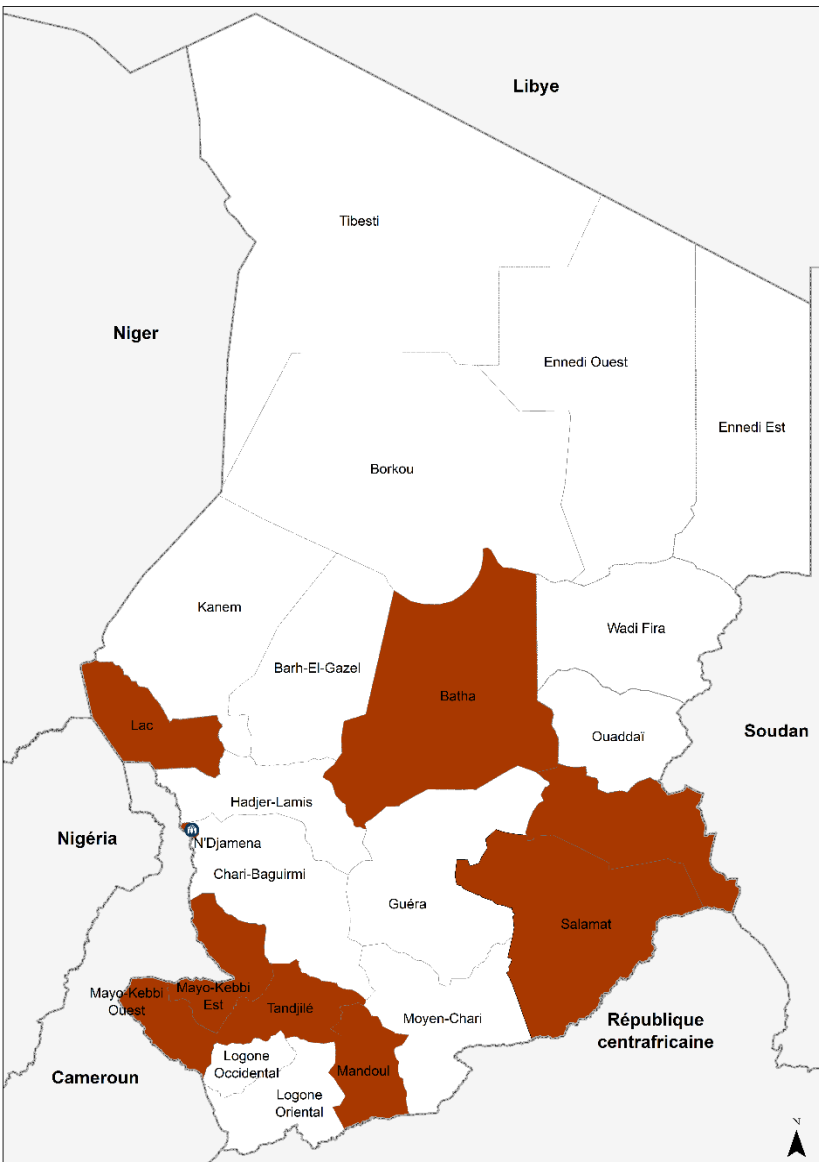
- 77% of IDPs are living in displacement sites.
- 23% of IDPs are living in Host Communities

The number of displaced people is constantly increasing



Remark: From August to September 2020: 7 300 households of 33 800 IDPs are still pending to be validated by the Cluster.

People displaced by Floods (Estimated Figures by the Chad government)



Lake Province: 33 000 IDPs (>6 000 HH)

Mayo Kebbie Est: 62 000 IDPs

N'djamena Capital City: 32 000 IDPs (5800 HH)

Batha East (Oum-Hadjer): 20 000 IDPs (5 133 HH)

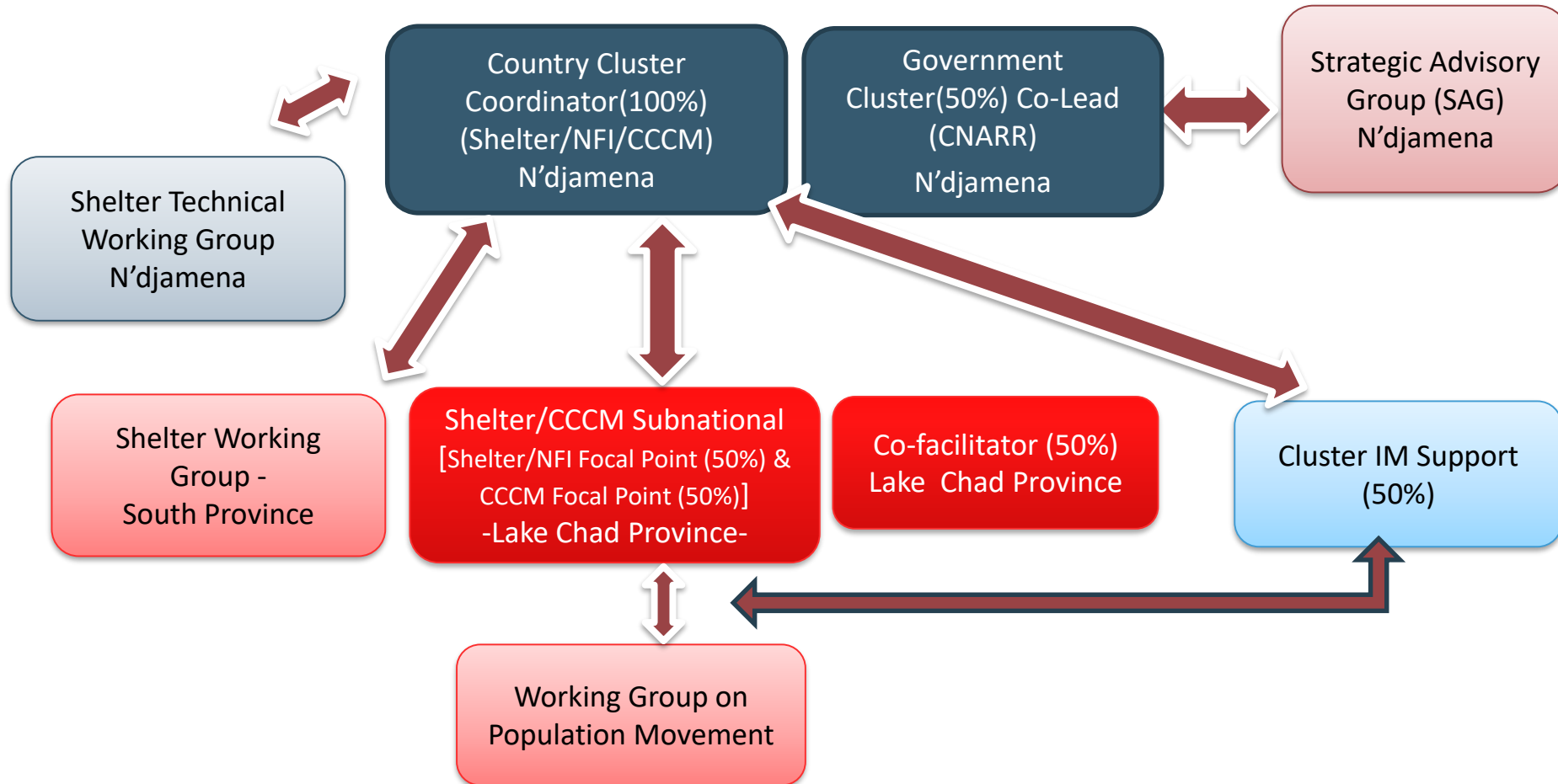
Salamat: 15 000 IDPs (3 294 HH)

Sila (Kerfi): 530 IDPs (100 HH)

Tandjile: 80 000 IDPs

Mandoul: 27 000 IDPs (Interagency assessment)

Cluster Coordination Structure



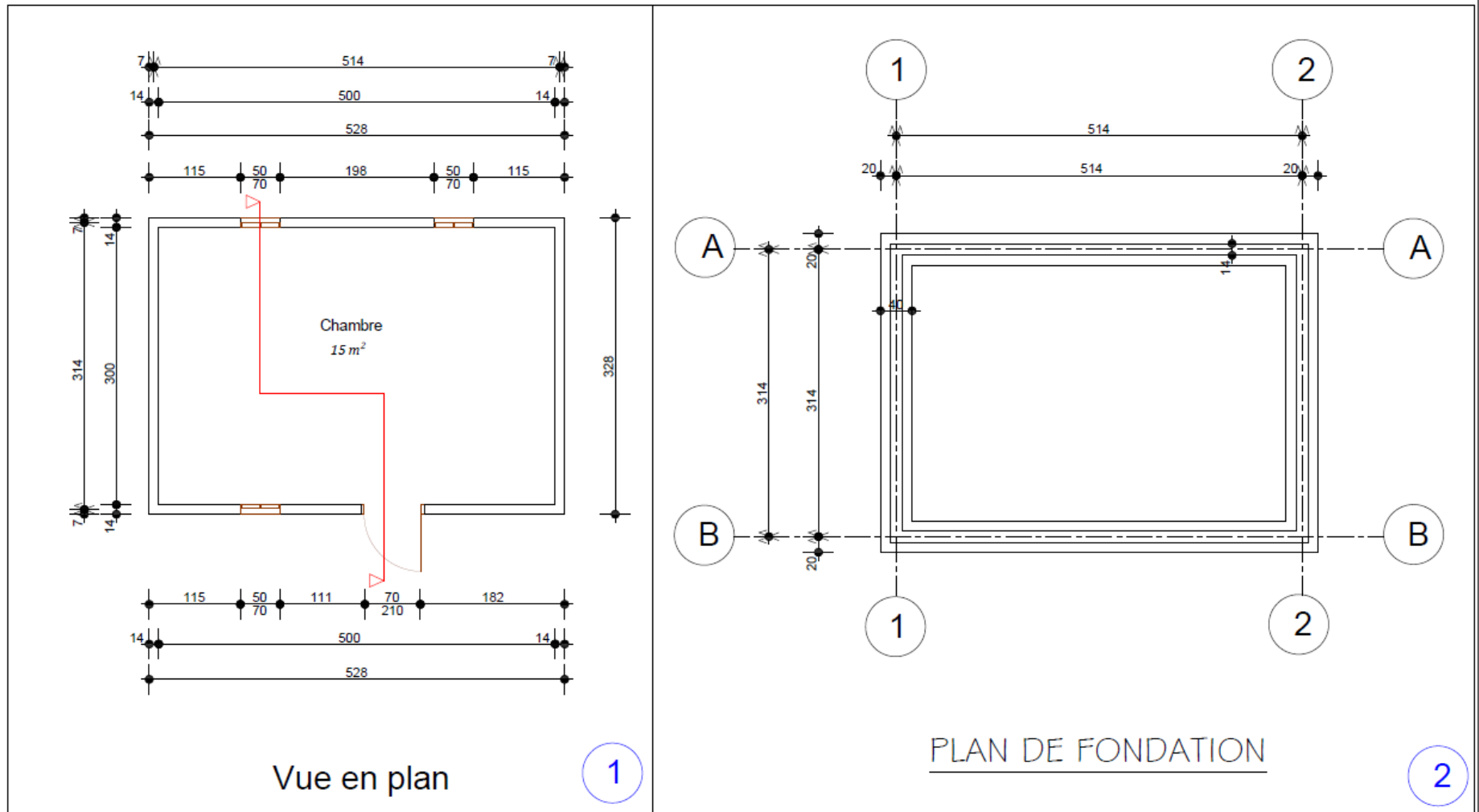
Shelter/NFI Cluster Members and Partners and CCCM Cluster Members and Partners

Chad Shelter Strategy (under review for more visibility of each cluster)

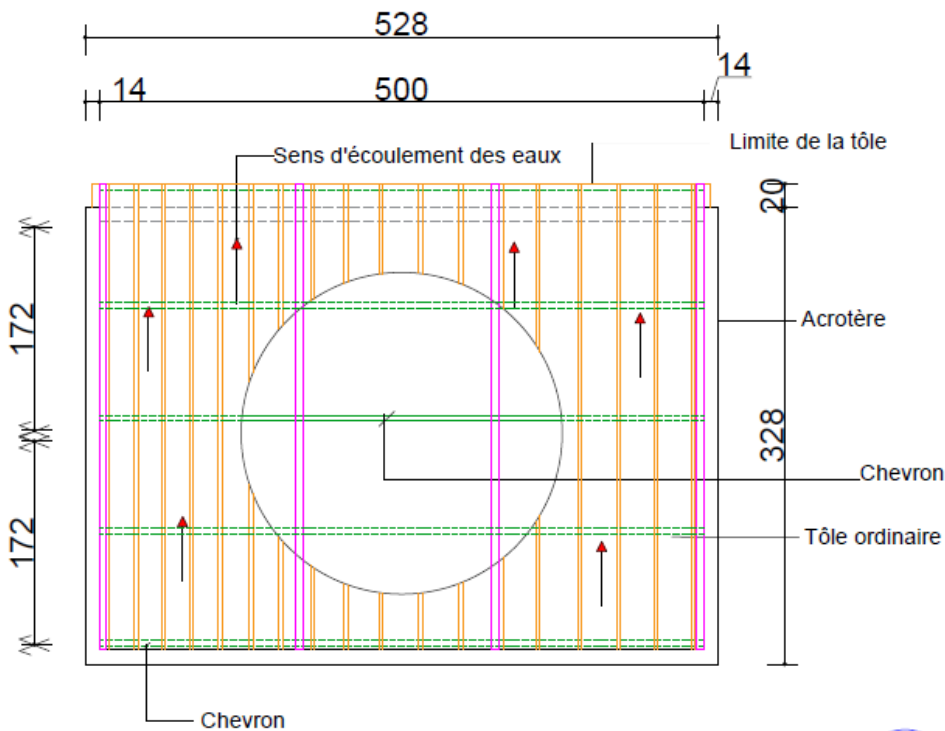
Through shelter/NFI partners, the Shelter Cluster developed the strategy to:

- Assist people newly displaced with emergency shelters and NFIs
- Assist protracted IDPs with transitional shelters or permanent shelters
- Assist IDPs who reintegrated the displacement sites or returned with the semi-permanent or permanent shelters
- Cash for work as an opportunity to increase income

Permanent Shelter built in South of Chad- Floor Plan

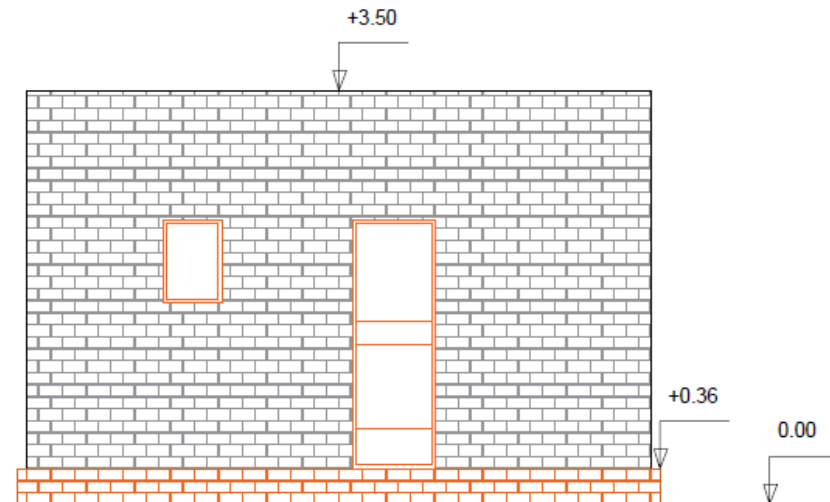


Permanent Shelter built in South of Chad- Roof Plan and front elevation



Plan de toiture

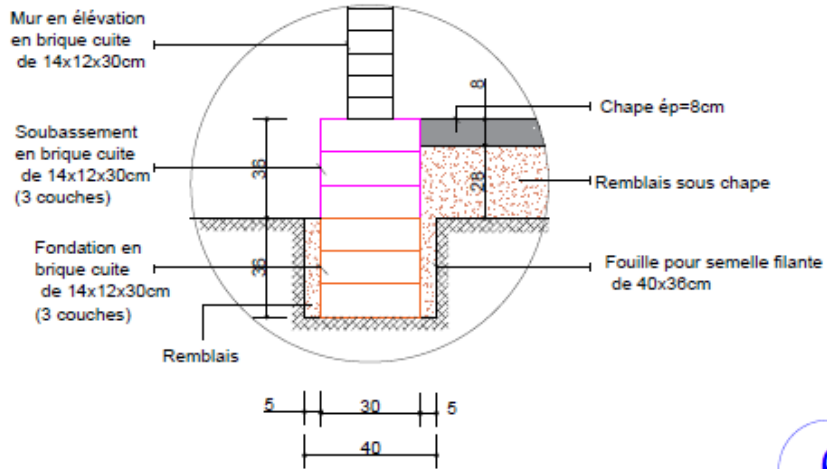
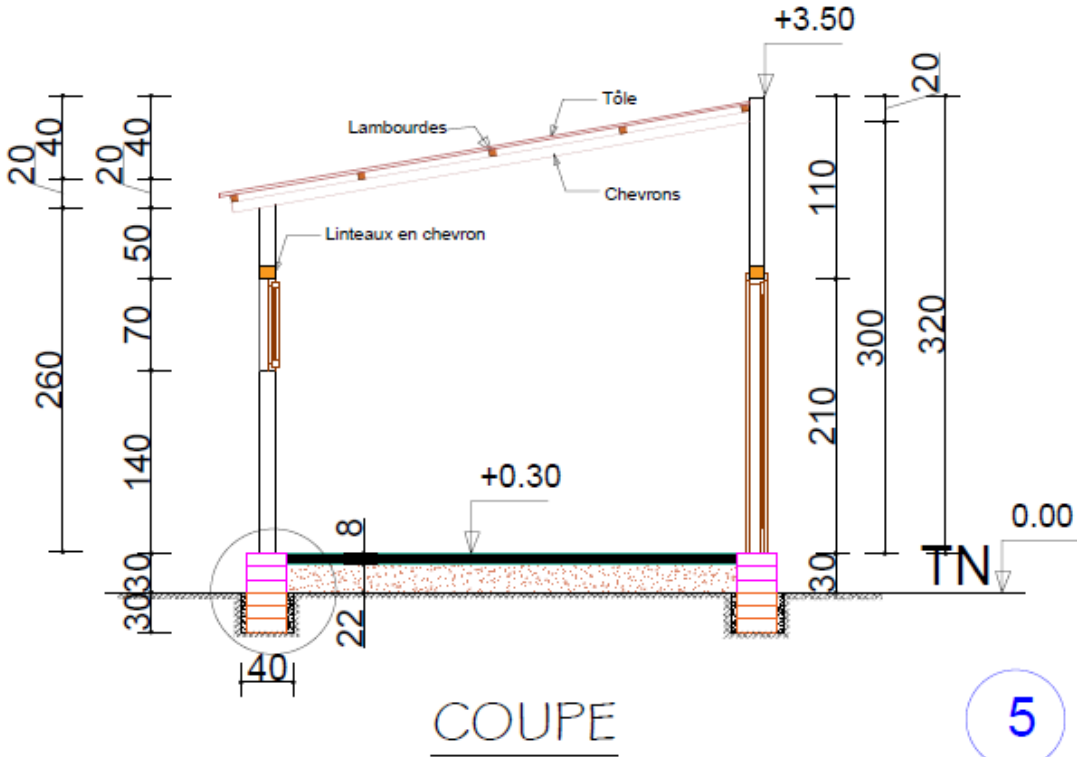
3



Façade principale

4

Permanent shelter built in south of Chad-Section Plan

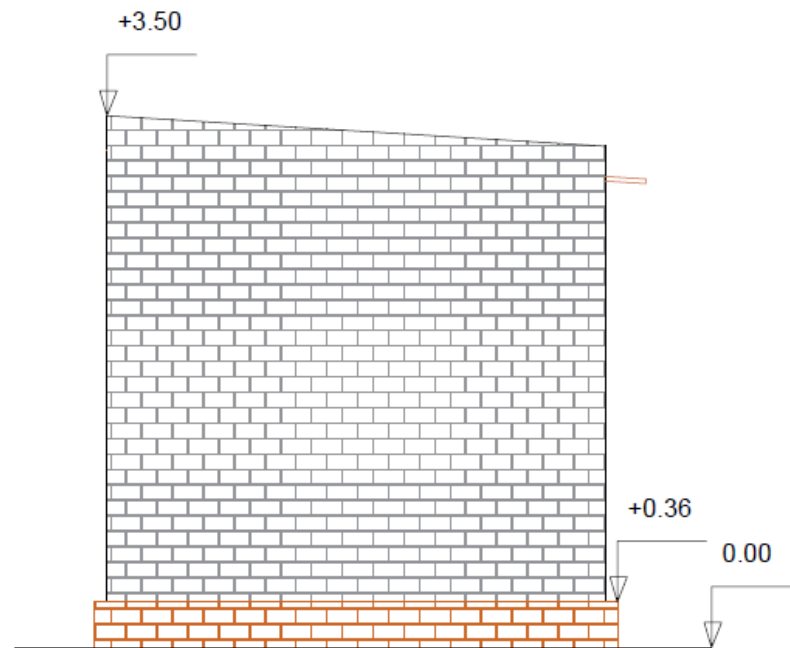


Permanent Shelter built in South of Chad- rear and right side elevation



Façade arrière

7



Façade Latérale droite

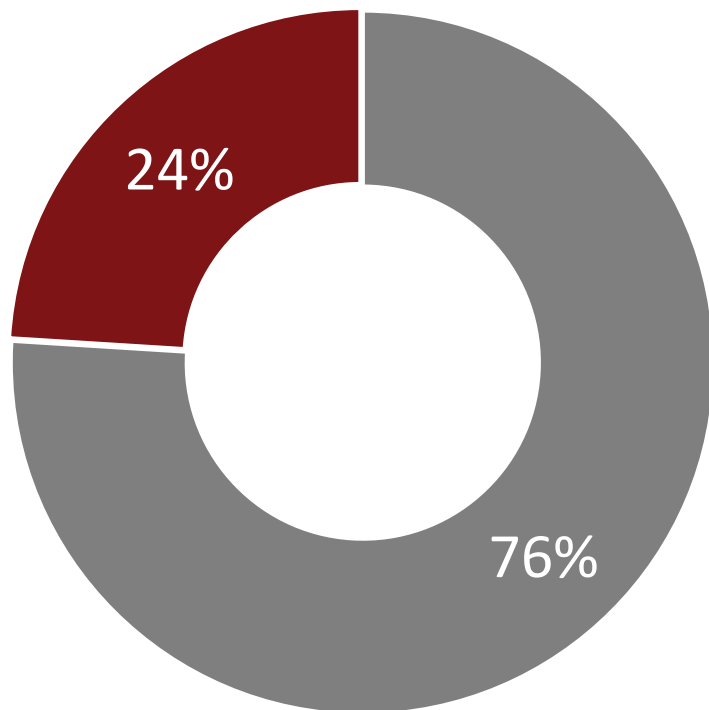
8

Permanent shelter build in Southern of Chad-Walls and roof view



Budget needed in 2020

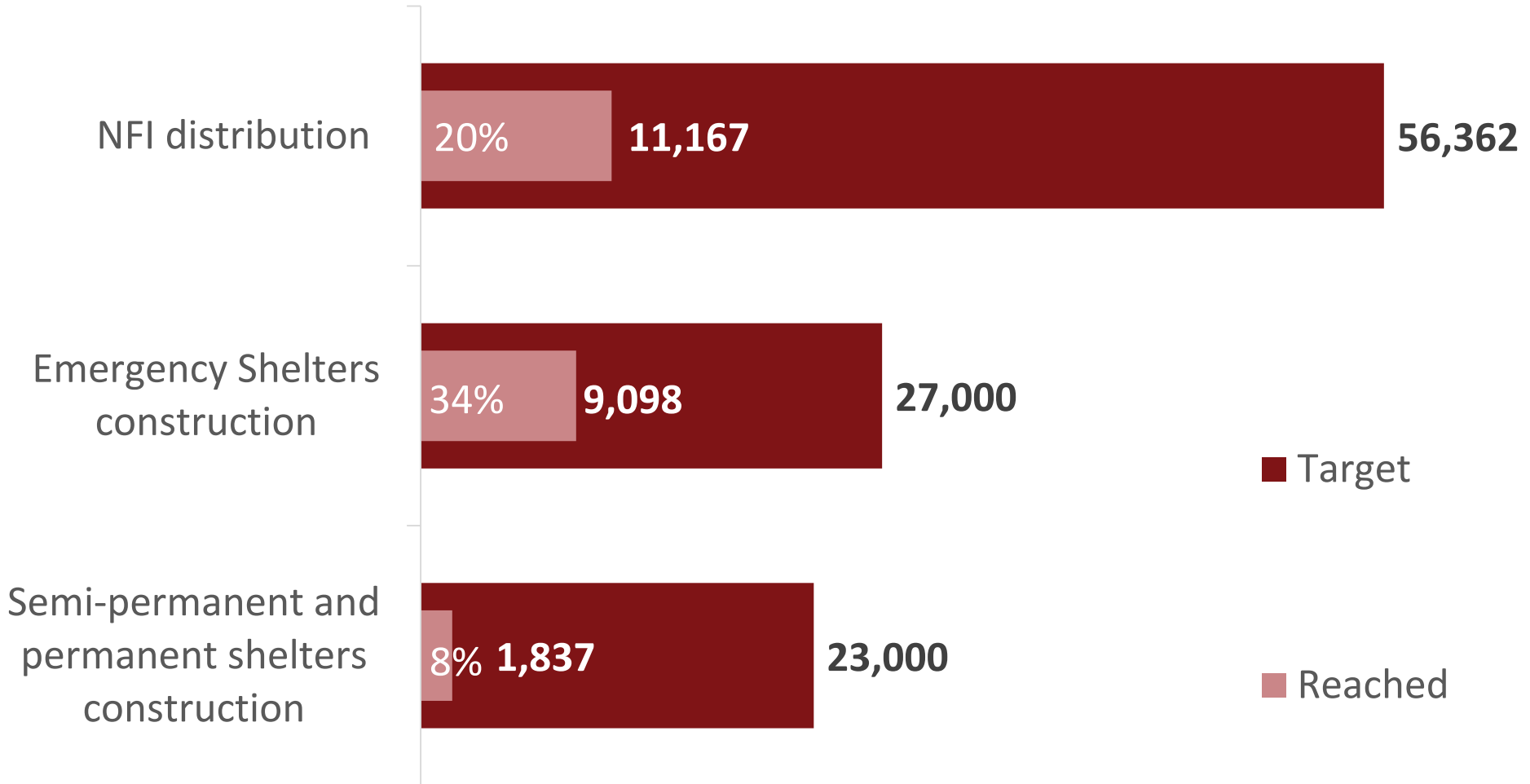
In Millions of Dollars



- Budget required
- Budget received

- **Budget required:**
21,9M \$
- **Budget received:**
5,26M \$

COVERAGE AGAINST TARGETS (HH)



Achievements (January to September 2020)

In Lac Province, the Shelter Cluster provided the response through partners

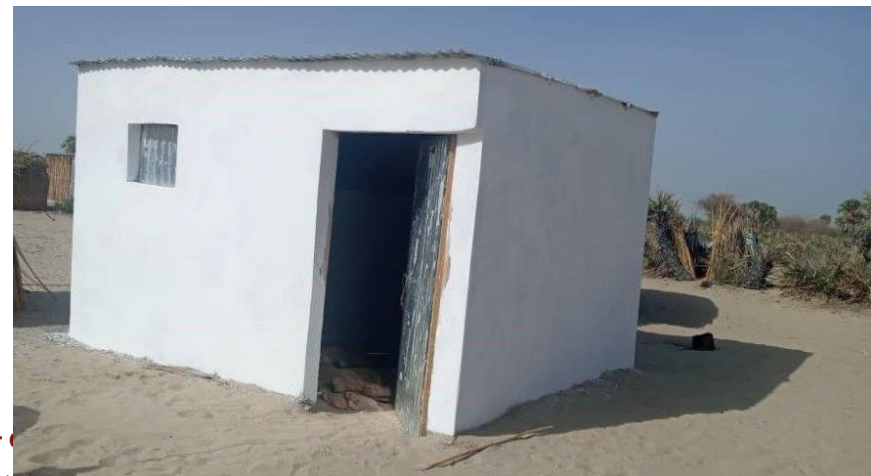


- Availability of Shelter and NFI needs through multisectoral assessments
- NFI distribution to 11,167 Households


Achievements (January to September 2020)

In Lac Province, the Shelter Cluster provided the response through partners

- Shelter construction (Emergency shelters) to 9,098 households
- Shelter construction (Semi-permanent and permanent shelters) to 1,837 households
- Cash for work for youth



Flood shelter response in N'Djamena

- Interagency assessment led by the Government (Ministry of Women and National solidarity)
 - 3 settlement sites provided by the Government (Tradex, Basilique and Melezi)
 - Establishment of Flood crisis committee including ICC members
 - Coordination meeting of the Flood crisis committee every Friday co-chaired by the Ministry of Women, Social action and National Solidarity and Ministry of Economy and Development.
- 
- 100 emergency shelters constructed in Tradex site with collaboration with many actors (Government, UNICEF, UNHCR) under supervision of Shelter Cluster and cooperation of WASH Cluster for 25 latrines and 3 water pits installations.

COVID-19 Response

- Hygiene kits distributed to 22,103 IDPs
- 2595 emergency shelters constructed in respect of COVID-19 prevention measures;
- 50 laborers trained in COVID-19 prevention measures;
- 12 tents distributed to District Health Center for quarantine/Isolation of suspected cases.

Challenges and lessons learned

Challenges:

- A lot of shelter needs while few NGOs received funds following the projects submitted through HRP
- No contribution to shelter/NFI response from the Government for IDPs located in Lake Chad Province
- Very low shelter response in the provinces affected by floods
- COVID-19 pandemic outbreak impacted the planning of shelter interventions.
- Returnees from abroad who settled in displacement sites

Challenges and Lessons learned

Lessons learned:

- Proactivity and commitment of the Government to flood crisis response.
- Shelter Cluster advocacy supported twice by HCT for getting funds from CERF
- Good collaboration between Shelter Cluster and RRM for the benefit of IDPs.

QUESTIONS!