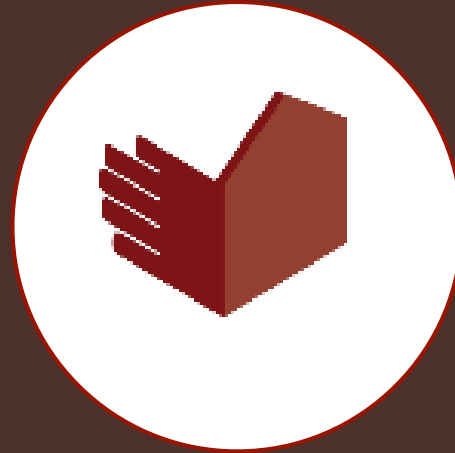


Shelter NFI Sector Libya

ShelterCluster.org

Coordinating Humanitarian Shelter



Shelter & NFI monthly meeting

8 June 2021

11:00 – 12.00 (LBY time)

Please introduce yourself in the chat

1. Introduction
2. Updates from the Partners
3. Shelter update from DRC
4. Updates from the Sector, incl. Information Management
5. AOB



2. PARTNER UPDATE

In reverse alphabetical order – well almost!

- UNHCR
- INTERSOS
- DRC
- CESVI
- IOM
- NRC
- PUI (no update)
- CEFA (no update)



2. PARTNER UPDATE (UNHCR)

Shelter:

UNHCR work through the partnership with NRC on the shelter rehabilitation project in East and West regions:

East:

Target:

1. Rehabilitation for 95 shelter units (65 urban & 30 in IDP settlements).
2. Camp Communal Infrastructure Rehabilitation for 2 IDPs camp.

Updated progress:

1. Assessments and Technical documents have been finalised. The tender for the first round (24 house unit at Alsabry, 2 camp infrastructure, and 30 shelter unit at Al Hilies) has been announced.
2. Assessment for the registered 70HHs in AL Sabri has been completed.

West:

Target:

1. Community infrastructure solutions in urban areas (south of Tripoli / Abusalim Municipality) that have been directly affected by the conflict, the project aims at providing infrastructure solutions to promote safe and adequate access to basic services.

Updated progress:

1. Coordination with DCA in assessing potential areas of operations in south of Tripoli.



2. PARTNER UPDATE (UNHCR)

NFIs (May)

- During May 2021, UNHCR managed to reach to 97 HH, 801 individuals mainly refugees, asylum seekers and migrants with NFI's and CRI's.
- In the east, 801 individuals, 527 (243 males / 14 females) have been reached at detention centers (Ejdabya, Alkufra and Ganfouda), while in the west, specifically in Tripoli, 394 were reached at the CDC, and 21 individuals at the TNB (Tripoli Naval Base).
- Throughout the month of May, a total of 579 HKs and 4,564 CRI's have been distributed at the CDC, TNB and DCs.

Planned:

- IDPs in Benghazi who are from Murzuq
- Mabani – Abu Salim DC
- Wishka and Abu Grain (Central Region)
- AlBayda, Shahat and Tobruk DCs (East)
- Asabaa' area



4. PARTNER UPDATE



Quick Impact Projects - UNHCR

Selection of Quick Implementation Projects: 3 out of 13 QIPs have been identified, 10 QIPs are currently under identification

Identified QIPs:

- Women Empowerment Center – Tripoli, Hay Al-Islami;
- Libyan Korean Center – Tripoli, Ras Hassan;
- Azzawiya Vocational Center – Azzawiya.

Implementation of QIPs:

Project staff is currently conducting **in-depth assessment of the above-mentioned locations** in order to write each specific QIP

Women Empowerment Center: installation of prefabs (3 m width, 6 m length, 2.4 m height) took place on 07.06



2. PARTNER UPDATE



Donor: SDC

Duration: 1.2.21 – 31.5.22

Area: Tripoli

Target group: solely determined on vulnerability, not status

Target number:

- shelter rehabilitation: 864 individuals
- NFI distribution: 864 individuals



2. PARTNER UPDATE – CESVI

NFIs distribution

Location: Misrata, urban areas
Target groups: Non-Displaced, IDPs, Refugees, Migrants
Modality of distribution: Door to door, and distributions at the Ministry of Social Affairs (MoSA) premises in Misrata.

May update:

- Carried out a large Hygiene kit distribution at MoSA, which will conclude in early June –approx. 800+ Non-displaced beneficiaries
- MoSA is working with different actors, so challenges in coordination with the MoSA as competing distribution take place in the same location/timeframe
- Continuing door to door distributions in UA of Misrata

Cash for rent : activity ongoing in Misrata. No major updates.



2. PARTNER UPDATE

Verbal Updates:

- IOM
- NRC
- PUI (no update)
- CEFA (no update)

Any other updates from participants?

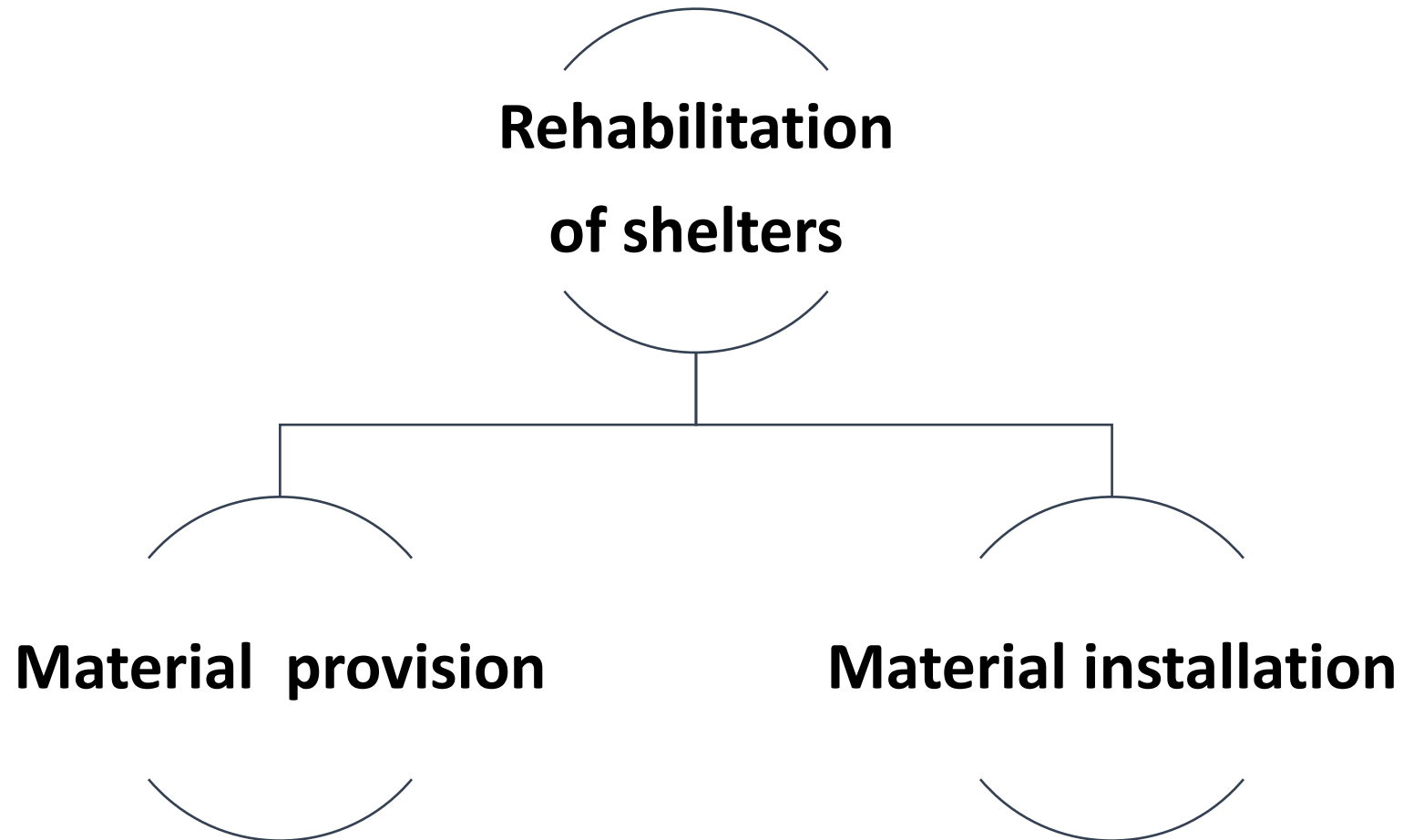


3. Shelter update from DRC

- Internal Displaced persons (IDPs) sites
- Mixed migrants' sites
- Returnees' shelters' units



Rehabilitation of shelters results in the two components:



Shelter rehabilitation – IDPs response.

Improving shelter safety condition by providing door lockers



Shelter rehabilitation

Improving shelter safety and privacy conditions by providing and installing doors



Shelter rehabilitation

Increasing access to water within the site by providing water networks and water pumps.



Shelter rehabilitation

Improving shelter sanitation facilities By providing and installing water mixers



Shelter rehabilitation

Improving shelter sanitation facilities By providing and installing water mixers/basins



Shelter rehabilitation

Improving hot water availability by providing and installing water heaters



Shelter rehabilitation

Improving sites' electrical system conditions by providing and installing protection pipes and switches/brakers.



Improving shelter lighting by providing and installing lamps



Shelter rehabilitation

Improving shelter internal walls conditions by providing painting and tools.



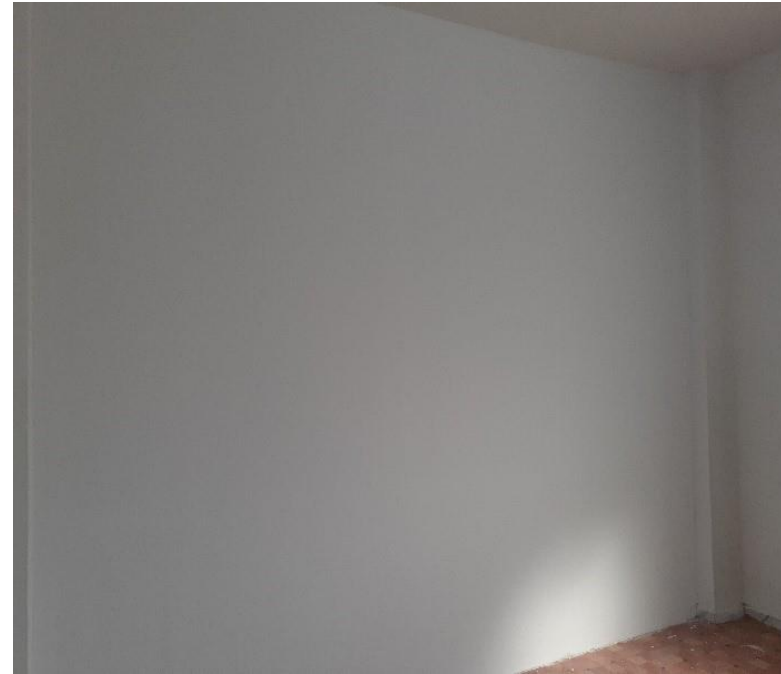
Shelter rehabilitation

Improving shelter internal walls conditions by providing painting and tools.



Shelter rehabilitation

Expanding shelter space by creating internal partitions.



Improving beneficiaries' protection and privacy by providing and installing windows



Shelter rehabilitation

Improving gender segregation and privacy by providing and installing internal partitions and curtains



Shelter rehabilitation

Expanding shelter space by rehabilitating un-used rooms.



Shelter rehabilitation

Creating safe/clean site space by cleaning the garbage and installing metal shadow.



Shelter rehabilitation

Improving site safety condition by providing and installing rail hands.



Shelter rehabilitation

Improving shelter safety condition by supporting the poor callings' conditions.



Shelter rehabilitation

Improving shelter safety condition by providing and installing protection pipes and electrical switches.



Shelter rehabilitation

Improving shelter facilities by creating kitchen space with full service



Shelter rehabilitation

Improving shelter condition by providing cleaning the garbage and sealing- off shelter rooms.



Shelter rehabilitation

Increasing sanitation facilities access by installing additional Portable latrines



Shelter rehabilitation – Returnees Response

Delivering **shelter materials** to the selected returnees' families.



Shelter rehabilitation

Delivering **shelter materials** to the selected returnees' families.



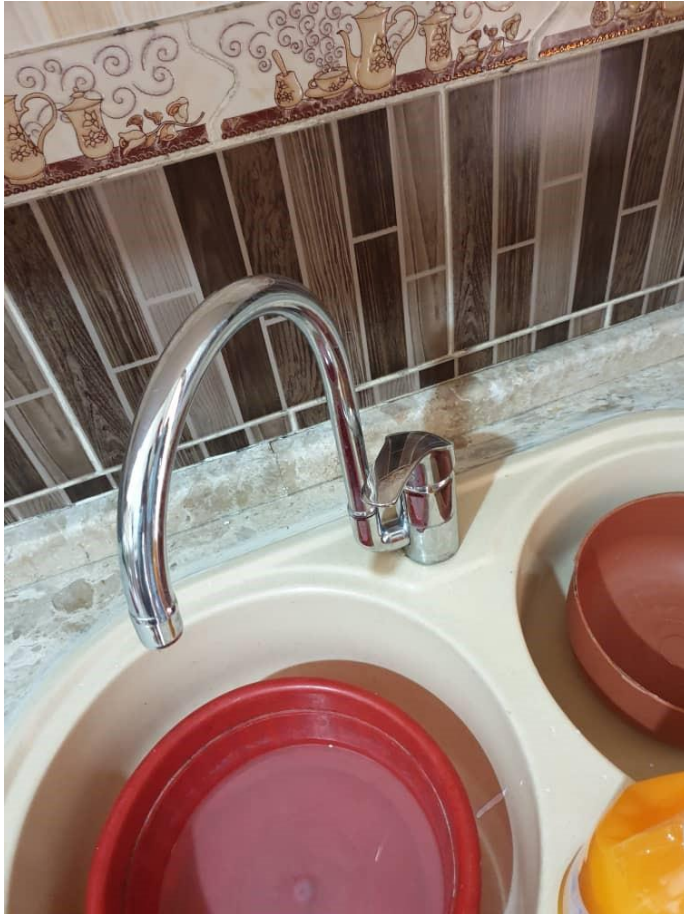
Shelter rehabilitation

Installed provided shelter materials by **beneficiaries** to enhance their shelters condition



Shelter rehabilitation

Installed provided shelter materials by **beneficiaries** to enhance their shelters condition



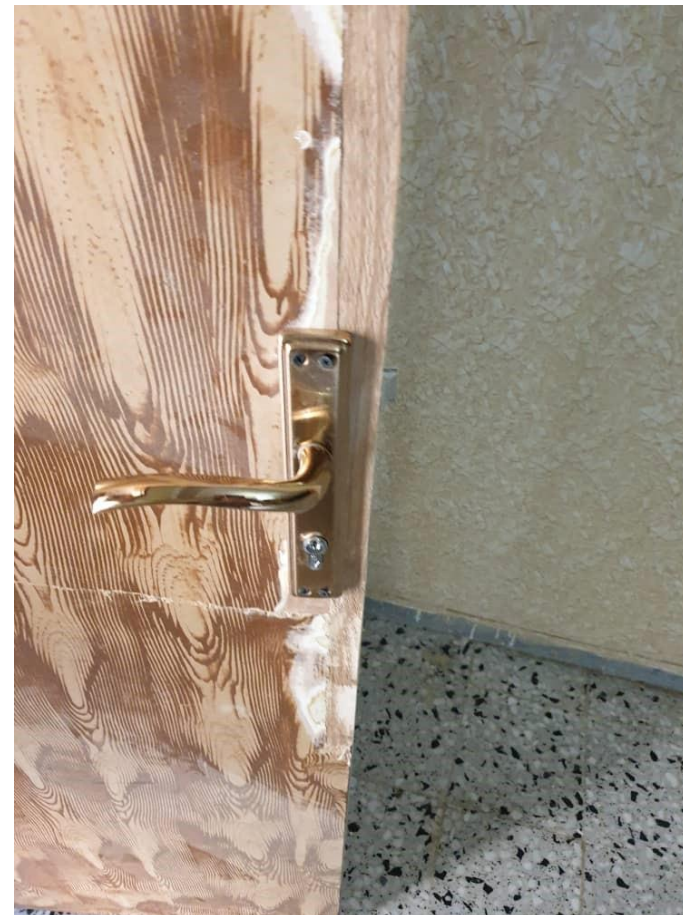
Shelter rehabilitation

Installed provided shelter materials by **beneficiaries** to enhance their shelters condition



Shelter rehabilitation

Installed provided shelter materials by **beneficiaries** to enhance their shelters condition



Shelter rehabilitation

Enhancing shelter walls condition by providing cement bags



Shelter rehabilitation

Provision of **shelter tools** along with materials assistance



Shelter rehabilitation

Signing/securing **shelter rehabilitation agreements** with selected beneficiaries



Shelter rehabilitation

Signing/securing **shelter materials handover** with selected beneficiaries



Thank you for listening !



4. SECTOR UPDATE

Information management



5. AOB

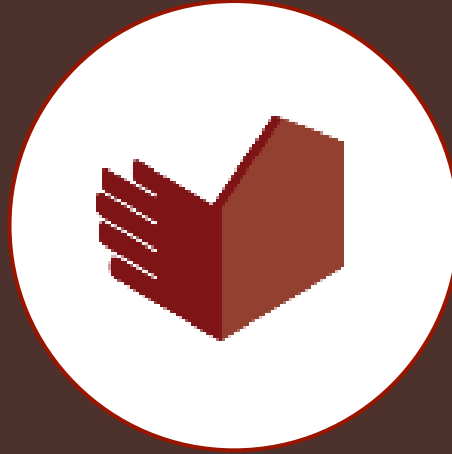
- Next meeting Tuesday 13th July



Shelter NFI Sector Libya

ShelterCluster.org

Coordinating Humanitarian Shelter & NFI



Thank you

SNFI Sector Coordinator
Richard Evans
evans@unhcr.org

SNFI Sector Co-Coordinator
Zaid Al Jabari
zaid.aljabari@nrc.no

SNFI Sector IMO
Awat Salih
salihaw@unhcr.org

SNFI Translator
Ali Abdullatif
abdullat@unhcr.org