

NFI/Shelter/CCCM Cluster General Meeting

Sunday 18th June 2017 11 – 13:15 PM

Agenda

- **Introductions/ Ground Rules – مقدمه ومبادئ - 3 mins**
- **Review action points from previous meeting - مراجعه نقاط المتابعه من الأتماع السابق - 2 mins**
- **Update from SAG/TWIG meeting – HPF, PMR and MYP, EESK, Abs floods, CEI, Cash for Shelter and next steps/ تحديث من المجموعه - 10 mins**
- الفنيه والمجموعه الاستراتيجيه للكتله
- **Presentation from HI on Inclusion - عرض من قبل منظمه هاندي كاب الدوليه - 20 mins**
- **Updates from Partners – issues, updates - تحديث من شركاء الكتله - 30 mins**
- **Update on Survey on prioritization of Technical Support - التحديث عن أستبيان تحديد - 5 mins**
- الاولويات للدعم الفني
- **Update on Access issues registry - تحديث عن اليه التبليغ لمشاكل الوصول - 5 mins**
- **AOB - أي نقاط أخرى - 5 mins**

Introductions/ Ground Rules

Cluster Coordination Team (CCT) Yemen

Charles CAMPBELL - UNHCR

National Senior Cluster Coordinator (Shelter/NFI/CCCM)

Mobile: +967 712 225 117

Email: campbelc@unhcr.org

Hani CHATILA - IOM

National Cluster Co-Chair (Shelter/NFI/CCCM)

Mobile: + 967 738 500 109

Email : hchatila@iom.int

Monir ALSOBARI - UNHCR

National Deputy Cluster Coordinator (Shelter/NFI/CCCM)

Mobile: +967 712 225 045

Email: alsobari@unhcr.org

Esam ALDUAIS - UNHCR

Sub National Cluster Coordinator – Aden Hub

Mobile: +967 711 695 133

Email: Alduais@unhcr.org

Rashed ALDUBAI - UNHCR

Sub National Cluster Coordinator - Al Hudaydah Hub

Mobile: +967 712 225 086

Email: aldubai@unhcr.org

TBC – Agency Name

Sub National Cluster Coordinator – Sa’ada Hub

Mobile: vacant

Email: noname@vacant.org

Adem Shaqiri - UNHCR

Sub National Cluster Coordinator – Sana’a Hub

Mobile: +967 712 225 012

Email: shaqiri@unhcr.org

TBC – Norwegian Refugee Council (NRC)

Sub National Cluster Coordinator – Taiz

Mobile: +967 730 255 594

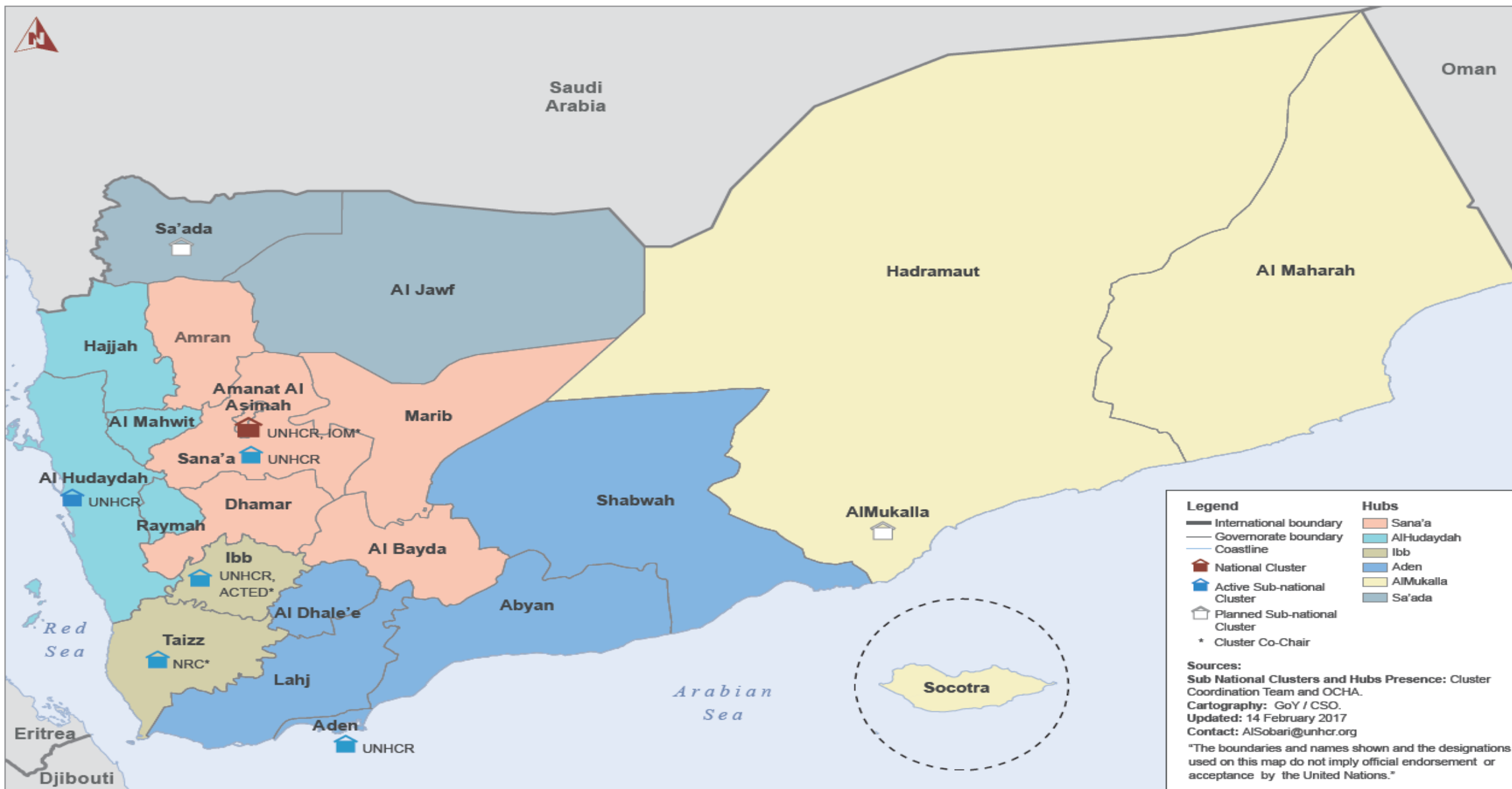
Email: denis.igua@nrc.no

Vacant – Agency Name

Sub National Cluster Coordinator – Ibb

Mobile: vacant

Email: noname@vacant.org



Review of Action points from previous general meeting

No.	Description of Action Point	Status
1	CCT to share translated AAP documents and signed beneficiary information sharing framework. The endorsed MoM is to be published on the web portal	Completed
		Completed
		Completed
2	CCT is to share Hudaydah mission report as well as an updated contingency stock list.	Completed
		Completed
3	CCT to review and provide technical feedback on submitted projects as well as keeping members up to date of status of YHPF allocations.	Completed
		Completed
4	CCT to coordinate with all actors in order to be able to finalize the PMR.	Ongoing

Review of Action points from previous SAG/TWIG meeting

No.	Action Point Description	Status
1	IOM implementing partner (Basma) will share the list of 600 HHs assisted with NFIs in Hajjah.	Completed
2	Cluster Co-Chair to summarize Emergency Response guideline learning from experience of the recent emergency in Hajjah.	Ongoing
3	CCT will share the IST and the finalized cluster simplified needs assessment forms.	Ongoing
4	CCT will communicate with OCHA on the IST Assessment timeframe, agree on response time and clarify when Cluster may decide to go ahead with needs assessment.	Completed
5	CCT to support on the negotiation of easing the process of coordination with the authorities.	Ongoing
6	Suggestion to institute a system of tracking issues encountered by Partners to negotiate with the authorities however should be clarified with OCHA process to not create another layer of coordination/reporting without added value.	Ongoing

Review of Action points from previous SAG/TWIG meeting

No.	Cluster Coordination Team to send the recently finalized Rental Subsidy Guidelines to partners.	Status
1	Cluster Coordination Team to send the recently finalized Rental Subsidy Guidelines to partners.	Completed
2	Cluster coordination team to share Hudaydah mission report as well as an updated contingency stock list.	Ongoing
3	Since the Access Working Group also dealt with difficulties in access to certain locations they should be liaised with before any action is taken	Ongoing
4	Call for Expression of Interest for Ibb Governorate sent out on 14/06/2017	Ongoing

Update on Floods in Hajjah



Update on Floods in Hajjah



<https://www.sheltercluster.org/response/yemen>

Update on Floods in Hajjah



<https://www.sheltercluster.org/response/yemen>

Update on HPF Allocation

SN	Cluster Partner	Partner Budget (\$)	OCHA Allocation (\$)	Intervention	Shelter/NFI/CCCM as % of intervention	Beneficiaries	Duration (months)	Governorate	District
1	AGFD	130,486	95,000	Shelter kits and NFI kits	19%	IDPs, returnees and host community	12	Al Hudaydah	Az Zaydiyah
2	DRC	56,157	50,000	Site management	2%	IDPs	12	Hajjah	Hajjah city
3	NRC	1,004,156	502,500	Shelter rehabilitation, Shelter kits, NFI kits and CASH for rent	67%	IDPs, returnees and host community	12	Al Hudaydah , Al Lahj , Sana'a	Al Qanawis , Al Qabbaytah , Hamdan
4	SAMA Yemen	633,833	600,000	NFI kits and Site management	60%	IDPs, returnees and host community	12	Al Jawf , Marib	Bart Al Anan , Marib city
5	SHS	519,656	250,000	NFI kits and CASH for rent	70%	IDPs, returnees and host community	6	Aden	Dar Sad
Total		2,344,288	1,497,500						

Update on HPF Allocation

- First standard allocation HPF recommended by OCHA
- 36 projects Totaling 47 million approx. for projects
- Signing of grant agreement not yet signed
- 10 projects cleared by NY
- Went a bit slower OCHA sent NY on 26th May due to Cholera response
- Plan to sign first 10 set of projects this week to start 1st July 2017
- Shelter projects 5/7 under envelop recommended
- For those not selected workshop will be organized

Update on PMR

Description of Indicator	Planned	Achieved Jan --April	% Achieved Jan --April
Time line	12 months	5 months	40%
Budget	\$106 mil	\$ 5.4 mil	5.7%
Population Assisted	2,234,793	387,000	17.6%
Households Assisted with NFI	151,973	63,740	26%
Households assisted with Emergency Shelter	123,299	10,494	9%
Households assisted with winter NFI kits	89,366	25,810	29%
Household assisted with return kits	25,846	997	4%
Households assisted with cash for rental subsidy	12,335	137	1%
Collective center rehab	101	3	3%

YHRP Indicator	January	February	March	April	Total	Targeted	% achieved
Filtered figure of people assisted across the different cluster activities (without double-counting)	178,800	80,897	80,101	47,954	387,752	2,234,793	17%
# of households assisted with Non-Food Items	16,616	6,171	10,442	5,710	38,939	151,973	26%
# of households assisted with Emergency Shelter	5,283	3,446	1,324	441	10,494	123,299	9%
# of households assisted with cash assistance for rental subsidies	137	0	0	0	137	12,335	1%
# of households assisted with winter NFIs kits	14,305	6,209	4,096	1,200	25,810	89,366	29%
# of sites covered with Baseline assessment	0	0	0	0	0	884	0%
# of PDM conducted	0	0	0	0	0	22	0%
# of collective centers rehabilitated / extended	2	0	0	1	3	101	3%
# of houses rehabilitated / reconstructed	0	0	0	0	0	9,040	0%
# of sites supported with basic maintenance / upgrade of shelters	0	0	0	0	0	709	0%
# of service mapping conducted	0	0	0	0	0	23	0%
# of households assisted with return kits	0	0	969	28	997	25,846	4%
# of capacity building programs conducted	0	0	1	2	3	32	9%

Update on PMR

- **Challenges**

- Lack of adequate financial and operational Resources
- Lack of access due to security and admin bureaucracy
- Limited and constrained access to supplies – economic blockade

- **Recommendations**

- More systematic engagement with Donors – pledging conf and after
- Negotiate easing of bureaucratic restrictions
- Advocacy for Hudayah port and pipeline access – no bombing!

Update on Enhanced Emergency Shelter Kit (EESK)



New shelter during installation



Update on Enhanced Emergency Shelter Kit (EESK)

Old design

Cost:123 USD

size:2.65 width, 6 m length and 2.5m of height

surface area:15.9 square meter

volume: 19.88 m³

Remarks: most IDPs did not like it because the shelter take triangle shape and most shelter edges can not use it, so we changed the shape of shelter to rectangle shape which is acceptable for IDPs

New Design:

Cost:173 USD

size:3 width, 5 m length and 2.7m of height

surface area:15 square meter

volume: 40.5 m³

Sub National Partner Identification process

- Process needs to be more transparent
- Process of Call for Expression of Interest (CEI) – Launched 14/06 – 04/07
- **Criteria retained**
 - Organizations technical expertise (Years, Area of expertise – Specifically in Yemen).
 - Scale and capacity of Programs (Shelter/NFI/CCCM) (Geographical coverage, size of operation, capacity, access).
 - Commitment to the Shelter/NFI/CCCM Cluster (Demonstrated commitment (time / HR) to Cluster coordination – participation at Regional, Country? Global level?)
 - Resources: What resources could your organization bring to this position (Staffing, in kind?)
 - Timeframe: Depending on resources, when could you fill the post and for how long?
 - Why your organization should be selected for the Sub National Cluster Coordinator role?

Update on Cash for Shelter

- Few partners provided feedback
- Guidance is not yet fully implemented
- Cash for shelter includes rent subsidy and cash for rehabilitation
- Is there need for developing operational tools for cash for shelter?
- Is there need to update assessment form to capture vulnerability and technical need?

**Inclusion in
Humanitarian Action -
Handicap International**

Inclusion Technical Unit (ITU) Yemen

Sunday 18th June 2017

HI's Goal

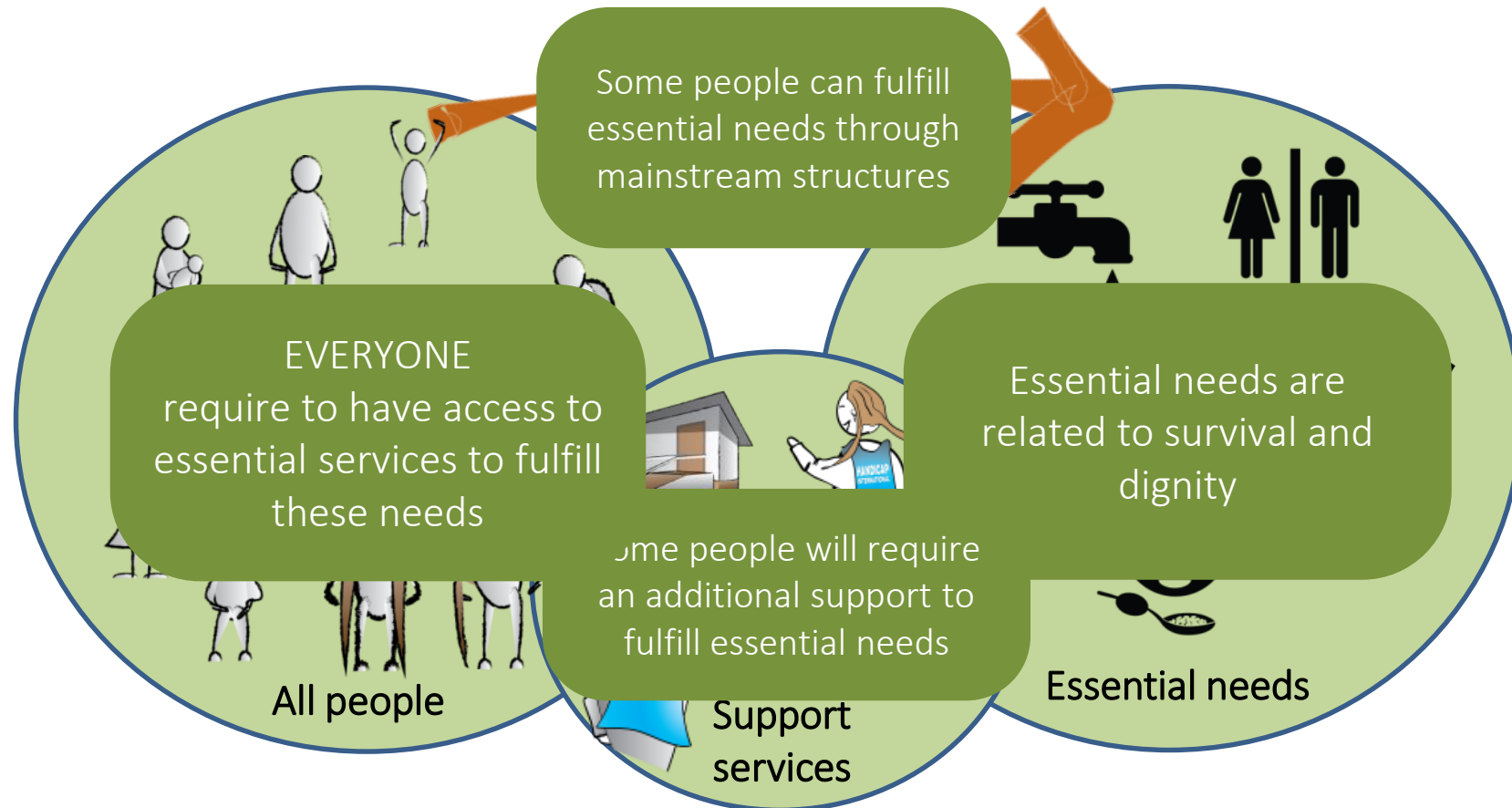
- ▶ HI's goal in emergencies: **ensure the participation and access to essential services** for the most vulnerable persons at risk of being excluded from humanitarian responses
- ▶ Aiming to reach all persons excluded from humanitarian assistance **whatever the factors of exclusion may be**: including structural and environmental factors in addition to personal factors

Inclusion in Humanitarian Action

- All **deliberate** actions and efforts from the humanitarian community to **reduce barriers** and **promote safety, dignity, accountability** and **participation** of a community affected by a conflict or disaster, so that **vulnerable people in need and at risk of not accessing humanitarian aid** are **purposefully** and overtly **included** in the response.

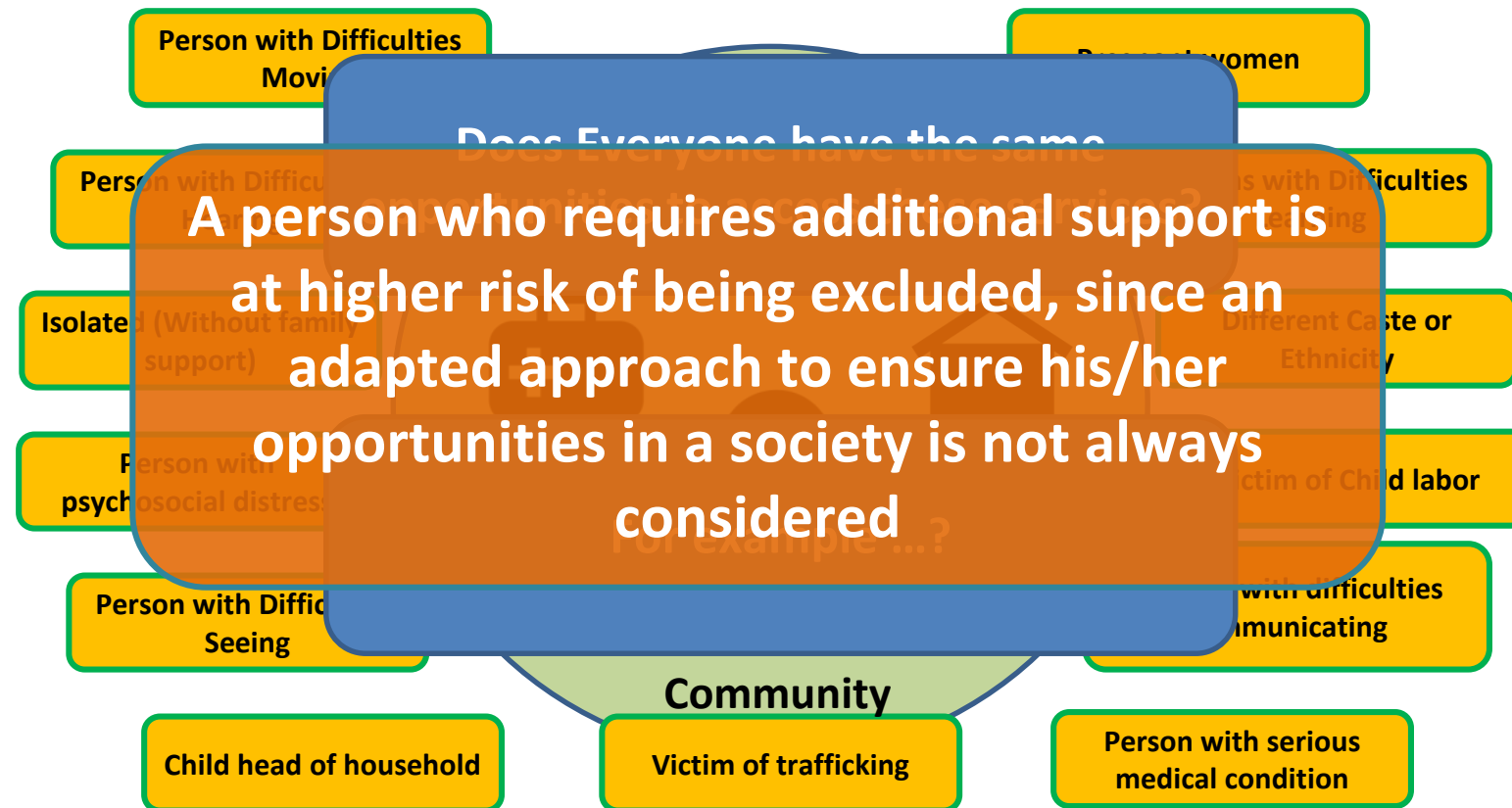
Why Inclusion in Humanitarian Action?

Because Some people at higher risk of exclusion



Why Inclusion in Humanitarian Action?

Because Some people at higher risk of exclusion



Who need additional Support?

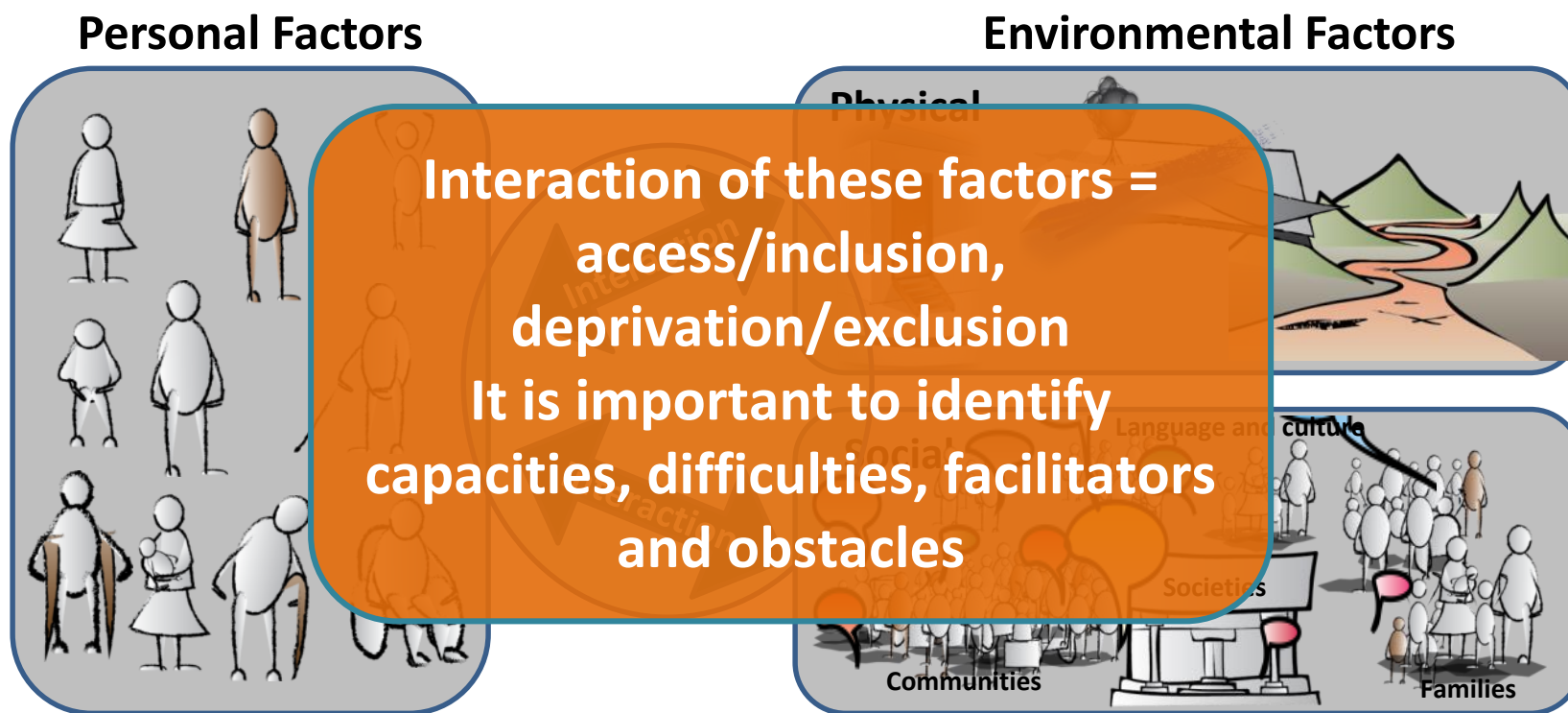
Most of the time.....

- Persons with injuries
- Persons with disabilities
- Persons with chronic diseases
- Older People

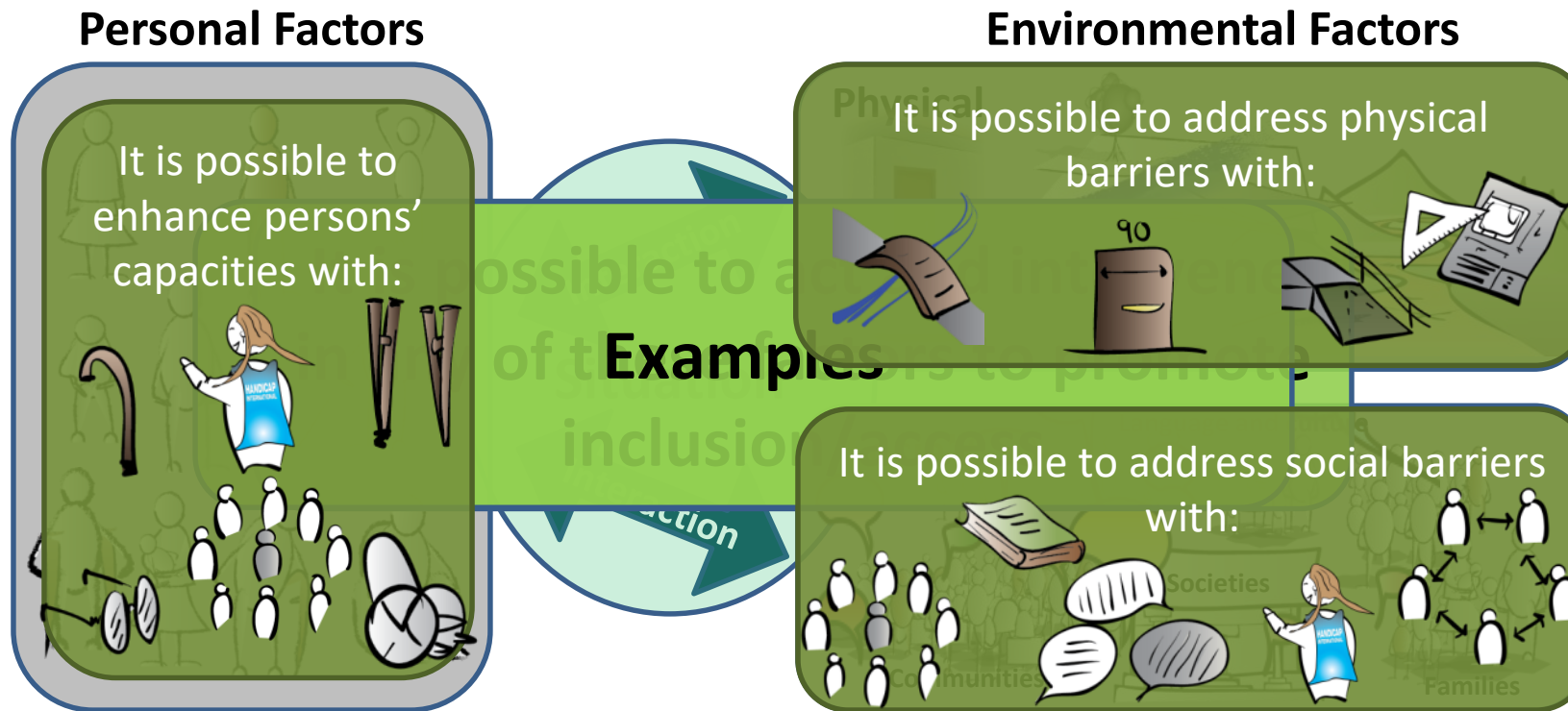
Why they Need additional Support?

- Invisible** will not be included automatically
- More at risk to be **physically** / **emotionally** wounded
- Less protected** from attack or damage
- Less able** to access resources
- Rarely consulted** and included in decision making
- Less able **to cope** with emergency conditions
(eg. An older person might find living in a tent difficult)
- Less considered** in the mainstream emergency response
(eg food distributions, health services, accommodation....)

Inclusion or Exclusion depends on the Interaction



Twin Track Approach Towards an inclusive interaction



Inclusion in Emergency Responses

**Inclusion can be strengthened
also when designing
humanitarian projects: through
the
4 Dimensions of Inclusion!**

4 Dimensions of Inclusion



Vulnerable persons and their families are actively **involved** in humanitarian action, having a **voice** and being **empowered** to hold humanitarian actors **accountable**.



Humanitarian practices and strategies are tailored to, suitable, relevant and appropriate for vulnerable persons and their families. Also are committed to the 'do no harm' principle.

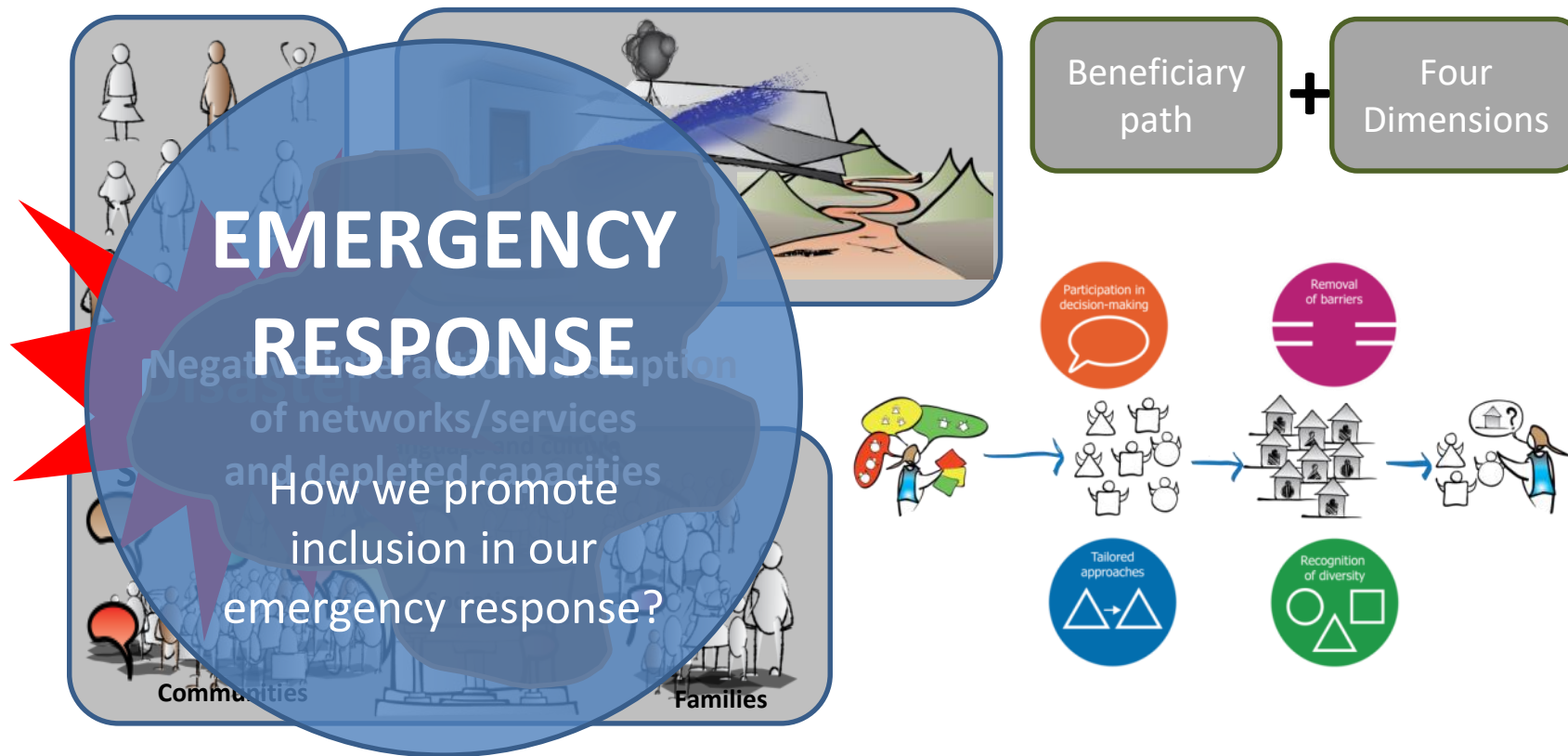


Humanitarian practices recognize the diversity of people, households and communities and the barriers they face to access humanitarian aid.

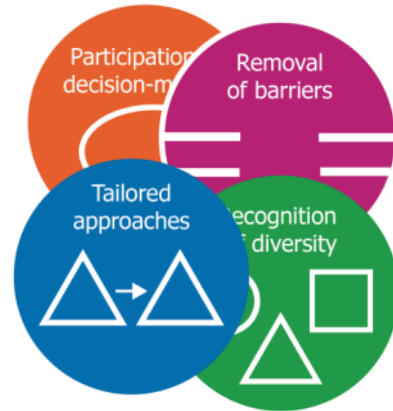


Humanitarian practices address causes of exclusion of vulnerable persons from humanitarian aid, leading to an increased access and participation, and looking forwards sustained gains.





Inclusion in Emergency Responses



Inclusion in Emergency Responses



Four Dimensions
When combined,
strengthen inclusive
programming at all stages

- Use 
- Circulate 
- Enter 
- Reach 

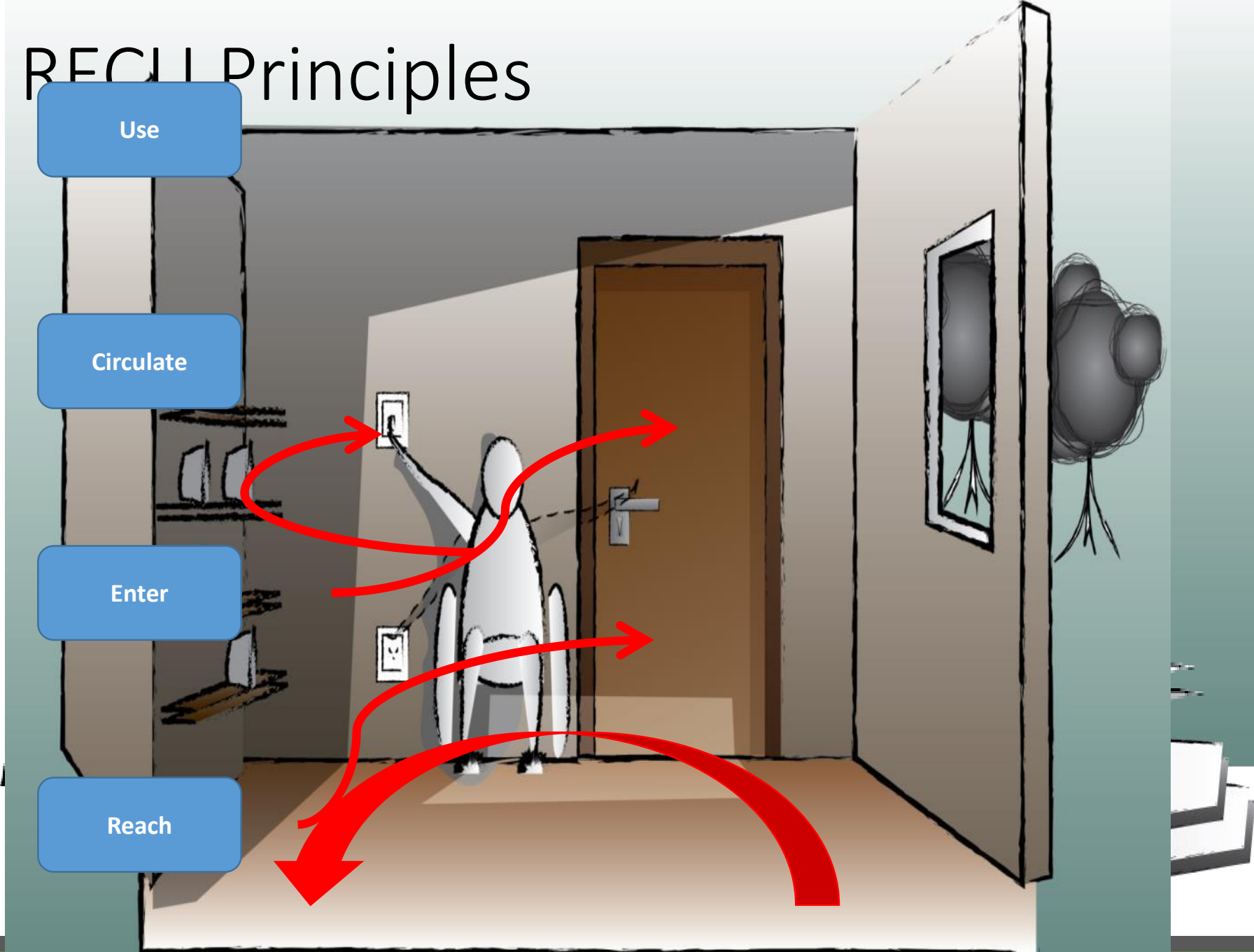
RECU Principles

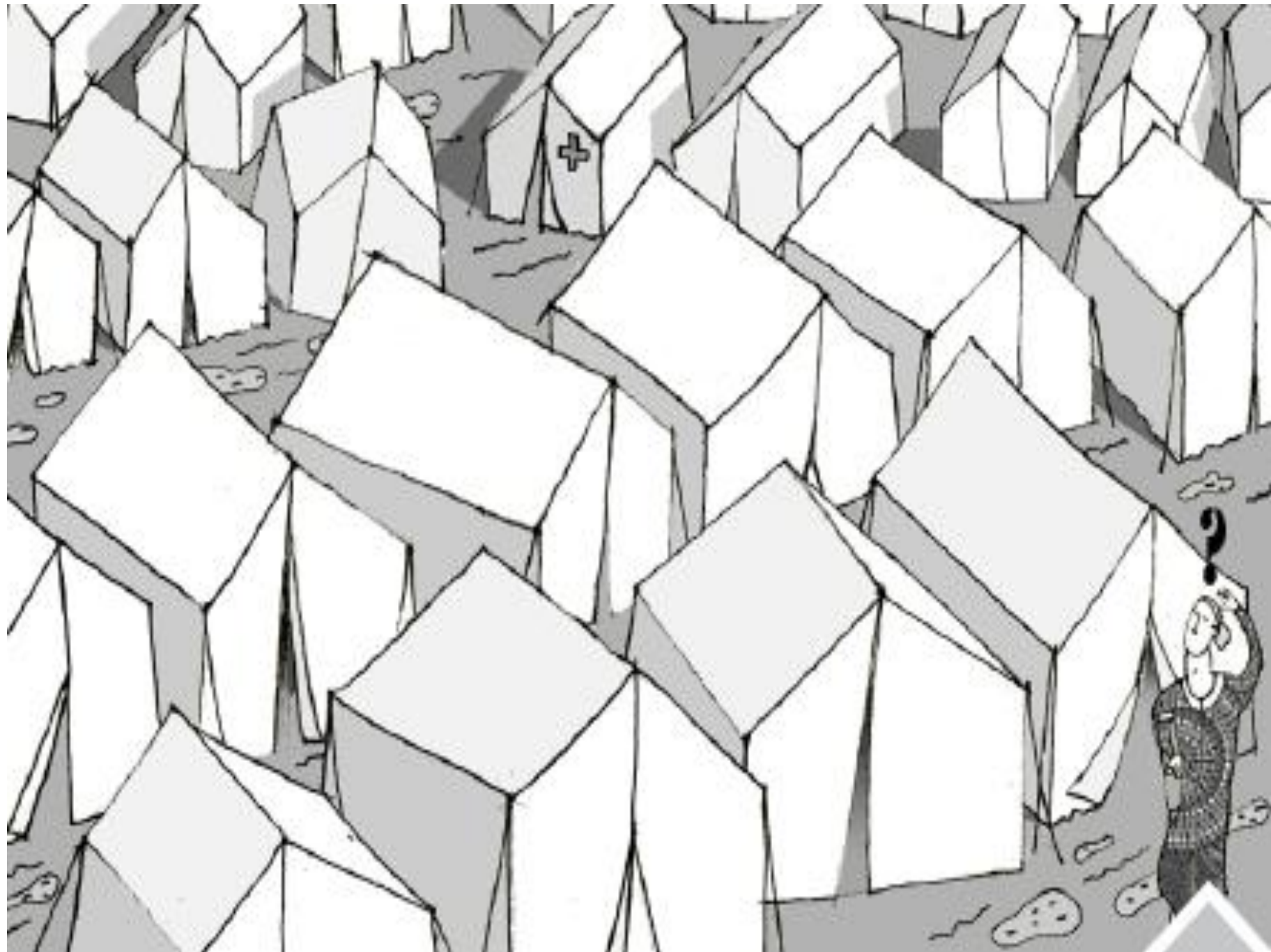
Use

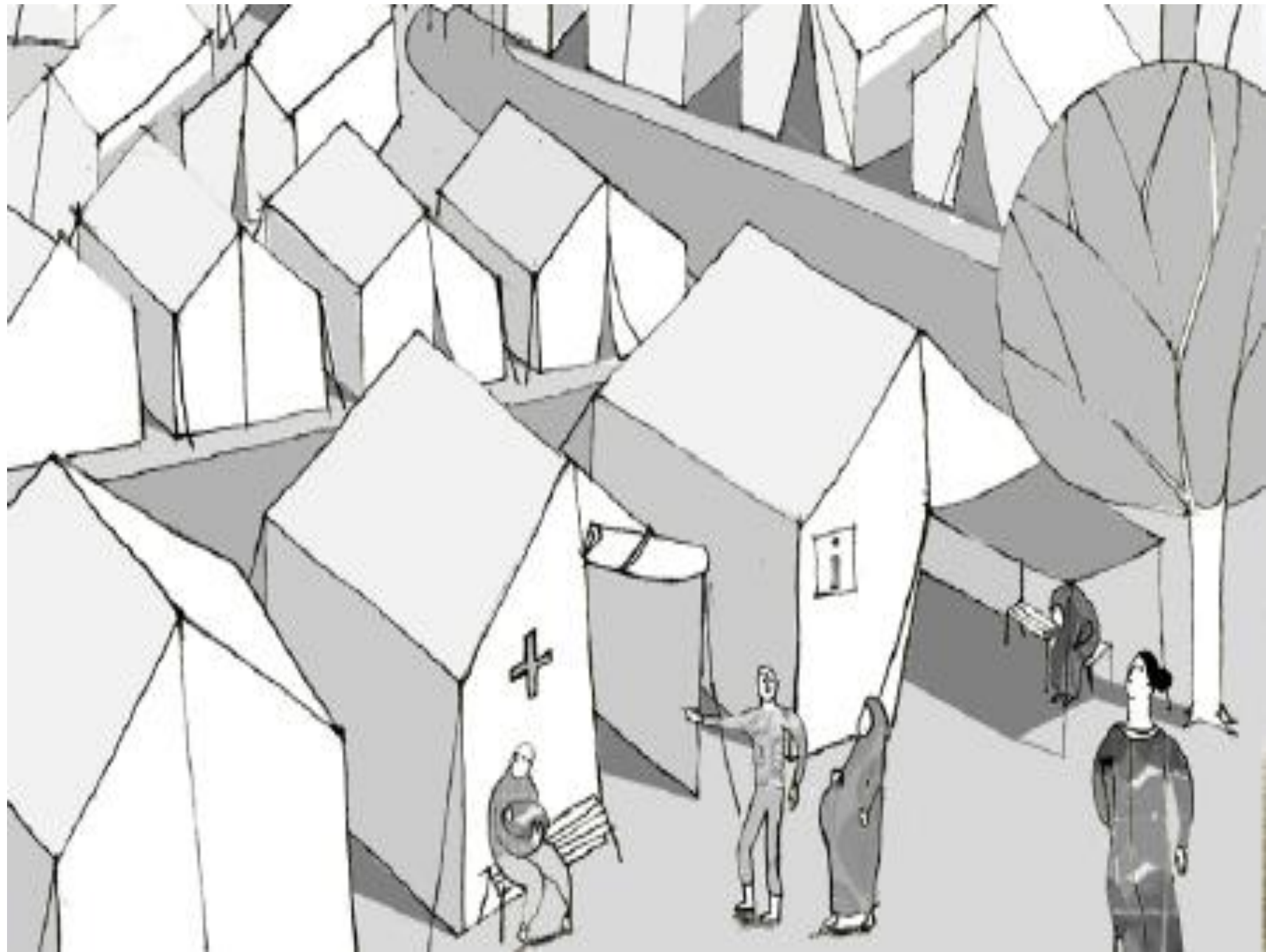
Circulate

Enter

Reach







How Handicap International Yemen Can support You?

Protection: Inclusion mainstreaming in humanitarian action

Established Inclusion Technical Unit

1 Technical Advisor Inclusion
1 Technical Program Manager
4 Technical Officer Inclusion

Inclusion Mainstreaming Strategy

- Vulnerability, Capacity and Barriers assessment
- Bilateral Support for inclusion (For Humanitarian Actors)
- Community Training awareness sessions
- Advocacy and support coordination

Activities

- Vulnerability analysis and developing factsheets
- Sensitization sessions for cluster members
- Community awareness sessions on Inclusion
- Project documents review to make inclusive
- Organizational bilateral support for inclusion to better tailored humanitarian programs to include everyone
- Tailored made training on inclusion technical guidelines sector specific
- On job coaching and inclusion monitoring

Expression of Interest (EOI)

For Bilateral technical support on inclusion mainstreaming from Handicap International Yemen

Key messages ;

- ▶ Strengthen their operational capacity to deliver an inclusive emergency response.
- ▶ This support is only technical support (Training, on the job coaching and document revision) and this support will not guarantee any in kind of cash assistance from Handicap International.
- ▶ Organizations who are seeking only technical support in inclusion mainstreaming from Handicap International should apply .

Contact us

Health:
Psychosocial support and
rehabilitation

Dammag Jamil

Health Project Manager

Yemen Mission – Sana'a, Yemen

pmhealth@handicap-international-ye.org

Mob: +967 739706665/+967 774392943

Protection:
Inclusion main streaming in
humanitarian action

Muhammad Jahangir

Technical Advisor Inclusion

tainclusion@handicap-international-ye.org

Amman Cell: +962 790520218

Weaam Yahya

Technical Officer Inclusion Sanaa

Toinclusion.san@handicap-international-ye.org

Sanaa Cell: +967 738 394 854

Q & A

Thank you!

For More detail and Questions

Muhammad Jahangir

Inclusion in Humanitarian Action

Technical Advisor Inclusion Yemen

tainclusion@handicap-international-ye.org

Update on Survey on prioritization of Technical Support

A survey will be circulated this week in order to prioritize the cluster technical support. Example of the technical points:

- CCCM Technical guidelines – package of assessments, recommended upgrades, protection considerations, gender considerations
- CCCM Monitoring tool - for CC monitoring
- NFI Diversification package
- Grants for Rehab (Guidelines)
- Cash/Voucher guidelines
- Shelter Assessment Guidelines
- Transitional Shelter Guidelines
- Return Assistance guidelines

Update on Access issues registry

- Follow up takes place on a rolling basis
- WG follows up with any of the local authorities
- Success duration varies from 2 days to few weeks
- OCHA coordinates with the NGOs throughout process
- Should Cluster partner update Access WG and Cluster ? Added value?

Any Other Business?

- Mapping of Cholera priority districts
- Remote sensing damage analysis – Aden – Taiz
- Database of NGOs, CBOs in each Hub
- Update from Abs Foundation