

HIGHLIGHTS

The latest assessments show over 31,200 houses damaged or destroyed by Tropical Cyclone Winston. 22,900 households have received tents, tarpaulins, shelter kits or shelter tool kits, with about 8,300 households yet to receive emergency shelter assistance from ongoing or planned distributions. Early recovery activities are being planned and the Shelter Cluster is advocating for support to the most vulnerable affected Fijians, with 3,400 core shelters and 5,600 repairs. To complement to Government's announced Help for Homes voucher initiative and support owner-driven recovery, the Shelter Cluster aims to train 780 carpenters and semi-skilled builders with a build back safer training. Currently the Shelter Cluster is the least funded cluster despite being one of the highest priority sectors.

CLUSTER STRATEGY AND OBJECTIVES

To support owner-driven recovery by investing in disaster preparedness and risk reduction while prioritizing the most vulnerable households and communities.

Objective 1: Provision of emergency shelter and NFI, with supporting IEC.

Objective 2: Support to self-recovery to repair and rebuild damaged house with hardware or cash/voucher equivalent and appropriate training and IEC material.

Objective 3: Along with IEC, provide technical training on building back safer for skilled/semi-skilled carpenters.

CONTEXT AND RESPONSE

Category 5 Tropical Cyclone Winston was the most severe ever recorded in the South Pacific, affecting Fiji 20th February 2016, and the government declared a State of Natural Disaster for 60 days and officially requested international assistance. The Ministry of Local Government, Housing & Environment leads the Shelter Cluster. The response to date has focused on emergency shelter assistance, and the Shelter Cluster is working closely with government to address identified gaps and duplication as well as advocating for further funding and support to owner-driven recovery and build back safer awareness and technical training.

CHALLENGES

- Lack of funding dedicated for emergency and recovery shelter activities. Gaps in available information, information sharing and accurate projections.
- Duplication and gaps in emergency shelter assistance.
- Weak decentralized coordination and communication.
- Adverse weather impacting affected families and slowing the response.

Contact Details:

Cluster coordinator: Caroline Dewast
Email: coord1.fiji@sheltercluster.org
Phone: +679 929 1920
[Shelter Cluster Fiji Website](#)

Key Figures

Total affected population:	350'000 people
Cluster target population:	31'200 HH
Total houses destroyed:	11'500 units
Total houses damaged:	19'700 units

FLASH Appeal

Funding Needs (USD):	5.26m
Funding Available (USD):	1.1m (21%)

Response:	Target	Reached
Emergency shelter (HH)	31'200	73%
Support Self-Recovery (HH)	9'000	11%
Technical Training (People)	780	0%

Settlement type:	HH	%
Urban households	10'186	33 %
Rural households	21'025	67 %

Cluster:

Cluster Lead	Ministry of Local Government, Housing & Environment
Co-lead Agency	IFRC
No. of cluster partners	15
No. of staff dedicated to the cluster	3

Key Dates

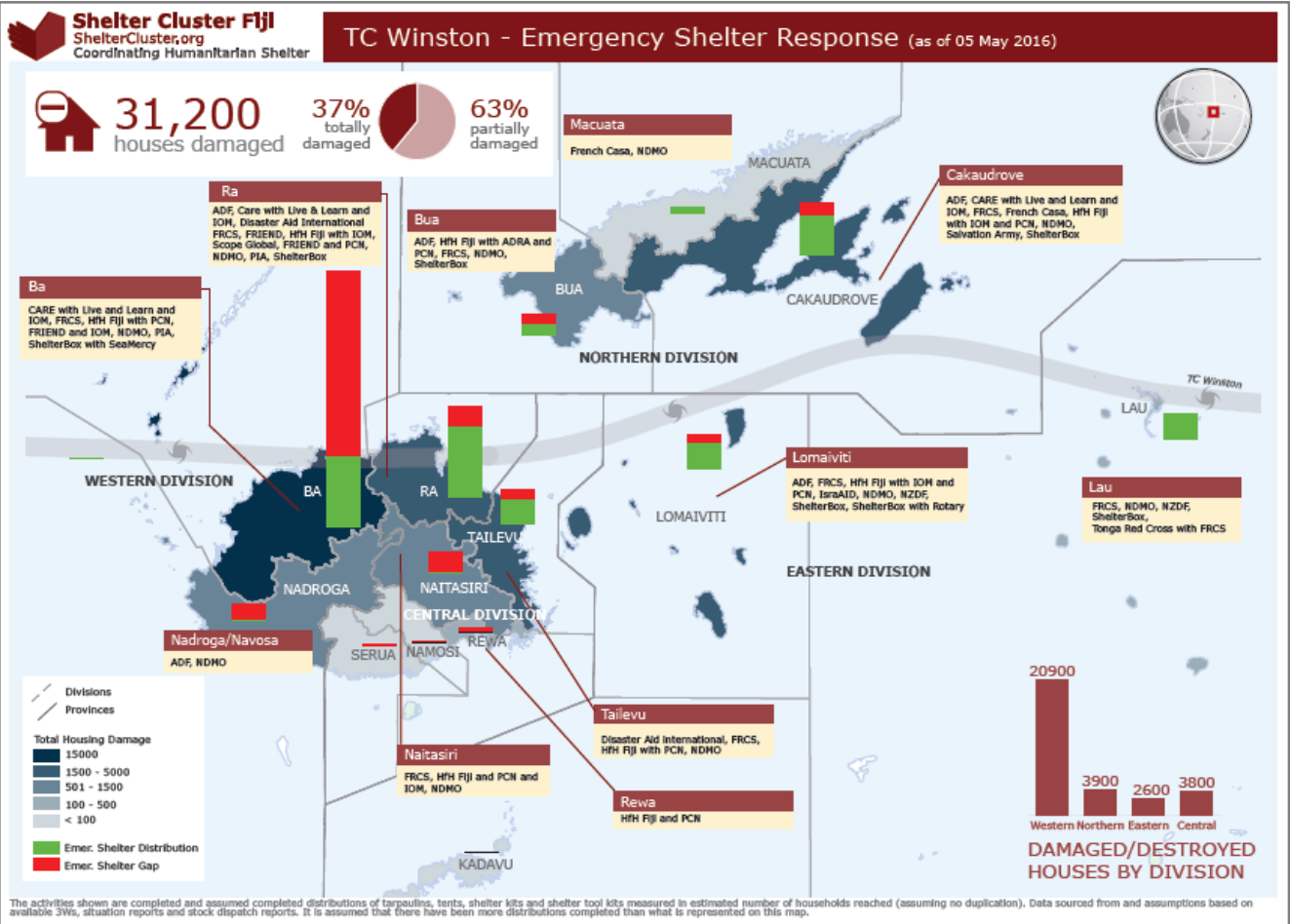
Crisis: 20 February 2016
Activation of Cluster: 27 February 2016
Deployment: 28 February 2016
End of State of Natural Disaster: 19 April 2016
GLIDE: 2016-000014

Global Shelter Cluster Focal Point: Pablo Medina
Email: pablo.medina@ifrc.org
www.sheltercluster.org

Situation Analysis

3W Reported Activities (5th May 2016)

Indicators	Need	Target*	Result**	Current Gap	Projection**	
					Ongoing, Planned, Pipeline	Remaining Projected Gap
Objective 1 - Emergency shelter						
1.1 No. of households (sex/age/vulnerable group) received some form of emergency shelter, including tarpaulins, tents, shelter kits, tool kits.	31,200 HH	31,200 HH	22,929 HH	8,272 HH	8,613 HH	(342) HH
1.2 No. of total emergency shelter items & NFI distributed	50,000 items	50,000 items	42,324 items	7,676 items	12,358 items	(4,682) items
Objective 2 - Support to Self Recovery						
2.1 No. of households (sex/age/vulnerable group) receive a core shelter, including vulnerable groups.	11,500 HH	3,400 HH	- HH	3,400 HH	- HH	3,400 HH
2.2 No. of vulnerable households who receive shelter fixing kits, materials or a cash/voucher equivalent, including vulnerable groups.	19,700 HH	5,600 HH	996 HH	4,604 HH	18 HH	4,586 HH
Objective 3 - Technical Support						
3.1 No. of vulnerable households reached through public awareness, through mass IEC dissemination (excluding training)	31,200 HH	31,200 HH	- HH	31,200 HH	- HH	31,200 HH
3.2 No. of household have received emergency shelter awareness (for shelter kit, tents, tarps, tool kits)	31,200 HH	31,200 HH	9,873 HH	21,328 HH	4,563 HH	16,765 HH
3.3 No. of households have received BBS awareness (to repairs, retrofit, building core shelter)	31,200 HH	9,000 HH	887 HH	8,113 HH	206 HH	7,907 HH
3.4 No. of semi-skilled/skilled carpenters receive BBS technical training	1 carpenter per 40 HH	780 carpenters	- HH	780 carpenters	- HH	780 carpenters
*Targeting based on either full caseload or estimations of number of HH living under the poverty line with completely/partially destroyed houses						
**Where HH data is missing, assumptions were made on the number of HH reached with emergency shelter interventions. The assumption is HH received either an average of 2 tarps, or 1 tent, or 1 shelter box, or 1 shelter kit, or 1 tool kit, and that there weren't multiple items distributed to the same one HH.					Situational Analysis data is sourced from agency reported 3Ws, and is accurate up to the last previous inter-sectoral 3W update.	



Ministry of Local Government,
Housing & Environment



Shelter Cluster Fiji
ShelterCluster.org
Coordinating Humanitarian Shelter



International Federation
of Red Cross and Red Crescent Societies
www.ifrc.org Saving lives, changing minds.