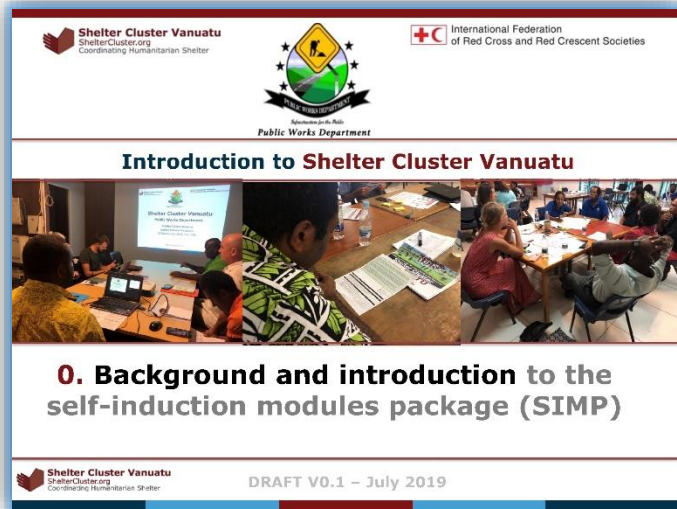


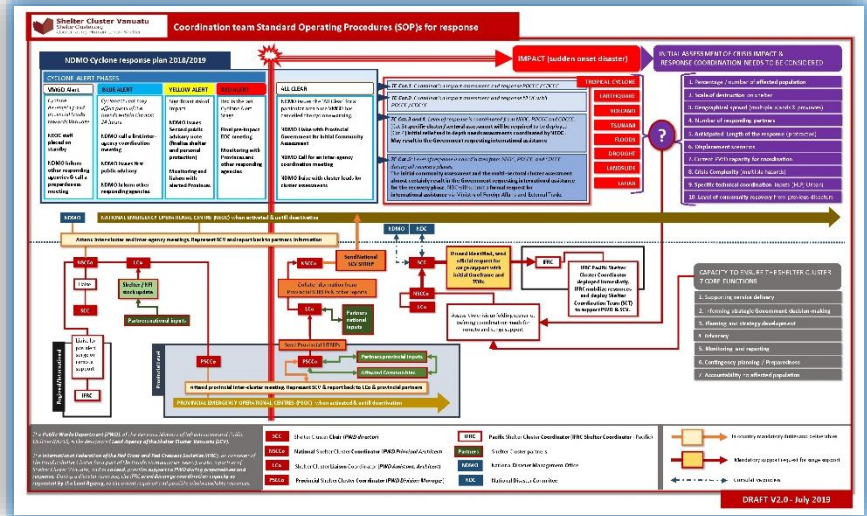
Introduction to Shelter Cluster Vanuatu. Development of field-based coordination training package / self-induction modules for coordination team members and partners. This aims to increase understanding on in-country coordination mechanisms, the scope of humanitarian shelter in Vanuatu, and key services and resources that Shelter Cluster coordination provides to various shelter stakeholders.



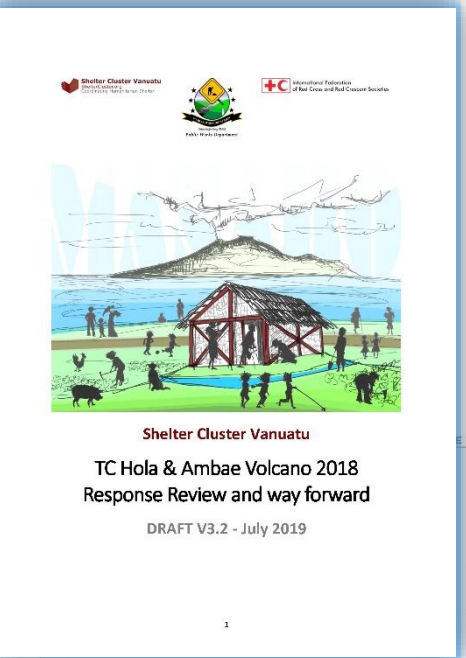
Technical guidelines for shelter preparedness and response to natural hazards in Vanuatu



Technical Guidelines for Shelter Preparedness and Response to Natural Hazards in Vanuatu. The last revision includes guidance on response options and packages from the Ambae Volcano response, cash-based interventions, awareness, and training modules (emergency shelter, shelter focal point, women in shelter, online trainings)



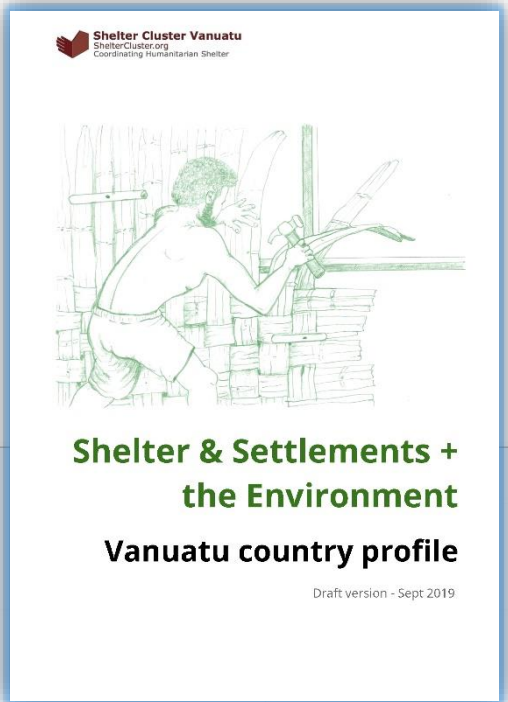
Making cluster responsibilities part of everyday business in Vanuatu through revision of Shelter Cluster Vanuatu lead, Public Works Department job descriptions, organisational chart and Shelter Cluster Standard Operating Procedures.



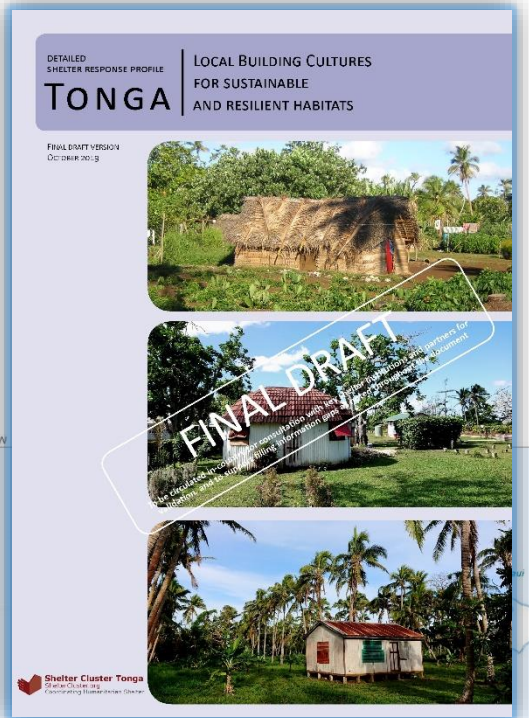
TC Hula and Ambae Volcano Response Review and Way Forward. Identification of key recommendations and updating of cluster workplan for preparedness and capacity building.



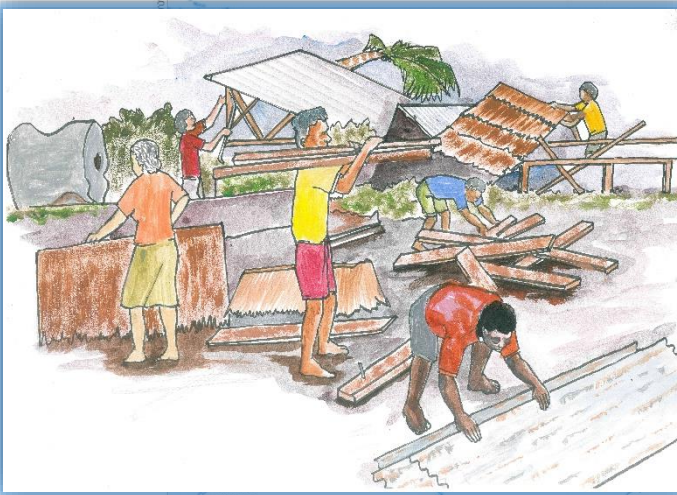
Selta Hanbuk. Designed as a ready reference for the shelter coordination team and partners, the Selta Hanbuk is a compilation of all key documents of the Shelter Cluster Vanuatu since 2015, comprising 2 volumes.



Shelter & Settlements + the Environment: Vanuatu country profile. This has been developed by the Shelter Cluster Vanuatu to fill a knowledge gap highlighted during past responses. The profile informs environmentally sustainable shelter programming by making key information about environmental considerations, impacts, concerns and opportunities relevant to shelter and settlements programming available and accessible to Shelter Cluster partners.



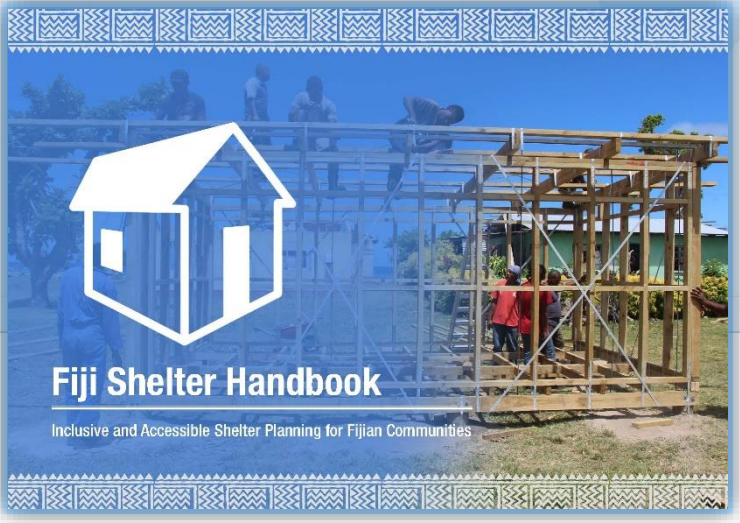
Detailed Shelter Response Profile: Local Building Cultures for Sustainable and Resilient Habitats. This profile aims to provide a basic understanding of the context and key issues, to inform strategic planning of humanitarian shelter responses, and the design of individual shelter projects which take in to account and promote existing good practices offered by Local Building Cultures (LBC) and Building Back Better/Safer activities.



Provincial level emergency shelter training package. This has been developed by Solomon Islands Shelter Sub-Committee co-lead Solomon Islands Red Cross and is being field tested with NDMO. These trainings aim to strengthen preparedness and response capacity of the shelter sector at local level in the Solomon Islands.



Shelter Cluster Vanuatu shirts for the coordination team and partners, to help further disseminate key shelter safety messages, and to increase visibility of the cluster in communities and within the Public Works Department.



The Fiji Shelter Handbook: Inclusive and Accessible Shelter Planning for Fijian Communities. This was launched at the Pacific Resilience Partnership meeting in Suva this year. Its development was led by Shelter Cluster Fiji co-lead Habitat for Humanity Fiji. The handbook provides partners with guidance on local coordination structures and best practice shelter programming in the Fijian context, supporting effective and appropriate response and preparedness activities.

KEY ACTIONS IN 2019