

Yemen Shelter / NFI / CCCM Cluster Winterization Strategy

October 2017 – February 2018

i. Background

The climate in Yemen varies greatly depending on the geographical region. During the winter season, the country experiences coolness, with frequent frost. The range of temperature can go from 22°C (72°F) during the highest temperature in winter, into below 0°C (32.0 °F) at its coldest. Rain is brought in by the southwest winds. Rainfall, which comes in irregular heavy torrents, averages 130 millimetres (5.12 in) annually.

This document represents the Winterization Strategy for IDPs and affected populations. It is part of the Shelter/NFI/CCCM Cluster efforts to put in place measures to support people of concern in order to avert the risk of humanitarian tragedy and loss of life during the winter months, particularly between October and February. The Shelter/NFI/CCCM Cluster's response requires coordinated efforts by partners and timely implementation to address this situation by distributing Winter NFIs kit and Shelter assistance.

Given the current numbers of displaced persons concerned and the growing humanitarian needs, more effort will be required to bolster the response in the affected areas during the winter months. The cluster will seek to provide people most at risk, particularly women and children, with a "winter package" composed of different items, or the cash equivalent as outlined in this document. *Special attention are envisaged for individuals with specific needs.*

ii. Priority Locations

The priority locations will be determined based on the criteria indicated below the first level of prioritisation will be in locations that have very low temperatures during the winter months

First level prioritisation

- Temperature of the location during the winter months with the following categories:
 - Critical: Districts where minimal noted temperature for period December-February are between 1.5 and 5 degrees Celsius and mean lowest noted temperature in districts is below 15 degrees.
 - High: Districts where minimal noted temperature for period December-February are between 5.1 and 10 degrees Celsius and mean lowest noted temperature in districts is below 19 degrees.
 - Medium: Districts where minimal noted temperature for period December-February are between 10.1 and 17 degrees Celsius and mean lowest noted temperature in districts is below 21 degrees.
 - Low or none: Districts where minimal noted temperature for period December-February are above 17 degrees Celsius and mean lowest noted temperature in districts are above 15 degrees.

Second level prioritisation

- Locations with high number of IDPs and Returnees compared to the number of Host Community
- Locations with high numbers of IDP Hosting Sites
- Locations with high incidence of Cholera
- Locations with high numbers of people with special needs (PWSN)
- Locations with High numbers of PIN (People in Need)
- Locations with high number of gaps in PIN

The Cluster has prepared a heat map (Annex I) indicating the priority locations taking the above criteria into consideration.

iii. Target Beneficiaries

The primary objective of the winterisation strategy is to target IDPs and returnees living in IDP hosting Sites and host communities and are living in sub-standard shelter conditions that put them at grave risk of further deterioration in their shelter vulnerability due to the extreme temperatures.

The aim would be to achieve the following

- Reduction of the shelter vulnerability to winter conditions
- Provide vulnerable families without shelter with a basic emergency shelter and winterisation support to protect and preserve life
- Reduce health and safety risks for already vulnerable families that become elevated during this period
- Through cash assistance give families the choice to prioritise their winter needs

The following beneficiary selection criteria in addition to the Shelter/NFI/CCCM vulnerability criteria should be considered

- IDPs living in IDPs Hosting Sites that will not withstand the winter without some weatherproofing support
- IDPs living in IDP Hosting Sites or host communities that are living in sub-standard shelters that need weatherproofing
- IDPs that are economically poor without the means to provide for their winterisation needs and without assistance their health and wellbeing would deteriorate significantly

iv. Planning assumptions

Between October 2017 and February 2018, the Shelter/NFI/CCCM cluster anticipates 537,430 households in need for winter assistance and estimated 161,239 most vulnerable households in need of urgent assistance.

The priority governorates and districts are listed in Annex II below and these were developed based on a combination of the criteria provided in Section ii above. The harsh weather condition (extremely cold) during the winter season and areas with the high number of displaced households residing in IDPs Hosting Sites. The below table I summarized the governorates households in need (in one or more districts) in critical priority locations and 30% of most vulnerable households in need that are planned to be assisted.

Governorate Name	Households In Need	Households Targeted for Assistance
<i>Abyan</i>	2,265	680
<i>Al Bayda</i>	1,100	330
<i>Al Dhale'e</i>	8,670	2,601
<i>Al Jawf</i>	7,446	2,235
<i>Al Maharah</i>	947	285
<i>Al Mahwit</i>	3,437	1,031
<i>Amanat Al Asimah</i>	35,534	10,660
<i>Amran</i>	32,037	9,611
<i>Dhamar</i>	24,254	7,277
<i>Hadramaut</i>	2,443	733
<i>Hajjah</i>	60,924	18,277
<i>Ibb</i>	12,057	3,617
<i>Lahj</i>	14,368	4,311
<i>Marib</i>	12,903	3,870
<i>Sa'ada</i>	33,206	9,962
<i>Sana'a</i>	14,903	4,473
<i>Shabwah</i>	13,401	4,021
<i>Taizz</i>	39,926	11,978
Grand Total	319,821	95,952

Table I : The figures of the Governorates represent one or more districts that are affected with cold during the winter season, require assistance and considered as a critical priority location. The Governorates/Districts that are not affected by the winter and have persisting needs will be assisted through the regular Cluster Humanitarian programs that were planned under 2017 Humanitarian Response Plan (HRP).

v. Winterization Support

The cluster winterization strategy focuses on the following areas of intervention in order to avert the risk of humanitarian catastrophe and loss of life:

Type of assistance	Description of the assistance	Unit Cost (USD) per family	Targeted group
Winter In-kind Support	<u>Blankets (per person):</u> one high thermal single blanket or two medium thermal single blankets or one double blanket.	50	Vulnerable IDPs and affected population
	<u>Clothes (per person):</u> Male: Fleece pyjama, jacket, socks and shawl. Female: Fleece pyjama, socks, sweater and scarf. Children: Fleece pyjama, hat, sweater, gloves and socks. Infant (under 2 years): Fleece infant blanket, hat, pyjama and socks Infant (over 2 years): Fleece infant blanket, hat, pyjama and socks	80	Vulnerable IDPs and affected population
	Heating Grant	60	IDPs in Hosting Sites
	Provision of two plastic sheeting per household (It shall be used to reinforce the existing makeshift shelter if needed) or provide partitions	30	IDPs in Hosting Sites
Winter Cash Grant	Winter NFIs Grant equivalent kit support of the above assistance	230	Vulnerable IDPs and affected population
	Shelter Grant for basic minor rehabilitation of damaged or sub-standard houses to ensure that at least one room is sealed and can accommodate families during winter season	230	IDPs and Returnees

* The beneficiaries are to be provided with one type of assistance.

vi. Financial requirements

A total of USD \$25,427,280 is requested for activities planned to be implemented in the affected areas during the winter season. The unit cost in the below table included 15% for the transportation and operational related expenses.

Type of assistance	HHs targeted for assistance	Unit Cost (US\$)	Total Cost (US\$)
Winter Support (Cash/In-kind)	95,952	\$265	\$25,427,280

vii. Modality of distribution

As indicated in the Shelter/NFI/CCCM Cluster *Distribution Guidelines* the distribution of cash or in kind commodities needs to follow certain minimum guidelines to ensure the safety of the Partner and the beneficiaries

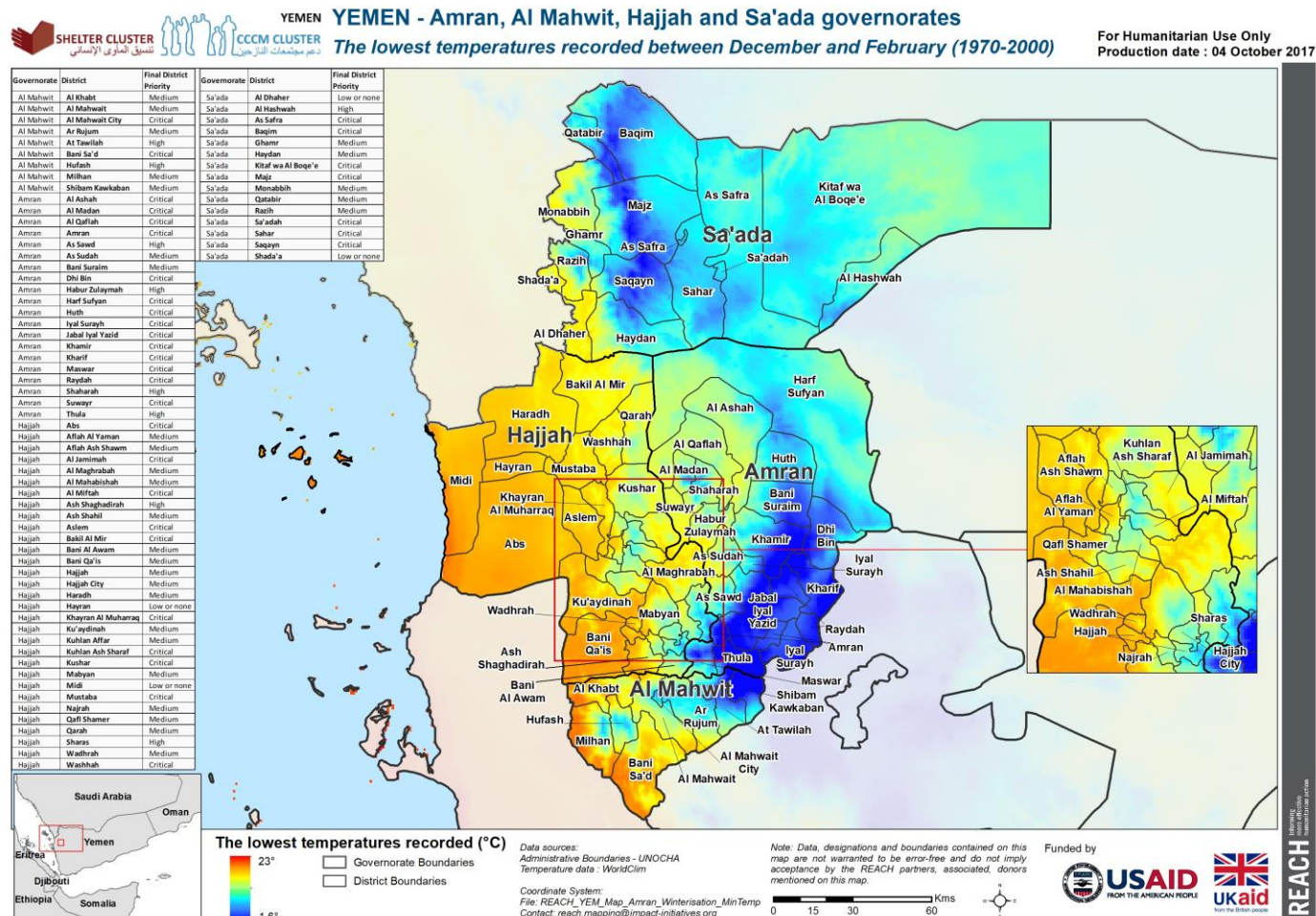
- Partners shall define the feasibility of implementing the abovementioned activities through cash or voucher or in-kind taking into account various factors in the targeted areas (i.e. availability of stocks in the local market, functionality of cash systems).
- Engagement with the relevant stakeholders including (Beneficiaries, communities, relevant Clusters, NGO's working in the location, local authorities, etc.) *Refer to responsibilities of stakeholders in guidelines.*
- Assessment and verification of the target population is essential to verify the populations that are in need of the winter assistance. The assessment should also verify locations that can be provided with cash/voucher assistance and those that have to be provided with in kind assistance.
- Ensure security and access to the location both for Partners and the beneficiaries can be sustained

- Ensure that a complaints mechanism is established and well publicised before the start of the distribution so that beneficiaries are aware of how their grievances would be addressed.
- Post distribution monitoring including qualitative and quantitative information including information on whether the project achieved its outcomes of making the target beneficiaries less vulnerable to the winter and qualitative information on the satisfaction of the beneficiaries and the use of the cash or in kind input.

viii. General Note

- Reference shall be made to the Health Cluster on the provision of mosquito nets during the winter season in hot areas which are vulnerable to malaria and / or other diseases.
- Partners could support the strategy through the conduct of assessment and distribution of cash or in kind assistance or through conducting assessments that could be targeted by other Partners.

Annex I: Maps of priority governorates and districts during winter season¹



¹ The maps were developed with support from REACH



SHELTER CLUSTER
تنسيق المأوى الإنساني



CCCM CLUSTER
دعم مجتمعات النازحين

YEMEN

Finalized on 10th of October 2017



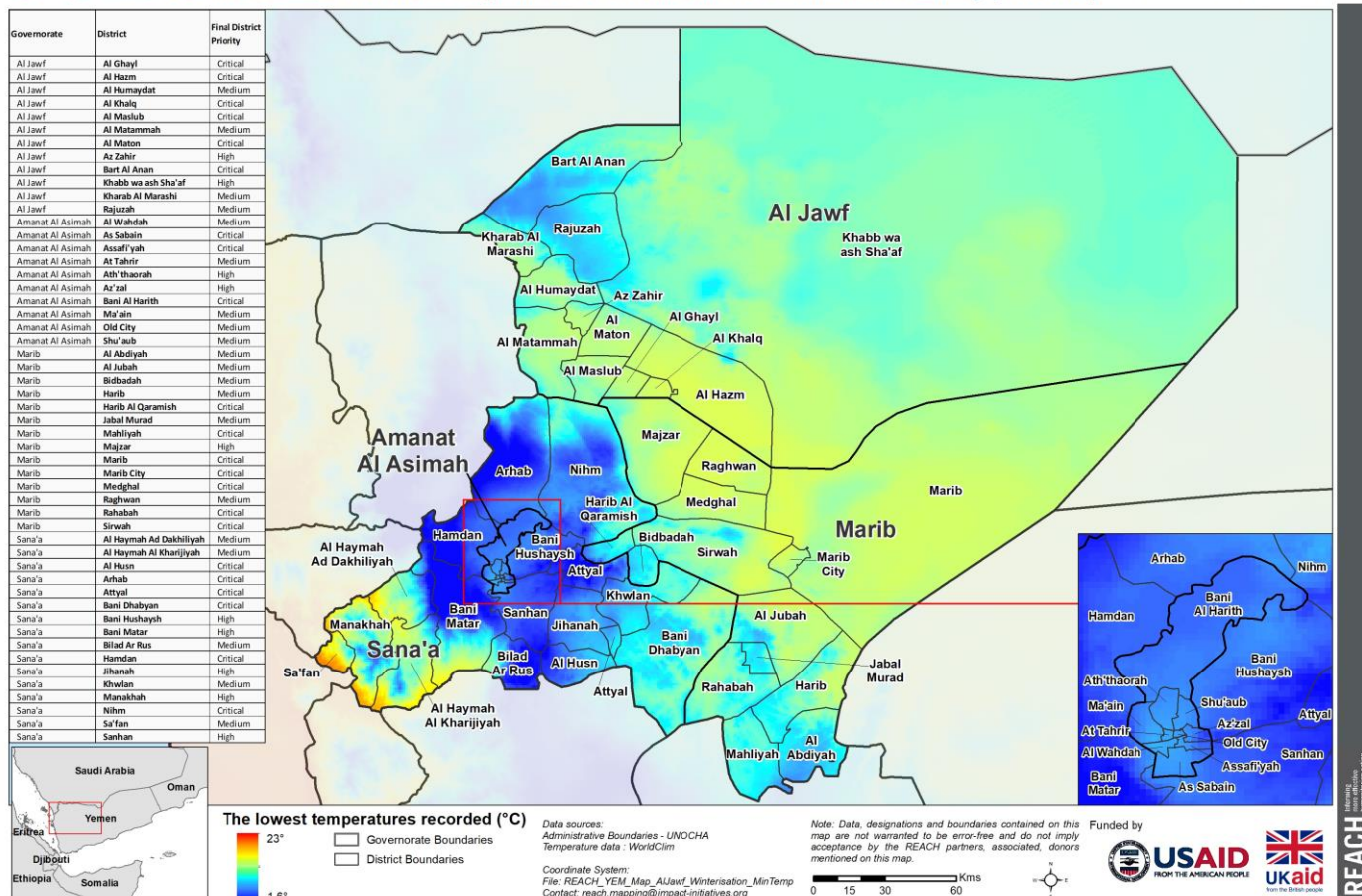
YEMEN

YEMEN - Al Jawf, Amanat Al Asimah, Marib and Sana'a governorates

The lowest temperatures recorded between December and February (1970-2000)

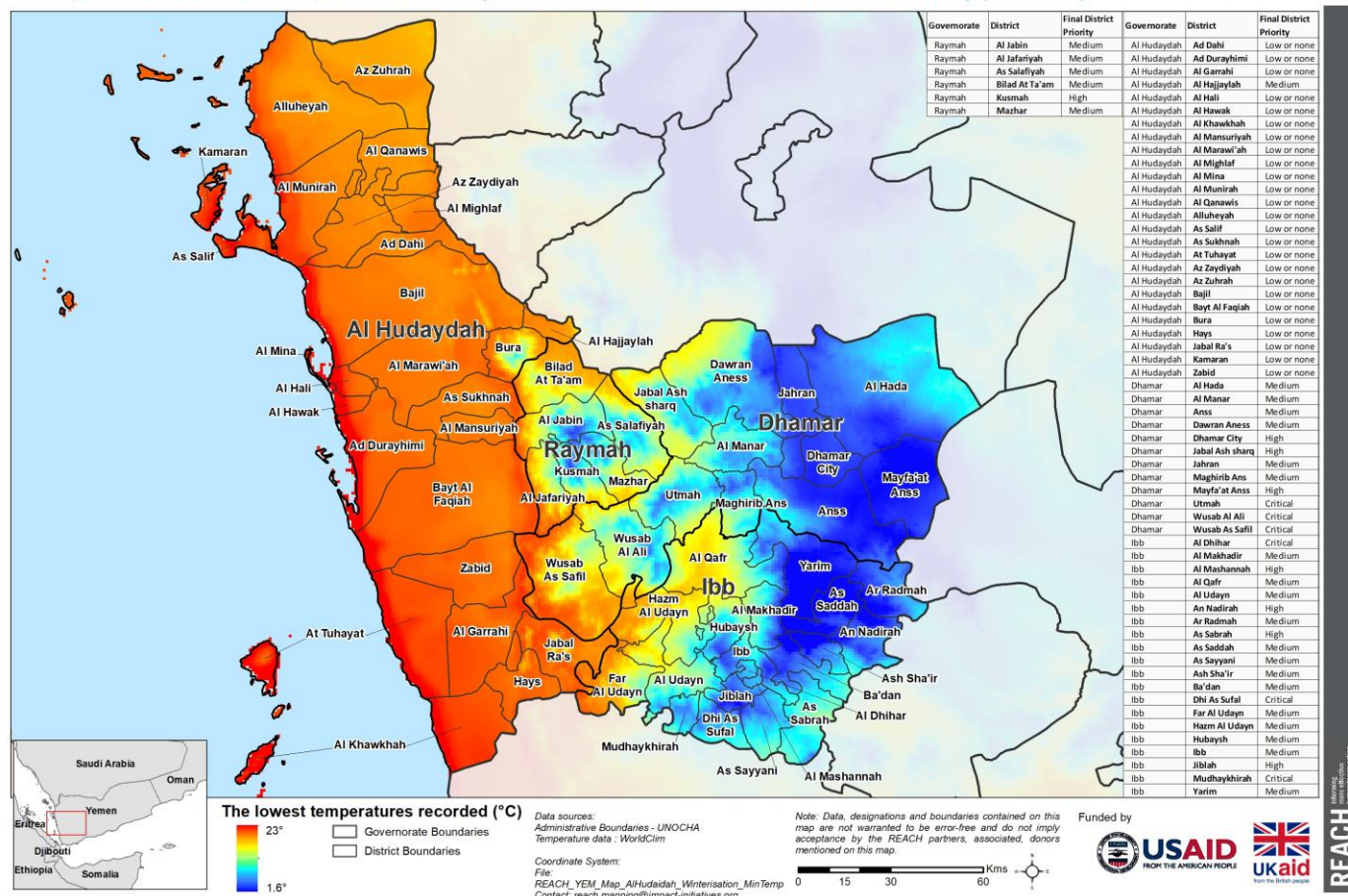
For Humanitarian Use Only

Production date : 04 October 2017



YEMEN - Al Hudaydah, Raymah, Dhamar and Ibb governorates
The lowest temperatures recorded between December and February (1970-2000)

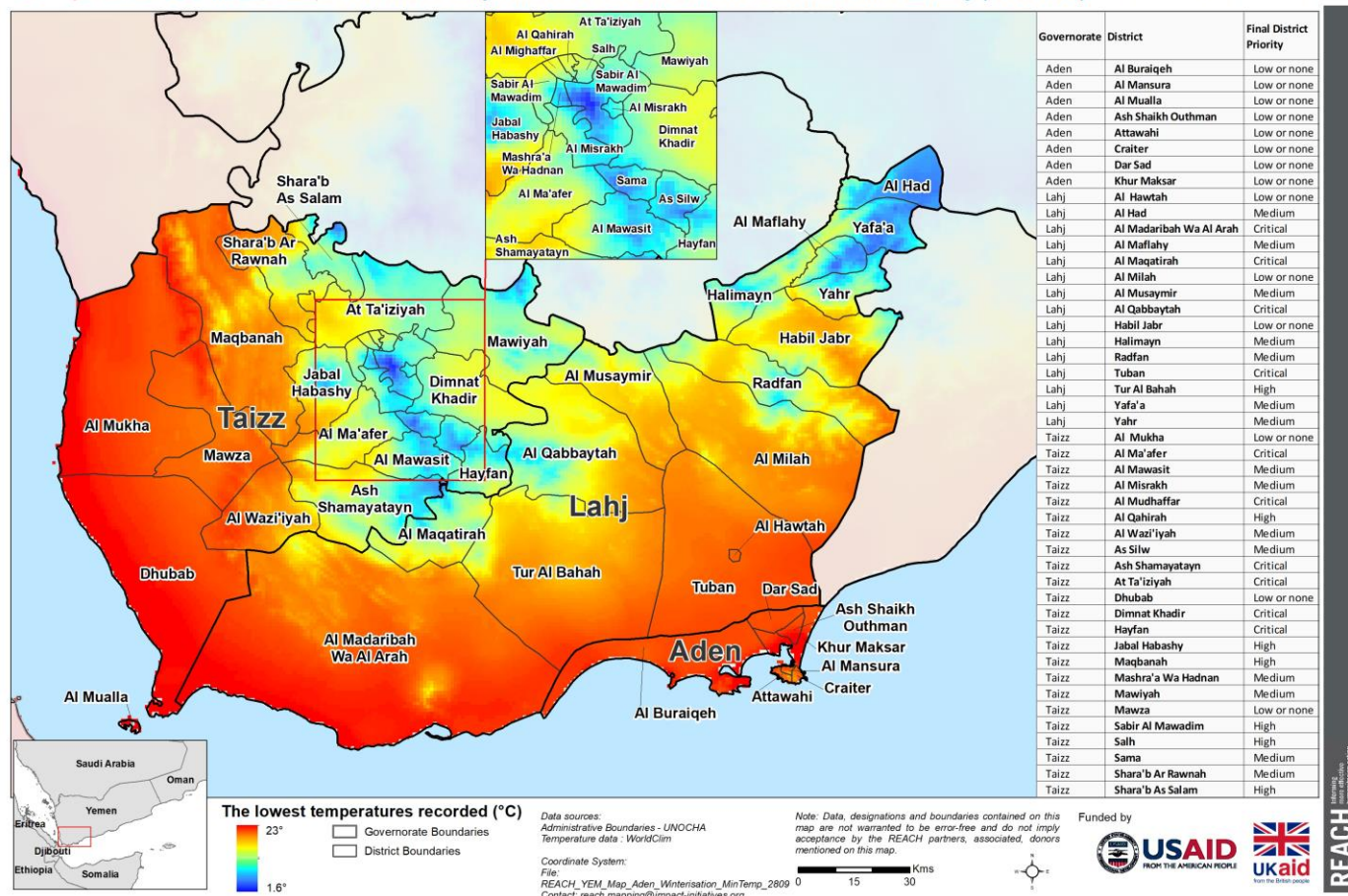
For Humanitarian Use Only
Production date : 04 October 2017



YEMEN - Aden, Lahj and Taizz governorates

The lowest temperatures recorded between December and February (1970-2000)

For Humanitarian Use Only
Production date : 04 October 2017





SHELTER CLUSTER
تنسيق المأوى الإنساني



YEMEN
دعم مجتمعات النازحين
CCCM CLUSTER

YEMEN

Finalized on 10th of October 2017



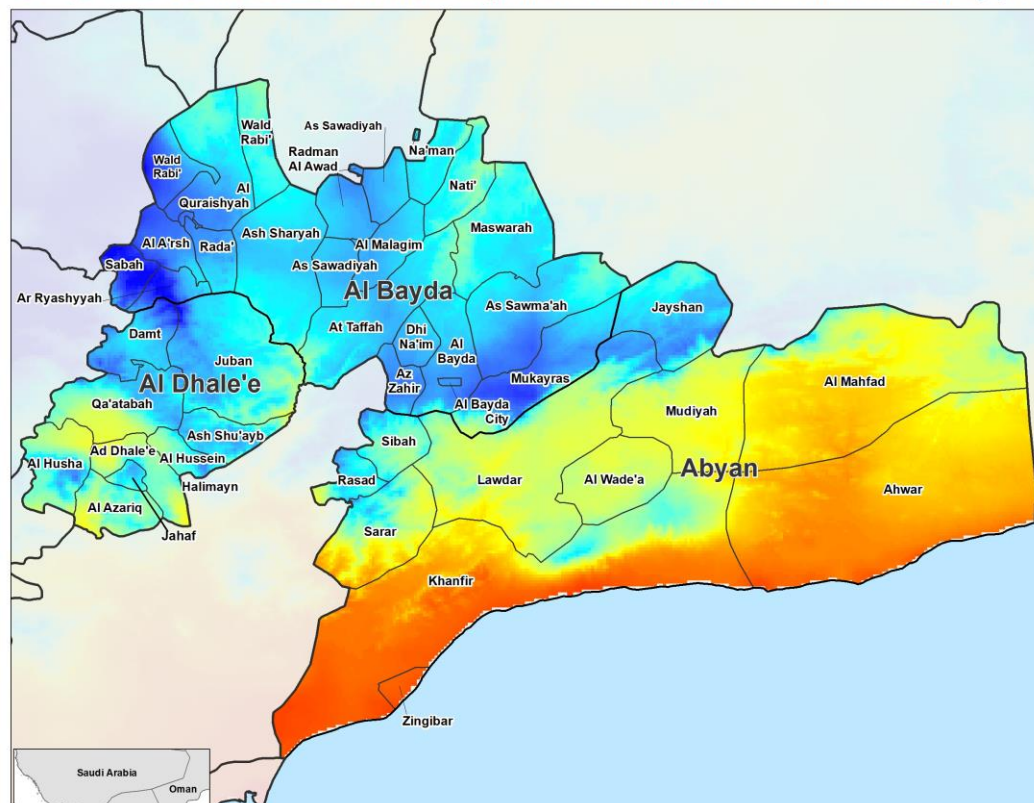
YEMEN

YEMEN - Abyan, Al Bayda and Al Dhale'e governorates

The lowest temperatures recorded between December and February (1970-2000)

For Humanitarian Use Only

Production date : 04 October 2017



The lowest temperatures recorded (°C)



□ Governorate Boundaries
□ District Boundaries

Data sources:
Administrative Boundaries - UNOCHA
Temperature data - WorldClim

Coordinate System:
File: REACH_YEM_Map_Abyan_Winterisation_MinTemp
Contact: reach_mapping@impact-initiatives.org

Note: Data, designations and boundaries contained on this map are not warranted to be error-free and do not imply acceptance by the REACH partners, associated, donors mentioned on this map.

0 15 30 60 Kms.

Funded by



FROM THE AMERICAN PEOPLE



turn the British people

REACH



SHELTER CLUSTER
تنسيق المأوى الإنساني



CCCM CLUSTER
دعم مجتمعات النازحين

YEMEN

Finalized on 10th of October 2017



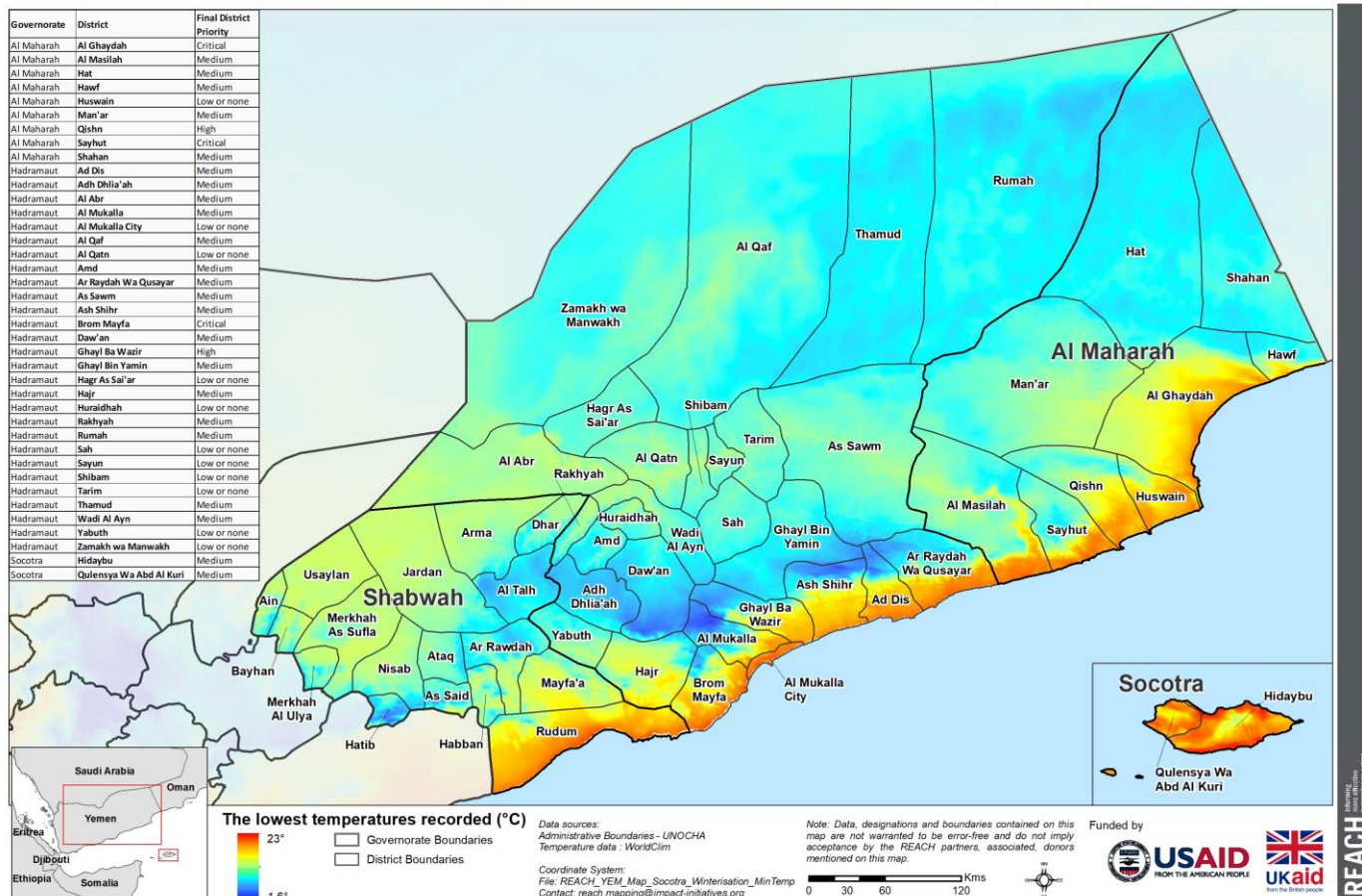
YEMEN

YEMEN - Al Maharah, Hadramaut and Socotra governorates

The lowest temperatures recorded between December and February (1970-2000)

For Humanitarian Use Only

Production date : 04 October 2017



Annex II: Table of the prioritization indicators mentioned in section ii scored and weighted in addition to the number of Households in need and Households targeted. The locations captured in the below table reflected the locations with critical priority.

Gov_Name	District_Name	PIN GAP	PIN	Cholera	PWSN	% IDPs & IDP returnees / HC	# of IDPs Hosting Sites	MIN Temperature (°C)	Total Score	Priority	# of HHs In Need	# of HHs Targeted
Abyan	Khanfir	2	2	2	20	8	3	8	45.0	Critical	2,265	680
Al Bayda	Al Bayda City	4	2	2	20	16	3	8	55.0	Critical	1,100	330
Al Dhale'e	Ad Dhale'e	4	4	2	20	16	3	8	57.0	Critical	3,168	950
Al Dhale'e	Al Hussein	4	2	2	20	16	0	8	52.0	Critical	1,643	493
Al Dhale'e	Damt	4	2	2	20	12	3	8	51.0	Critical	2,088	626
Al Dhale'e	Jahaf	4	2	2	20	8	6	8	50.0	Critical	806	242
Al Dhale'e	Al Azariq	4	2	2	20	8	0	8	44.0	Critical	965	290
Al Jawf	Al Maton	4	2	2	20	16	12	4	59.5	Critical	2,532	760
Al Jawf	Al Hazm	4	2	2	20	16	6	4	53.5	Critical	1,340	402
Al Jawf	Al Maslub	4	2	1	15	16	6	4	48.0	Critical	843	253
Al Jawf	Al Ghayl	1	2	2	15	16	3	4	43.0	Critical	315	95
Al Jawf	Al Khalq	4	2	1	20	8	6	4	45.0	Critical	440	132
Al Jawf	Bart Al Anan	4	2	1	5	12	9	8	40.5	Critical	1,976	593
Al Maharah	Sayhut	4	2	1	15	16	0	8	45.5	Critical	502	151
Al Maharah	Al Ghaydah	4	2	1	20	8	0	8	43.0	Critical	445	134
Al Mahwit	Bani Sa'd	4	4	2	20	12	0	4	46.0	Critical	3,037	911
Al Mahwit	Al Mahwait City	4	2	2	20	8	0	8	44.0	Critical	400	120
Amanat Al Asimah	As Sabain	4	8	1	20	16	0	8	57.0	Critical	20,772	6,232
Amanat Al Asimah	Assafi'yah	4	8	2	15	16	0	8	52.5	Critical	7,578	2,273
Amanat Al Asimah	Bani Al Harith	4	8	2	10	12	3	8	47.0	Critical	7,184	2,155
Amran	Khamir	2	4	2	20	16	6	12	61.5	Critical	3,707	1,112
Amran	Harf Sufyan	4	2	2	20	16	12	8	64.0	Critical	1,835	551
Amran	Amran	4	4	2	20	16	3	12	61.0	Critical	6,617	1,985
Amran	Al Madan	3	2	2	20	12	3	8	50.0	Critical	1,074	322
Amran	Jabal Iyal Yazid	4	4	2	20	12	0	12	53.5	Critical	2,996	899
Amran	Raydah	2	2	2	20	12	3	12	53.0	Critical	1,317	395
Amran	Huth	4	2	2	15	16	6	8	53.0	Critical	1,627	488
Amran	Al Ashah	4	2	2	20	8	6	8	50.0	Critical	1,196	359
Amran	Al Qafrah	4	2	2	15	12	6	4	45.0	Critical	1,241	372
Amran	Iyal Surayh	1	2	1	20	8	6	12	50.0	Critical	1,395	419
Amran	Kharif	4	2	2	15	12	3	12	49.5	Critical	1,723	517
Amran	Dhi Bin	4	2	2	15	12	0	12	47.0	Critical	1,211	363
Amran	Suwayr	3	2	2	5	16	12	4	44.0	Critical	3,977	1,193
Amran	Maswar	2	2	2	10	16	0	12	44.0	Critical	2,121	636
Dhamar	Wusab As Safil	4	8	1	20	12	0	4	49.0	Critical	6,362	1,909
Dhamar	Wusab Al Ali	4	8	2	20	8	0	8	49.5	Critical	6,185	1,856
Dhamar	Utmah	4	8	2	10	16	3	8	51.0	Critical	11,707	3,512
Hadramaut	Brom Mayfa	4	4	1	20	16	6	8	58.5	Critical	2,443	733
Hajjah	Mustaba	4	8	2	20	16	0	4	53.5	Critical	6,976	2,093

Hajjah	Abs	4	8	1	20	16	6	4	59.0	Critical	23,880	7,164
Hajjah	Bakil Al Mir	3	6	1	20	16	3	4	53.0	Critical	2,646	794
Hajjah	Aslem	3	4	1	20	16	3	4	51.0	Critical	5,630	1,689
Hajjah	Khayran Al Muharra	3	6	2	20	12	6	4	52.5	Critical	3,183	955
Hajjah	Kushar	4	8	2	15	16	0	4	48.5	Critical	3,578	1,073
Hajjah	Kuhlan Ash Sharaf	4	6	2	20	12	0	4	48.0	Critical	2,254	676
Hajjah	Al Miftah	2	4	1	20	12	0	4	43.0	Critical	1,511	453
Hajjah	Al Jamimah	4	6	2	20	8	0	4	44.0	Critical	1,484	445
Hajjah	Washhah	4	8	2	5	16	3	4	42.0	Critical	9,782	2,935
Ibb	Dhi As Sufal	2	6	1	20	12	12	8	61.0	Critical	6,949	2,085
Ibb	Mudhaykhirah	4	4	1	15	12	6	8	49.5	Critical	3,094	928
Ibb	Al Dhihar	1	2	1	10	8	12	8	42.0	Critical	2,014	604
Lahj	Tuban	4	4	1	20	16	3	4	52.0	Critical	3,146	944
Lahj	Al Qabbaytah	2	6	1	10	16	6	8	48.5	Critical	4,899	1,470
Lahj	Al Maqatirah	4	4	1	15	12	0	8	44.0	Critical	2,794	838
Lahj	Al Madaribah Wa Al Arah	4	4	1	10	16	3	4	41.5	Critical	3,529	1,059
Marib	Marib City	4	6	1	20	16	9	4	60.0	Critical	6,391	1,917
Marib	Sirwah	4	2	1	20	16	12	8	62.5	Critical	1,868	560
Marib	Medghal	4	2	1	20	16	9	4	55.5	Critical	657	197
Marib	Harib Al Qaramish	2	2	1	15	16	6	8	49.5	Critical	408	122
Marib	Marib	4	2	1	10	16	12	4	49.0	Critical	1,885	566
Marib	Rahabah	4	2	1	10	16	3	8	43.5	Critical	460	138
Marib	Mahliyah	4	2	1	5	16	6	8	42.0	Critical	1,234	370
Sa'ada	Sahar	4	6	1	20	16	0	8	54.5	Critical	8,326	2,498
Sa'ada	Sa'adah	1	4	1	20	16	0	8	49.5	Critical	5,980	1,794
Sa'ada	Kitaf wa Al Boqe'e	4	2	1	20	16	0	8	51.0	Critical	2,213	664
Sa'ada	Majz	4	4	1	20	12	0	12	52.5	Critical	4,012	1,204
Sa'ada	As Safra	1	4	1	15	16	0	8	44.5	Critical	3,590	1,077
Sa'ada	Baqim	1	2	1	15	16	0	8	42.5	Critical	608	182
Sa'ada	Saqayn	4	4	1	5	16	0	12	41.5	Critical	8,477	2,543
Sana'a	Nihm	4	6	2	20	16	0	8	56.0	Critical	2,023	607
Sana'a	Arhab	3	6	2	20	12	3	12	57.5	Critical	3,779	1,134
Sana'a	Bani Dhabyan	4	4	1	20	16	0	8	52.5	Critical	3,405	1,022
Sana'a	Attyal	4	2	2	20	16	0	12	55.5	Critical	2,405	722
Sana'a	Hamdan	4	6	2	20	8	3	12	55.0	Critical	2,509	753
Sana'a	Al Husn	4	4	1	20	8	0	12	49.0	Critical	782	235
Shabwah	Ataq	4	8	1	20	16	3	8	59.5	Critical	7,005	2,102
Shabwah	As Said	4	4	1	20	16	0	8	52.5	Critical	2,724	817
Shabwah	Rudum	4	2	1	20	16	6	8	56.5	Critical	1,434	430
Shabwah	Usaylan	4	2	1	20	12	12	4	54.5	Critical	1,082	325
Shabwah	Nisab	1	2	1	20	12	3	8	46.5	Critical	1,156	347
Taizz	Ash Shamayatayn	4	8	1	20	16	12	8	68.5	Critical	9,759	2,928
Taizz	Dimnat Khadir	4	8	1	5	16	12	8	53.5	Critical	9,743	2,923
Taizz	Hayfan	3	8	1	5	16	6	8	46.5	Critical	7,877	2,363
Taizz	Al Mudhaffar	4	8	1	5	16	3	4	41.0	Critical	6,065	1,820
Taizz	At Ta'iziyah	3	8	2	5	8	12	8	45.5	Critical	2,888	866
Taizz	Al Ma'afer	2	4	1	5	12	9	8	40.5	Critical	3,594	1,078