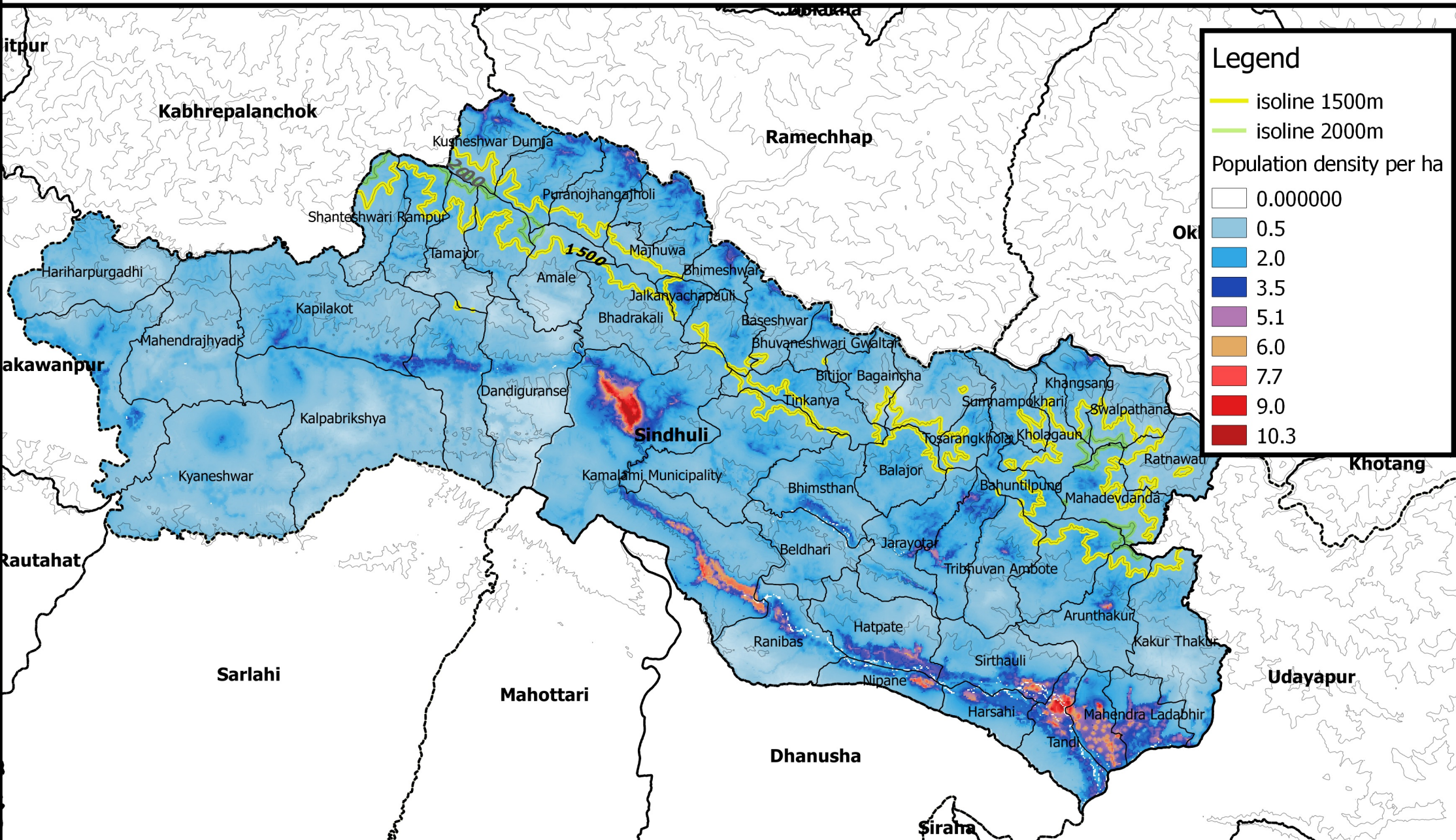


# Maps for Winterization Planning: Elevation and Population Density - Sindhuli



This map was produced by the Shelter Cluster Information Management Team to help agencies better plan for winter distributions. It is to be used together with the Winterization technical annexes that can be found at [www.sheltercluster.org](http://www.sheltercluster.org). The population density data is based on 2011 census. Agencies will still need to conduct their own assessment and consult the local authorities for latest population data.



**Shelter Cluster Nepal**  
[ShelterCluster.org](http://ShelterCluster.org)  
 Coordinating Humanitarian Shelter