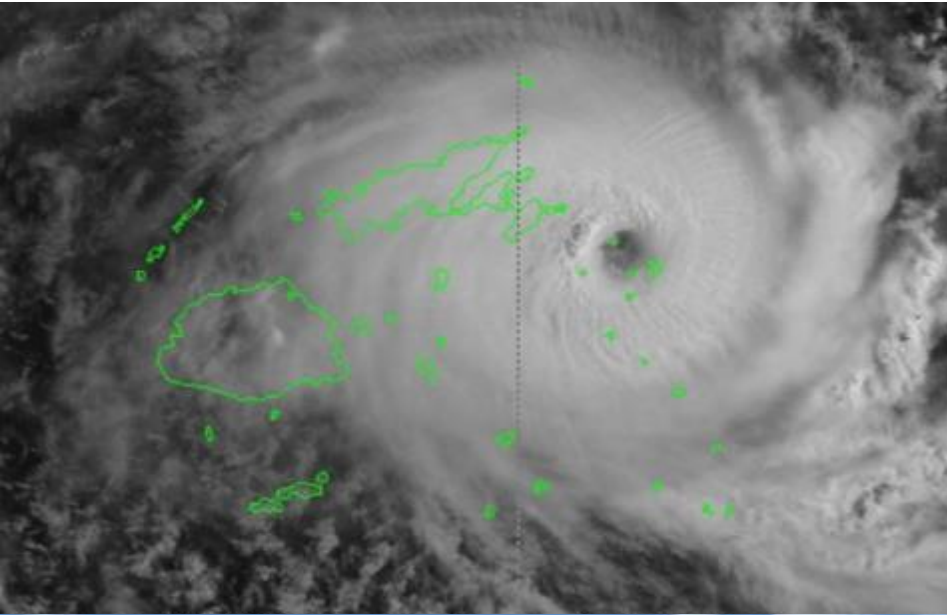


TC WINSTON – IM Challenges



Shelter Cluster Fiji
ShelterPalestine.org & ShelterCluster.org
Coordinating Humanitarian Shelter

How can we monitor & provide analysis with a lack of activity reporting, information sharing and government coordination?



Cyclone Winston

- **Category 5 cyclone**, strongest to make landfall in South Pacific, on 20th/21st February 2016.
- **State of natural disaster called for 60 days**, activating military-led response mechanism.
- **31,200 plus home affected** – 40% of population, mostly rural. **44 people confirmed dead**.
- **62,000 people were evacuated** in close to 900 evacuation centres.
- Estimated damaged \$1.4b, Flash Appeal for **\$5.1m for shelter (\$1.1m funded to one agency)**



Response

- **High capacity of government** to respond through military response mechanism
- **Direct bi-lateral support of foreign governments** via in kind donations & military support, vs relatively low humanitarian presence and output.
- **\$50m USD Help for Homes Initiative program** – financial assistance from government to help private homeowners start repairing and rebuilding.
- Shelter Cluster newer to country, led by Min of Local Government, though **shelter & settlements fell under seven ministry portfolios.**



Challenges/Constraints

- Military/government dominated response led to less reporting, information sharing, coordination and a more convoluted response framework.
- Relatively small humanitarian presence, little funding and limited humanitarian space to work within government response framework.
- Lack of shelter specific assessment, absence of government support to carry out own.
 - Considering displacement, DTM conducted but release of findings delayed by government
- Ministry lead of cluster ill-suited to address majority of affected population's shelter needs, and initially intent to narrow targeting solely to informal settlers.
- Government extremely quick to implement Help for Homes Initiative but slow to support with trainings, IEC & impact monitoring.
- Less leverage at national level to gather information and effectively coordinate with national government.



Activity tracking beyond the 3W...



Guesstimate from incomplete reporting

Province/ Island	Village	Date	Total Tarps	Delivered By	Remarks
Koro Island		6-Mar-16	3000kg	NZDF Rotary Wing Detachment	3000 kg of tents
unk	Bureiwai	1-Mar-16		NDMO	received Tents



Stock dispatches

From: [REDACTED]

Sent: Friday, March 25, 2016 11:43 AM

To: im1.fiji

Subject: Re: cargo import tracking sheet, stock take, dispatch tracker

Hi Ryan,

The percentage split for China Aid shelter stock is 40% for the West & 20% for the remainder of the Divisions. The previous shelter stock has been



Partial previews of sit reps



Tropical Cyclone Winston Western Division Report



6.2 China Aid

The Western Division also receives relief aids from the people of the Republic of China. Details of items received are tabulated on Table 5

Table 5

ITEMS	UNIT	TOTAL	RA	TAVUA	BA	LTKA	NADI	N/RIVATU	SUVA	BAL
TENT & FRAME	SET	1843	602	185	79	136	-	-	650	191
WATER PROOF CANVAS	EA	5800	569	31	250	86	4	-	-	4860
PILLOW	CTN	1292	271	100	47	41			-	833

Note : This figures will continuously change when the distribution progress until the entire needy are attended to.



Internal sit reps



FRCS EOC INTERNAL SITUATION REPORT	
Event Name: TC Winston	Sit Rep Number: 18
From: Fiji Red Cross Society	Date / Time: 19/03/16 - 0830hrs
Report Period: 19 TH March, 2016	Next Report Due: 0830hrs 20/03/2016

1. HIGHLIGHTS:

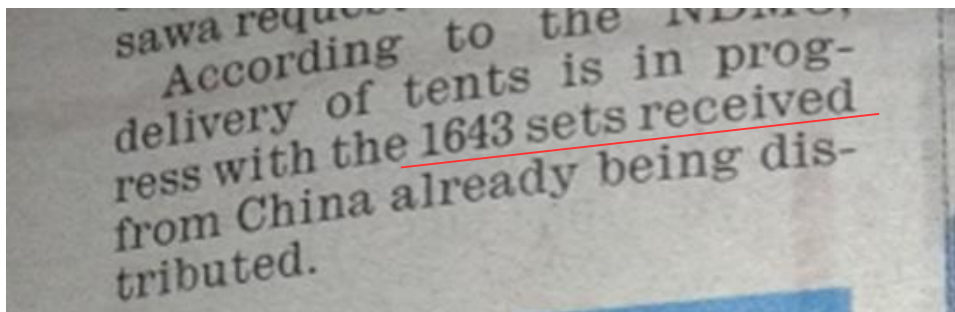
- Verified data of HH assessed up to date by the FRCS is **15630HH**
- Total number of HH assisted by FRCS up to date is **8545HH**

2. ASSESSMENT AND DISTRIBUTION (From the 4 Divisions)

DISTRICT	TARGET # HH	# of Communities Assessed	# of Communities Distributed	ASSESSMENT	DISTRIBUTION	Tarpaulins	10 L Jerry cans	Blankets	Black Pacle	Dignity Kit	Hygiene kits	Kitchen Set	Baby Kits	Plastic bucket	Shelter T/kit	Hurricane Lantern	Mosquito Coils	Candles	Bathing Soap	Tents	Solar Lanterns	Fiji Water (PCS)	WASH Kit	Mosquito Net
CENTRAL PROVINCE	3322			1842	1146	1416	1283	1494	877	1559	919	628	0	115	254	0	0	0	0	0	0	0	0	0
TAILEVU				1498	1117	1358	1258	1429	848	1559	899	608	0	115	234	0	0	0	0	0	0	0	0	0
NAITASIRI				344	29	58	25	65	29	0	20	20	0	0	20	0	0	0	0	0	0	0	0	0
NORTHERN PROVINCE	2990	99	86	1316	1434	1105	774	618	1667	253	906	503	56	15	98	10	62	20	0	0	1	0	0	0
LABASA		-	-	0	0	0	0	0	0	0	0	0	0	0	0	0	0	0	0	0	0	0	0	0



Newspapers...



Distributions

A photograph of a newspaper clipping. At the top, a red rectangular box highlights the text: "According to the NDRC, delivery of tents is in progress with the 1643 sets received from China already being distributed." Below this, a blue header reads "West damage report". The report is divided into two sections: "Partially damaged" and "Completely destroyed", each followed by a list of locations and numbers. A red line extends from the bottom of the red box in the top image towards the "Distributions" section header on the left.

According to the NDRC, delivery of tents is in progress with the 1643 sets received from China already being distributed.

West damage report

Partially damaged

- Rakiraki — 3408
- Tavua — 2711
- Nadarivatu — 270
- Ba — 4939
- Lautoka — 1810
- Yasawa — 156
- Nadi — 579
- Nadroga — 457

Completely destroyed

- Rakiraki — 4003
- Tavua — 736
- Nadarivatu — 214
- Ba — 1642
- Lautoka — 605
- Yasawa — 175
- Nadi — 141
- Nadroga — 117

Damage Reports



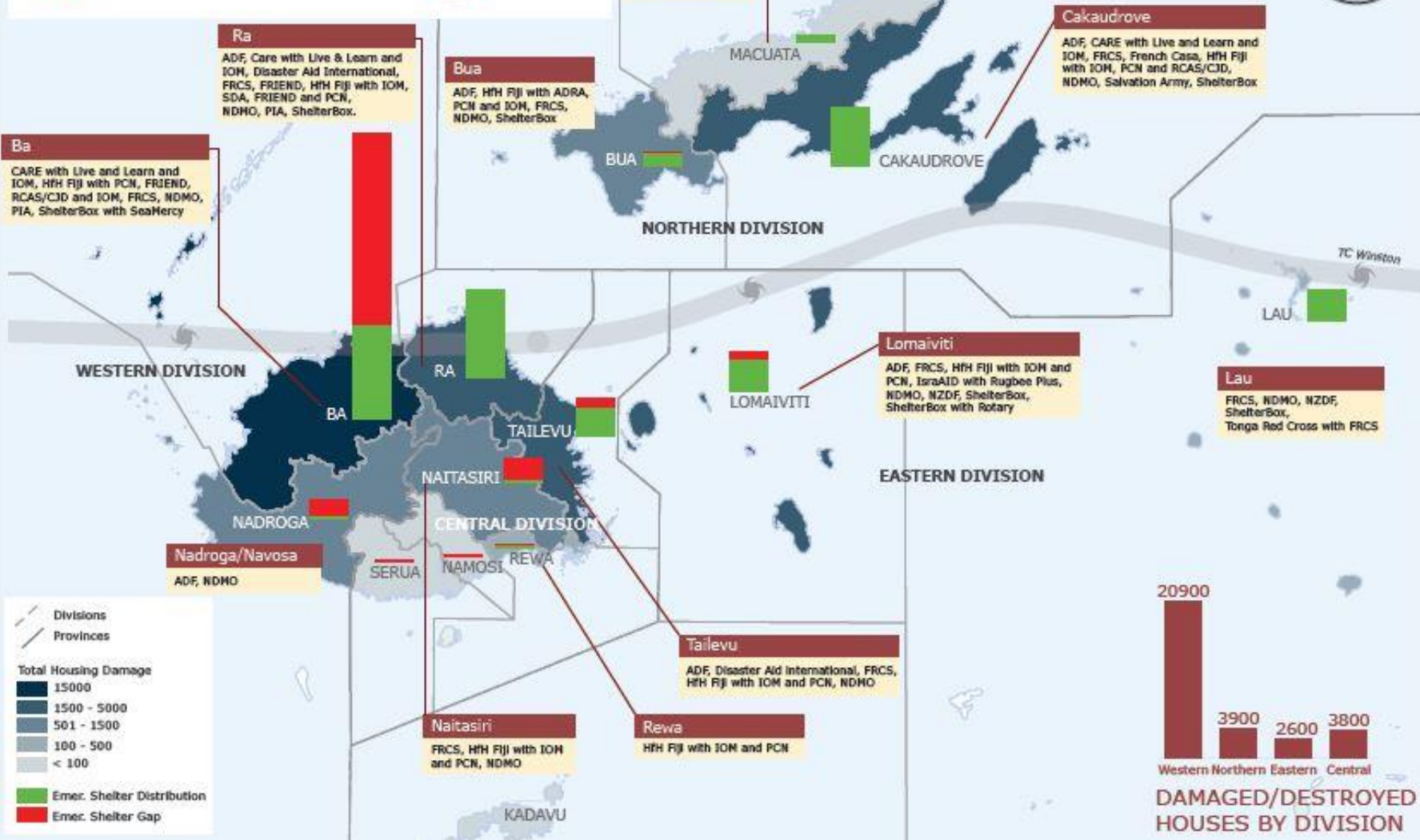


31,200
houses damaged

37%
totally damaged



63%
partially damaged



RESPONSE

(Base map OCHA & Shelter Cluster – Thematic Data: Government of Fiji damage assessments)

Objective 1 Emergency shelter



More than **36,600 households** have received some form of **emergency shelter assistance**, including tarpaulins (2 per Household), tents or shelter kits and toolkits¹

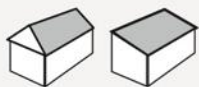
Objective 2 Support to self recovery



24,505 households have received **vouchers to purchase construction material** through the Government-led Help for Homes initiative



More than **3,871 households** have received, or will receive, **shelter fixing kits, construction materials or repair assistance**



300 households have received or will receive a **core or a transitional shelter** to support Build Back Safer awareness and training for the community

Objective 3 Technical Support



More than **19,765 households** have received emergency shelter awareness

At least **2,300 semi-skilled builders/skilled carpenters** will access Build Back Safer technical training

(1) Note: Where Households data is missing, assumptions were made on the number of households (HH) reached with emergency shelter interventions. The assumption is HH received either an average of 2 tarps, or 1 tent, or 1 shelter box, or 1 shelter kit, or 1 tool kit, and that there weren't multiple items distributed to the same one HH.



What IM services can we provide in this environment?



To do...

- Frame context & constraints of information management
- Work with partners to identify priority information management needs
- Provide good enough, minimum information management services tailored to partner priorities and based on best guesstimates

Partners prioritizing coordination needs...

Coordination	Technical	IM
Advocacy for more funding	WASH in shelter	Emergency shelter gap analysis
Raising awareness on recovery gaps	Locally procured timber issues	Mapping and GIS
Guidance on cross-cutting issues	Build back safer technical training	Monitoring and reporting of “Help for Homes Initiative”
Disaster risk reduction		

Partners prioritizing coordination needs...

Coordination	Technical	IM
Advocacy for more funding	WASH in shelter	Emergency shelter gap analysis
Raising awareness on recovery gaps	Locally procured timber issues	Mapping and GIS
Guidance on cross-cutting issues	Build back safer technical training	Monitoring and reporting of “Help for Homes Initiative”
Disaster risk reduction		

Prime Minister's Speech



THE FIJIAN GOVERNMENT

[CONTACT US](#)

[SITEMAP](#)

Search:

[HOME](#)

[MEDIA CENTER](#)

[GOVT DIRECTORY](#)

[FIJI LAWS](#)

[POLICY & DEV](#)

[PHOTOS & VIDEO](#)

[BUDGET](#)

[ABOUT FIJI](#)

[Media Center](#) > [Speeches](#) > [HON PM BAINIMARAMA SPEECH AT LAUNCH OF HELP FOR HOMES INITIATIVE AND LAUNCH OF ADOPT A SCHOOL WEBSITE](#)



HON PM BAINIMARAMA SPEECH AT LAUNCH OF HELP FOR HOMES INITIATIVE AND LAUNCH OF ADOPT A SCHOOL WEBSITE

4/9/2016

Honourable Ministers,
Your Excellencies,
Members of the Diplomatic Corps,
President and members of The Fiji Institution of Engineers,
Representatives of civil society and the private sector,
Ladies and Gentlemen.

Bula vinaka and a very good morning to you all.

Seven weeks ago today, the biggest tropical cyclone the southern hemisphere has ever seen slammed into Fiji and left behind a trail of death, misery and destruction.

The families of the 44 people killed are still coming to terms with the sudden loss of their loved ones. Many of those who were crushed in their homes or were hit by flying debris are still recovering from their injuries. But we have come together as a nation in a united response to this tragedy in a way that has inspired every Fijian and impressed the rest of the world.

Our many friends in the international community have come to our assistance with a level of generosity and commitment that has deeply moved us. And with their help, we can be proud of what we have done over the past 49 days to get food, water and shelter to those who need it and begin the task of rebuilding their lives.



Shelter Cluster Fiji

[ShelterPalestine.org](#) & [ShelterCluster.org](#)
Coordinating Humanitarian Shelter

Damage assessment criteria for Help for Homes selection

HELP FOR HOMES

Damage Assessment Guide

It is important that households accurately report the level of damage sustained in severe Tropical Cyclone Winston in order

to receive the correct amount of funds on the electronic cards.

Below, please find examples of damaged homes and the level of assistance that they are eligible to receive.

Homes that have **PARTIAL ROOFING DAMAGE** will receive **\$1500**



Homes that have **COMPLETE ROOFING DAMAGE** will receive **\$3000**



Homes that are **FULLY DESTROYED** will receive **\$7000**



Shelter Cluster Fiji
ShelterPalestine.org & ShelterCluster.org
Coordinating Humanitarian Shelter

Help for Homes Targeting & Scope

Option 4: 12 Priority Affected Areas

Division	Total no. of Houses	Total Cost	Total no. of Teams	Total No. of Days
Western	19081	\$83,856,000	10	60
Eastern	2575	\$14,917,000.00	10	8
Northern	5227	\$21,989,000.00	10	16
Central	3724	\$17,644,000.00	10	12
Total	30,607	\$138,406,000	40	Less than 3 months

Help for Home Initiative

TOSHIBA



Implementation & extension of program

FUJI NEWS

Second phase of Help for Homes initiative

06:22 Wed Jul 20, 2016

The second phase of "Help for Home" initiative is expected to start next month.

This has been confirmed by Minister for Economy, Aiyaz Sayed Khaiyum.

More than 23,000 people affected by Tropical Cyclone Winston were assisted under the first phase of the Help for Homes initiative.

Sayed Khaiyum says second phase will continue in the areas that had missed out.

He says that they have allocated \$20 million for that and as announced in the budget they will be going back to the red zone areas to see any people who have been left out and they will be given priority.

Meanwhile, Government has spent \$88 million to assist people in the areas mostly affected by Tropical Cyclone Winston.

This including Koro, Taveuni, Southern Vanua Levu, Northern Viti Levu, Ovalau and Vanua Balavu.



Taken from/By: FBC News
Report by: Praneeta Prakash



Shelter Cluster Fiji

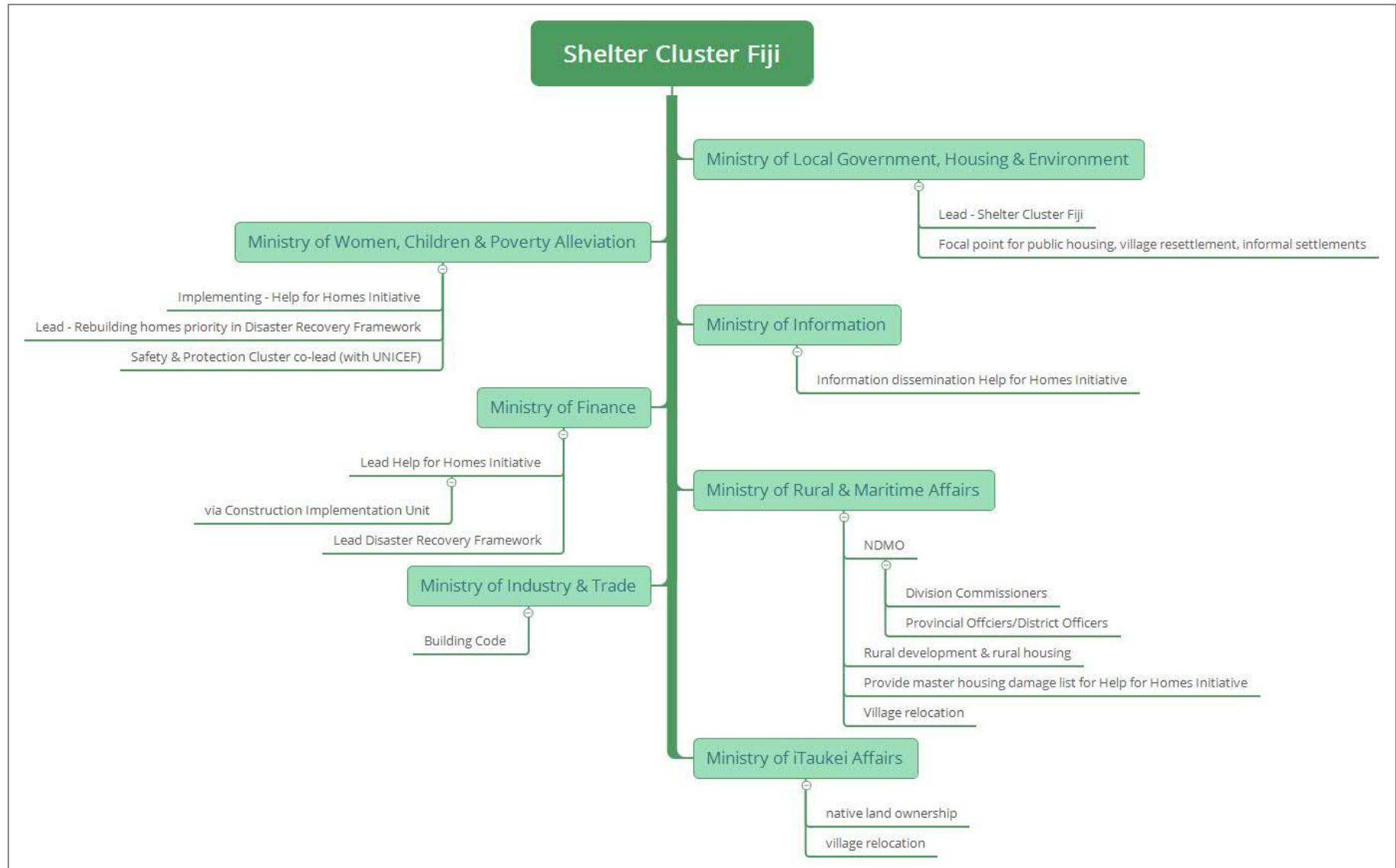
ShelterPalestine.org & ShelterCluster.org
Coordinating Humanitarian Shelter

Compile Help for Homes potential caseload

Location	Sum of Partly Damaged	Sum of Completely Destroyed	Total No. of Houses
Central	2106	1618	3724
Naitasiri	747	558	1305
Namosi	28	53	81
Rewa	188	45	233
Serua	49	12	61
Tailevu	1094	950	2044
Eastern	777	1794	2571
Lau	125	375	500
Lomaiviti	652	1419	2071
Northern	4646	1814	6460
Bua	929	361	1290
Cakaudrove	3685	1445	5130
Macuata	32	8	40
Western	12422	6660	19082
Ba	10291	3351	13642
Nadroga	726	272	998
Naitasiri	7	9	16
Ra	1398	3028	4426
Grand Total	19951	11886	31837



Coordination & information management support between relevant ministries and Shelter Cluster partners



Provide factsheets/summary on Help for Homes



Shelter Cluster and Help for Homes

Last updated 21st June

This document has been compiled by the Shelter Cluster team to provide partners with an overview of the current understanding of the Government of Fiji Help for Homes Initiative (HfH). The aim is to provide Shelter Cluster partners with a better understanding of how to plan and develop their recovery shelter activities for the TC Winston response, whilst complementing and supporting the Government's response plan.

For further information on this document please contact the Shelter Cluster team,

Mr Kolinio Bola kolinio.bola@govnet.gov.fj

Mr Vula Shaw vula.shaw@gmail.com

Xavier Genot coord1.fiji@sheltercluster.org

Ryan Smith im1.fiji@sheltercluster.org

Chris Howe tech1.fiji@sheltercluster.org

Key facts of the Help for Homes Initiative

Download the Prime Minister's speech [here](#). The text below has been extracted from the PM speech.

Number one priority is to rebuild Fiji and to "Build Back Better"

HfH initiative will provide financial assistance for homeowners to rebuild their homes themselves by giving them access to building materials.

- \$70 million FJD available for this initiative
- Ministry of Women Children and Poverty Alleviation (MoWC&PA) will take the lead role in the distribution of the e-cards across the affect areas, with the support to the Ministry of Finance and the Planning Office.

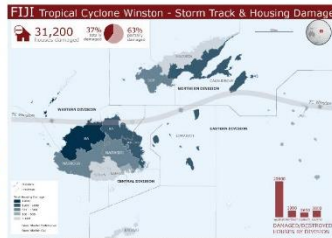
Factsheet & Infographic



Fiji January - June 2016



Building Back Safer 'Training the Trainers' pilot program held in May by Shelter Cluster Fiji and Habitat for Humanity Fij (Source: Shelter Cluster)



Base Data: UNOCHA COO, Thematic Data: Shelter Cluster Fiji

NEEDS ANALYSIS

- At least 31,200 houses were damaged or destroyed, affecting an estimated 156,000 people within those households across the Fijian archipelago. Immediate needs included distribution of emergency shelter items and NFIs such as tents, tarpaulins, shelter kits, kitchen sets and solar lights, supported by appropriate IEC material.
- Core & transitional shelters, Building Back Safer trainings for carpenters and homebuilders and technical support in complement of Government of Fiji-led 'Help for Homes Initiative' that provide vouchers to enable those affected in destroyed or damaged homes to purchase building materials.

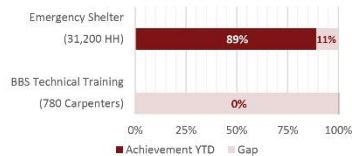
RESPONSE

- Shelter Cluster partners with the Government of Fiji have distributed over 27,600 households worth of emergency shelter, with 50,000 shelter items and NFI in total over the Flash Appeal period (to 21st May).
- Government of Fiji-led 'Help for Homes Initiative' provided vouchers to at least 23,000 households, for a total of \$88 million FJD (\$42m USD).

GAPS / CHALLENGES

- Critical funding gaps remain for Shelter Cluster Fiji partners in this transition to recovery to carry out programs supporting those most vulnerable with repair or retrofit of damaged homes or construction of core shelters for those with completely destroyed homes, in complement of the 'Help for Homes Initiative.'
- Funding & capacity to carry out timely implementation of Building Back Safer technical trainings programs at scale, to support communities in their shelter self-recovery process for appropriate use of building material provided through 'Help for Homes Initiative.'

COVERAGE AGAINST TARGETS



SHELTER CLUSTER FIJI TEAM

Cluster Coordinators
Kolinio Bola (Director of Housing - Ministry of Local Government, Housing & Environment)
kolinio.bola@govnet.gov.fj / +679-990-6438 &
Vula Shaw (Principal Administration Officer- Ministry of Local Government, Housing & Environment)
vula.shaw@govnet.gov.fj / +679-990-6177

Cluster Co-Lead
Xavier Génot (IFRC)
coord1.fiji@sheltercluster.org / +679-929-1920

Deputy Co-Lead
Subesh Prasad (IFRC)
coord2.fiji@sheltercluster.org / +679-999-0185

Technical Coordinator
Chris Howe (Australian Red Cross)
tech1.fiji@sheltercluster.org / +679-998-0173

KEY DATES

Crisis: 20/21 February 2016
Activation of Cluster: 27 February 2016
End of State of Natural Disaster: 19 April 2016
Flash Appeal Period: 21 February - 21 May 2016
SCF Lessons Learned Workshop: 8 July 2016

KEY DOCUMENTS & WEBSITE

- Shelter Cluster Humanitarian Action Plan
- Build Back Safer IEC
- Map - Flash Appeal Period Overview
- Shelter Cluster Fiji Website

KEY FIGURES

58 Cluster partners
31,200 Households in need

FUNDING (source: OCHA Financial Tracking Service)



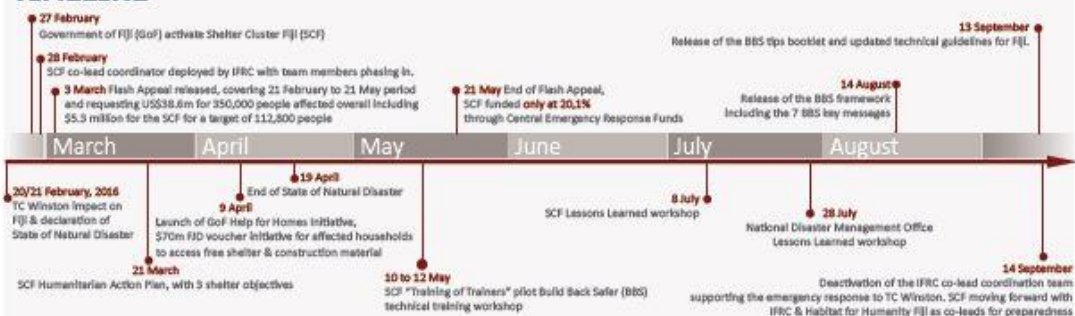
Tropical Cyclone Winston

September 14, 2016

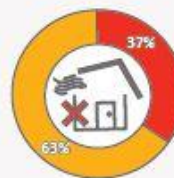
Between 20 and 21 February 2016, Tropical Cyclone (TC) Winston swept through the Fiji Islands as a Category 5 Storm with wind gusts up to 325 km/hr, and is estimated to be one of the most severe cyclones ever recorded in the South Pacific.

The Fiji Government reported TC Winston had affected more than 350,000 people (or some 40 percent of the population) across all four of Fiji's administrative divisions, damaging or destroying more than 31,200 houses.

TIMELINE



IMPACT



more than
31,200 houses
damaged or destroyed
19,700 (63%) damaged
11,500 (37%) destroyed

In the most affected islands, such as Koro, 100% of houses were damaged or destroyed (Source: PDNA)

