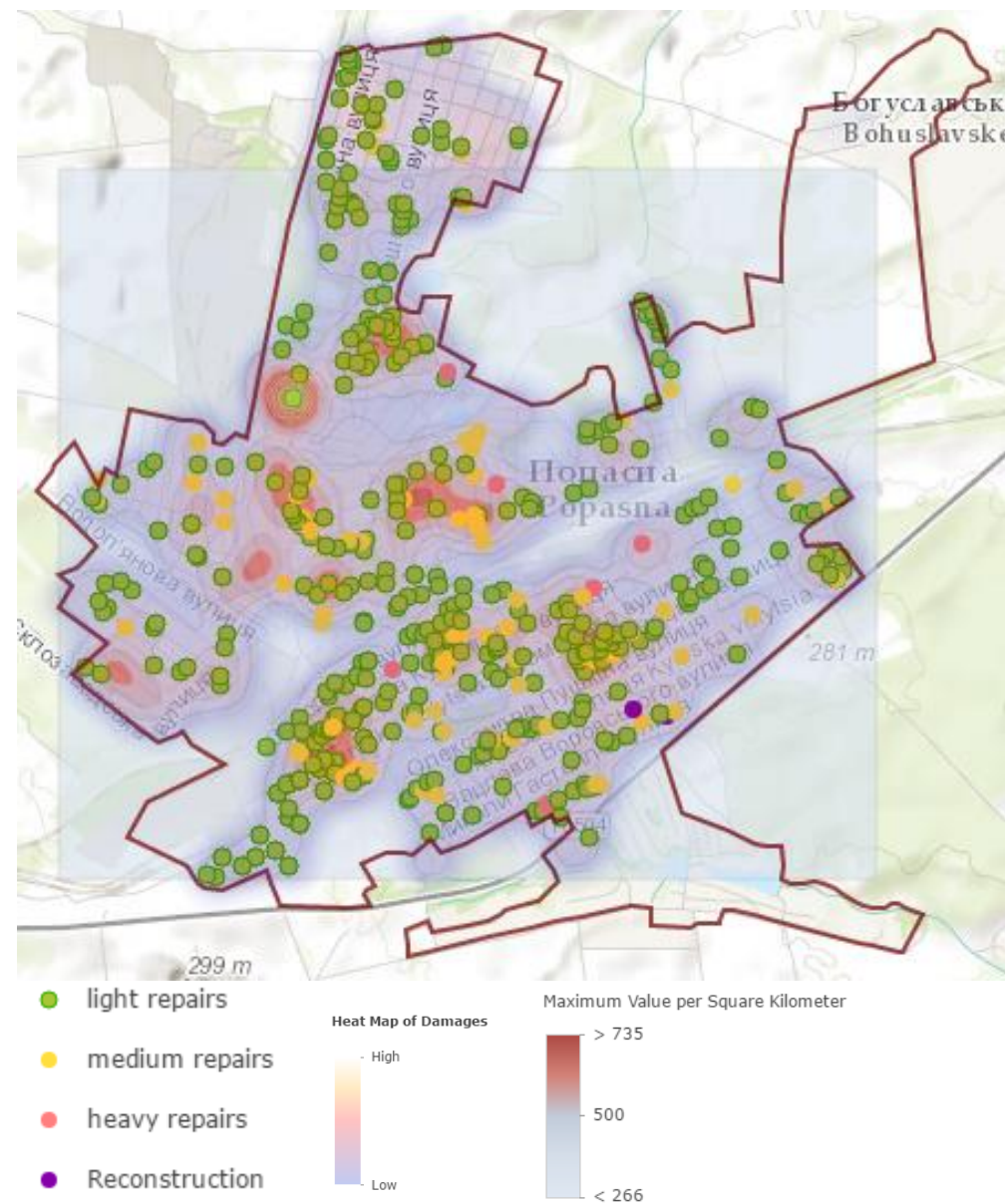


Field Monitoring Notes: Popasna Shelter and NFI Response

Popasna, Popasnianskiy Raion, Luhansk Oblast Ukraine

- Popasna city has been both a catchment area for IDPs coming from communities in NGCA such as Kirovsk, Stakhanov, and nearby Pervomaisk and a center of heavy shelling since the beginning of the crisis.
- More than **2000 buildings have been impacted** by various forms of shelling since the start of the conflict, with 16% of these being multi-story buildings and 82% being private homes.
- Presence of military personnel explains many secondary damages. Several **checkpoints are located near residential areas and military have appropriated abandoned homes**. Most of these damages are light damages, but several homes were heavily damaged in 2015 and continuous shelling makes them vulnerable to further decay.
- Tenure challenges exist for families who would like to repair their homes of parents or relatives that have passed away, though they do not have the ownership rights to do the repairs.
- Popasna has about **seven to eight stores** specializing in the sale of construction materials.
- Local officials see the opportunity for IDPs to settle within Popasna in the future as they have **available housing stock that can serve as affordable or social housing units for IDPs**. However; they require the means by which these homes can be transferred to such needy IDPs economically, legally, and justly.
- **During Winter 2016-2017**, 5 agencies (ADRA, Caritas, CRC, Mercy Corps, NRC, and UNHCR) assisted 374 households with provision of core winterization NFIs, 166 households and the Popasna Neurological Hospital with coal, and 323 households with insulated windows.



Shelter Partners Type of Repairs (Damage Database)

