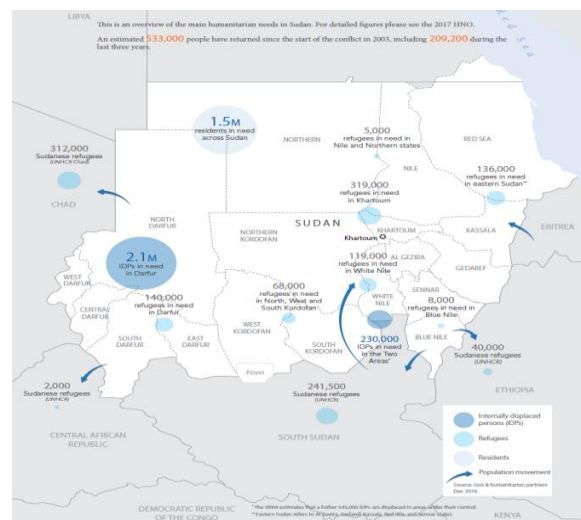




NFIs Distribution to IDPs in South Darfur



2017 Humanitarian Needs Overview –OCHA

Need analysis

- The Sudan HCT is working on a Multi-Year Humanitarian Strategy (MYHS) 2017 – 2019 to provide an overall framework for humanitarian activities for the next three years. The 2017 Sudan Humanitarian Response Plan will include the operational plans and funding requests for humanitarian activities in the first year of the MYHS, based on severity of needs identified in the 2017 HNO. Of the 4.8 million people identified as being in need of assistance; 3.6 million will be targeted by the humanitarian community. The sector (35 partners) is targeting some 300,000 people expected to be newly displaced due to conflict/disaster; 150,000 of the most vulnerable protracted IDPs; and 200,000 expected returnees.
- Whilst there have been fewer new displacements due to conflict in Darfur so far this year, the number of returnees is steadily increasing due to the improvement of the security and humanitarian situation. However, some 1.6 million IDPs remain in camps, and the most vulnerable continue to need assistance.

Response

- During the first quarter of 2017, the ES/NFI Sector responded to the ES/NFI needs of some 35,600 people in North, Central, East, West and South Darfur. The majority of the ES/NFIs were provided to the distributing partner from the NFI Common Pipeline, with some partners assisting with bilateral support from donors.
- Sector partners, with IOM support, continue to register/ verify and assess the ES/NFI needs of refugee and IDP returnees: some 2,500 families reported in Baashim and Tima villages, North Darfur; and some 7,000 households reported in Um Dukun, Central Darfur in order to provide appropriate response.

Gaps / challenges

- Timely needs assessments, delivery of assistance and monitoring of assistance to ascertain beneficiary satisfaction remain a challenge due to access constraints and other obstacles such as lack of funds. The new government directives for Humanitarian Action are expected to ease access to locations of affected populations.

Coverage against targets (HHs)

Shelter and NFI items delivered (Jan to March 2017)	
Total NFIs (blankets, sleeping mats, jerrycans)	7.120
No of beneficiaries assisted	35.600
No of plastic sheets (ES) delivered	7.666
No of HHs received ES assembly material	450
Transitional shelters	242

CLUSTER TEAM

Cluster Coordinator (UNHCR)
Nevins Saeed / saeedn@unhcr.org

Reports Officer (UNHCR)
Rami Khalid / khalidr@unhcr.org

Monitoring & Reporting Officer (UNHCR)
Ahmed Alfadl / alfadl@unhcr.org

KEY DATES

- Darfur Crises erupted: 2003
- Activation of cluster: 2009
- UNJLC established: 2004
- Beginning of influx to Sudan from South Sudan conflict: Dec 2013
- New Government Directives and Procedures for Humanitarian Action: January 2017

KEY DOCUMENTS available

- Shelter Strategy
- Darfur NFI CP Response Report (quarterly)
- ESNFI Sector Update (quarterly)
- Sudan shelter and cluster fact sheet (quarterly)

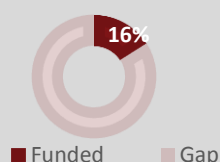
KEY LINKS

- sheltercluster.org/response/Sudan
- humanitarianresponse.info/en/operations/sudan
- reliefweb.int/country/sdn

KEY FIGURES

35 Cluster partners
1.5 M / 650K People in need / targeted

FUNDING



Total funding required:
US\$20.1M