

VENEZUELA SHELTER, ENERGY AND NFI CLUSTER



Cluster Coordinator: Adriana Durán
Assistant IM Officer: Adriana Ramírez
Shelter Assistant: Emigdio Filardi

Wednesday 23 June 2021
14:00 CEST / 8:00 Caracas

Content



Background and context overview



Cluster coordination structure and evolution



Critical shelter, energy and NFI needs



Shelter, energy and NFI cluster strategy



Shelter, energy and NFI cluster response and modalities



Gaps and challenges



Lessons learned

Background and context overview



Economic contraction



Source: "[Lo que el dinero no puede comprar: así se ve la hiperinflación de Venezuela](#)". La República. Photo: Reuters.

Background and context overview



Human mobility



Source: [“Puente Internacional Simón Bolívar registró masiva afluencia de retorno hacia Venezuela”](#). Venezolana de Televisión.

Background and context overview



Essential services deterioration



Background and context overview

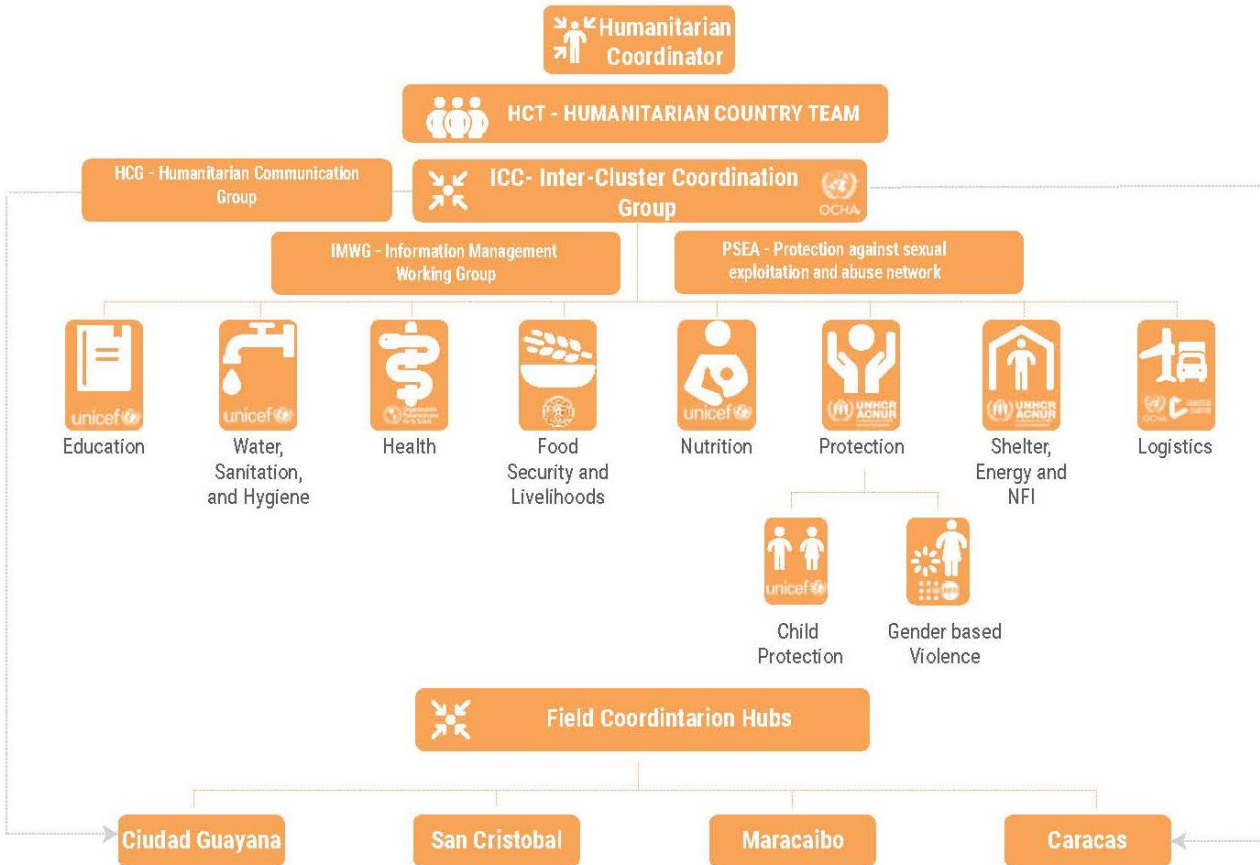


COVID-19 pandemic

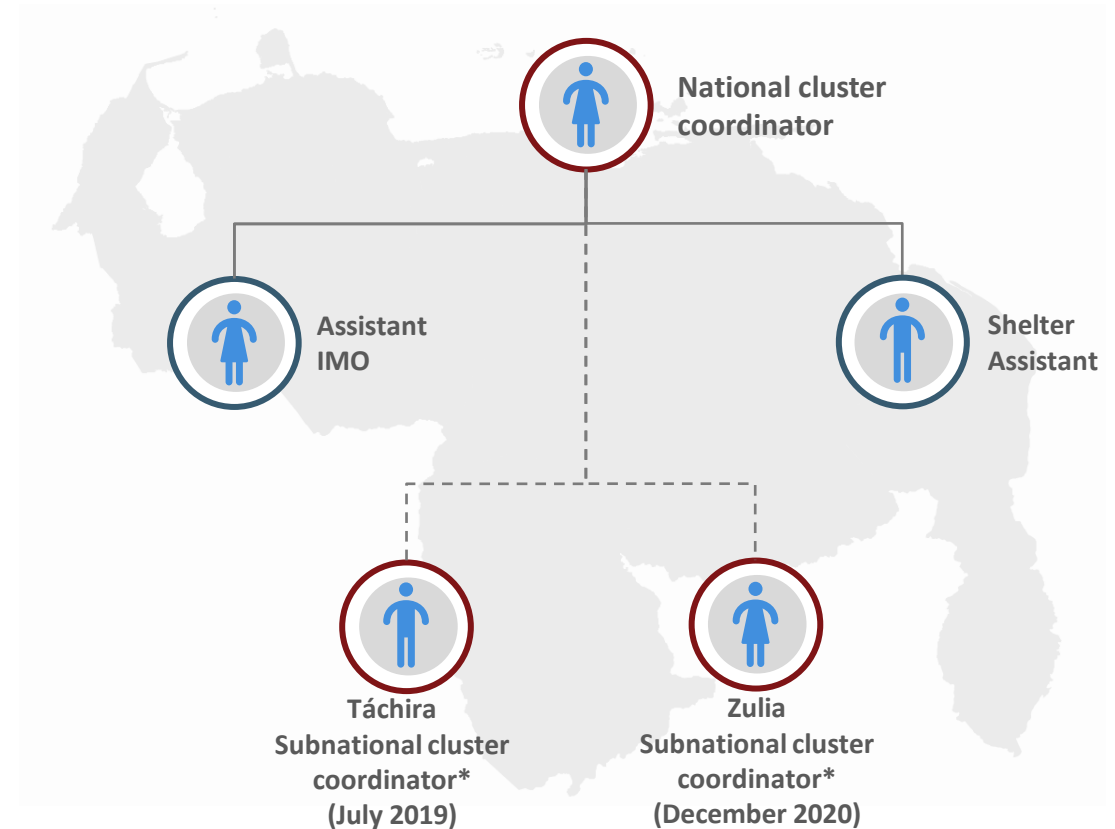


Cluster coordination structure and evolution

Humanitarian architecture and national cluster structure



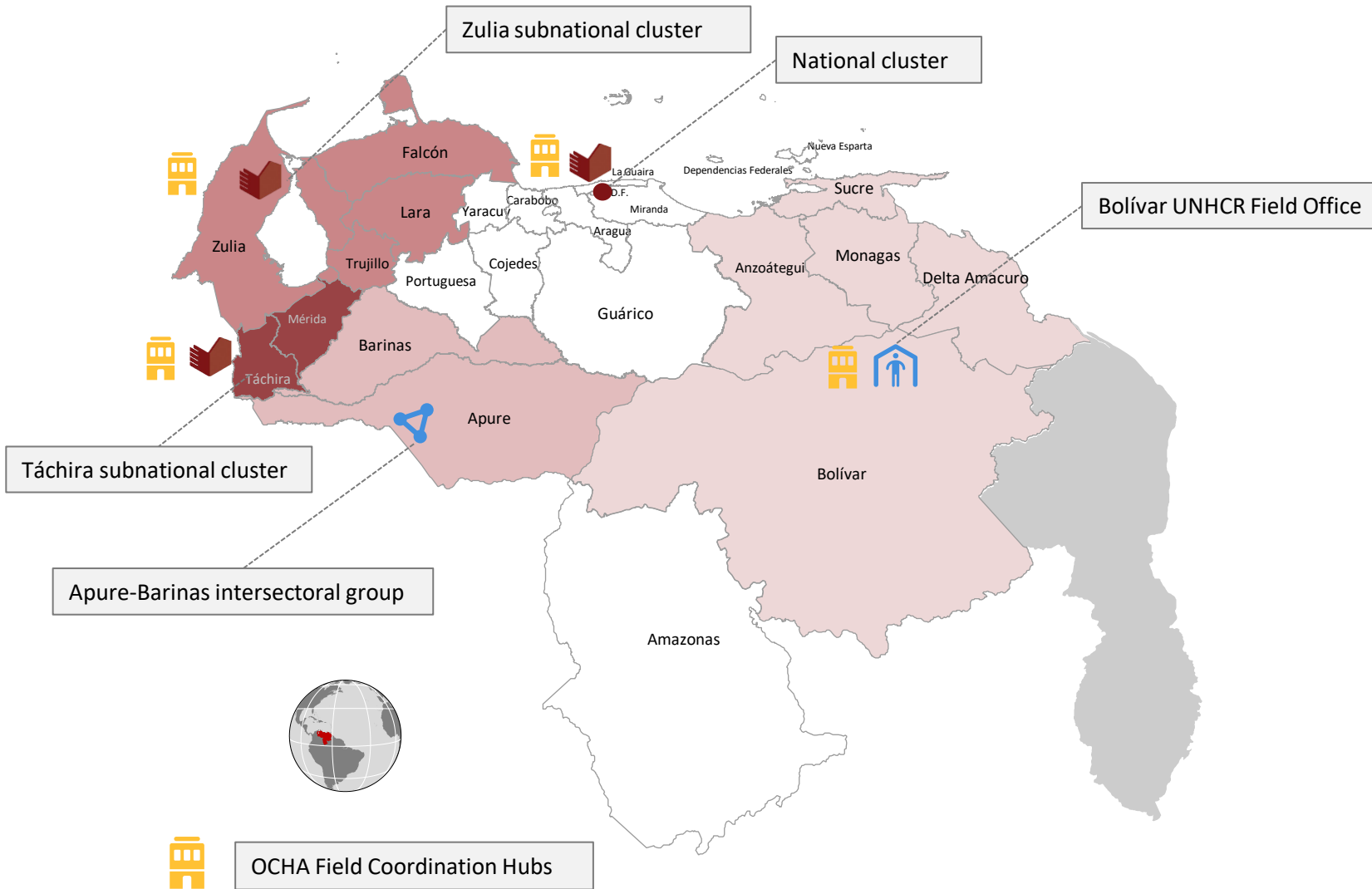
Source: Venezuelan Humanitarian Response Plan – July 2020



*Subnational cluster coordinators are the current UNHCR Head of Field Offices

Cluster coordination structure

Subnational clusters and other coordination groups

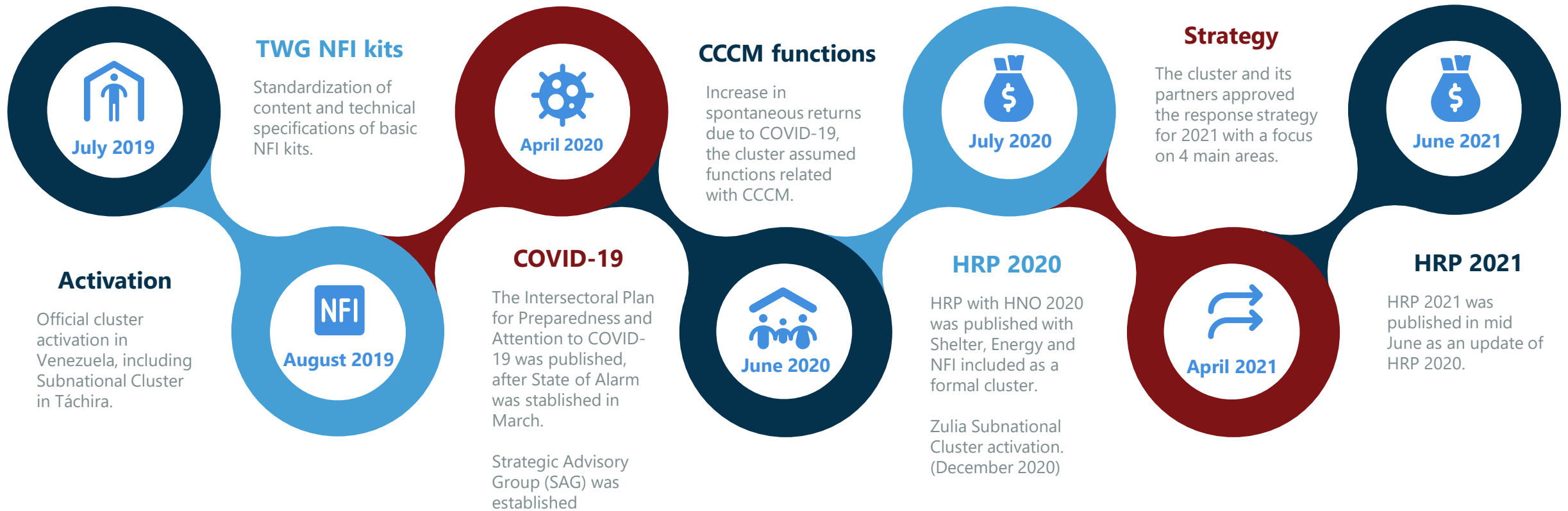


Venezuela Shelter, Energy and NFI Cluster is composed by **46 humanitarian organisations:**

	32	National NGOs
	11	International NGOs
	2	UN Agencies
	1	Observer

Cluster coordination structure and evolution

Evolution



Critical Shelter, Energy and NFI needs

People on the move in highly vulnerable conditions



Vulnerable persons in situation of mobility including **outflows and returns** through informal border crossings are exposed to **significant protection risks.**

000_1EX13M

Photo: AFP

Critical Shelter, Energy and NFI needs

Substandard Shelter Conditions



Persons affected by the crisis **move internally to large urban and border areas** where the access to basic services or/and livelihoods is not heavily affected.

Critical Shelter, Energy and NFI needs

Remote areas without access to national electricity network



Limited access to energy impacts the performance of **daily activities** (cooking, means of life, telecom, access to water systems), and also has an impact on **protection rights**, security and gender-based violence.

Critical Shelter, Energy and NFI needs

People persistently affected by floods



Flooding has been a **persistent phenomenon** for years in Venezuela, bringing additional shelter and NFIs requirements to the preexisting needs already aggravated with the ongoing crisis.

Photo: [HRP 2021](#) - UNHCR/Hugo Quintero

Critical Shelter, Energy and NFI needs

Institutions and community spaces in situation of abandonment



COVID-19 pandemic has aggravated these needs especially in **sanitary centres, protection institutions, safe spaces networks and schools.**

Source: [Hospitales venezolanos sufren por deterioro y escasez en medio de la crisis – Diario Digital Nuestro País \(elpais.cr\)](#)

Shelter, Energy and NFI strategy



Supporting the network of temporary shelter arrangements

Repairs and constructions, including improvements in **key electrical infrastructure**.

Basic **NFI and equipment** distributions.

Mapping of spaces and services (online tool)



Community-level interventions

Interventions in **community spaces and centres**.

Support to institutions that provide essential services (health centres, schools and coordination authorities)

Criteria for interventions and trainings in safe construction



Supporting sub-standard shelters in border areas

Repairs, improvements and constructions in shelters

Basic **NFI and equipment** distributions.



Supporting competent authorities when natural disasters are taking place

Establishment of **Working Groups with relevant authorities** at the national and regional level

Supporting the **development of contingency plans** including participation of partners organisation (i.e., NFI distributions, RHU)



Persons on the move



Returnees



Indigenous persons



Persons with disabilities



Elderly persons

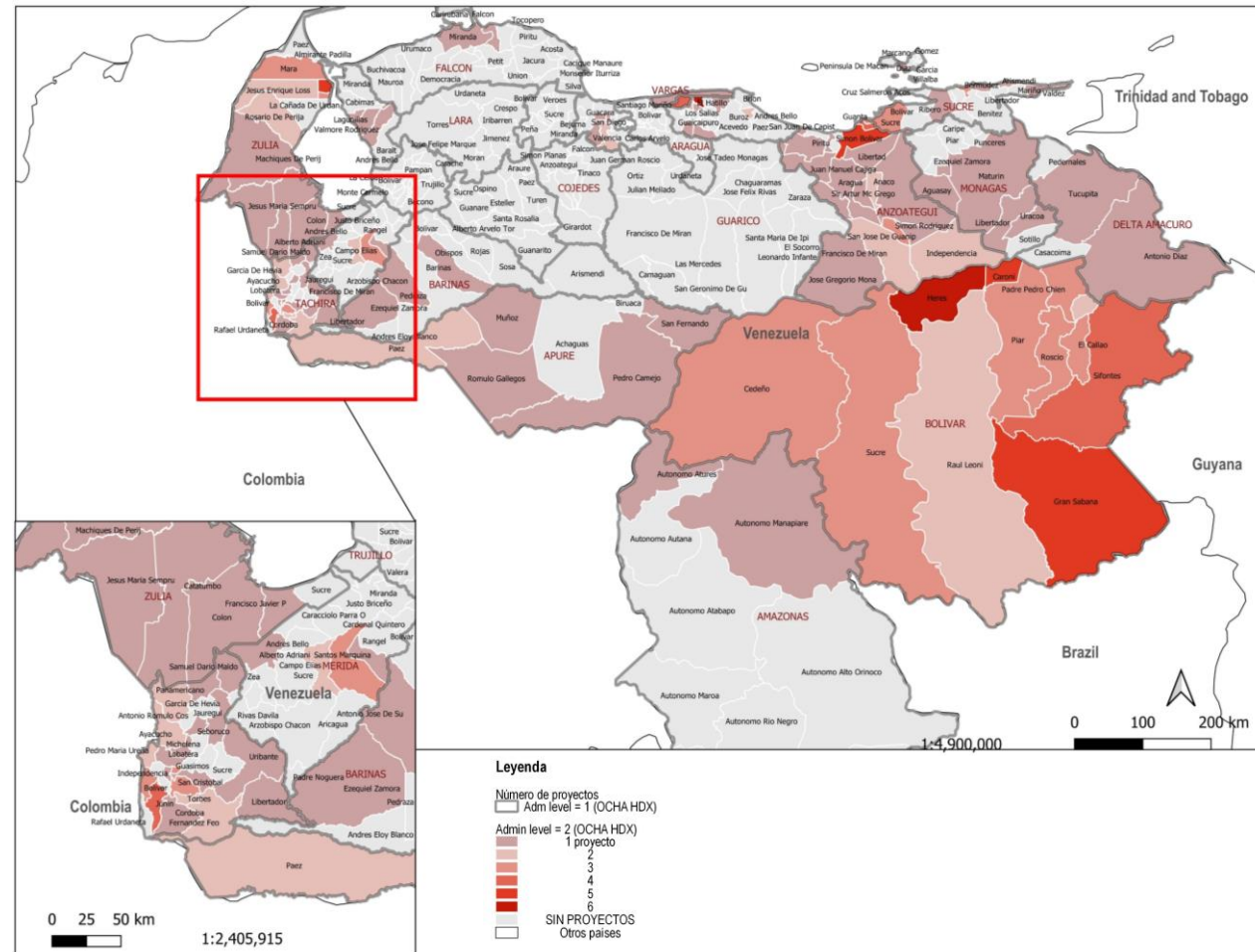


Refugees

Shelter, Energy and NFI response and modalities

Humanitarian Response Plan 2021

Geographic scope of Shelter, Energy and NFI projects (HRP 2021):



Overall Response Plan Overview:



Target (Overall HRP):
4.5 million people



Financial requirement (Overall HRP):
US\$708.1 million

Funds received through HRP 2021 (FTS source)

Shelter, Energy and NFI Cluster:



For HRP 2021:
24 partner organisations



Submitted:
25 project proposals



To assist (sectoral target):
1,4 million people

Funds received through HRP 2021 for the Shelter, Energy and NFI Cluster (FTS source)



In:
21 states

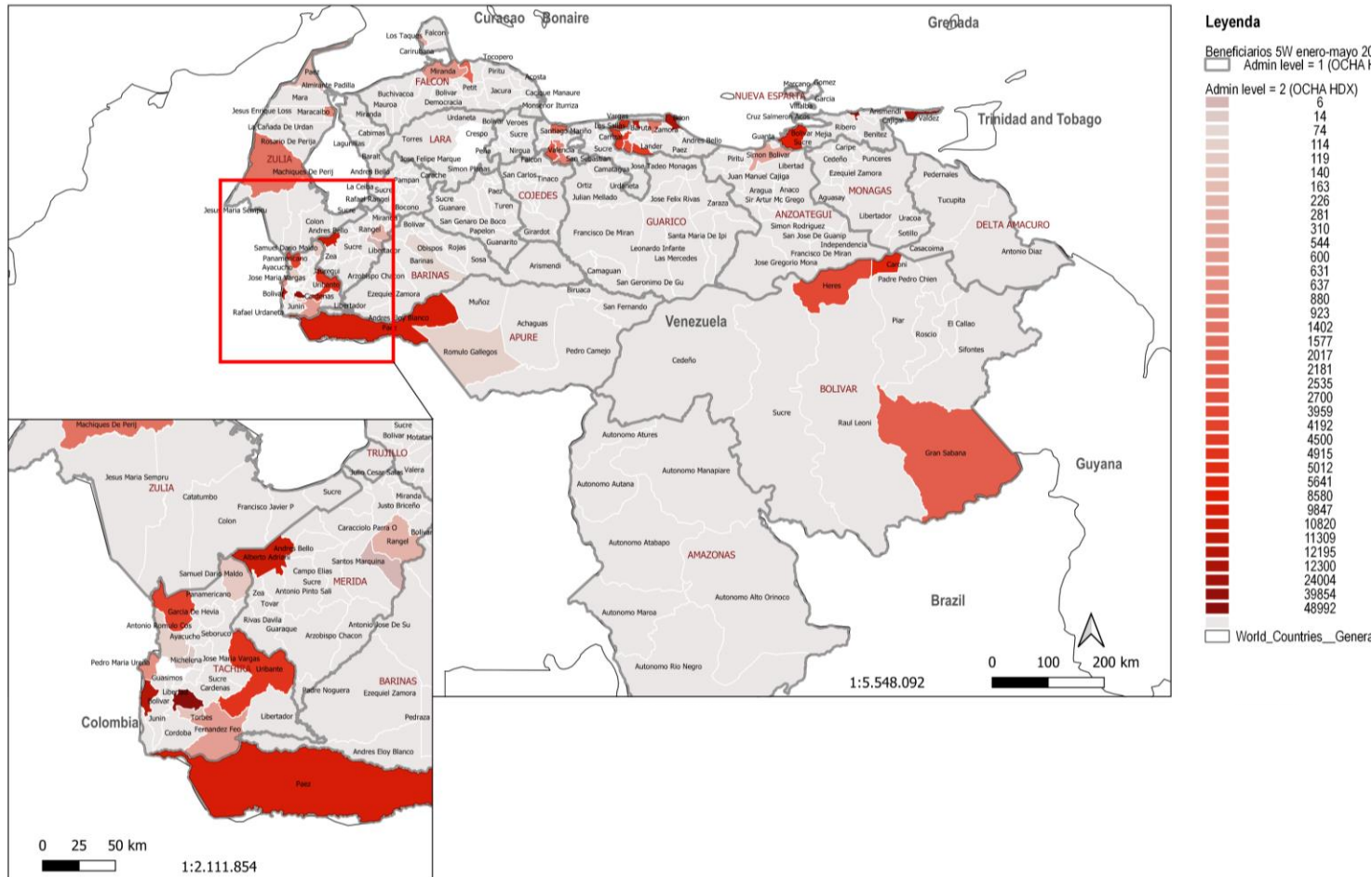


Funding required:
US\$45.0 million

Shelter, Energy and NFI response and modalities

Response Jan-May 2021 in numbers

Geographic coverage of Shelter, Energy and NFI response:



267,886 people reached



12 states and Capital District



135.644 people reached (Shelter)

86 RHUs installed



89.009 people reached (Energy)

110 street solar lamps installed



43.233 people reached (NFIs)

Shelter, Energy and NFI response and modalities

Repairs and construction of temporary shelter arrangements

Before



After



Repair of temporary Shelter arrangements for persons on the move (before and after).
Photos: IOM

Shelter, Energy and NFI response and modalities

Repairs and construction of individual shelters



Shelter, Energy and NFI response and modalities

Repairs and construction of individual shelters

Before



After



Photos: El Ingenio - Fundación Vivienda Popular

Shelter, Energy and NFI response and modalities

RHUs installation to support health facilities



Shelter, Energy and NFI response and modalities

RHUs installation as temporary shelter



Shelter, Energy and NFI response and modalities

Photovoltaic system installations



Photo: Photovoltaic installation at bus station, San Antonio, Táchira - UNHCR

Shelter, Energy and NFI response and modalities

Solar street lamp installations



Photos:

- Jose Ignacio del Pumar, geriatric center
UNHCR/ Yoshley Rodriguez
- San Antonio, Táchira - public space, soccer field
UNHCR

Shelter, Energy and NFI response and modalities

Repairs and construction of community spaces

Before

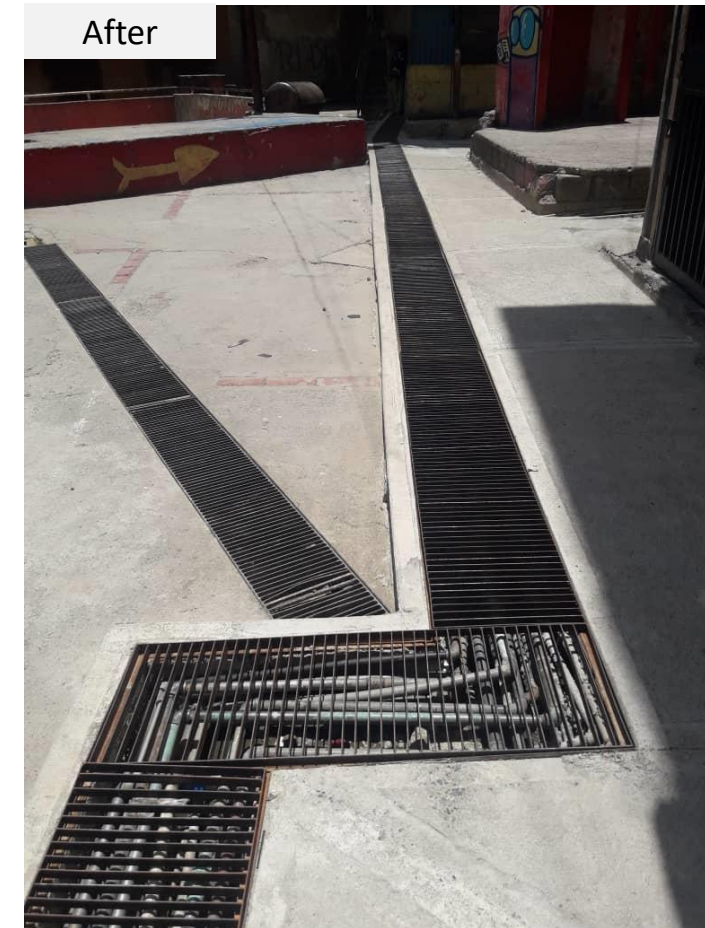


After



Shelter, Energy and NFI response and modalities

Repairs and construction of community centres



Shelter, Energy and NFI response and modalities

Basic NFIs for people on the move



Shelter, Energy and NFI response and modalities

Basic NFIs for vulnerable population



Photos: NFI distribution - UNHCR

Shelter, Energy and NFI response and modalities

Basic NFIs: people affected by natural disasters



Machiques flooding response. Zulia.
Photo: UNHCR 2021

Gaps and Challenges



Security conditions



Alternative energy sources



Operational level



Presence and capacity of organisations



Limited funding



Politicization of humanitarian assistance



Limited access to countrywide data

Lessons learned



COVID-19 emergency flagged the need to advocate for a prompt and **joint response with the relevant authorities**



The need for **an early response to recurrent natural disasters** such as floods needs further coordination and preparedness.

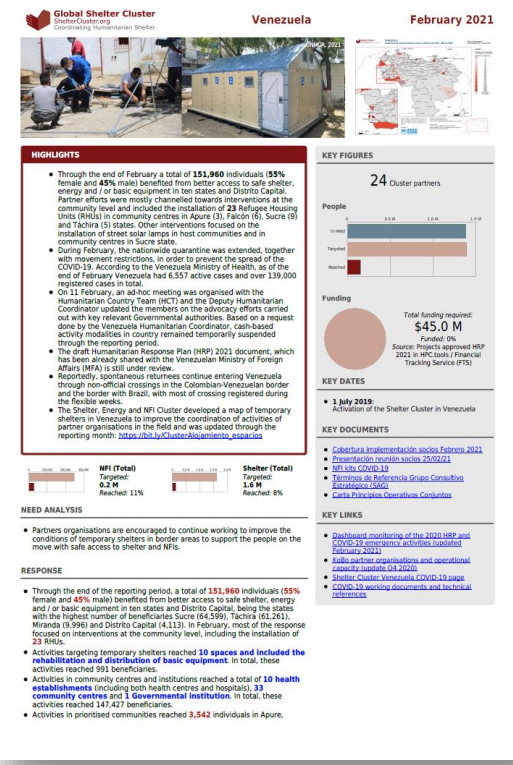
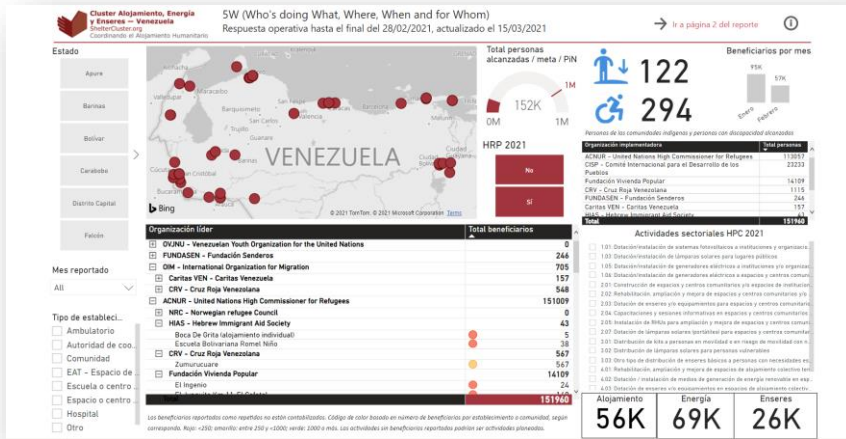


Subnational coordination is critical to have an effective and timely response to humanitarian needs.



Further **active collaboration of Strategic Advisory Group** is required in decision making and advocacy strategies

Information Management Products



Response Monitoring Dashboard (5W)

Online Map: Temporary Shelters

Monthly Factsheet

Looking forward

You can contribute!

Make use of **global capacities** to build on local partners expertise



Help make **response inside Venezuela** visible for donors



Help **advocate for Shelter** within intercluster response



Questions and answers

Any questions?



Thank you

Cluster Coordinator: Adriana Durán
coord.venezuela@sheltercluster.org

Assistant IMO: Adriana Ramírez
im.venezuela@sheltercluster.org

Shelter Assistant: Emigdio Filardi
filardig@unhcr.org



www.sheltercluster.org/venezuela

