

Global Shelter Cluster Retreat

Information Management & Assessment Best Practices

October 2016 - Geneva



Summary

- **Baseline Assessments**
- **Outcome monitoring and evaluation assessments**
- **Preparedness and Contingency Plan assessments**

Multi-sector vs Sector specific assessment?

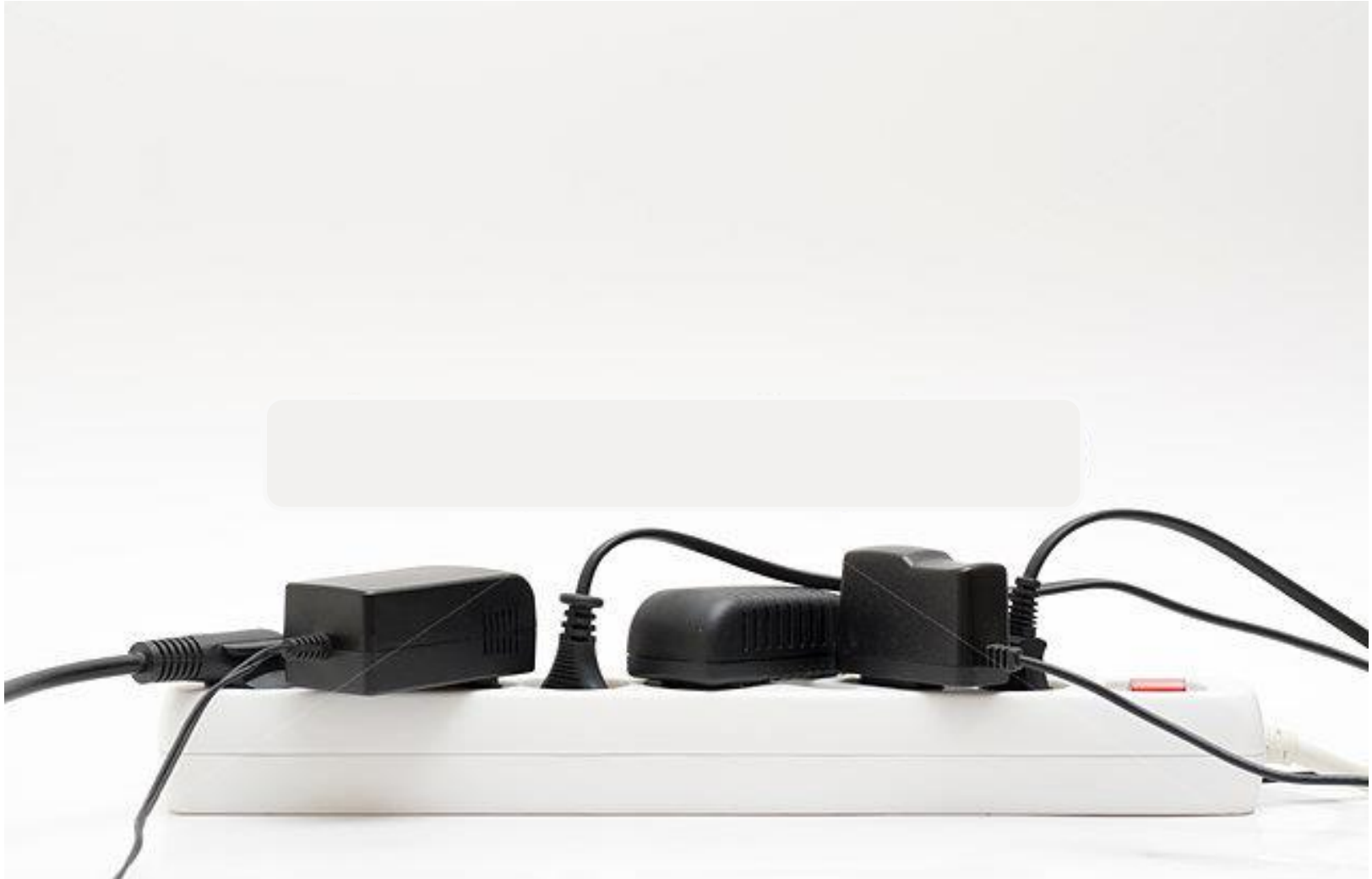
BASELINE ASSESSMENT

Multi-Cluster vs Sector

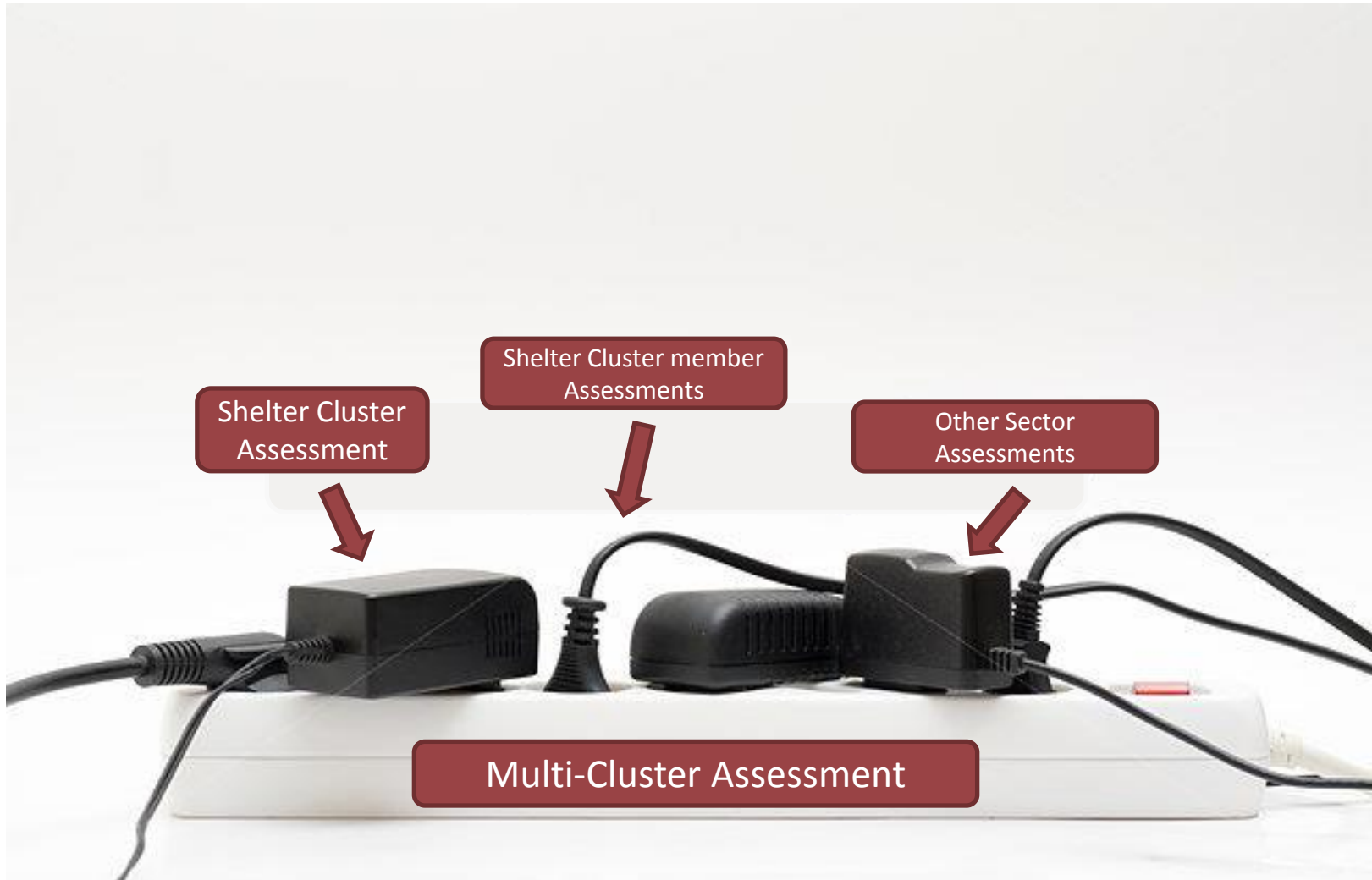
- **Multi-Cluster assessment and Sector assessment should be complementary**
- **Get involved in multi-cluster assessments**
 - Identify your core needs and make sure you have the right indicators in it
 - Opportunity for area-based analysis/approach
 - Use proxies from other sectors
- **But do not give up or pause your sector specific assessment**
 - You will need it for your SRP
 - You will need it for advocacy & sector fundraising
 - You will need it as baseline for your monitoring & evaluation cycle



Multi-Cluster vs Sector



Multi-Cluster vs Sector



Philippines Haiyan evaluation assessments

OUTCOME MONITORING ASSESSMENTS



From outputs to outcome monitoring

- Appraising cluster response plan as well as objectives:
 - have we done what we planned for?
 - Did our response strategy paid off?
 - What's left to be done?
- Opportunity to build on cluster members M&E capacity as well as response data
- Opportunity to feed in to local and global response practices



Yolanda Evaluation Objectives

General Objective

“To evaluate the quality of shelter delivery and response by Shelter Cluster agencies to assist self-recovery amongst affected households and communities, following Typhoon Yolanda.”

Specific Objectives

1. Were shelters rebuilt **Safe, Adequate and Appropriate**?
2. Were settlements rebuilt with **Access** to essential services and needs?

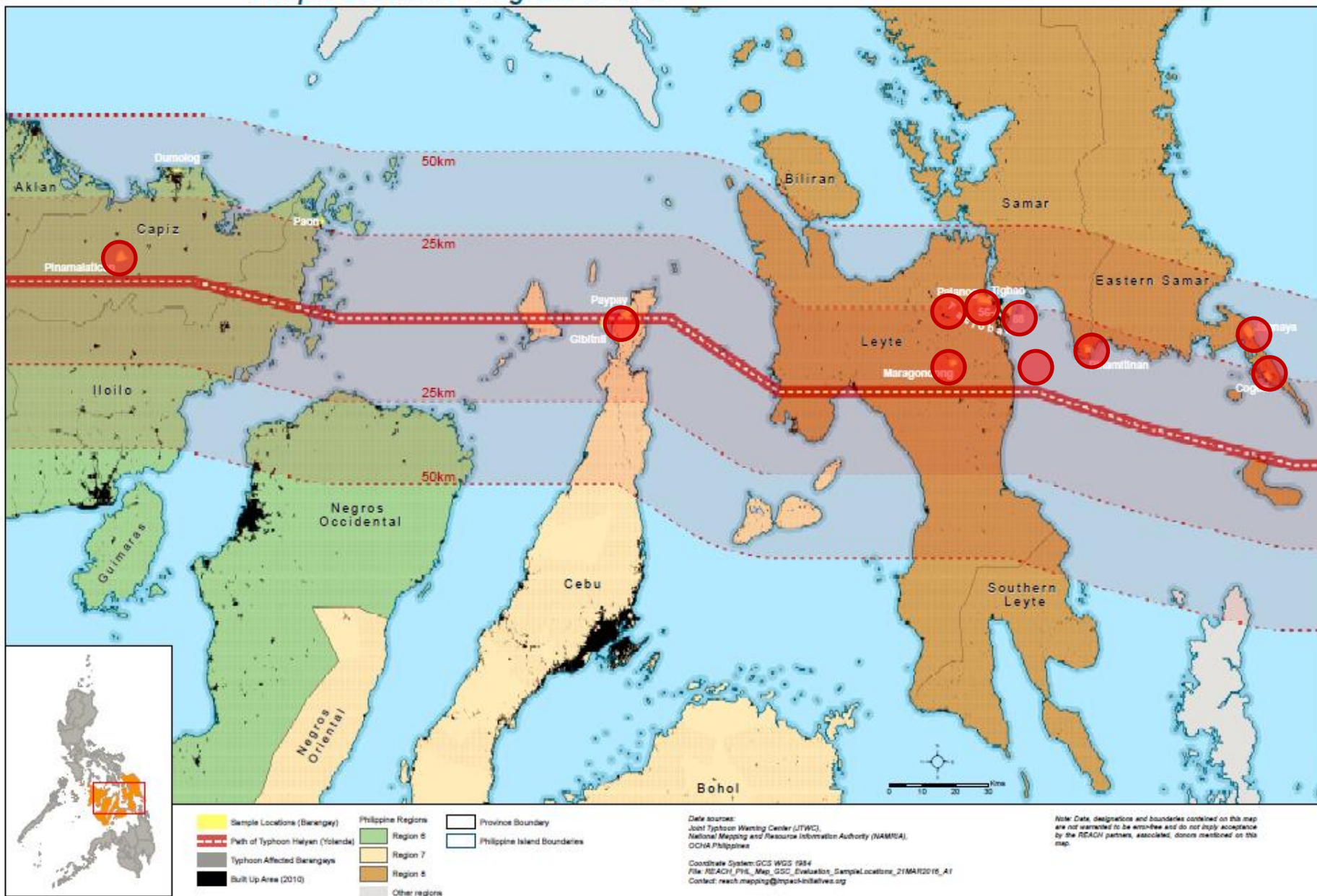
Data collection topics

- Data collection and analysis tools were designed to measure 4 data collection topics and their related indicators, as defined in the 'Recovery Shelter Guidelines' developed by the Shelter Cluster
 1. Safe Housing
 2. Adequate Housing
 3. Appropriate Housing
 4. Access

Philippines - Shelter Response Outcome Assessment

Sample Locations - Regions 6 / 7 / 8

For Humanitarian Purposes Only
Production date : 23 March 2016



Additional Findings

- Targeting
 - HLP
 - Perception and communication to affected communities
 - Presence of aid actors matters
- Use of assistance
 - Cash for repairs vs cash for rent
 - Use of assistance surplus
- Self-recovery
 - Barrier to self-recovery
 - Alternative credit systems

NEPAL Monsoon preparedness assessment

PREPAREDNESS AND CONTINGENCY ASSESSMENTS



Preparedness vs Contingency

- Preparedness and Contingency are not synonyms
- Future problems → certain needs → preparedness
- Potential problems → eventual needs → scenarios & contingency

Challenges & Opportunities

■ Challenges

- Usually less resources are available
- Supply/capacity driven vs Vulnerability driven planning

■ Opportunities

- Aid community can plan ahead for such exercises
- Better and in depth use of Secondary data
- Primary data collection to fill specific information gaps





Flood risk in VDCs within Terai region

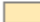


Shelter Cluster Nepal
ShelterCluster.org
Coordinating Humanitarian Shelter

REACH

An initiative of
IMPACT Foundation
ACTED and UNHCR

Terai Flood Risk

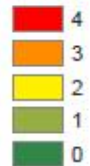
-  High
-  Medium
-  Low
-  No Risk
-  Reserve and Park
-  District boundary

0 15 30 60 KM



Terai region: Flood risk and food insecurity


Vulnerability Score



 Reserve and Park

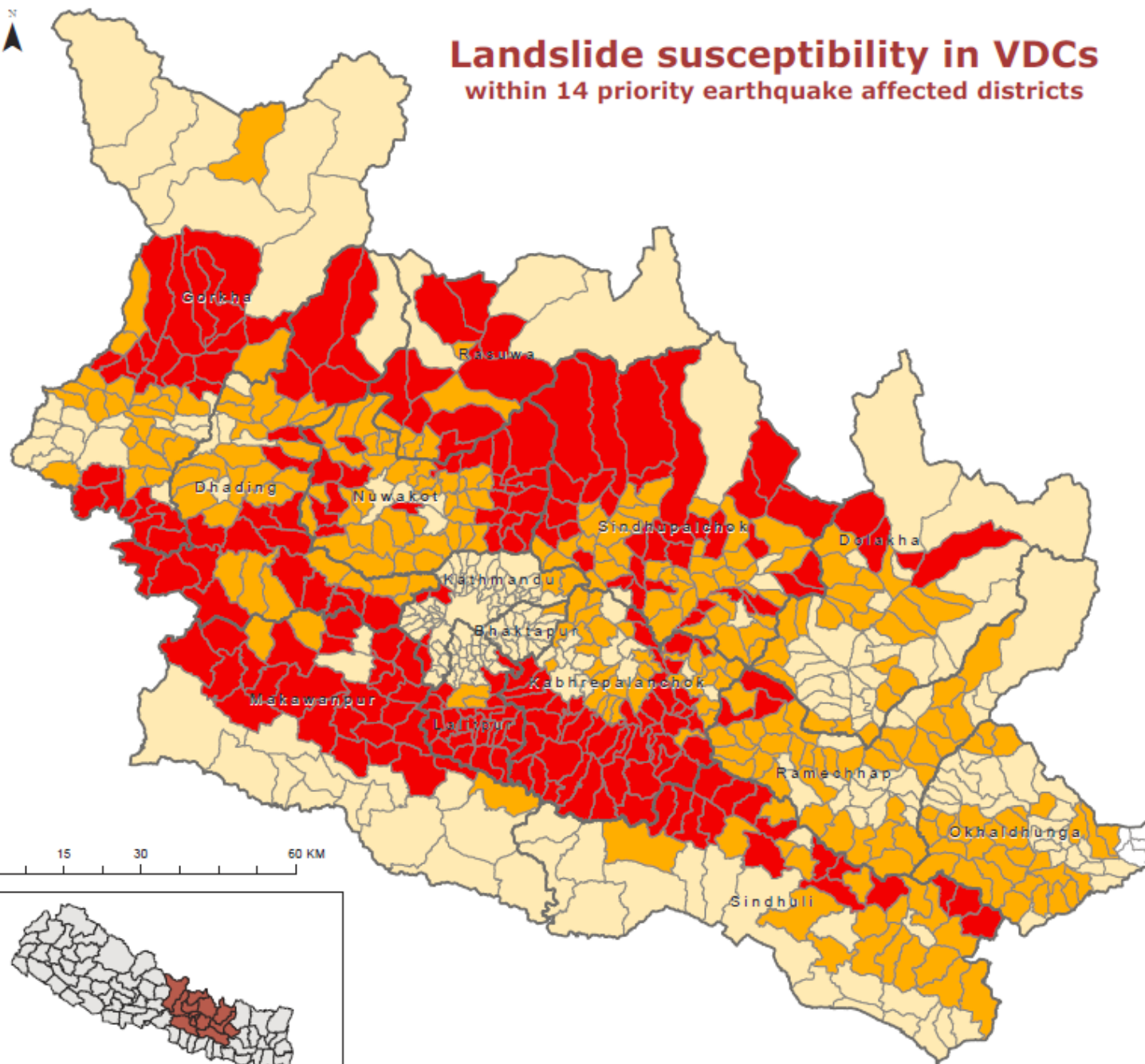
 District boundary

0 15 30 60 KM

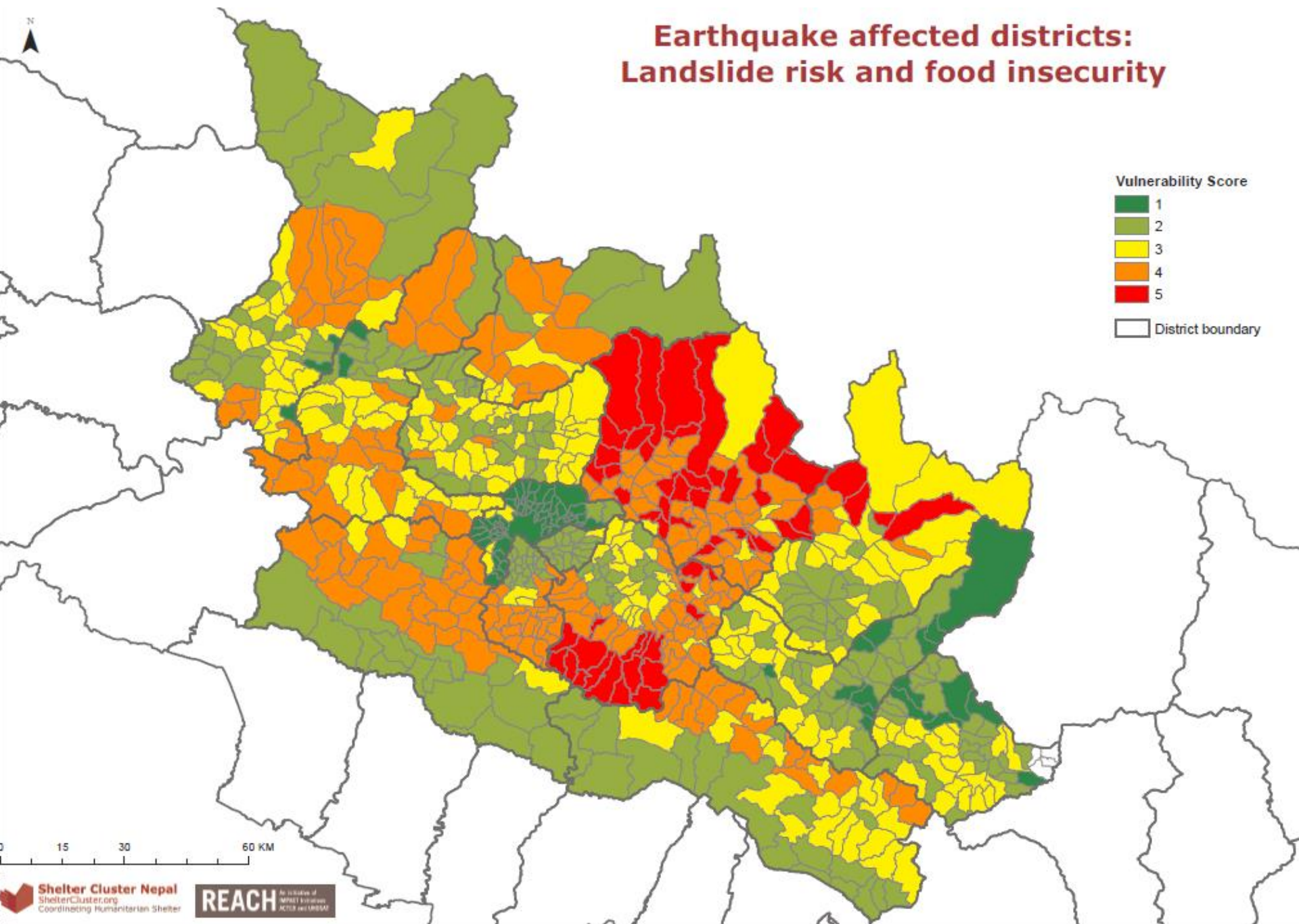




Landslide susceptibility in VDCs within 14 priority earthquake affected districts



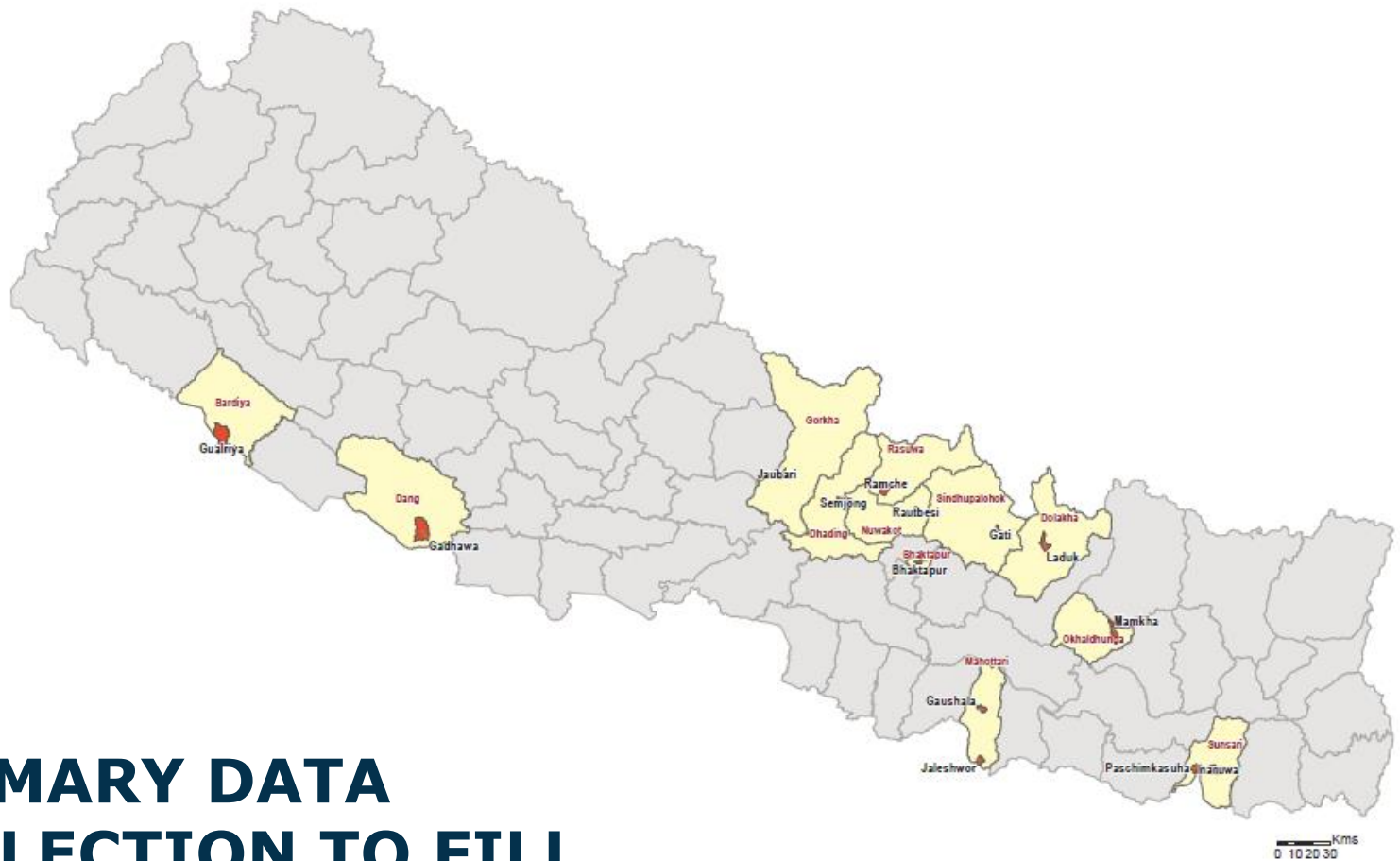
Earthquake affected districts: Landslide risk and food insecurity



Estimated caseload: **top down** approach – 14 EQ Districts

The most vulnerable population (according to social protection) living in temporary shelters and collective centers in areas with High/Medium/Low hazard of landslides

District	High risk	Moderate risk	Low risk
Bhaktapur	0	92	5963
Dhading	10236	11770	1784
Dolakha	732	6009	8677
Gorkha	9036	9298	11073
Kathmandu	72	22	3567
Kavrepalanchok	6960	4788	6579
Lalitpur	276	60	2259
Makawanpur	829	111	1943
Nuwakot	6392	14604	4162
Okhaldhunga	0	2199	1703
Ramechhap	1119	11316	6872
Rasuwa	1445	1592	199
Sindhuli	904	1463	2667
Sindhupalchok	10677	15334	2046
TOTAL	48679	78659	59494



PRIMARY DATA COLLECTION TO FILL INFORMATION GAPS



Thank you

